

<b>Document Title</b>	Specification of Network Management for SAE J1939
<b>Document Owner</b>	AUTOSAR
<b>Document Responsibility</b>	AUTOSAR
<b>Document Identification No</b>	612

<b>Document Status</b>	Final
<b>Part of AUTOSAR Standard</b>	Classic Platform
<b>Part of Standard Release</b>	4.3.1

<b>Document Change History</b>			
<b>Date</b>	<b>Release</b>	<b>Changed by</b>	<b>Change Description</b>
2017-12-08	4.3.1	AUTOSAR Release Management	<ul style="list-style-type: none"> <li>Fixed include hierarchy</li> <li>Removed multiple configuration container</li> </ul>
2016-11-30	4.3.0	AUTOSAR Release Management	<ul style="list-style-type: none"> <li>Address coordination for gateways</li> <li>Improved handling of meta data</li> <li>Reliable TxConfirmation replaces timeout</li> <li>SetEventStatus replaces ReportErrorStatus</li> </ul>
2015-07-31	4.2.2	AUTOSAR Release Management	<ul style="list-style-type: none"> <li>Support for networks without address claiming</li> <li>Fixed state notifications to BswM</li> <li>Introduction of further error classes</li> </ul>
2014-10-31	4.2.1	AUTOSAR Release Management	<ul style="list-style-type: none"> <li>Enhanced description of extended production error J1939NM_E_ADDRESS_LOST</li> <li>Fixed usage of 'const' in NM APIs</li> <li>Harmonized with SWS BSW General</li> </ul>
2014-03-31	4.1.3	AUTOSAR Release Management	<ul style="list-style-type: none"> <li>Introduction of random delays</li> <li>Fixed state diagram</li> <li>Removed configurable dummy APIs</li> </ul>
2013-10-31	4.1.2	AUTOSAR Release Management	<ul style="list-style-type: none"> <li>Additional development errors for function parameter checks</li> <li>Removed change documentation</li> </ul>
2013-03-15	4.1.1	AUTOSAR Administration	<ul style="list-style-type: none"> <li>Initial Release</li> </ul>

## **Disclaimer**

This work (specification and/or software implementation) and the material contained in it, as released by AUTOSAR, is for the purpose of information only. AUTOSAR and the companies that have contributed to it shall not be liable for any use of the work.

The material contained in this work is protected by copyright and other types of intellectual property rights. The commercial exploitation of the material contained in this work requires a license to such intellectual property rights.

This work may be utilized or reproduced without any modification, in any form or by any means, for informational purposes only. For any other purpose, no part of the work may be utilized or reproduced, in any form or by any means, without permission in writing from the publisher.

The work has been developed for automotive applications only. It has neither been developed, nor tested for non-automotive applications.

The word AUTOSAR and the AUTOSAR logo are registered trademarks.

## Table of Contents

1	Introduction and functional overview .....	5
1.1	Network Management according to SAE J1939 .....	5
1.2	J1939 Network Management BSW Module .....	5
2	Acronyms and abbreviations .....	6
3	Related documentation.....	7
3.1	Input documents.....	7
3.2	Related standards and norms .....	8
3.3	Related specification .....	8
4	Constraints and assumptions .....	9
4.1	Limitations .....	9
4.2	Applicability to car domains .....	9
5	Dependencies to other modules.....	10
5.1	File structure.....	10
5.1.1	Code file structure.....	10
5.1.2	Header file structure.....	10
6	Requirements traceability .....	12
7	Functional specification .....	13
7.1	Overview .....	13
7.2	Module Handling .....	13
7.2.1	Initialization .....	13
7.2.2	Timing Related Functionality.....	13
7.3	Network Management States of the J1939Nm .....	14
7.3.1	ECU Startup.....	15
7.3.2	Address Loss .....	17
7.3.3	ECU Shutdown .....	17
7.4	Transmission of AddressClaimed.....	17
7.5	Reception of AddressClaimed .....	18
7.6	Request for AddressClaimed.....	19
7.7	Address Coordination .....	20
7.8	Error Classification .....	21
7.8.1	Development Errors .....	21
7.8.2	Runtime Errors.....	21
7.8.3	Transient Faults .....	21
7.8.4	Production Errors .....	22
7.8.5	Extended Production Errors.....	22
7.9	API Parameter Checking .....	22
8	API specification.....	24
8.1	Imported types.....	24
8.2	Type definitions .....	24
8.2.1	J1939Nm_ConfigType .....	24
8.3	Function definitions.....	24
8.3.1	J1939Nm_Init.....	24
8.3.2	J1939Nm_DeInit .....	25

8.3.3	J1939Nm_GetVersionInfo.....	25
8.3.4	J1939Nm_NetworkRequest .....	26
8.3.5	J1939Nm_NetworkRelease .....	26
8.3.6	J1939Nm_GetState .....	27
8.3.7	J1939Nm_GetBusOffDelay.....	27
8.3.8	J1939Nm_PassiveStartUp .....	28
8.4	Call-back notifications.....	28
8.4.1	J1939Nm_RxIndication.....	28
8.4.2	J1939Nm_TxConfirmation .....	29
8.4.3	J1939Nm_RequestIndication.....	29
8.5	Scheduled functions .....	30
8.5.1	J1939Nm_MainFunction .....	30
8.6	Expected Interfaces.....	31
8.6.1	Mandatory Interfaces .....	31
8.6.2	Optional Interfaces.....	31
8.6.3	Configurable interfaces .....	31
9	Sequence diagrams .....	33
9.1	Transmission of AddressClaimed.....	33
9.2	Reception of AddressClaimed .....	33
9.3	Request for AddressClaimed.....	34
10	Configuration specification.....	35
10.1	Containers and configuration parameters .....	35
10.1.1	J1939Nm .....	39
10.1.2	J1939NmGeneral .....	40
10.1.3	J1939NmConfigSet.....	42
10.1.4	J1939NmSharedAddressSpace .....	43
10.1.5	J1939NmChannel.....	43
10.1.6	J1939NmTxPdu.....	45
10.1.7	J1939NmRxPdu .....	45
10.1.8	J1939NmNodeSpecificDemEventParameterRefs .....	46
10.1.9	J1939NmNode.....	47
10.1.10	J1939NmExternalNode.....	51
10.2	Configuration of NM Interface .....	54
10.3	Published Information.....	55

## 1 Introduction and functional overview

This specification specifies the functionality, API and the configuration of the AUTOSAR Basic Software module J1939 Network Management.

### 1.1 Network Management according to SAE J1939

In contrast to other AUTOSAR network management approaches, the task of J1939 network management is not to handle sleep and wake-up of ECUs, but to assign a unique address to each ECU.

This is achieved by sending the AddressClaimed (AC, 0x0EE00) parameter group (PG) at start-up, which announces the desired address. If another ECU claims the same address, and has higher priority, the ECU has to go silent after sending the CannotClaimAddress parameter group (AC with null address 0xFE as source address). The AddressClaimed PG must also be sent upon request.

### 1.2 J1939 Network Management BSW Module

The J1939 Network Management module (J1939Nm) handles received and transmitted AddressClaimed (AC) PGs. It supports transmission of AC on start-up, after a contending AC received from another node, and on request (triggered by the J1939 Request Manager).

Besides this, the J1939 Network Management module also ensures that the ECU does not send any messages during startup or after address loss.

## 2 Acronyms and abbreviations

<b>Abbreviation / Acronym:</b>	<b>Description:</b>
AC	J1939 AddressClaimed PG (PGN = 0x0EE00)
BSW	Basic Software (module)
DET	Default Error Tracer, supports development and runtime error reporting
Node	J1939 node – can be attached to more than one channel
NodeChannel	The connection of a node to one channel
PG	Parameter Group
PGN	Parameter Group Number
RQST	J1939 Request PG (PGN = 0x0EA00)

## 3 Related documentation

### 3.1 Input documents

- [1] List of Basic Software Modules  
AUTOSAR\_TR\_BSWModuleList.pdf
  
- [2] Layered Software Architecture  
AUTOSAR\_EXP\_LayeredSoftwareArchitecture.pdf
  
- [3] General Requirements on Basic Software Modules  
AUTOSAR\_SRS\_BSWGeneral.pdf
  
- [4] General Specification of Basic Software Modules  
AUTOSAR\_SWS\_BSWGeneral.pdf
  
- [5] Requirements on BSW Modules for SAE J1939  
AUTOSAR\_SRS\_J1939.pdf
  
- [6] Requirements on Network Management  
AUTOSAR\_SRS\_J1939.pdf
  
- [7] Specification of Communication Stack Types  
AUTOSAR\_SWS\_CommunicationStackTypes.pdf
  
- [8] System Template  
AUTOSAR\_TPS\_SystemTemplate.pdf
  
- [9] Specification of CAN Interface  
AUTOSAR\_SWS\_CANInterface.pdf
  
- [10] Specification of Network Management Interface  
AUTOSAR\_SWS\_NetworkManagementInterface.pdf
  
- [11] Specification of Basic Software Mode Manager  
AUTOSAR\_SWS\_BSWModeManager.pdf
  
- [12] Specification of a Request Manager for SAE J1939  
AUTOSAR\_SWS\_SAEJ1939RequestManager.pdf
  
- [13] Specification of Default Error Tracer  
AUTOSAR\_SWS\_DefaultErrorTracer.pdf
  
- [14] Specification of Diagnostic Event Manager  
AUTOSAR\_SWS\_DiagnosticEventManager.pdf
  
- [15] Specification of BSW Scheduler  
AUTOSAR\_SWS\_BWScheduler.pdf

[16] Specification of ECU Configuration  
AUTOSAR\_TPS\_ECUConfiguration.pdf

[17] Specification of Memory Mapping  
AUTOSAR\_SWS\_MemoryMapping.pdf

### **3.2 Related standards and norms**

[18] J1939-81 JUN2011, Network Management

### **3.3 Related specification**

AUTOSAR provides a General Specification on Basic Software modules [4] (SWS BSW General), which is also valid for the SAE J1939 Network Management module.

Thus, the specification SWS BSW General shall be considered as additional and required specification for SAE J1939 Transport Layer.



## **4 Constraints and assumptions**

### **4.1 Limitations**

The J1939 Network Management module does not support changing of the address, neither after a CommandedAddress PG, nor after address loss. It also does not support for Name Management.

### **4.2 Applicability to car domains**

J1939 is developed by the SAE as a standard for heavy-duty on-highway, farming, and construction vehicles. It is not applicable to passenger cars or light trucks.

## 5 Dependencies to other modules

The J1939 Network Management module (J1939Nm) has interfaces towards the CAN Interface (CanIf), the J1939 Request Manager (J1939Rm), the Network Management Interface (Nm), the Diagnostic Event Manager (DEM), and the Default Error Tracer (DET).

The J1939 Network Management module includes header files of the CAN Interface, the Network Management Interface, the J1939 Request Manager, the Diagnostic Event Manager, and the Default Error Tracer.

### 5.1 File structure

#### 5.1.1 Code file structure

For details, refer to the section 5.1.6 "Code file structure" of the SWS BSW General [4].

#### 5.1.2 Header file structure

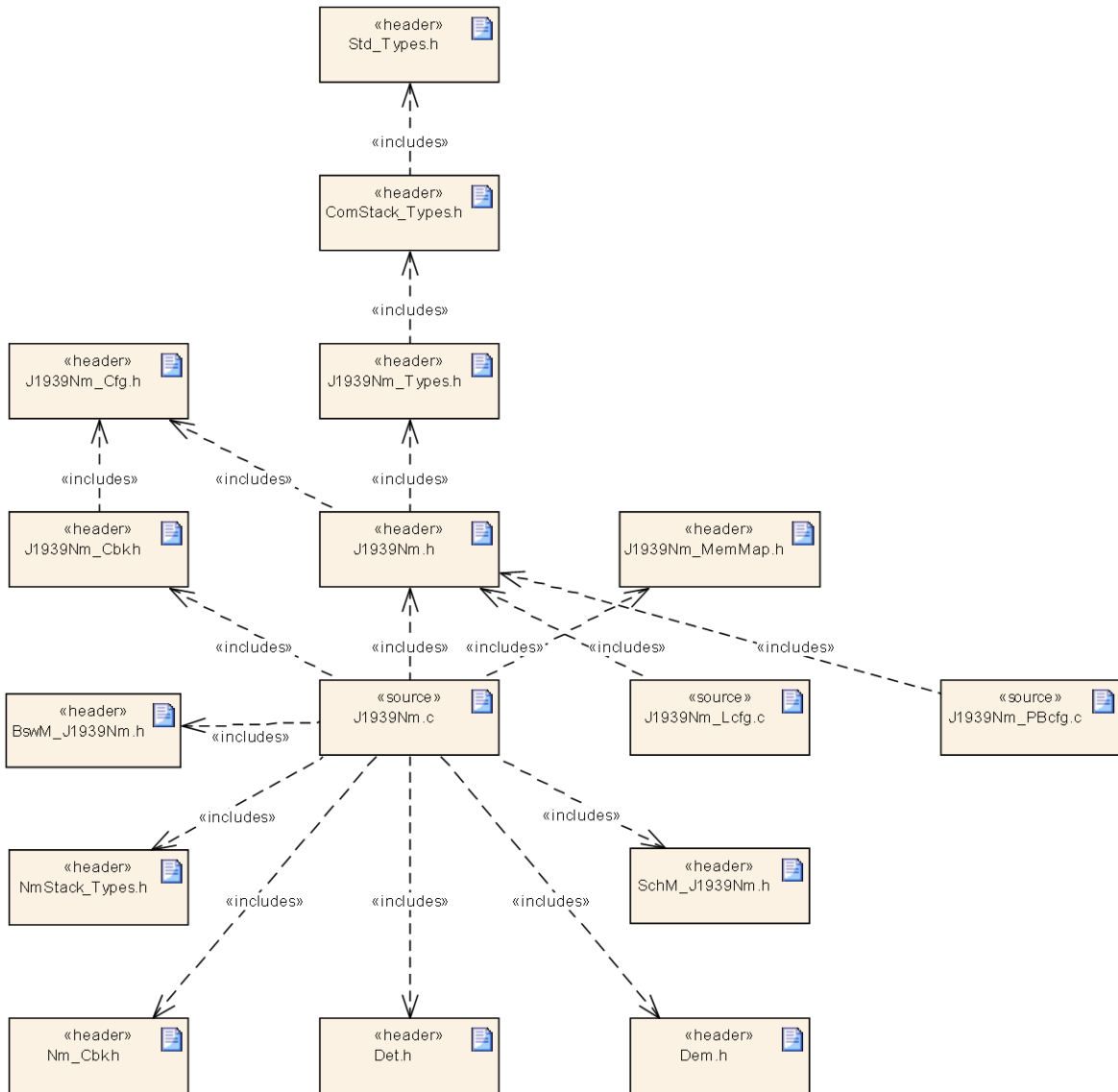
Besides the files defined in section 5.1.7 "Header file structure" of the SWS BSW General [4], the J1939 Network Management module needs to include the files defined below.

[SWS\_J1939Nm\_00001] [The implementation and callback header files (J1939Nm.h and J1939Nm\_Cbk.h) shall include the file J1939Nm\_Types.h.] (SRS\_BSW\_00415)

[SWS\_J1939Nm\_00008] [The header file J1939Nm\_Types.h shall include the file ComStack\_Types.h.] (SRS\_BSW\_00415)

[SWS\_J1939Nm\_00075] [The implementation (J1939Nm.c) shall include the file BswM\_J1939Nm.h.] (SRS\_BSW\_00415)

The following picture shows the include hierarchy of the J1939 Network Management module.



**Figure 1: Include hierarchy of J1939Nm**

## 6 Requirements traceability

Requirement	Description	Satisfied by
SRS_BSW_00407	Each BSW module shall provide a function to read out the version information of a dedicated module implementation	SWS_J1939Nm_00033
SRS_BSW_00415	Interfaces which are provided exclusively for one module shall be separated into a dedicated header file	SWS_J1939Nm_00001, SWS_J1939Nm_00008, SWS_J1939Nm_00075
SRS_J1939_00030	The J1939 Network Management module shall provide an interface for module initialization	SWS_J1939Nm_00002, SWS_J1939Nm_00007, SWS_J1939Nm_00031
SRS_J1939_00031	The J1939 Network Management module shall provide an interface for module shutdown	SWS_J1939Nm_00003, SWS_J1939Nm_00032
SRS_J1939_00032	The J1939 Network Management module shall report a failed address claim to the Diagnostic Event Manager	SWS_J1939Nm_00012
SRS_J1939_00033	The J1939 Network Management module shall perform an initial address claim at startup	SWS_J1939Nm_00009, SWS_J1939Nm_00016, SWS_J1939Nm_00017, SWS_J1939Nm_00019, SWS_J1939Nm_00062
SRS_J1939_00034	The J1939 Network Management module shall react correctly to contending address claims	SWS_J1939Nm_00014, SWS_J1939Nm_00016, SWS_J1939Nm_00017, SWS_J1939Nm_00018, SWS_J1939Nm_00019, SWS_J1939Nm_00020, SWS_J1939Nm_00021, SWS_J1939Nm_00062
SRS_J1939_00035	The J1939 Network Management module shall react to requests for the AddressClaimed PG	SWS_J1939Nm_00016, SWS_J1939Nm_00017, SWS_J1939Nm_00018, SWS_J1939Nm_00019, SWS_J1939Nm_00022, SWS_J1939Nm_00023, SWS_J1939Nm_00043, SWS_J1939Nm_00062
SRS_J1939_00036	The J1939 Network Management module shall only allow communication after a successful address claim	SWS_J1939Nm_00010, SWS_J1939Nm_00011, SWS_J1939Nm_00015, SWS_J1939Nm_00021, SWS_J1939Nm_00044, SWS_J1939Nm_00045, SWS_J1939Nm_00063, SWS_J1939Nm_00064, SWS_J1939Nm_00065, SWS_J1939Nm_00066
SRS_J1939_00037	The J1939 Network Management module shall delay communication after initial address claim	SWS_J1939Nm_00010, SWS_J1939Nm_00013, SWS_J1939Nm_00061, SWS_J1939Nm_00063

## 7 Functional specification

This chapter defines the behavior of the J1939 Network Management module. The API of the module is defined in chapter 8, while the configuration is defined in chapter 10.

### 7.1 Overview

The J1939 Network Management module supports transmission and reception of AddressClaimed PGs, and handling of requests for the AddressClaimed PG. It also ensures that the ECU does not send messages during the initial address claiming phase or after the ECU sent a CannotClaimAddress PG because it lost its address to a contending address claim.

### 7.2 Module Handling

This section contains description of auxiliary functionality of the J1939 Network Management module.

#### 7.2.1 Initialization

The J1939 Network Management module is initialized via J1939Nm\_Init, and de-initialized via J1939Nm\_Delnit. Except for J1939Nm\_GetVersionInfo and J1939Nm\_Init, the API functions of the J1939 Network Management module may only be called after the module has been properly initialized.

[SWS\_J1939Nm\_00002] [A call to J1939Nm\_Init initializes all internal variables and sets the J1939 Network Management module to the initialized state.] (SRS\_J1939\_00030)

[SWS\_J1939Nm\_00003] [A call to J1939Nm\_Delnit sets the J1939 Network Management module back to the uninitialized state.] (SRS\_J1939\_00031)

[SWS\_J1939Nm\_00004] [If DET reporting is enabled via J1939NmDevErrorDetect, the J1939 Network Management module shall call Det\_ReportError with the error code J1939NM\_E\_UNINIT when any API other than J1939Nm\_Init or J1939Nm\_GetVersionInfo is called in uninitialized state.] ()

[SWS\_J1939Nm\_00005] [When J1939Nm\_Init is called in initialized state, the J1939 Network Management module shall not re-initialize its internal variables. It shall instead call Det\_ReportError with the error code J1939NM\_E\_REINIT if DET reporting is enabled via J1939NmDevErrorDetect.] ()

#### 7.2.2 Timing Related Functionality

To be able to measure times, the J1939 Network Management module is triggered cyclically via the J1939Nm\_MainFunction.

[SWS\_J1939Nm\_00006] [The J1939 Network Management module shall use the J1939Nm\_MainFunction for timing related purposes.] ()

The recovery after a bus off must be delayed by a random time to avoid repeating bus offs when two nodes try to claim the same address. This random delay is also required when sending a CannotClaimAddress PG after a contending address claim or after a request for the AddressClaimed PG.

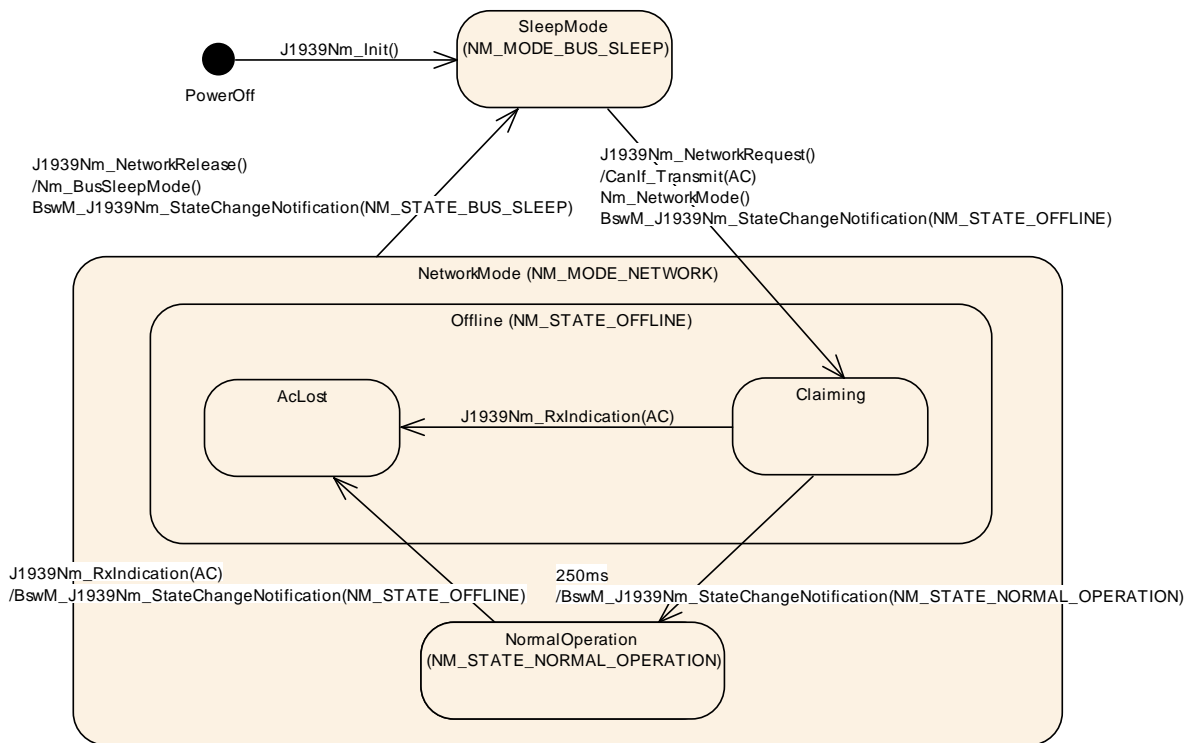
[SWS\_J1939Nm\_00068] [The J1939Nm shall calculate a random number for delaying bus off recovery and transmission of a CannotClaimAddress PG. The calculation shall use the NAME of a node as seed.] ()

[SWS\_J1939Nm\_00069] [When J1939Nm\_GetBusOffDelay is called, J1939Nm shall return a random number based on the NAMEs of all nodes attached to the reported channel. This random number gives the delay time, based on the ticktime configured via J1939NmBusOffDelayTickPeriod.] ()

### 7.3 Network Management States of the J1939Nm

While the NM Interface handles network management states on channel level, the J1939 Network Management module needs a finer granularity, because several nodes can be attached to each channel. The connection of a node to one channel is called NodeChannel hereafter.

The following picture shows the internal NM related states of the J1939 Network Management module for one of its NodeChannels (i.e. one channel of a single node), and the transitions between these states:



**Figure 2: Internal states of J1939Nm with startup delay**

The J1939 Network Management module reports state changes to the NM Interface and to the Basic Software Mode Manager (BswM).

While the states reported to the NM Interface are accumulated states of all NodeChannels of a CAN channel, the J1939 Network Management module reports states to the BswM separately for each NodeChannel.

### 7.3.1 ECU Startup

The J1939 Network Management module starts all NodeChannels in 'SleepMode' (corresponding to NM\_MODE\_BUS\_SLEEP). The CAN channels will be switched to 'NetworkMode' (corresponding to NM\_MODE\_NETWORK) immediately afterwards by a network request issued from the ComM via NM Interface.

[SWS\_J1939Nm\_00007] [During initialization via J1939Nm\_Init, the J1939 Network Management module shall silently assume the 'SleepMode' for all NodeChannels.] (SRS\_J1939\_00030)

[SWS\_J1939Nm\_00009] [A call to J1939Nm\_NetworkRequest shall set all NodeChannels of the reported channel to 'NetworkMode'. The J1939 Network Management module shall notify this mode change to the NM Interface via Nm\_NetworkMode, and shall trigger transmission of an AddressClaimed PG for each NodeChannel where J1939NmChannelUsesAddressArbitration is enabled.] (SRS\_J1939\_00033)

The transmission of the AddressClaimed PG is described in detail in section 7.4.

When entering the network mode, the behavior of the J1939 Network Management module depends on the configuration parameter J1939NmNodeStartupDelay. Controlled by this parameter, the J1939 Network Management module switches the state of the affected NodeChannels either to the sub state 'Claiming' of the state 'Offline' (corresponding to NM\_STATE\_OFFLINE), or to the state 'NormalOperation' (corresponding to NM\_STATE\_NORMAL\_OPERATION).

[SWS\_J1939Nm\_00010] [If a node of the J1939 Network Management module is configured for deferred online state (J1939NmNodeStartUpDelay enabled), its NodeChannels shall enter the sub state 'Claiming' of the state 'Offline' immediately after the switch from 'SleepMode' to 'NetworkMode'. The J1939 Network Management module shall report this state change to the Basic Software Mode Manager via BswM\_J1939Nm\_StateChangeNotification(NM\_STATE\_OFFLINE).] (SRS\_J1939\_00036, SRS\_J1939\_00037)

[SWS\_J1939Nm\_00011] [If a node of the J1939 Network Management module is configured for immediate online state (J1939NmNodeStartUpDelay disabled), its NodeChannels shall enter the state 'NormalOperation' immediately after the switch from 'SleepMode' to 'NetworkMode'. The J1939 Network Management module shall report this state change to the Basic Software Mode Manager via BswM\_J1939Nm\_StateChangeNotification(NM\_STATE\_NORMAL\_OPERATION).] (SRS\_J1939\_00036)

The NM Interface expects an accumulated channel state.

[SWS\_J1939Nm\_00063] [When all NodeChannels of a channel are configured for deferred online state (J1939NmNodeStartUpDelay enabled), the J1939 Network Management module shall report the state change of these NodeChannels to the 'Offline' state immediately to the NM Interface via Nm\_StateChangeNotification(NM\_STATE\_OFFLINE).] (SRS\_J1939\_00036, SRS\_J1939\_00037)

[SWS\_J1939Nm\_00064] [When the first NodeChannel of a channel changes its state to 'NormalOperation', the J1939 Network Management module shall report this state change immediately to the NM Interface via Nm\_StateChangeNotification(NM\_STATE\_NORMAL\_OPERATION).] (SRS\_J1939\_00036)

When a NodeChannel has stayed for 250ms in state 'Claiming' after transmission of the initial AddressClaimed PG, it will switch to state 'NormalOperation'.

[SWS\_J1939Nm\_00061] [When J1939Nm\_TxConfirmation is called with result E\_OK for the initial AddressClaimed PG of a NodeChannel (transmitted during the transition to the 'Claiming' sub state), the J1939 Network Management module shall start the delay timer for this NodeChannel.] (SRS\_J1939\_00037)

[SWS\_J1939Nm\_00013] [When the delay timer of a NodeChannel expires in sub state 'Claiming', the J1939 Network Management module shall switch that



NodeChannel to state 'NormalOperation' and shall report this state change to the Basic Software Mode Manager via BswM\_J1939Nm\_StateChangeNotification(NM\_STATE\_NORMAL\_OPERATION).] (SRS\_J1939\_00037)

### 7.3.2 Address Loss

When a node of the J1939 Network Management module loses its claimed address on one of its channels (see section 7.5), it will switch that NodeChannel to the sub state 'AcLost' of state 'Offline', notifying the NM Interface and the BswM of this state change and sending a CannotClaimAddress PG for the losing node on that channel (see section 7.4).

[SWS\_J1939Nm\_00014] [When a NodeChannel loses its address in 'NetworkMode', it shall switch to the sub state 'AcLost' of state 'Offline' and, after a delay calculated according to [SWS\_J1939Nm\_00068], trigger transmission of a CannotClaimAddress PG.] (SRS\_J1939\_00034)

[SWS\_J1939Nm\_00065] [When a NodeChannel switches from state 'NormalOperation' to the sub state 'AcLost' of state 'Offline', the J1939 Network Management module shall notify the Basic Software Mode Manager via BswM\_J1939Nm\_StateChangeNotification(NM\_STATE\_OFFLINE).] (SRS\_J1939\_00036)

[SWS\_J1939Nm\_00066] [When the last NodeChannel of a channel changes its state to 'Offline', the J1939 Network Management module shall report this state change immediately to the NM Interface via Nm\_StateChangeNotification(NM\_STATE\_OFFLINE).] (SRS\_J1939\_00036)

### 7.3.3 ECU Shutdown

To shut down the network, ComM calls the Nm\_NetworkRelease API of the NM Interface, which in turn calls J1939Nm\_NetworkRelease. The J1939 Network Management module will then switch to 'SleepMode', and notify this to the NM Interface.

[SWS\_J1939Nm\_00015] [A call to J1939Nm\_NetworkRelease shall set all NodeChannels of the reported channel to 'SleepMode'. The J1939 Network Management module shall notify this mode change to the NM Interface via Nm\_BusSleepMode, and shall report a state change to 'SleepMode' to the NM Interface via Nm\_StateChangeNotification(NM\_STATE\_BUS\_SLEEP) and to BswM via BswM\_J1939Nm\_StateChangeNotification(NM\_STATE\_BUS\_SLEEP).] (SRS\_J1939\_00036)

## 7.4 Transmission of AddressClaimed

For each NodeChannel, the J1939 Network Management module needs to ensure that a contending AddressClaimed PG or a request for AddressClaimed is answered

by at least one AddressClaimed PG. If an AddressClaimed PG is still pending for that NodeChannel, but now a CannotClaimAddress PG must be sent, it suffices to send the CannotClaimAddress. Therefore, a single buffer per NodeChannel that stores only the last transmission request is sufficient.

For the transmission of both the AddressClaimed and the CannotClaimAddress PG, the J1939 Network Management module uses just one PDU per channel with variable source address contained in the meta data of the PDU.

[SWS\_J1939Nm\_00016] [When the J1939 Network Management module needs to send an AddressClaimed (or CannotClaimAddress) PG, and no previous transmission is pending, it shall directly forward the corresponding PDU to the CAN Interface via CanIf\_Transmit.] (SRS\_J1939\_00033, SRS\_J1939\_00034, SRS\_J1939\_00035)

[SWS\_J1939Nm\_00073] [The J1939 Network Management module shall use a meta data item of type CAN\_ID\_32 to provide the source address of transmitted AddressClaimed and CannotClaimAddress PGs. The source address resides in the last (least significant) byte of the meta data item.] ()

[SWS\_J1939Nm\_00017] [When the J1939 Network Management module needs to send an AddressClaimed (or CannotClaimAddress) PG, and the CAN Interface has not yet called J1939Nm\_TxConfirmation for the previous transmission, the J1939 Network Management module shall buffer this PG for later transmission.] (SRS\_J1939\_00033, SRS\_J1939\_00034, SRS\_J1939\_00035)

[SWS\_J1939Nm\_00018] [Apart from the initial AddressClaimed PG, the J1939 Network Management module shall buffer only the latest AddressClaimed or CannotClaimAddress PG.] (SRS\_J1939\_00034, SRS\_J1939\_00035)

Rationale: The initial AddressClaimed PG must be transmitted before any CannotClaimAddress PG according to [18]. Otherwise, the J1939 Network Management module should report current state even if the original request preceded a state change.

[SWS\_J1939Nm\_00019] [A call to J1939Nm\_TxConfirmation with result E\_OK shall trigger transmission of a buffered AddressClaimed or CannotClaimAddress PG via CanIf\_Transmit.] (SRS\_J1939\_00033, SRS\_J1939\_00034, SRS\_J1939\_00035)

[SWS\_J1939Nm\_00062] [When J1939Nm\_TxConfirmation is called with result E\_NOT\_OK, the transmission of that PG shall be triggered again.] (SRS\_J1939\_00033, SRS\_J1939\_00034, SRS\_J1939\_00035)

## 7.5 Reception of AddressClaimed

The source address of received AddressClaimed PGs must be immediately compared to the source addresses of all NodeChannels attached to the same channel (see J1939NmNodePreferredAddress). If any of these match, the payload of the received PG must be compared to the configured NAME for the matching source

address (see J1939NmNodeNameXxx), and depending on the relative priority, the J1939 Network Management module must send an AddressClaimed or a CannotClaimAddress PG. The priority is determined by the numerical value of the NAME.

To be able to identify the source address, the PDU associated with the AddressClaimed PG shall have a variable source address contained in the meta data of the PDU. In addition, the priority needs to be ignored for this PDU.

[SWS\_J1939Nm\_00074] [The J1939 Network Management module shall use a meta data item of type CAN\_ID\_32 to determine the source address of received AddressClaimed and CannotClaimAddress PGs. The source address resides in the last (least significant) byte of the meta data item.] ()

[SWS\_J1939Nm\_00020] [If J1939NmChannelUsesAddressArbitration is enabled, a call to J1939Nm\_RxIndication indicating reception of an AddressClaimed PG with one of the source addresses configured via J1939NmNodePreferredAddress and a payload that has a higher numerical value than the NAME for this source address configured via J1939NmNodeNameXxx shall trigger transmission of an AddressClaimed PG for the according NodeChannel (see section 7.4).] (SRS\_J1939\_00034)

[SWS\_J1939Nm\_00021] [If J1939NmChannelUsesAddressArbitration is enabled, a call to J1939Nm\_RxIndication indicating reception of an AddressClaimed PG with one of the source addresses configured via J1939NmNodePreferredAddress and a payload that has a lower numerical value than the NAME for this source address configured via J1939NmNodeNameXxx shall induce a state change of the according NodeChannel to the sub state 'AcLost' of state 'Offline'.] (SRS\_J1939\_00034, SRS\_J1939\_00036)

The state change to 'Offline' will be notified to the NM Interface and the Basic Software Mode Manager and will trigger transmission of a CannotClaimAddress PG (see section 7.3.2).

Sometimes, the application needs to know the content of all address claimed messages on the bus, e.g. to build up a table that maps functions to addresses. The J1939 Network Management module shall support this use case via a generic call-out function (see section 8.6.3.1).

[SWS\_J1939Nm\_00060] [If enabled via J1939NmUserCallout, the J1939Nm shall forward the source address and the content of each AddressClaimed PG to the call-out function <User\_AddressClaimedIndication> (see [SWS\\_J1939Nm\\_00028](#)).] ()

## 7.6 Request for AddressClaimed

When the J1939 Network Management module receives a request for the AddressClaimed PGN from the J1939 Request Manager, it will answer either with an AddressClaimed or with a CannotClaimAddress PG, depending on the current state (see below).

Independent of the request being global or specific, the transmitted PG is always global.

[SWS\_J1939Nm\_00022] [A call to J1939Nm\_RequestIndication shall trigger transmission of an AddressClaimed PG when the addressed NodeChannel is in state 'NormalOperation' or sub state 'Claiming' of state 'Offline'.] (SRS\_J1939\_00035)

[SWS\_J1939Nm\_00023] [A call to J1939Nm\_RequestIndication shall trigger transmission of a CannotClaimAddress PG after a delay calculated according to [SWS\_J1939Nm\_00068] when the addressed NodeChannel is in sub state 'AcLost' of state 'Offline'.] (SRS\_J1939\_00035)

The J1939Nm\_RequestIndication will never be triggered in state 'SleepMode', because then no CAN messages can be received.

## 7.7 Address Coordination

The J1939 Network Management module is able to coordinate the addresses of different J1939 channels connected to a gateway, so that routed messages have valid addresses on every bus on which they appear.

There are two basic strategies:

1. Several J1939 channels form one common address space. In this scenario, the J1939 Network Management module replicates all AddressClaimed messages appearing on one of the networks on all other networks of the same address space. Nodes connected via the gateway perform a direct arbitration of addresses.
2. Selected nodes of one channel appear also on one or more other channels. In this scenario, the J1939 Network Management Module claims the addresses of configured external nodes. Address arbitration is performed between the gateway and the nodes on one channel.

A single gateway can combine both strategies for different sets of channels. The main difference of the strategies is that addresses are not shared in the second strategy, and therefore more than 254 nodes can be present within one system.

[SWS\_J1939Nm\_00071] [If gateway support is enabled via J1939NmGatewaySupport, and the configuration contains a J1939NmSharedAddressSpace, the J1939Nm shall transmit all AddressClaimed messages received on one of the channels referenced by J1939NmSharedAddressSpace on all other channels referenced by the same J1939NmSharedAddressSpace. ] ()

[SWS\_J1939Nm\_00072] [If gateway support is enabled via J1939NmGatewaySupport, and the configuration contains a J1939NmExternalNode, the channels referenced by J1939NmExternalNodeGatewayedChannelRef shall be treated like internal node channels, with the difference that the state transition from SleepMode to NetworkMode is triggered by the reception of an AddressClaimed

message from the external node and enters NormalOperation immediately, and the transition to SleepMode is triggered by the reception of a CannotClaimAddress message from the same node.] ()

## 7.8 Error Classification

The J1939 Network Management module supports reporting of development, runtime, and extended production errors.

### 7.8.1 Development Errors

The supported development errors are defined in the following table.

[SWS\_J1939Nm\_00024] [Table of development errors used by the J1939 Network Management module:

<i>Type or error</i>	<i>Related error code</i>	<i>Value [hex]</i>
An API was called while the module was uninitialized	J1939NM_E_UNINIT	0x01
The Init API was called twice	J1939NM_E_REINIT	0x02
J1939Nm_Init was called with an invalid configuration pointer	J1939NM_E_INIT_FAILED	0x03
An API service was called with a NULL pointer	J1939NM_E_PARAM_POINTER	0x10
An API service was called with a wrong ID	J1939NM_E_INVALID_PDU_SDU_ID	0x11
An API service was called with wrong network handle	J1939NM_E_INVALID_NETWORK_ID	0x12
An API was called with an unsupported PGN	J1939NM_E_INVALID_PGN	0x13
An API was called with an illegal priority	J1939NM_E_INVALID_PRIO	0x14
An API was called with an illegal node address	J1939NM_E_INVALID_ADDRESS	0x15
An API was called with an illegal node ID	J1939NM_E_INVALID_NODE	0x16

Development error values are of type uint8.  
 ]()

### 7.8.2 Runtime Errors

Runtime errors have not yet been classified.

### 7.8.3 Transient Faults

There are no transient faults.

### 7.8.4 Production Errors

There are no production errors.

### 7.8.5 Extended Production Errors

Extended production errors are handled as events of the Diagnostic Event Manager. The event IDs are defined in the following tables, while the actual values are assigned externally by the configuration of the Diagnostic Event Manager, and are included in the J1939 Network Management module via Dem.h.

[SWS\_J1939Nm\_00012] [

<b>Error Name:</b>	J1939NM_E_ADDRESS_LOST	
<b>Short Description:</b>	The desired address could not be claimed.	
<b>Long Description:</b>	During start-up of the ECU, all J1939Nm nodes need to send an address claim to the bus and wait for acceptance of the claimed address. If another ECU claims the same address and has a higher priority, the ECU loses its address and stops communication. This is a critical problem, because J1939Nm was not specified for networks where this can happen.	
<b>Detection Criteria:</b>	Fail	When address claiming failed, because an AddressClaimed message with higher priority was received (see [SWS_J1939Nm_00021]), the J1939 Network Management module shall report the extended production error J1939NM_E_ADDRESS_LOST with event status DEM_EVENT_STATUS_PREFAILED to DEM.
	Pass	When address claiming succeeded, because the J1939 Network Management entered the state 'NormalOperation' (see [SWS_J1939Nm_00011] and [SWS_J1939Nm_00013]), the J1939 Network Management module shall report the extended production error J1939NM_E_ADDRESS_LOST with event status DEM_EVENT_STATUS_PREPASSESSED to DEM.
<b>Secondary Parameters:</b>	Address claiming is started when a node enters NetworkMode for a channel.	
<b>Time Required:</b>	Typically 250ms after changing to NetworkMode, but possible during entire run time when addresses can change at run time or ECUs are attached later (or wake up later).	
<b>Monitor Frequency</b>	The bus is continuously monitored for AddressClaimed messages.	

] (SRS\_J1939\_00032)

## 7.9 API Parameter Checking

The J1939 Network Management module performs parameter checks for all called APIs. It reports the development error J1939NM\_E\_INVALID\_PDU\_SDU\_ID when a check of a PDU/SDU ID fails, J1939NM\_E\_INVALID\_NETWORK\_ID when a check of a network handle fails, and J1939NM\_E\_PARAM\_POINTER when a call provides a NULL pointer.

[SWS\_J1939Nm\_00025] [If DET reporting is enabled via J1939NmDevErrorDetect, the J1939 Network Management module shall check PduIdType parameters (SDU/PDU IDs) of its API functions against the configured IDs, and shall report the

development error J1939NM\_E\_INVALID\_PDU\_SDU\_ID when an unknown ID is provided by the call.] ()

[SWS\_J1939Nm\_00026] [If DET reporting is enabled via J1939NmDevErrorDetect, the J1939 Network Management module shall check NetworkHandleType parameters (network handles) of its API functions against the referenced network handles of ComM, and shall report the development error J1939NM\_E\_INVALID\_NETWORK\_ID when an unknown handle is provided by the call.] ()

J1939NM\_E\_PARAM\_POINTER shall be reported as specified in [4] by SWS\_BSW\_00212.

## 8 API specification

### 8.1 Imported types

In this section, all types used by the J1939 Network Management module are listed together with the defining module:

#### [SWS\_J1939Nm\_00029] [

<i>Module</i>	<i>Imported Type</i>
ComStack_Types	NetworkHandleType
	PdulIdType
	PdulInfoType
Dem	Dem_EventIdType
	Dem_EventStatusType
J1939Rm	J1939Rm_ExtIdInfoType
Nm	Nm_ModeType
	Nm_StateType
Std_Types	Std_ReturnType
	Std_VersionInfoType

] ()

### 8.2 Type definitions

#### 8.2.1 J1939Nm\_ConfigType

#### [SWS\_J1939Nm\_00030] [

<b>Name:</b>	J1939Nm_ConfigType
<b>Type:</b>	Structure
<b>Range:</b>	implementation specific--
<b>Description:</b>	<p>This is the base type for the configuration of the J1939 Network Management module.</p> <p>A pointer to an instance of this structure will be used in the initialization of the J1939 Network Management module.</p> <p>The content of this structure is defined in chapter 10 Configuration specification.</p>

] ()

### 8.3 Function definitions

This is a list of functions provided for upper layer modules.

#### 8.3.1 J1939Nm\_Init

#### [SWS\_J1939Nm\_00031] [

<b>Service name:</b>	J1939Nm_Init
<b>Syntax:</b>	<pre>void J1939Nm_Init(     const J1939Nm_ConfigType* configPtr</pre>



	)
<b>Service ID[hex]:</b>	0x01
<b>Sync/Async:</b>	Synchronous
<b>Reentrancy:</b>	Non Reentrant
<b>Parameters (in):</b>	configPtr   Pointer to selected configuration structure
<b>Parameters (inout):</b>	None
<b>Parameters (out):</b>	None
<b>Return value:</b>	None
<b>Description:</b>	This function initializes the J1939 Network Management module.

] (SRS\_J1939\_00030)

See section 7.2.1 for details.

See section 7.9 for parameter checks.

J1939NM\_E\_INIT\_FAILED shall be reported as specified in [4] by SWS\_BSW\_00050.

### 8.3.2 J1939Nm\_DeInit

[SWS\_J1939Nm\_00032] [

<b>Service name:</b>	J1939Nm_DeInit
<b>Syntax:</b>	<pre>void J1939Nm_DeInit(     void )</pre>
<b>Service ID[hex]:</b>	0x02
<b>Sync/Async:</b>	Synchronous
<b>Reentrancy:</b>	Non Reentrant
<b>Parameters (in):</b>	None
<b>Parameters (inout):</b>	None
<b>Parameters (out):</b>	None
<b>Return value:</b>	None
<b>Description:</b>	This function resets the J1939 Network Management module to the uninitialized state.

] (SRS\_J1939\_00031)

See section 7.2.1 for details.

### 8.3.3 J1939Nm\_GetVersionInfo

[SWS\_J1939Nm\_00033] [

<b>Service name:</b>	J1939Nm_GetVersionInfo
<b>Syntax:</b>	<pre>void J1939Nm_GetVersionInfo(     Std_VersionInfoType* versionInfo )</pre>
<b>Service ID[hex]:</b>	0x03
<b>Sync/Async:</b>	Synchronous
<b>Reentrancy:</b>	Non Reentrant
<b>Parameters (in):</b>	None

<b>Parameters (inout):</b>	None
<b>Parameters (out):</b>	versionInfo   Pointer to where to store the version information of this module.
<b>Return value:</b>	None
<b>Description:</b>	Returns the version information of this module.

] (SRS\_BSW\_00407)

See section 8.3.4 “Get Version Information” of [4] for details.

See section 7.9 for parameter checks.

### 8.3.4 J1939Nm\_NetworkRequest

[SWS\_J1939Nm\_00044] [

<b>Service name:</b>	J1939Nm_NetworkRequest	
<b>Syntax:</b>	Std_ReturnType J1939Nm_NetworkRequest ( NetworkHandleType nmChannelHandle )	
<b>Service ID[hex]:</b>	0x05	
<b>Sync/Async:</b>	Synchronous	
<b>Reentrancy:</b>	Reentrant (but not for the same NM-Channel)	
<b>Parameters (in):</b>	nmChannelHandle	Identification of the NM-channel
<b>Parameters (inout):</b>	None	
<b>Parameters (out):</b>	None	
<b>Return value:</b>	Std_ReturnType	E_OK: No error E_NOT_OK: Requesting of network has failed
<b>Description:</b>	Request the network, since ECU needs to communicate on the bus.	

] (SRS\_J1939\_00036)

See section 7.3.1 for details.

See section 7.2.1 for error handling and section 7.9 for parameter checks.

### 8.3.5 J1939Nm\_NetworkRelease

[SWS\_J1939Nm\_00045] [

<b>Service name:</b>	J1939Nm_NetworkRelease	
<b>Syntax:</b>	Std_ReturnType J1939Nm_NetworkRelease ( NetworkHandleType nmChannelHandle )	
<b>Service ID[hex]:</b>	0x06	
<b>Sync/Async:</b>	Asynchronous	
<b>Reentrancy:</b>	Reentrant (but not for the same NM-Channel)	
<b>Parameters (in):</b>	nmChannelHandle	Identification of the NM-channel
<b>Parameters (inout):</b>	None	
<b>Parameters (out):</b>	None	
<b>Return value:</b>	Std_ReturnType	E_OK: No error E_NOT_OK: Releasing of network has failed
<b>Description:</b>	Release the network, since ECU doesn't have to communicate on the bus.	

] (SRS\_J1939\_00036)

See section 7.3.3 for details.

See section 7.2.1 for error handling and section 7.9 for parameter checks.

### 8.3.6 J1939Nm\_GetState

#### [SWS\_J1939Nm\_00052] [

<b>Service name:</b>	J1939Nm_GetState	
<b>Syntax:</b>	<pre>Std_ReturnType J1939Nm_GetState(     NetworkHandleType NetworkHandle,     Nm_StateType* nmStatePtr,     Nm_ModeType* nmModePtr )</pre>	
<b>Service ID[hex]:</b>	0x0d	
<b>Sync/Async:</b>	Synchronous	
<b>Reentrancy:</b>	Reentrant	
<b>Parameters (in):</b>	NetworkHandle	Identification of the NM-channel
<b>Parameters (inout):</b>	None	
<b>Parameters (out):</b>	nmStatePtr	Pointer where state of the network management shall be copied to.
	nmModePtr	Pointer where the mode of the network management shall be copied to.
<b>Return value:</b>	Std_ReturnType	E_OK: No error E_NOT_OK: Getting of NM state has failed
<b>Description:</b>	Returns the state and the mode of the network management.	

] ()

See section 7.2.1 for error handling and section 7.9 for parameter checks.

### 8.3.7 J1939Nm\_GetBusOffDelay

#### [SWS\_J1939Nm\_00070] [

<b>Service name:</b>	J1939Nm_GetBusOffDelay	
<b>Syntax:</b>	<pre>void J1939Nm_GetBusOffDelay(     NetworkHandleType network,     uint8* delayCyclesPtr )</pre>	
<b>Service ID[hex]:</b>	0x10	
<b>Sync/Async:</b>	Synchronous	
<b>Reentrancy:</b>	Reentrant for different networks	
<b>Parameters (in):</b>	network	CAN network where a BusOff occurred.
<b>Parameters (inout):</b>	None	
<b>Parameters (out):</b>	delayCyclesPtr	Number of CanSM base cycles to wait additionally to L1/L2 after a BusOff occurred.
<b>Return value:</b>	None	
<b>Description:</b>	This callout function returns the number of CanSM base cycles to wait additionally to L1/L2 after a BusOff occurred.	

] ()

See section 7.2.1 for error handling and section 7.9 for parameter checks.

### 8.3.8 J1939Nm\_PassiveStartUp

#### [SWS\_J1939Nm\_00054] [

<b>Service name:</b>	J1939Nm_PassiveStartUp	
<b>Syntax:</b>	Std_ReturnType J1939Nm_PassiveStartUp( NetworkHandleType nmChannelHandle )	
<b>Service ID[hex]:</b>	0x0f	
<b>Sync/Async:</b>	Synchronous	
<b>Reentrancy:</b>	Reentrant (but not for the same NM-Channel)	
<b>Parameters (in):</b>	nmChannelHandle	Identification of the NM-channel
<b>Parameters (inout):</b>	None	
<b>Parameters (out):</b>	None	
<b>Return value:</b>	Std_ReturnType	E_OK: No error E_NOT_OK: Passive startup of network management has failed
<b>Description:</b>	Passive startup of the NM. It triggers the transition from Bus-Sleep Mode to the Network Mode without requesting the network.	

] ()

This API is just a dummy to satisfy NM interface linkage. It shall always return E\_NOT\_OK.

See section 7.2.1 for error handling and section 7.9 for parameter checks.

## 8.4 Call-back notifications

This is a list of functions provided for other modules. The function prototypes of the callback functions shall be provided in the file J1939Nm\_Cbk.h

### 8.4.1 J1939Nm\_RxIndication

#### [SWS\_J1939Nm\_00036] [

<b>Service name:</b>	J1939Nm_RxIndication	
<b>Syntax:</b>	void J1939Nm_RxIndication( PduIdType RxPduId, const PduInfoType* PduInfoPtr )	
<b>Service ID[hex]:</b>	0x42	
<b>Sync/Async:</b>	Synchronous	
<b>Reentrancy:</b>	Reentrant for different PduIds. Non reentrant for the same PduId.	
<b>Parameters (in):</b>	RxPduId	ID of the received PDU.
	PduInfoPtr	Contains the length (SduLength) of the received PDU, a pointer to a buffer (SduDataPtr) containing the PDU, and the MetaData related to this PDU.
<b>Parameters (inout):</b>	None	
<b>Parameters (out):</b>	None	

<b>Return value:</b>	None
<b>Description:</b>	Indication of a received PDU from a lower layer communication interface module.

] ()

See section 7.5 for details.

See section 7.2.1 for error handling and section 7.9 for parameter checks.

#### 8.4.2 J1939Nm\_TxConfirmation

[SWS\_J1939Nm\_00037] [

<b>Service name:</b>	J1939Nm_TxConfirmation	
<b>Syntax:</b>	<pre>void J1939Nm_TxConfirmation(     PduIdType TxPduId,     Std_ReturnType result )</pre>	
<b>Service ID[hex]:</b>	0x40	
<b>Sync/Async:</b>	Synchronous	
<b>Reentrancy:</b>	Reentrant for different PduIds. Non reentrant for the same PduId.	
<b>Parameters (in):</b>	TxPduId	ID of the PDU that has been transmitted.
	result	E_OK: The PDU was transmitted. E_NOT_OK: Transmission of the PDU failed.
<b>Parameters (inout):</b>	None	
<b>Parameters (out):</b>	None	
<b>Return value:</b>	None	
<b>Description:</b>	The lower layer communication interface module confirms the transmission of a PDU, or the failure to transmit a PDU.	

] ()

See section 7.4 for details.

See section 7.2.1 for error handling and section 7.9 for parameter checks.

#### 8.4.3 J1939Nm\_RequestIndication

[SWS\_J1939Nm\_00043] [

<b>Service name:</b>	J1939Nm_RequestIndication	
<b>Syntax:</b>	<pre>void J1939Nm_RequestIndication(     uint8 node,     NetworkHandleType channel,     uint32 requestedPgn,     const J1939Rm_ExtIdInfoType* extIdInfo,     uint8 sourceAddress,     uint8 destAddress,     uint8 priority )</pre>	
<b>Service ID[hex]:</b>	0x47	
<b>Sync/Async:</b>	Synchronous	
<b>Reentrancy:</b>	Reentrant	
<b>Parameters (in):</b>	node	Node by which the request was received.
	channel	Channel on which the request was received.

	requestedPgn	PGN of the requested PG.
	extIdInfo	Extended identifier bytes.
	sourceAddress	Address of the node that sent the Request PG.
	destAddress	Address of this node or 0xFF for broadcast.
	priority	Priority of the Request PG.
<b>Parameters (inout):</b>	None	
<b>Parameters (out):</b>	None	
<b>Return value:</b>	None	
<b>Description:</b>	Indicates reception of a Request or Request2 PG.	

] (SRS\_J1939\_00035)

See section 7.6 for details.

[SWS\_J1939Nm\_00067] [The J1939 Network Management module shall ignore the request indication when the 'sourceAddress' or the 'priority' are not in the valid range, or when 'node' is not one of the configured node IDs (see J1939NmNodeId), or when 'requestedPgn' is not the PGN of AC, or when 'destAddress' is not 0xFF or the address of the reported node. If DET reporting is enabled via J1939NmDevErrorDetect, the J1939 Network Management module shall report the corresponding development error: J1939NM\_E\_INVALID\_NODE for 'node', J1939NM\_E\_INVALID\_PGN for 'requestedPgn', J1939NM\_E\_INVALID\_ADDRESS for 'sourceAddress' or 'destAddress', and J1939NM\_E\_INVALID\_PRIO for 'priority'.]  
( )

See section 7.2.1 for further error handling and section 7.9 for further parameter checks.

## 8.5 Scheduled functions

This function is directly called by the Basic Software Scheduler (SchM).

### 8.5.1 J1939Nm\_MainFunction

[SWS\_J1939Nm\_00038] [

<b>Service name:</b>	J1939Nm_MainFunction
<b>Syntax:</b>	void J1939Nm_MainFunction( void )
<b>Service ID[hex]:</b>	0x04
<b>Description:</b>	Main function of the J1939 Network Management module. Used for scheduling purposes and timeout supervision.

] ( )

[SWS\_J1939Nm\_00039] [The frequency of invocations of J1939Nm\_MainFunction is determined by the configuration parameter J1939NmMainFunctionPeriod.] ( )

## 8.6 Expected Interfaces

In this section, all interfaces required from other modules are listed.

### 8.6.1 Mandatory Interfaces

This section defines all interfaces that are required to fulfill the core functionality of the module.

#### [SWS\_J1939Nm\_00040] [

API function	Description
BswM_J1939Nm_StateChangeNotification	Notification of current J1939Nm state after state changes.
CanIf_Transmit	Requests transmission of a PDU.
Dem_SetEventStatus	Called by SW-Cs or BSW modules to report monitor status information to the Dem. BSW modules calling Dem_SetEventStatus can safely ignore the return value.
Nm_BusSleepMode	Notification that the network management has entered Bus-Sleep Mode.
Nm_NetworkMode	Notification that the network management has entered Network Mode.
Nm_StateChangeNotification	Notification that the state of the lower layer <BusNm> has changed.

] ()

### 8.6.2 Optional Interfaces

This section defines all interfaces that are required to fulfill an optional functionality of the module.

#### [SWS\_J1939Nm\_00041] [

API function	Description
Det_ReportError	Service to report development errors.

] ()

### 8.6.3 Configurable interfaces

In this section, all interfaces are listed where the target function could be configured. The target function is usually a call-back function. The name of this kind of interfaces is not fixed because they are configurable.

#### 8.6.3.1 <User\_AddressClaimedIndication>

#### [SWS\_J1939Nm\_00028] [

<b>Service name:</b>	< User_AddressClaimedIndication >
<b>Syntax:</b>	<pre>void &lt; User_AddressClaimedIndication &gt;(     NetworkHandleType channel,     uint8 sourceAddress,     const uint8* name )</pre>

<b>Service ID[hex]:</b>	0x20	
<b>Sync/Async:</b>	Synchronous	
<b>Reentrancy:</b>	Reentrant	
<b>Parameters (in):</b>	channel	Channel on which the AC was received.
	sourceAddress	Address of the node that sent the AC or NULL address (0xFE).
	name	Pointer to the byte array containing the 64bit NAME.
<b>Parameters (inout):</b>	None	
<b>Parameters (out):</b>	None	
<b>Return value:</b>	None	
<b>Description:</b>	Provides the content of received AddressClaimed (AC) PGs.	

] ()

[SWS\_J1939Nm\_00059] [The <User\_AddressClaimedIndication> function shall only be available if J1939NmUserCallout is configured.] ()

See section 7.5 for details.



## 9 Sequence diagrams

The following sequence diagrams shall give an impression of the way the J1939 Network Management module shall behave and interoperate with other BSW modules. They are not complete and not binding for the implementation.

### 9.1 Transmission of AddressClaimed

The following diagram shows the interaction with CanIf when an AddressClaimed is transmitted.

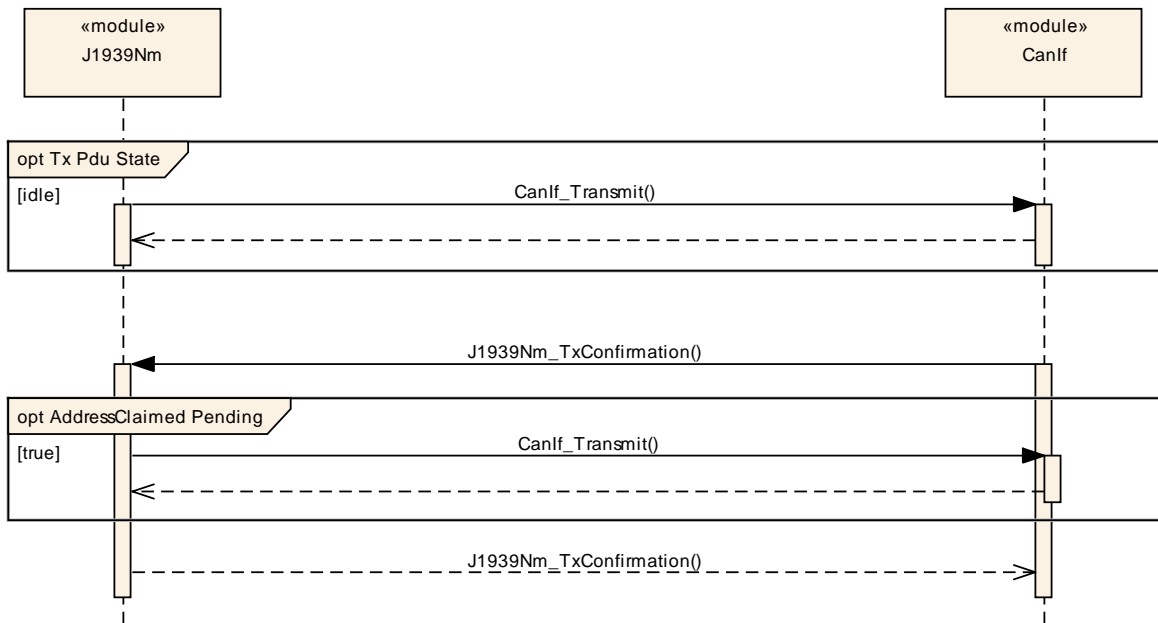
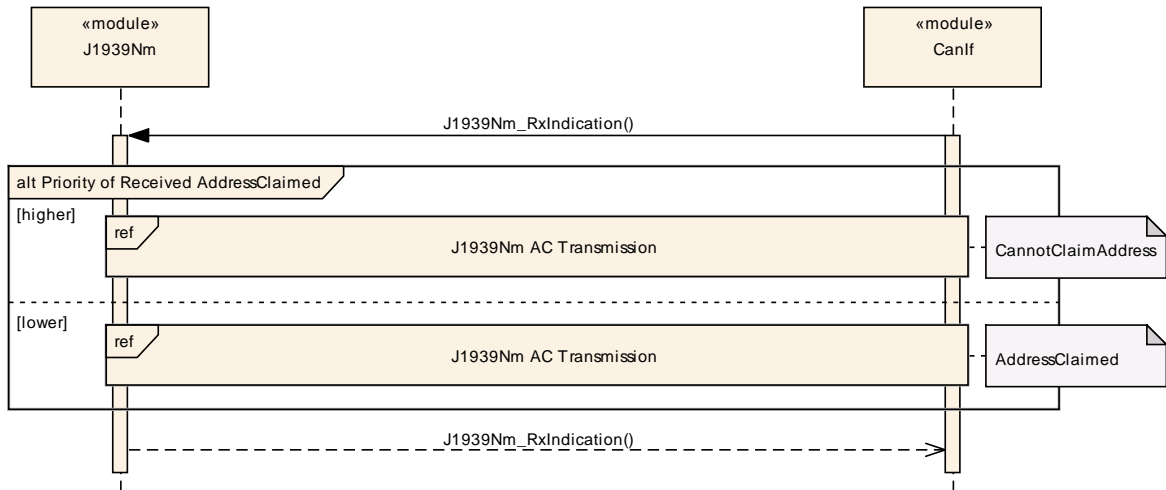


Figure 3: Transmission of AddressClaimed PG

### 9.2 Reception of AddressClaimed

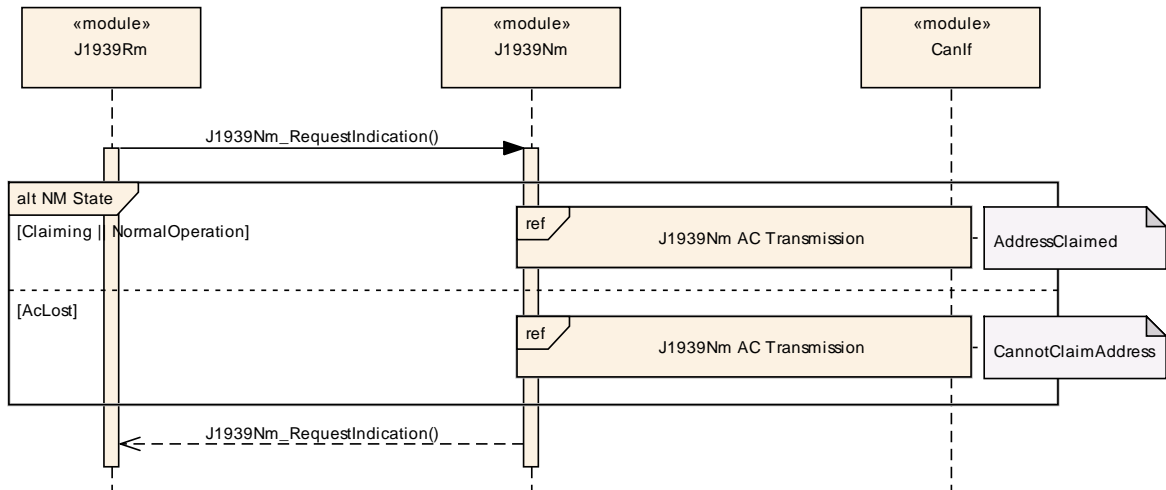
The following diagram shows the interaction with CanIf when an AddressClaimed is received.



**Figure 4: Reception of AddressClaimed PG**

### 9.3 Request for AddressClaimed

The following diagram shows the interaction with J1939Rm and CanIf when a request for AddressClaimed is handled.



**Figure 5: Request for the AddressClaimed PG**

## 10 Configuration specification

In general, this chapter defines configuration parameters and their clustering into containers. For general information about the definition of containers and parameters, refer to the chapter 10.1 “Introduction to configuration specification” in the SWS BSW General [4].

Section 10.1 specifies the structure (containers) and the parameters of the J1939 Network Management module.

Section 10.2 gives hints on how to configure the NM interface to support J1939Nm.

Section 10.3 specifies published information of the J1939 Network Management module.

### 10.1 Containers and configuration parameters

The following sections summarize all configuration parameters of the J1939 Network Management module. The detailed meaning of the parameters is described in chapters 7 and 8.

The following pictures show an overview of the configuration parameters available for J1939Nm:

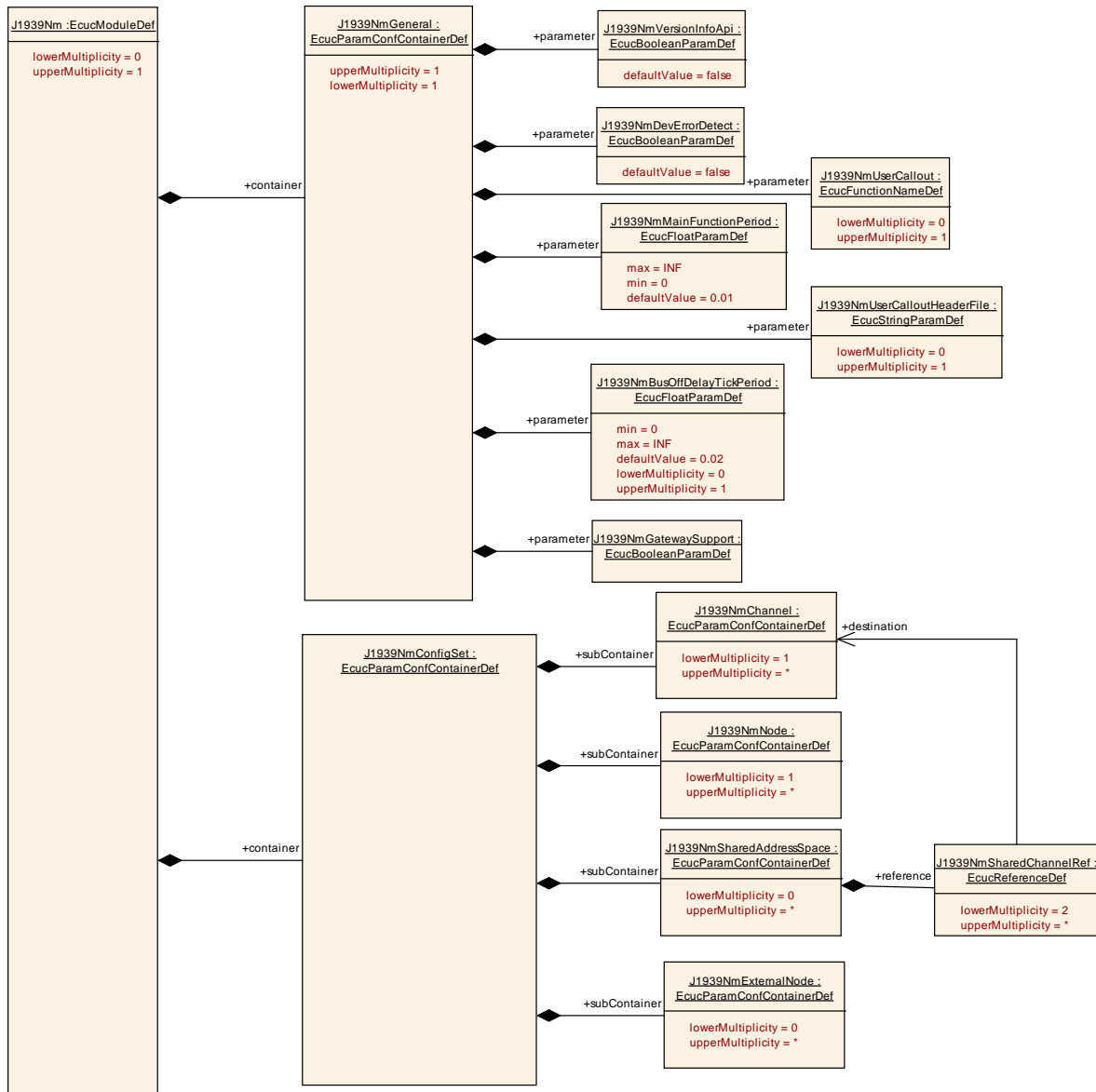


Figure 6: Configuration container J1939Nm

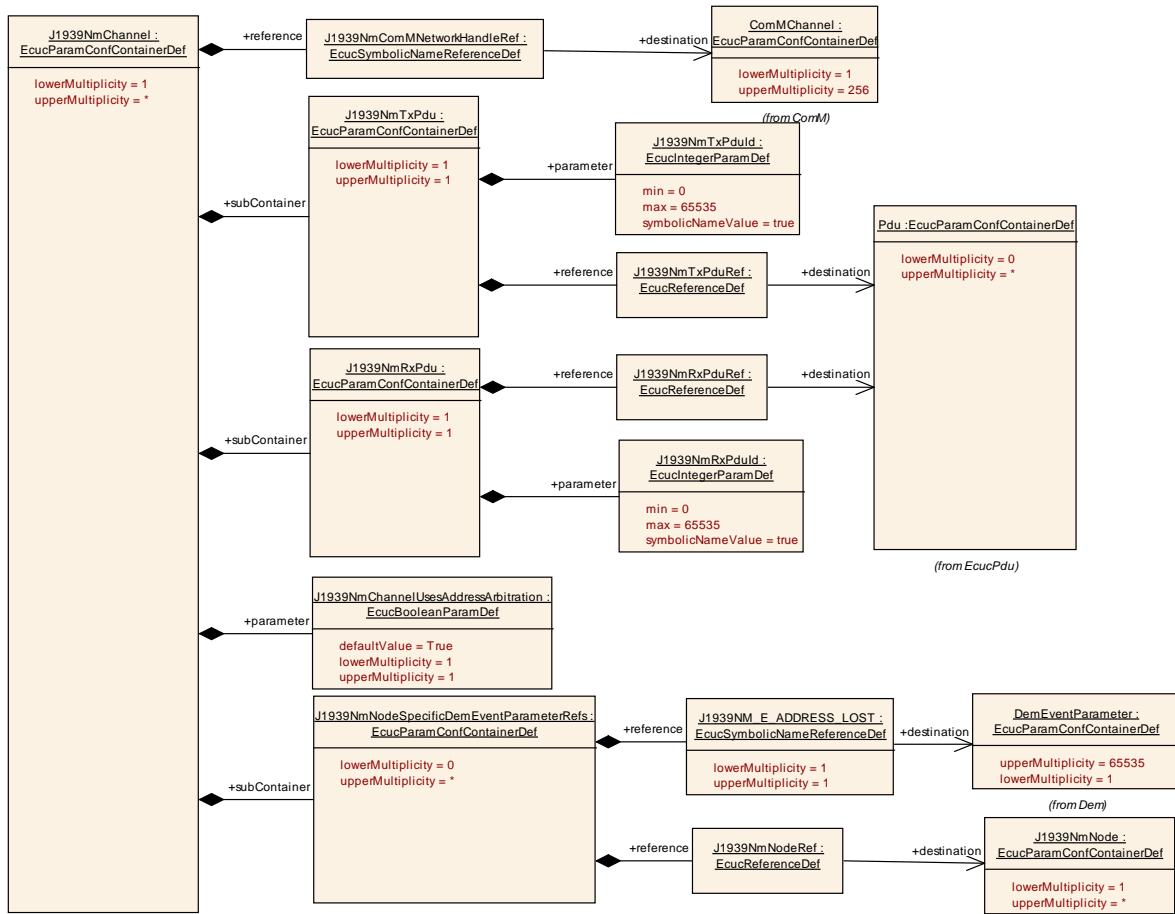


Figure 7: Configuration container J1939NmChannel

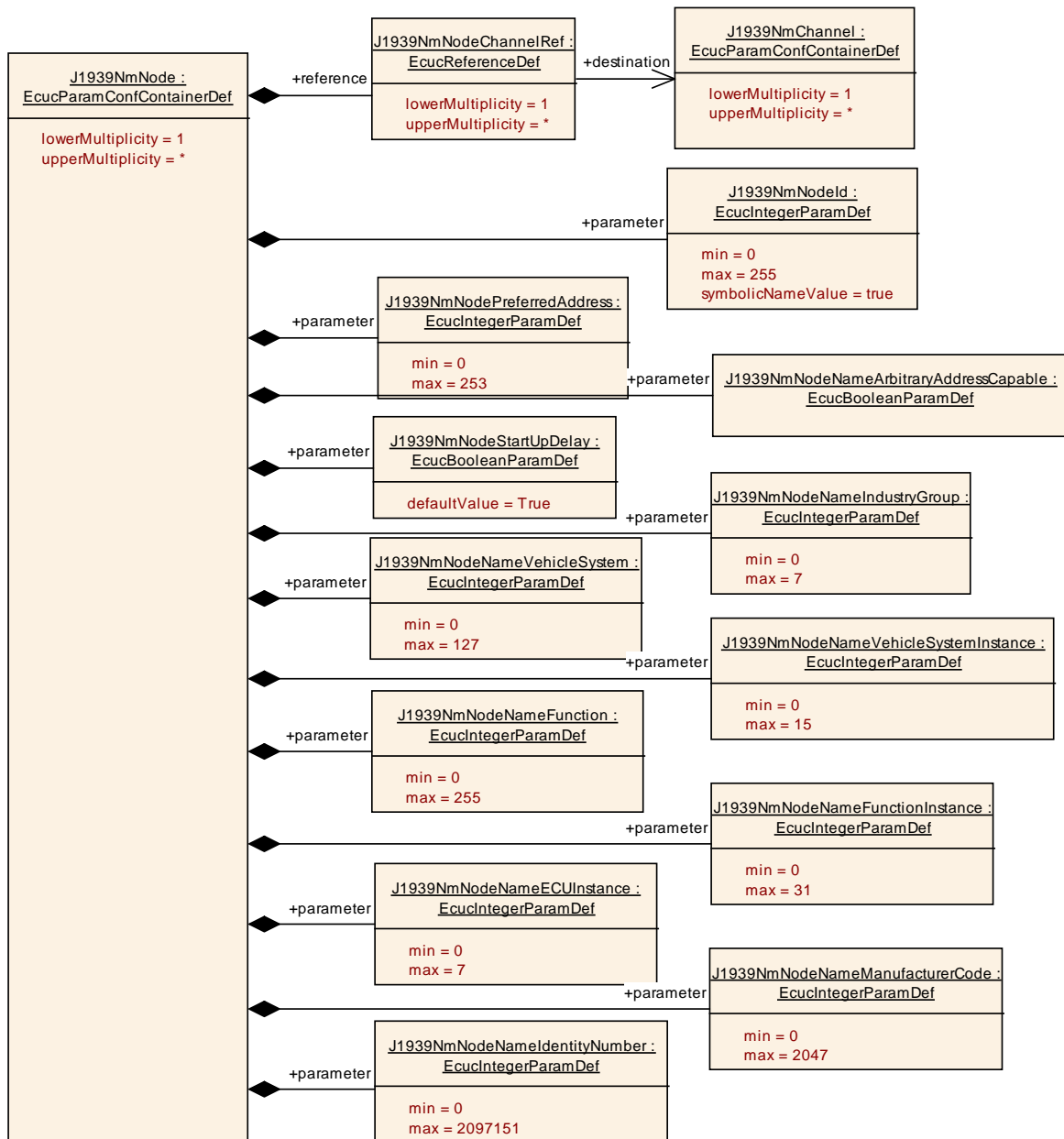


Figure 8: Configuration container J1939NmNode

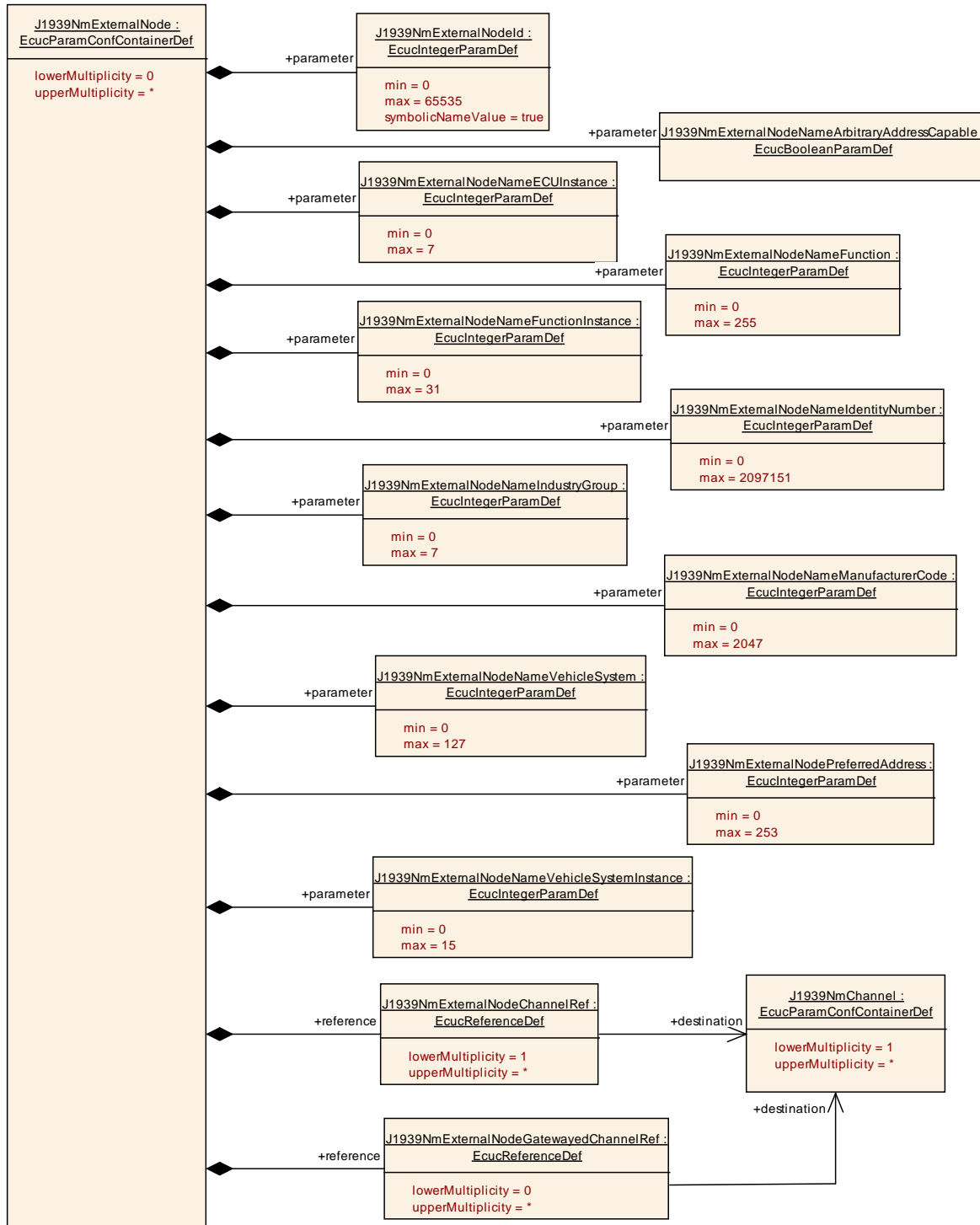


Figure 9: Configuration container J1939NmExternalNode

### 10.1.1 J1939Nm

<b>SWS Item</b>	<b>ECUC J1939Nm_00028 :</b>
<b>Module Name</b>	J1939Nm
<b>Module Description</b>	Configuration of the J1939 Network Management module.

<b>Post-Build Variant Support</b>	true
<b>Supported Config Variants</b>	VARIANT-LINK-TIME, VARIANT-POST-BUILD, VARIANT-PRE-COMPILE

<b>Included Containers</b>		
<b>Container Name</b>	<b>Multiplicity</b>	<b>Scope / Dependency</b>
J1939NmConfigSet	1	This container contains the configuration parameters and sub containers of the AUTOSAR J1939Nm module.
J1939NmGeneral	1	Contains the general configuration parameters of the module.

### 10.1.2 J1939NmGeneral

<b>SWS Item</b>	<b>ECUC_J1939Nm_00001 :</b>
<b>Container Name</b>	J1939NmGeneral
<b>Description</b>	Contains the general configuration parameters of the module.
<b>Configuration Parameters</b>	

<b>SWS Item</b>	<b>ECUC_J1939Nm_00034 :</b>		
<b>Name</b>	J1939NmBusOffDelayTickPeriod		
<b>Parent Container</b>	J1939NmGeneral		
<b>Description</b>	Duration of ticks that are used to time BusOff delays after conflicting address claims. This parameter must be synchronized with the main function period of the CAN State Manager.		
<b>Multiplicity</b>	0..1		
<b>Type</b>	EcucFloatParamDef		
<b>Range</b>	]0 .. INF[		
<b>Default value</b>	0.02		
<b>Post-Build Variant Multiplicity</b>	false		
<b>Post-Build Variant Value</b>	false		
<b>Multiplicity Configuration Class</b>	<b>Pre-compile time</b>	X	VARIANT-PRE-COMPILE
	<b>Link time</b>	X	VARIANT-LINK-TIME, VARIANT-POST-BUILD
	<b>Post-build time</b>	--	
<b>Value Configuration Class</b>	<b>Pre-compile time</b>	X	VARIANT-PRE-COMPILE
	<b>Link time</b>	X	VARIANT-LINK-TIME, VARIANT-POST-BUILD
	<b>Post-build time</b>	--	
<b>Scope / Dependency</b>	scope: local		

<b>SWS Item</b>	<b>ECUC_J1939Nm_00003 :</b>		
<b>Name</b>	J1939NmDevErrorDetect		
<b>Parent Container</b>	J1939NmGeneral		
<b>Description</b>	Switches the development error detection and notification on or off. <ul style="list-style-type: none"> <li>• true: detection and notification is enabled.</li> <li>• false: detection and notification is disabled.</li> </ul>		
<b>Multiplicity</b>	1		
<b>Type</b>	EcucBooleanParamDef		
<b>Default value</b>	false		
<b>Post-Build Variant Value</b>	false		
<b>Value Configuration Class</b>	<b>Pre-compile time</b>	X	All Variants



	<b>Link time</b>	--	
	<b>Post-build time</b>	--	
<b>Scope / Dependency</b>	scope: local		

<b>SWS Item</b>	<b>ECUC_J1939Nm_00036 :</b>		
<b>Name</b>	J1939NmGatewaySupport		
<b>Parent Container</b>	J1939NmGeneral		
<b>Description</b>	Enables/disables support for claiming the addresses of routed messages.		
<b>Multiplicity</b>	1		
<b>Type</b>	EcucBooleanParamDef		
<b>Default value</b>	--		
<b>Post-Build Variant Value</b>	false		
<b>Value Configuration Class</b>	<b>Pre-compile time</b>	X	All Variants
	<b>Link time</b>	--	
	<b>Post-build time</b>	--	
<b>Scope / Dependency</b>	scope: local		

<b>SWS Item</b>	<b>ECUC_J1939Nm_00004 :</b>		
<b>Name</b>	J1939NmMainFunctionPeriod		
<b>Parent Container</b>	J1939NmGeneral		
<b>Description</b>	Call cycle in seconds of J1939Nm_MainFunction.		
<b>Multiplicity</b>	1		
<b>Type</b>	EcucFloatParamDef		
<b>Range</b>	]0 .. INF[		
<b>Default value</b>	0.01		
<b>Post-Build Variant Value</b>	false		
<b>Value Configuration Class</b>	<b>Pre-compile time</b>	X	VARIANT-PRE-COMPILE
	<b>Link time</b>	X	VARIANT-LINK-TIME, VARIANT-POST-BUILD
	<b>Post-build time</b>	--	
<b>Scope / Dependency</b>	scope: ECU		

<b>SWS Item</b>	<b>ECUC_J1939Nm_00032 :</b>		
<b>Name</b>	J1939NmUserCallout		
<b>Parent Container</b>	J1939NmGeneral		
<b>Description</b>	Pre-processor switch for enabling the <User_AddressClaimedIndication> and defining the name of the callout function.		
<b>Multiplicity</b>	0..1		
<b>Type</b>	EcucFunctionNameDef		
<b>Default value</b>	--		
<b>maxLength</b>	--		
<b>minLength</b>	--		
<b>regularExpression</b>	--		
<b>Post-Build Variant Multiplicity</b>	false		
<b>Post-Build Variant Value</b>	false		
<b>Multiplicity Configuration Class</b>	<b>Pre-compile time</b>	X	All Variants
	<b>Link time</b>	--	
	<b>Post-build time</b>	--	
<b>Value Configuration Class</b>	<b>Pre-compile time</b>	X	All Variants
	<b>Link time</b>	--	
	<b>Post-build time</b>	--	
<b>Scope / Dependency</b>	scope: local		

<b>SWS Item</b>	<b>ECUC_J1939Nm_00033 :</b>		
<b>Name</b>	J1939NmUserCalloutHeaderFile		

<b>Parent Container</b>	J1939NmGeneral		
<b>Description</b>	Header file which is included by J1939Nm when J1939NmUserCallout is enabled. This header file must provide the prototype of the <User_AddressClaimedIndication> defined in J1939NmUserCallout.		
<b>Multiplicity</b>	0..1		
<b>Type</b>	EcucStringParamDef		
<b>Default value</b>	--		
<b>maxLength</b>	--		
<b>minLength</b>	--		
<b>regularExpression</b>	--		
<b>Post-Build Variant Multiplicity</b>	false		
<b>Post-Build Variant Value</b>	false		
<b>Multiplicity Configuration Class</b>	<b>Pre-compile time</b>	X	All Variants
	<b>Link time</b>	--	
	<b>Post-build time</b>	--	
<b>Value Configuration Class</b>	<b>Pre-compile time</b>	X	All Variants
	<b>Link time</b>	--	
	<b>Post-build time</b>	--	
<b>Scope / Dependency</b>	scope: local		

<b>SWS Item</b>	<b>ECUC_J1939Nm_00002 :</b>		
<b>Name</b>	J1939NmVersionInfoApi		
<b>Parent Container</b>	J1939NmGeneral		
<b>Description</b>	Pre-processor switch for enabling version info API support.		
<b>Multiplicity</b>	1		
<b>Type</b>	EcucBooleanParamDef		
<b>Default value</b>	false		
<b>Post-Build Variant Value</b>	false		
<b>Value Configuration Class</b>	<b>Pre-compile time</b>	X	All Variants
	<b>Link time</b>	--	
	<b>Post-build time</b>	--	
<b>Scope / Dependency</b>	scope: local		

**No Included Containers**

### 10.1.3 J1939NmConfigSet

<b>SWS Item</b>	<b>ECUC_J1939Nm_00027 :</b>		
<b>Container Name</b>	J1939NmConfigSet		
<b>Description</b>	This container contains the configuration parameters and sub containers of the AUTOSAR J1939Nm module.		
<b>Configuration Parameters</b>			

<b>Included Containers</b>			
<b>Container Name</b>	<b>Multiplicity</b>	<b>Scope / Dependency</b>	
J1939NmChannel	1..*	Physical CAN channel handled by J1939Nm.	
J1939NmExternalNode	0..*	Logical node implemented in another ECU. Configures potential communication partners. If this container is connected to more than one channel, the external ECU is linked to the local ECU by each of these channels.	
J1939NmNode	1..*	Logical node representing one function handled by J1939Nm.	

J1939NmSharedAddressSpace	0..*	Set of J1939NmChannels that share a common address space. Address claims will be routed between these channels.
---------------------------	------	---

### 10.1.4 J1939NmSharedAddressSpace

<b>SWS Item</b>	<b>ECUC_J1939Nm_00037 :</b>		
<b>Container Name</b>	J1939NmSharedAddressSpace		
<b>Description</b>	Set of J1939NmChannels that share a common address space. Address claims will be routed between these channels.		
<b>Post-Build Variant Multiplicity</b>	true		
<b>Multiplicity Configuration Class</b>	<b>Pre-compile time</b>	X	VARIANT-PRE-COMPILE
	<b>Link time</b>	X	VARIANT-LINK-TIME
	<b>Post-build time</b>	X	VARIANT-POST-BUILD
<b>Configuration Parameters</b>			

<b>SWS Item</b>	<b>ECUC_J1939Nm_00038 :</b>		
<b>Name</b>	J1939NmSharedChannelRef		
<b>Parent Container</b>	J1939NmSharedAddressSpace		
<b>Description</b>	Reference to a channel that belongs to the shared address space.		
<b>Multiplicity</b>	2..*		
<b>Type</b>	Reference to [ J1939NmChannel ]		
<b>Post-Build Variant Multiplicity</b>	true		
<b>Post-Build Variant Value</b>	true		
<b>Multiplicity Configuration Class</b>	<b>Pre-compile time</b>	X	VARIANT-PRE-COMPILE
	<b>Link time</b>	X	VARIANT-LINK-TIME
	<b>Post-build time</b>	X	VARIANT-POST-BUILD
<b>Value Configuration Class</b>	<b>Pre-compile time</b>	X	VARIANT-PRE-COMPILE
	<b>Link time</b>	X	VARIANT-LINK-TIME
	<b>Post-build time</b>	X	VARIANT-POST-BUILD
<b>Scope / Dependency</b>	scope: local		

**No Included Containers**

### 10.1.5 J1939NmChannel

<b>SWS Item</b>	<b>ECUC_J1939Nm_00005 :</b>		
<b>Container Name</b>	J1939NmChannel		
<b>Description</b>	Physical CAN channel handled by J1939Nm.		
<b>Post-Build Variant Multiplicity</b>	true		
<b>Multiplicity Configuration Class</b>	<b>Pre-compile time</b>	X	VARIANT-PRE-COMPILE
	<b>Link time</b>	X	VARIANT-LINK-TIME
	<b>Post-build time</b>	X	VARIANT-POST-BUILD
<b>Configuration Parameters</b>			

<b>SWS Item</b>	<b>ECUC_J1939Nm_00035 :</b>		
<b>Name</b>	J1939NmChannelUsesAddressArbitration		

<b>Parent Container</b>	J1939NmChannel		
<b>Description</b>	<p>Defines whether the nodes attached to this channel use an initial address claim, and whether they react to contending address claims of other nodes.</p> <p>True: The initial address claim is sent, and the node reacts to address claims of other nodes.</p> <p>False: The node only sends an address claim upon request, and does not react to other address claims.</p>		
<b>Multiplicity</b>	1		
<b>Type</b>	EcucBooleanParamDef		
<b>Default value</b>	true		
<b>Post-Build Variant Value</b>	true		
<b>Value Configuration Class</b>	<b>Pre-compile time</b>	X	VARIANT-PRE-COMPILE
	<b>Link time</b>	X	VARIANT-LINK-TIME
	<b>Post-build time</b>	X	VARIANT-POST-BUILD
<b>Scope / Dependency</b>	scope: local		

<b>SWS Item</b>	<b>ECUC_J1939Nm_00008 :</b>		
<b>Name</b>	J1939NmComMNetworkHandleRef		
<b>Parent Container</b>	J1939NmChannel		
<b>Description</b>	Reference to the channel defined by the ComMChannel providing access to the unique channel index ComMChannelId.		
<b>Multiplicity</b>	1		
<b>Type</b>	Symbolic name reference to [ ComMChannel ]		
<b>Post-Build Variant Value</b>	false		
<b>Value Configuration Class</b>	<b>Pre-compile time</b>	X	VARIANT-PRE-COMPILE
	<b>Link time</b>	X	VARIANT-LINK-TIME, VARIANT-POST-BUILD
	<b>Post-build time</b>	--	
<b>Scope / Dependency</b>	scope: local		

<b>Included Containers</b>		
<b>Container Name</b>	<b>Multiplicity</b>	<b>Scope / Dependency</b>
J1939NmNodeSpecificDemEventParameterRefs	0..*	Container for the references to DemEventParameter elements related to one J1939NmNode which shall be invoked using the API Dem_SetEventStatus in case the corresponding error occurs. The EventId is taken from the referenced DemEventParameter's DemEventId symbolic value. The standardized errors are provided in this container and can be extended by vendor-specific error references.
J1939NmRxPdu	1	Contains the configuration of the PDU used to receive the AddressClaimed PG. This PDU consumes a meta data item of type CAN_ID_32.
J1939NmTxPdu	1	Contains the configuration of the PDU used to transmit the AddressClaimed PG. This PDU produces a meta data item of type CAN_ID_32.

### 10.1.6 J1939NmTxPdu

<b>SWS Item</b>	<b>ECUC_J1939Nm_00009 :</b>
<b>Container Name</b>	J1939NmTxPdu
<b>Description</b>	Contains the configuration of the PDU used to transmit the AddressClaimed PG. This PDU produces a meta data item of type CAN_ID_32.
<b>Configuration Parameters</b>	

<b>SWS Item</b>	<b>ECUC_J1939Nm_00011 :</b>		
<b>Name</b>	J1939NmTxPdulD		
<b>Parent Container</b>	J1939NmTxPdu		
<b>Description</b>	The PDU identifier used for TxConfirmation from CanIf.		
<b>Multiplicity</b>	1		
<b>Type</b>	EcucIntegerParamDef (Symbolic Name generated for this parameter)		
<b>Range</b>	0 .. 65535		
<b>Default value</b>	--		
<b>Post-Build Variant Value</b>	false		
<b>Value Configuration Class</b>	<b>Pre-compile time</b>	X	All Variants
	<b>Link time</b>	--	
	<b>Post-build time</b>	--	
<b>Scope / Dependency</b>	scope: ECU		

<b>SWS Item</b>	<b>ECUC_J1939Nm_00012 :</b>		
<b>Name</b>	J1939NmTxPduRef		
<b>Parent Container</b>	J1939NmTxPdu		
<b>Description</b>	Reference to the Pdu object representing the PDU.		
<b>Multiplicity</b>	1		
<b>Type</b>	Reference to [ Pdu ]		
<b>Post-Build Variant Value</b>	false		
<b>Value Configuration Class</b>	<b>Pre-compile time</b>	X	VARIANT-PRE-COMPILE
	<b>Link time</b>	X	VARIANT-LINK-TIME, VARIANT-POST-BUILD
	<b>Post-build time</b>	--	
<b>Scope / Dependency</b>	scope: local		

**No Included Containers**

### 10.1.7 J1939NmRxPdu

<b>SWS Item</b>	<b>ECUC_J1939Nm_00010 :</b>
<b>Container Name</b>	J1939NmRxPdu
<b>Description</b>	Contains the configuration of the PDU used to receive the AddressClaimed PG. This PDU consumes a meta data item of type CAN_ID_32.
<b>Configuration Parameters</b>	

<b>SWS Item</b>	<b>ECUC_J1939Nm_00014 :</b>		
<b>Name</b>	J1939NmRxPdulD		
<b>Parent Container</b>	J1939NmRxPdu		
<b>Description</b>	The PDU identifier used for RxIndication from CanIf.		
<b>Multiplicity</b>	1		
<b>Type</b>	EcucIntegerParamDef (Symbolic Name generated for this parameter)		
<b>Range</b>	0 .. 65535		

<b>Default value</b>	--		
<b>Post-Build Variant Value</b>	false		
<b>Value Configuration Class</b>	<b>Pre-compile time</b>	X	All Variants
	<b>Link time</b>	--	
	<b>Post-build time</b>	--	
<b>Scope / Dependency</b>	scope: ECU		

<b>SWS Item</b>	<b>ECUC_J1939Nm_00013 :</b>		
<b>Name</b>	J1939NmRxPduRef		
<b>Parent Container</b>	J1939NmRxPdu		
<b>Description</b>	Reference to the Pdu object representing the PDU.		
<b>Multiplicity</b>	1		
<b>Type</b>	Reference to [ Pdu ]		
<b>Post-Build Variant Value</b>	false		
<b>Value Configuration Class</b>	<b>Pre-compile time</b>	X	VARIANT-PRE-COMPILE
	<b>Link time</b>	X	VARIANT-LINK-TIME, VARIANT-POST-BUILD
	<b>Post-build time</b>	--	
<b>Scope / Dependency</b>	scope: local		

**No Included Containers**

### 10.1.8 J1939NmNodeSpecificDemEventParameterRefs

<b>SWS Item</b>	<b>ECUC_J1939Nm_00006 :</b>		
<b>Container Name</b>	J1939NmNodeSpecificDemEventParameterRefs		
<b>Description</b>	Container for the references to DemEventParameter elements related to one J1939NmNode which shall be invoked using the API Dem_SetEventStatus in case the corresponding error occurs. The EventId is taken from the referenced DemEventParameter's DemEventId symbolic value. The standardized errors are provided in this container and can be extended by vendor-specific error references.		
<b>Post-Build Variant Multiplicity</b>	true		
<b>Multiplicity Configuration Class</b>	<b>Pre-compile time</b>	X	VARIANT-PRE-COMPILE
	<b>Link time</b>	X	VARIANT-LINK-TIME
	<b>Post-build time</b>	X	VARIANT-POST-BUILD
<b>Configuration Parameters</b>			

<b>SWS Item</b>	<b>ECUC_J1939Nm_00007 :</b>		
<b>Name</b>	J1939NM_E_ADDRESS_LOST		
<b>Parent Container</b>	J1939NmNodeSpecificDemEventParameterRefs		
<b>Description</b>	Reference to the DemEventParameter which shall be issued when the ECU failed to claim one of its addresses.		
<b>Multiplicity</b>	1		
<b>Type</b>	Symbolic name reference to [ DemEventParameter ]		
<b>Post-Build Variant Value</b>	false		
<b>Value Configuration Class</b>	<b>Pre-compile time</b>	X	All Variants
	<b>Link time</b>	--	
	<b>Post-build time</b>	--	
<b>Scope / Dependency</b>	scope: local		

<b>SWS Item</b>	<b>ECUC_J1939Nm_00053 :</b>		
-----------------	-----------------------------	--	--

<b>Name</b>	J1939NmNodeRef		
<b>Parent Container</b>	J1939NmNodeSpecificDemEventParameterRefs		
<b>Description</b>	Reference to J1939NmNode.		
<b>Multiplicity</b>	1		
<b>Type</b>	Reference to [ J1939NmNode ]		
<b>Post-Build Variant Value</b>	true		
<b>Value Configuration Class</b>	<b>Pre-compile time</b>	X	VARIANT-PRE-COMPILE
	<b>Link time</b>	X	VARIANT-LINK-TIME
	<b>Post-build time</b>	X	VARIANT-POST-BUILD
<b>Scope / Dependency</b>	scope: local		

**No Included Containers**

### 10.1.9 J1939NmNode

<b>SWS Item</b>	<b>ECUC_J1939Nm_00015 :</b>		
<b>Container Name</b>	J1939NmNode		
<b>Description</b>	Logical node representing one function handled by J1939Nm.		
<b>Post-Build Variant Multiplicity</b>	true		
<b>Multiplicity Configuration Class</b>	<b>Pre-compile time</b>	X	VARIANT-PRE-COMPILE
	<b>Link time</b>	X	VARIANT-LINK-TIME
	<b>Post-build time</b>	X	VARIANT-POST-BUILD
<b>Configuration Parameters</b>			

<b>SWS Item</b>	<b>ECUC_J1939Nm_00030 :</b>		
<b>Name</b>	J1939NmNodeId		
<b>Parent Container</b>	J1939NmNode		
<b>Description</b>	Unique identifier of this node.		
<b>Multiplicity</b>	1		
<b>Type</b>	EcucIntegerParamDef (Symbolic Name generated for this parameter)		
<b>Range</b>	0 .. 255		
<b>Default value</b>	--		
<b>Post-Build Variant Value</b>	false		
<b>Value Configuration Class</b>	<b>Pre-compile time</b>	X	All Variants
	<b>Link time</b>	--	
	<b>Post-build time</b>	--	
<b>Scope / Dependency</b>	scope: ECU		

<b>SWS Item</b>	<b>ECUC_J1939Nm_00018 :</b>		
<b>Name</b>	J1939NmNodeNameArbitraryAddressCapable		
<b>Parent Container</b>	J1939NmNode		
<b>Description</b>	Arbitrary Address Capable field of the NAME of this node.		
<b>Multiplicity</b>	1		
<b>Type</b>	EcucBooleanParamDef		
<b>Default value</b>	--		
<b>Post-Build Variant Value</b>	false		
<b>Value Configuration Class</b>	<b>Pre-compile time</b>	X	All Variants
	<b>Link time</b>	--	
	<b>Post-build time</b>	--	
<b>Scope / Dependency</b>	scope: local		

<b>SWS Item</b>	<b>ECUC_J1939Nm_00024 :</b>		
<b>Name</b>	J1939NmNodeNameECUInstance		
<b>Parent Container</b>	J1939NmNode		
<b>Description</b>	ECU Instance field of the NAME of this node.		
<b>Multiplicity</b>	1		
<b>Type</b>	EcucIntegerParamDef		
<b>Range</b>	0 .. 7		
<b>Default value</b>	--		
<b>Post-Build Variant Value</b>	true		
<b>Value Configuration Class</b>	<b>Pre-compile time</b>	X	VARIANT-PRE-COMPILE
	<b>Link time</b>	X	VARIANT-LINK-TIME
	<b>Post-build time</b>	X	VARIANT-POST-BUILD
<b>Scope / Dependency</b>	scope: local		

<b>SWS Item</b>	<b>ECUC_J1939Nm_00022 :</b>		
<b>Name</b>	J1939NmNodeNameFunction		
<b>Parent Container</b>	J1939NmNode		
<b>Description</b>	Function field of the NAME of this node.		
<b>Multiplicity</b>	1		
<b>Type</b>	EcucIntegerParamDef		
<b>Range</b>	0 .. 255		
<b>Default value</b>	--		
<b>Post-Build Variant Value</b>	true		
<b>Value Configuration Class</b>	<b>Pre-compile time</b>	X	VARIANT-PRE-COMPILE
	<b>Link time</b>	X	VARIANT-LINK-TIME
	<b>Post-build time</b>	X	VARIANT-POST-BUILD
<b>Scope / Dependency</b>	scope: local		

<b>SWS Item</b>	<b>ECUC_J1939Nm_00023 :</b>		
<b>Name</b>	J1939NmNodeNameFunctionInstance		
<b>Parent Container</b>	J1939NmNode		
<b>Description</b>	Function Instance field of the NAME of this node.		
<b>Multiplicity</b>	1		
<b>Type</b>	EcucIntegerParamDef		
<b>Range</b>	0 .. 31		
<b>Default value</b>	--		
<b>Post-Build Variant Value</b>	true		
<b>Value Configuration Class</b>	<b>Pre-compile time</b>	X	VARIANT-PRE-COMPILE
	<b>Link time</b>	X	VARIANT-LINK-TIME
	<b>Post-build time</b>	X	VARIANT-POST-BUILD
<b>Scope / Dependency</b>	scope: local		

<b>SWS Item</b>	<b>ECUC_J1939Nm_00026 :</b>		
<b>Name</b>	J1939NmNodeNameIdentityNumber		
<b>Parent Container</b>	J1939NmNode		
<b>Description</b>	Identity Number field of the NAME of this node.		
<b>Multiplicity</b>	1		
<b>Type</b>	EcucIntegerParamDef		
<b>Range</b>	0 .. 2097151		
<b>Default value</b>	--		
<b>Post-Build Variant Value</b>	true		
<b>Value Configuration Class</b>	<b>Pre-compile time</b>	X	VARIANT-PRE-COMPILE
	<b>Link time</b>	X	VARIANT-LINK-TIME
	<b>Post-build time</b>	X	VARIANT-POST-BUILD
<b>Scope / Dependency</b>	scope: local		



<b>SWS Item</b>	<b>ECUC_J1939Nm_00019 :</b>		
<b>Name</b>	J1939NmNodeNameIndustryGroup		
<b>Parent Container</b>	J1939NmNode		
<b>Description</b>	Industry Group field of the NAME of this node.		
<b>Multiplicity</b>	1		
<b>Type</b>	EcucIntegerParamDef		
<b>Range</b>	0 .. 7		
<b>Default value</b>	--		
<b>Post-Build Variant Value</b>	true		
<b>Value Configuration Class</b>	<b>Pre-compile time</b>	X	VARIANT-PRE-COMPILE
	<b>Link time</b>	X	VARIANT-LINK-TIME
	<b>Post-build time</b>	X	VARIANT-POST-BUILD
<b>Scope / Dependency</b>	scope: local		

<b>SWS Item</b>	<b>ECUC_J1939Nm_00025 :</b>		
<b>Name</b>	J1939NmNodeNameManufacturerCode		
<b>Parent Container</b>	J1939NmNode		
<b>Description</b>	Manufacturer Code field of the NAME of this node.		
<b>Multiplicity</b>	1		
<b>Type</b>	EcucIntegerParamDef		
<b>Range</b>	0 .. 2047		
<b>Default value</b>	--		
<b>Post-Build Variant Value</b>	true		
<b>Value Configuration Class</b>	<b>Pre-compile time</b>	X	VARIANT-PRE-COMPILE
	<b>Link time</b>	X	VARIANT-LINK-TIME
	<b>Post-build time</b>	X	VARIANT-POST-BUILD
<b>Scope / Dependency</b>	scope: local		

<b>SWS Item</b>	<b>ECUC_J1939Nm_00021 :</b>		
<b>Name</b>	J1939NmNodeNameVehicleSystem		
<b>Parent Container</b>	J1939NmNode		
<b>Description</b>	Vehicle System field of the NAME of this node.		
<b>Multiplicity</b>	1		
<b>Type</b>	EcucIntegerParamDef		
<b>Range</b>	0 .. 127		
<b>Default value</b>	--		
<b>Post-Build Variant Value</b>	true		
<b>Value Configuration Class</b>	<b>Pre-compile time</b>	X	VARIANT-PRE-COMPILE
	<b>Link time</b>	X	VARIANT-LINK-TIME
	<b>Post-build time</b>	X	VARIANT-POST-BUILD
<b>Scope / Dependency</b>	scope: local		

<b>SWS Item</b>	<b>ECUC_J1939Nm_00020 :</b>		
<b>Name</b>	J1939NmNodeNameVehicleSystemInstance		
<b>Parent Container</b>	J1939NmNode		
<b>Description</b>	Vehicle System Instance field of the NAME of this node.		
<b>Multiplicity</b>	1		
<b>Type</b>	EcucIntegerParamDef		
<b>Range</b>	0 .. 15		
<b>Default value</b>	--		
<b>Post-Build Variant Value</b>	true		
<b>Value Configuration Class</b>	<b>Pre-compile time</b>	X	VARIANT-PRE-COMPILE
	<b>Link time</b>	X	VARIANT-LINK-TIME
	<b>Post-build time</b>	X	VARIANT-POST-BUILD
<b>Scope / Dependency</b>	scope: local		

<b>SWS Item</b>	<b>ECUC_J1939Nm_00016 :</b>		
<b>Name</b>	J1939NmNodePreferredAddress		
<b>Parent Container</b>	J1939NmNode		
<b>Description</b>	Source address of this node used for address claiming.		
<b>Multiplicity</b>	1		
<b>Type</b>	EcucIntegerParamDef		
<b>Range</b>	0 .. 253		
<b>Default value</b>	--		
<b>Post-Build Variant Value</b>	true		
<b>Value Configuration Class</b>	<b>Pre-compile time</b>	X	VARIANT-PRE-COMPILE
	<b>Link time</b>	X	VARIANT-LINK-TIME
	<b>Post-build time</b>	X	VARIANT-POST-BUILD
<b>Scope / Dependency</b>	scope: ECU		

<b>SWS Item</b>	<b>ECUC_J1939Nm_00017 :</b>		
<b>Name</b>	J1939NmNodeStartUpDelay		
<b>Parent Container</b>	J1939NmNode		
<b>Description</b>	<p>If enabled, the node will start communication after a delay of 250ms after transmission of the initial AddressClaimed, depending on the configured J1939NmNodePreferredAddress. If disabled, the node will start communication immediately at network start-up.</p> <p>Please note: According to J1939/81, the 250ms delay is not required for single address CAs with desired source addresses in the ranges 0..127 or 248..253.</p>		
<b>Multiplicity</b>	1		
<b>Type</b>	EcucBooleanParamDef		
<b>Default value</b>	true		
<b>Post-Build Variant Value</b>	false		
<b>Value Configuration Class</b>	<b>Pre-compile time</b>	X	All Variants
	<b>Link time</b>	--	
	<b>Post-build time</b>	--	
<b>Scope / Dependency</b>	scope: local		

<b>SWS Item</b>	<b>ECUC_J1939Nm_00029 :</b>		
<b>Name</b>	J1939NmNodeChannelRef		
<b>Parent Container</b>	J1939NmNode		
<b>Description</b>	Reference to the channels this node has access to.		
<b>Multiplicity</b>	1..*		
<b>Type</b>	Reference to [ J1939NmChannel ]		
<b>Post-Build Variant Multiplicity</b>	false		
<b>Post-Build Variant Value</b>	false		
<b>Multiplicity Configuration Class</b>	<b>Pre-compile time</b>	X	VARIANT-PRE-COMPILE
	<b>Link time</b>	X	VARIANT-LINK-TIME, VARIANT-POST-BUILD
	<b>Post-build time</b>	--	
<b>Value Configuration Class</b>	<b>Pre-compile time</b>	X	VARIANT-PRE-COMPILE
	<b>Link time</b>	X	VARIANT-LINK-TIME, VARIANT-POST-BUILD
	<b>Post-build time</b>	--	
<b>Scope / Dependency</b>	scope: local		

**No Included Containers**

### 10.1.10 J1939NmExternalNode

<b>SWS Item</b>	<b>ECUC_J1939Nm_00039 :</b>		
<b>Container Name</b>	J1939NmExternalNode		
<b>Description</b>	Logical node implemented in another ECU. Configures potential communication partners. If this container is connected to more than one channel, the external ECU is linked to the local ECU by each of these channels.		
<b>Post-Build Variant Multiplicity</b>	false		
<b>Multiplicity Configuration Class</b>	<b>Pre-compile time</b>	X	All Variants
	<b>Link time</b>	--	
	<b>Post-build time</b>	--	
<b>Configuration Parameters</b>			

<b>SWS Item</b>	<b>ECUC_J1939Nm_00040 :</b>		
<b>Name</b>	J1939NmExternalNodeId		
<b>Parent Container</b>	J1939NmExternalNode		
<b>Description</b>	Unique identifier of this external node.		
<b>Multiplicity</b>	1		
<b>Type</b>	EcucIntegerParamDef (Symbolic Name generated for this parameter)		
<b>Range</b>	0 .. 65535		
<b>Default value</b>	--		
<b>Post-Build Variant Value</b>	false		
<b>Value Configuration Class</b>	<b>Pre-compile time</b>	X	All Variants
	<b>Link time</b>	--	
	<b>Post-build time</b>	--	
<b>Scope / Dependency</b>	scope: ECU		

<b>SWS Item</b>	<b>ECUC_J1939Nm_00041 :</b>		
<b>Name</b>	J1939NmExternalNodeNameArbitraryAddressCapable		
<b>Parent Container</b>	J1939NmExternalNode		
<b>Description</b>	Arbitrary Address Capable field of the NAME of this external node.		
<b>Multiplicity</b>	1		
<b>Type</b>	EcucBooleanParamDef		
<b>Default value</b>	--		
<b>Post-Build Variant Value</b>	true		
<b>Value Configuration Class</b>	<b>Pre-compile time</b>	X	VARIANT-PRE-COMPILE
	<b>Link time</b>	X	VARIANT-LINK-TIME
	<b>Post-build time</b>	X	VARIANT-POST-BUILD
<b>Scope / Dependency</b>	scope: local		

<b>SWS Item</b>	<b>ECUC_J1939Nm_00042 :</b>		
<b>Name</b>	J1939NmExternalNodeNameECUInstance		
<b>Parent Container</b>	J1939NmExternalNode		
<b>Description</b>	ECU Instance field of the NAME of this external node.		
<b>Multiplicity</b>	1		
<b>Type</b>	EcucIntegerParamDef		
<b>Range</b>	0 .. 7		
<b>Default value</b>	--		
<b>Post-Build Variant Value</b>	true		
<b>Value Configuration Class</b>	<b>Pre-compile time</b>	X	VARIANT-PRE-COMPILE
	<b>Link time</b>	X	VARIANT-LINK-TIME
	<b>Post-build time</b>	X	VARIANT-POST-BUILD
<b>Scope / Dependency</b>	scope: local		

<b>SWS Item</b>	<b>ECUC_J1939Nm_00043 :</b>		
<b>Name</b>	J1939NmExternalNodeNameFunction		
<b>Parent Container</b>	J1939NmExternalNode		
<b>Description</b>	Function field of the NAME of this external node.		
<b>Multiplicity</b>	1		
<b>Type</b>	EcucIntegerParamDef		
<b>Range</b>	0 .. 255		
<b>Default value</b>	--		
<b>Post-Build Variant Value</b>	true		
<b>Value Configuration Class</b>	<b>Pre-compile time</b>	X	VARIANT-PRE-COMPILE
	<b>Link time</b>	X	VARIANT-LINK-TIME
	<b>Post-build time</b>	X	VARIANT-POST-BUILD
<b>Scope / Dependency</b>	scope: local		

<b>SWS Item</b>	<b>ECUC_J1939Nm_00044 :</b>		
<b>Name</b>	J1939NmExternalNodeNameFunctionInstance		
<b>Parent Container</b>	J1939NmExternalNode		
<b>Description</b>	Function Instance field of the NAME of this external node.		
<b>Multiplicity</b>	1		
<b>Type</b>	EcucIntegerParamDef		
<b>Range</b>	0 .. 31		
<b>Default value</b>	--		
<b>Post-Build Variant Value</b>	true		
<b>Value Configuration Class</b>	<b>Pre-compile time</b>	X	VARIANT-PRE-COMPILE
	<b>Link time</b>	X	VARIANT-LINK-TIME
	<b>Post-build time</b>	X	VARIANT-POST-BUILD
<b>Scope / Dependency</b>	scope: local		

<b>SWS Item</b>	<b>ECUC_J1939Nm_00045 :</b>		
<b>Name</b>	J1939NmExternalNodeNameIdentityNumber		
<b>Parent Container</b>	J1939NmExternalNode		
<b>Description</b>	Identity Number field of the NAME of this external node.		
<b>Multiplicity</b>	1		
<b>Type</b>	EcucIntegerParamDef		
<b>Range</b>	0 .. 2097151		
<b>Default value</b>	--		
<b>Post-Build Variant Value</b>	true		
<b>Value Configuration Class</b>	<b>Pre-compile time</b>	X	VARIANT-PRE-COMPILE
	<b>Link time</b>	X	VARIANT-LINK-TIME
	<b>Post-build time</b>	X	VARIANT-POST-BUILD
<b>Scope / Dependency</b>	scope: local		

<b>SWS Item</b>	<b>ECUC_J1939Nm_00046 :</b>		
<b>Name</b>	J1939NmExternalNodeNameIndustryGroup		
<b>Parent Container</b>	J1939NmExternalNode		
<b>Description</b>	Industry Group field of the NAME of this external node.		
<b>Multiplicity</b>	1		
<b>Type</b>	EcucIntegerParamDef		
<b>Range</b>	0 .. 7		
<b>Default value</b>	--		
<b>Post-Build Variant Value</b>	true		
<b>Value Configuration Class</b>	<b>Pre-compile time</b>	X	VARIANT-PRE-COMPILE
	<b>Link time</b>	X	VARIANT-LINK-TIME
	<b>Post-build time</b>	X	VARIANT-POST-BUILD
<b>Scope / Dependency</b>	scope: local		

<b>SWS Item</b>	<b>ECUC_J1939Nm_00047 :</b>		
<b>Name</b>	J1939NmExternalNodeNameManufacturerCode		
<b>Parent Container</b>	J1939NmExternalNode		
<b>Description</b>	Manufacturer Code field of the NAME of this external node.		
<b>Multiplicity</b>	1		
<b>Type</b>	EcucIntegerParamDef		
<b>Range</b>	0 .. 2047		
<b>Default value</b>	--		
<b>Post-Build Variant Value</b>	true		
<b>Value Configuration Class</b>	<b>Pre-compile time</b>	X	VARIANT-PRE-COMPILE
	<b>Link time</b>	X	VARIANT-LINK-TIME
	<b>Post-build time</b>	X	VARIANT-POST-BUILD
<b>Scope / Dependency</b>	scope: local		

<b>SWS Item</b>	<b>ECUC_J1939Nm_00048 :</b>		
<b>Name</b>	J1939NmExternalNodeNameVehicleSystem		
<b>Parent Container</b>	J1939NmExternalNode		
<b>Description</b>	Vehicle System field of the NAME of this external node.		
<b>Multiplicity</b>	1		
<b>Type</b>	EcucIntegerParamDef		
<b>Range</b>	0 .. 127		
<b>Default value</b>	--		
<b>Post-Build Variant Value</b>	true		
<b>Value Configuration Class</b>	<b>Pre-compile time</b>	X	VARIANT-PRE-COMPILE
	<b>Link time</b>	X	VARIANT-LINK-TIME
	<b>Post-build time</b>	X	VARIANT-POST-BUILD
<b>Scope / Dependency</b>	scope: local		

<b>SWS Item</b>	<b>ECUC_J1939Nm_00050 :</b>		
<b>Name</b>	J1939NmExternalNodeNameVehicleSystemInstance		
<b>Parent Container</b>	J1939NmExternalNode		
<b>Description</b>	Vehicle System Instance field of the NAME of this external node.		
<b>Multiplicity</b>	1		
<b>Type</b>	EcucIntegerParamDef		
<b>Range</b>	0 .. 15		
<b>Default value</b>	--		
<b>Post-Build Variant Value</b>	true		
<b>Value Configuration Class</b>	<b>Pre-compile time</b>	X	VARIANT-PRE-COMPILE
	<b>Link time</b>	X	VARIANT-LINK-TIME
	<b>Post-build time</b>	X	VARIANT-POST-BUILD
<b>Scope / Dependency</b>	scope: local		

<b>SWS Item</b>	<b>ECUC_J1939Nm_00049 :</b>		
<b>Name</b>	J1939NmExternalNodePreferredAddress		
<b>Parent Container</b>	J1939NmExternalNode		
<b>Description</b>	Source address of this external node.		
<b>Multiplicity</b>	1		
<b>Type</b>	EcucIntegerParamDef		
<b>Range</b>	0 .. 253		
<b>Default value</b>	--		
<b>Post-Build Variant Value</b>	true		
<b>Value Configuration Class</b>	<b>Pre-compile time</b>	X	VARIANT-PRE-COMPILE
	<b>Link time</b>	X	VARIANT-LINK-TIME
	<b>Post-build time</b>	X	VARIANT-POST-BUILD
<b>Scope / Dependency</b>	scope: ECU		

<b>SWS Item</b>	<b>ECUC_J1939Nm_00051 :</b>		
<b>Name</b>	J1939NmExternalNodeChannelRef		
<b>Parent Container</b>	J1939NmExternalNode		
<b>Description</b>	Reference to the channels of the local ECU this external node has access to.		
<b>Multiplicity</b>	1..*		
<b>Type</b>	Reference to [ J1939NmChannel ]		
<b>Post-Build Variant Multiplicity</b>	true		
<b>Post-Build Variant Value</b>	true		
<b>Multiplicity Configuration Class</b>	<b>Pre-compile time</b>	X	VARIANT-PRE-COMPILE
	<b>Link time</b>	X	VARIANT-LINK-TIME
	<b>Post-build time</b>	X	VARIANT-POST-BUILD
<b>Value Configuration Class</b>	<b>Pre-compile time</b>	X	VARIANT-PRE-COMPILE
	<b>Link time</b>	X	VARIANT-LINK-TIME
	<b>Post-build time</b>	X	VARIANT-POST-BUILD
<b>Scope / Dependency</b>	scope: local		

<b>SWS Item</b>	<b>ECUC_J1939Nm_00052 :</b>		
<b>Name</b>	J1939NmExternalNodeGatewayedChannelRef		
<b>Parent Container</b>	J1939NmExternalNode		
<b>Description</b>	Reference to the channels on which messages to/from this external node shall be gatewayed. The address claim from the external node will be replicated on these channels.		
<b>Multiplicity</b>	0..*		
<b>Type</b>	Reference to [ J1939NmChannel ]		
<b>Post-Build Variant Multiplicity</b>	true		
<b>Post-Build Variant Value</b>	true		
<b>Multiplicity Configuration Class</b>	<b>Pre-compile time</b>	X	VARIANT-PRE-COMPILE
	<b>Link time</b>	X	VARIANT-LINK-TIME
	<b>Post-build time</b>	X	VARIANT-POST-BUILD
<b>Value Configuration Class</b>	<b>Pre-compile time</b>	X	VARIANT-PRE-COMPILE
	<b>Link time</b>	X	VARIANT-LINK-TIME
	<b>Post-build time</b>	X	VARIANT-POST-BUILD
<b>Scope / Dependency</b>	scope: local		

**No Included Containers**

## 10.2 Configuration of NM Interface

The J1939 Network Management module relies on the following channel configuration in the NM Interface to be operational:

- NmActiveCoordinator: False
- NmBusSynchronizationEnabled: False
- NmChannelSleepMaster: True
- NmComControlEnabled: False
- NmCoordClusterIndex: <undefined>
- NmCoordinatorSyncSupport: False
- NmNodeDetectionEnabled: False

- NmNodeIdEnabled: False
- NmPassiveModeEnabled: False
- NmRemoteSleepIndEnabled: False
- NmShutdownDelayTimer: 0.0
- NmStateReportEnabled: False
- NmStateReportSignalRef: <undefined>
- NmSynchronizingNetwork: False
- NmUserDataEnabled: False

### **10.3 Published Information**

For details, refer to the chapter 10.3 “Published Information” in the SWS BSW General [4].