

Document Title	Specification of Development Error Tracer
Document Owner	AUTOSAR
Document Responsibility	AUTOSAR
Document Identification No	017
Document Classification	Standard
Document Version	3.4.1
Document Status	Final
Part of Release	4.1
Revision	3

Document Change History			
Date	Version	Changed by	Change Description
31.03.2014	3.4.1	AUTOSAR Release Management	<ul style="list-style-type: none">Improved requirement format of SWS_DET_00050
31.10.2013	3.4.0	AUTOSAR Release Management	<ul style="list-style-type: none">Structural but non-functional improvements in document structure and creationEditorial changesRemoved chapter(s) on change documentation
27.02.2013	3.3.0	AUTOSAR Administration	<ul style="list-style-type: none">Harmonized requirements according to SWS_GeneralFormalized service descriptions
30.09.2011	3.2.0	AUTOSAR Administration	<ul style="list-style-type: none">Clarifications related to include structure etc.
18.10.2010	3.1.0	AUTOSAR Administration	<ul style="list-style-type: none">DLT is now an optional interface of DETHarmonized parameter error handlingRemoved known limitation of Revision 4.0.1
30.11.2009	3.0.0	AUTOSAR Administration	<ul style="list-style-type: none">Changed Tracing to requirements now located in SRS_DebuggingAdded a Std_ReturnType value to Det_ReportErrorHarmonized configuration classesAdopted to the changed general requirementsLegal disclaimer revisedChapter 10.3 revised
23.06.2008	2.2.1	AUTOSAR Administration	Legal disclaimer revised

Document Change History			
Date	Version	Changed by	Change Description
12.12.2007	2.2.0	AUTOSAR Administration	<ul style="list-style-type: none">• Added API GetVersionInfo to harmonize SWS with AUTOSAR conventions• Document meta information extended• Small layout adaptations made
25.01.2007	2.1.0	AUTOSAR Administration	<ul style="list-style-type: none">• Added SRS_BSW_00436 to traceability matrix• Added Memmap.h• Added Chapter 11• Legal disclaimer revised• “Advice for users” revised• “Revision Information” added
17.05.2006	2.0.0	AUTOSAR Administration	Changed to new SWS template
08.07.2005	1.0.0	AUTOSAR Administration	Initial Release

Disclaimer

This specification and the material contained in it, as released by AUTOSAR, is for the purpose of information only. AUTOSAR and the companies that have contributed to it shall not be liable for any use of the specification.

The material contained in this specification is protected by copyright and other types of Intellectual Property Rights. The commercial exploitation of the material contained in this specification requires a license to such Intellectual Property Rights.

This specification may be utilized or reproduced without any modification, in any form or by any means, for informational purposes only.

For any other purpose, no part of the specification may be utilized or reproduced, in any form or by any means, without permission in writing from the publisher.

The AUTOSAR specifications have been developed for automotive applications only. They have neither been developed, nor tested for non-automotive applications.

The word AUTOSAR and the AUTOSAR logo are registered trademarks.

Advice for users

AUTOSAR specifications may contain exemplary items (exemplary reference models, "use cases", and/or references to exemplary technical solutions, devices, processes or software).

Any such exemplary items are contained in the specifications for illustration purposes only, and they themselves are not part of the AUTOSAR Standard. Neither their presence in such specifications, nor any later documentation of AUTOSAR conformance of products actually implementing such exemplary items, imply that intellectual property rights covering such exemplary items are licensed under the same rules as applicable to the AUTOSAR Standard.

Table of Contents

1	Introduction and functional overview	6
2	Acronyms and abbreviations	7
3	Related documentation.....	8
3.1	Input documents.....	8
3.2	Related standards and norms	8
3.3	Related specification	8
4	Constraints and assumptions	9
4.1	Limitations	9
4.2	Applicability to car domains	9
5	Dependencies to other modules.....	10
5.1	File structure.....	10
6	Requirements traceability	12
6.1	Basic Software Requirements	18
6.2	Diagnostic Requirements	25
7	Functional specification	27
7.1	Initialization.....	27
7.2	Error Hooks	28
7.3	Error Reporting.....	28
7.4	Version Information	29
7.5	Error classification	29
7.6	Error detection.....	29
7.7	Error notification	30
8	API specification.....	31
8.1	API.....	31
8.1.1	Imported types	31
8.1.2	Type definitions.....	31
8.1.3	Function definitions.....	31
8.1.3.1	Det_Init.....	31
8.1.3.2	Det_ReportError	31
8.1.3.3	Det_Start	32
8.1.3.4	Det_GetVersionInfo.....	32
8.1.4	Expected Interfaces	33
8.1.4.1	Mandatory Interfaces.....	33
8.1.4.2	Optional Interfaces	34
8.2	Service Interfaces.....	34
8.2.1	Scope of this Chapter	34
8.2.2	Overview.....	34
8.2.2.1	Use Case.....	34
8.2.3	Specification of the Ports and Port Interfaces	35
8.2.3.1	General Approach	35
8.2.3.2	Data Types	35
8.2.3.3	Port Interface.....	35

8.2.4	Definition of the Service	37
8.2.5	Configuration of the DET	38
9	Sequence diagrams	39
9.1	Initialization.....	39
9.2	Error reporting	39
10	Configuration specification.....	41
10.1	Variants	41
10.2	Containers and configuration parameters	41
10.2.1	Det	43
10.2.2	DetGeneral	44
10.2.3	DetNotification	44
10.2.4	DetConfigSet	45
10.3	Published Information.....	45
11	Not applicable requirements	46

1 Introduction and functional overview

This specification describes the API of the Development Error Tracer. All detected development errors in the Basic Software are reported to this module. The API parameters allow for tracing source and kind of error:

- Module in which error has been detected
- Function in which error has been detected
- Type of error

The functionality behind the API of this module is not in scope of this specification. It is up to the software developer and software integrator to choose the optimal strategy for his specific application and testing environment. Possible functionalities could be:

- Set debugger breakpoint within error reporting API
- Count reported errors
- Log calls and passed parameters in RAM buffer
- Send reported errors via communication interface to external logger

Note: The software requirements of the Development Error Tracer are specified in the SRS Diagnostics document.

2 Acronyms and abbreviations

DET: Development Error Tracer.

3 Related documentation

3.1 Input documents

- [1] List of Basic Software Modules,
AUTOSAR_TR_BSWModuleList.pdf
- [2] Layered Software Architecture,
AUTOSAR_EXP_LayeredSoftwareArchitecture.pdf
- [3] General Requirements on Basic Software Modules,
AUTOSAR_SRS_BSWGeneral.pdf
- [4] Basic Software Module Description Template,
AUTOSAR_TPS_BSWModuleDescriptionTemplate.pdf
- [5] Specification of ECU Configuration,
AUTOSAR_TPS_ECUConfiguration.pdf
- [6] Requirements on Diagnostic
AUTOSAR_SRS_Diagnostic.pdf
- [7] General Specification of Basic Software Modules
AUTOSAR_SWS_BSWGeneral.pdf

3.2 Related standards and norms

Not applicable.

3.3 Related specification

AUTOSAR provides a General Specification on Basic Software modules [7] (SWS BSW General), which is also valid for Development Error Tracer.

Thus, the specification SWS BSW General shall be considered as additional and required specification for Development Error Tracer.

4 Constraints and assumptions

4.1 Limitations

This specification does not define the functionality behind the error reporting API.

Memory protection mechanisms of the operating system are not taken into account. It is assumed that the whole Basic Software runs in supervisor mode or the switch to supervisor mode is done by a system call within the error reporting function of the DET module.

4.2 Applicability to car domains

No restrictions.

5 Dependencies to other modules

5.1 File structure

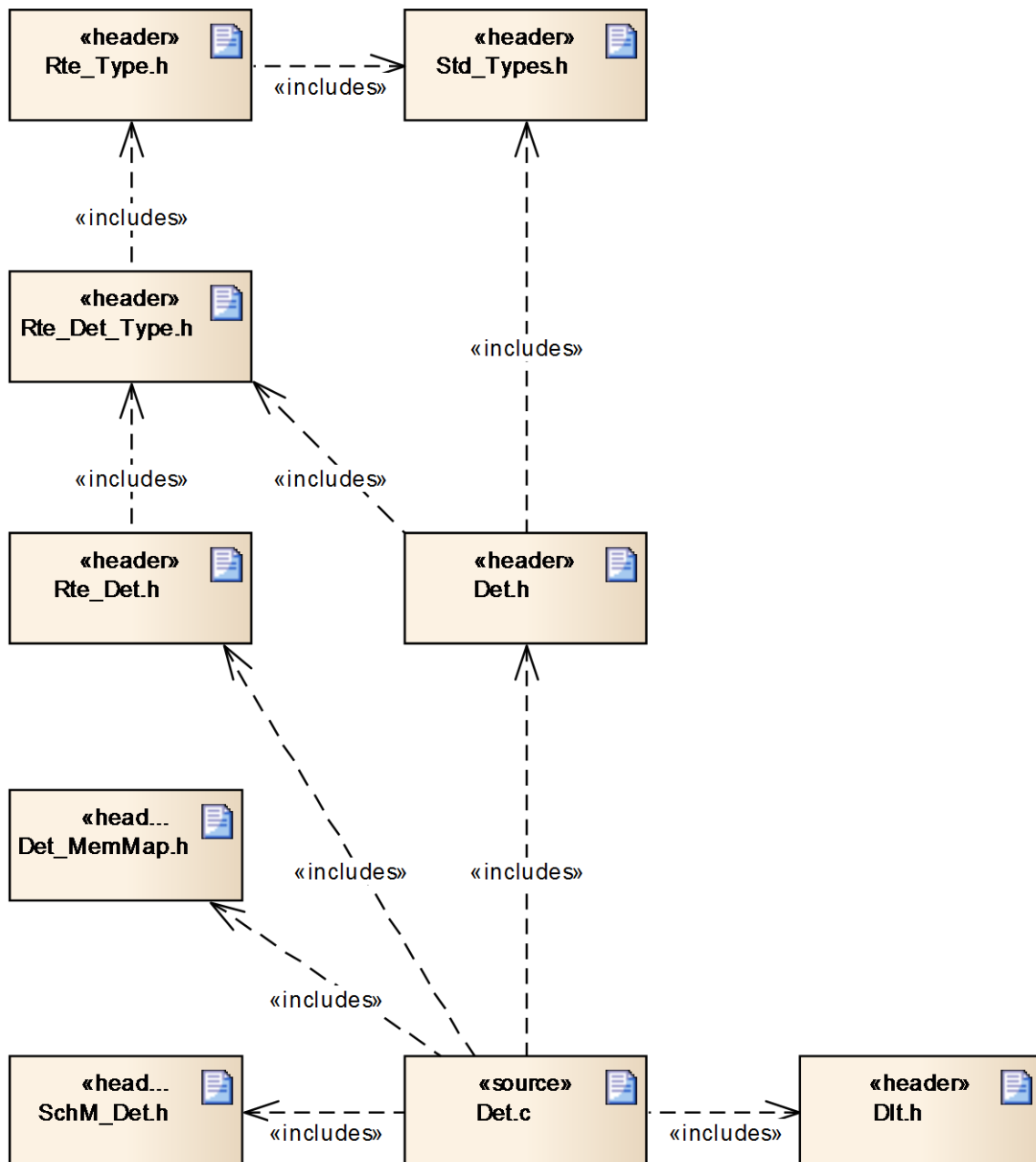


Figure 1: DET Header Structure

[SWS_Det_00004] 「The Development Error Tracer module's source code shall offer a header file Det.h, see Figure 1.」(SRS_BSW_00300, SRS_BSW_00302, SRS_BSW_00321)

[SWS_Det_00037] 「Det.h includes all user relevant information for the tracing of development errors.」()

[SWS_Det_00042] 「The DET may include the header file Dlt.h」()

6 Requirements traceability

Requirement	Description	Satisfied by
-	-	SWS_Det_00014
-	-	SWS_Det_00015
-	-	SWS_Det_00017
-	-	SWS_Det_00018
-	-	SWS_Det_00020
-	-	SWS_Det_00023
-	-	SWS_Det_00024
-	-	SWS_Det_00025
-	-	SWS_Det_00026
-	-	SWS_Det_00039
-	-	SWS_Det_00041
-	-	SWS_Det_00052
-	-	SWS_Det_00101
BSW00101	-	SWS_Det_00019
BSW00324	-	SWS_Det_00999
BSW00420	-	SWS_Det_00999
BSW00421	-	SWS_Det_00999
BSW00431	-	SWS_Det_00999
BSW00434	-	SWS_Det_00999
SRS_BSW_00004	All Basic SW Modules shall perform a pre-processor check of the versions of all imported include files	SWS_Det_00999
SRS_BSW_00005	Modules of the æC Abstraction Layer (MCAL) may not have hard coded horizontal interfaces	SWS_Det_00999
SRS_BSW_00006	The source code of software modules above the æC Abstraction Layer (MCAL) shall not be processor and compiler dependent.	SWS_Det_00999
SRS_BSW_00007	All Basic SW Modules written in C language shall conform to the MISRA C 2004 Standard.	SWS_Det_00999
SRS_BSW_00009	All Basic SW Modules shall be documented according to a common standard.	SWS_Det_00999
SRS_BSW_00010	The memory consumption of all Basic SW Modules shall be documented for a defined configuration for all supported platforms.	SWS_Det_00999
SRS_BSW_00158	All modules of the AUTOSAR Basic Software shall strictly separate configuration from implementation	SWS_Det_00999

SRS_BSW_00159	All modules of the AUTOSAR Basic Software shall support a tool based configuration	SWS_Det_00999
SRS_BSW_00160	Configuration files of AUTOSAR Basic SW module shall be readable for human beings	SWS_Det_00999
SRS_BSW_00161	The AUTOSAR Basic Software shall provide a microcontroller abstraction layer which provides a standardized interface to higher software layers	SWS_Det_00999
SRS_BSW_00162	The AUTOSAR Basic Software shall provide a hardware abstraction layer	SWS_Det_00999
SRS_BSW_00164	The Implementation of interrupt service routines shall be done by the Operating System, complex drivers or modules	SWS_Det_00999
SRS_BSW_00167	All AUTOSAR Basic Software Modules shall provide configuration rules and constraints to enable plausibility checks	SWS_Det_00999
SRS_BSW_00168	SW components shall be tested by a function defined in a common API in the Basis-SW	SWS_Det_00999
SRS_BSW_00170	The AUTOSAR SW Components shall provide information about their dependency from faults, signal qualities, driver demands	SWS_Det_00999
SRS_BSW_00172	The scheduling strategy that is built inside the Basic Software Modules shall be compatible with the strategy used in the system	SWS_Det_00999
SRS_BSW_00300	All AUTOSAR Basic Software Modules shall be identified by an unambiguous name	SWS_Det_00004
SRS_BSW_00301	All AUTOSAR Basic Software Modules shall only import the necessary information	SWS_Det_00999
SRS_BSW_00302	All AUTOSAR Basic Software Modules shall only export information needed by other modules	SWS_Det_00004
SRS_BSW_00304	-	SWS_Det_00999
SRS_BSW_00305	Data types naming convention	SWS_Det_00999
SRS_BSW_00306	AUTOSAR Basic Software Modules shall be compiler and platform independent	SWS_Det_00999
SRS_BSW_00307	Global variables naming convention	SWS_Det_00999
SRS_BSW_00308	AUTOSAR Basic Software Modules shall not define global data in their header files, but in the C file	SWS_Det_00999
SRS_BSW_00309	All AUTOSAR Basic Software Modules shall indicate all global data with read-only purposes by explicitly assigning the const keyword	SWS_Det_00999
SRS_BSW_00310	API naming convention	SWS_Det_00008, SWS_Det_00009, SWS_Det_00010, SWS_Det_00011
SRS_BSW_00312	Shared code shall be reentrant	SWS_Det_00999

SRS_BSW_00314	All internal driver modules shall separate the interrupt frame definition from the service routine	SWS_Det_00999
SRS_BSW_00318	Each AUTOSAR Basic Software Module file shall provide version numbers in the header file	SWS_Det_00011
SRS_BSW_00321	The version numbers of AUTOSAR Basic Software Modules shall be enumerated according specific rules	SWS_Det_00004
SRS_BSW_00323	All AUTOSAR Basic Software Modules shall check passed API parameters for validity	SWS_Det_00999
SRS_BSW_00325	The runtime of interrupt service routines and functions that are running in interrupt context shall be kept short	SWS_Det_00999
SRS_BSW_00326	-	SWS_Det_00999
SRS_BSW_00328	All AUTOSAR Basic Software Modules shall avoid the duplication of code	SWS_Det_00999
SRS_BSW_00329	-	SWS_Det_00999
SRS_BSW_00330	It shall be allowed to use macros instead of functions where source code is used and runtime is critical	SWS_Det_00999
SRS_BSW_00331	All Basic Software Modules shall strictly separate error and status information	SWS_Det_00999
SRS_BSW_00333	For each callback function it shall be specified if it is called from interrupt context or not	SWS_Det_00999
SRS_BSW_00334	All Basic Software Modules shall provide an XML file that contains the meta data	SWS_Det_00999
SRS_BSW_00335	Status values naming convention	SWS_Det_00999
SRS_BSW_00336	Basic SW module shall be able to shutdown	SWS_Det_00999
SRS_BSW_00337	Classification of development errors	SWS_Det_00999
SRS_BSW_00338	-	SWS_Det_00999
SRS_BSW_00339	Reporting of production relevant error status	SWS_Det_00999
SRS_BSW_00341	Module documentation shall contains all needed informations	SWS_Det_00999
SRS_BSW_00342	It shall be possible to create an AUTOSAR ECU out of modules provided as source code and modules provided as object code, even mixed	SWS_Det_00999
SRS_BSW_00343	The unit of time for specification and configuration of Basic SW modules shall be preferably in physical time unit	SWS_Det_00999
SRS_BSW_00344	BSW Modules shall support link-time configuration	SWS_Det_00999
SRS_BSW_00345	BSW Modules shall support pre-compile configuration	SWS_Det_00999
SRS_BSW_00346	All AUTOSAR Basic Software Modules shall provide at least a basic set of module files	SWS_Det_00999

SRS_BSW_00347	A Naming separation of different instances of BSW drivers shall be in place	SWS_Det_00999
SRS_BSW_00348	All AUTOSAR standard types and constants shall be placed and organized in a standard type header file	SWS_Det_00999
SRS_BSW_00350	All AUTOSAR Basic Software Modules shall apply a specific naming rule for enabling/disabling the detection and reporting of development errors	SWS_Det_00999
SRS_BSW_00353	All integer type definitions of target and compiler specific scope shall be placed and organized in a single type header	SWS_Det_00999
SRS_BSW_00355	-	SWS_Det_00999
SRS_BSW_00357	For success/failure of an API call a standard return type shall be defined	SWS_Det_00999
SRS_BSW_00358	The return type of init() functions implemented by AUTOSAR Basic Software Modules shall be void	SWS_Det_00008
SRS_BSW_00359	All AUTOSAR Basic Software Modules callback functions shall avoid return types other than void if possible	SWS_Det_00999
SRS_BSW_00360	AUTOSAR Basic Software Modules callback functions are allowed to have parameters	SWS_Det_00999
SRS_BSW_00361	All mappings of not standardized keywords of compiler specific scope shall be placed and organized in a compiler specific type and keyword header	SWS_Det_00999
SRS_BSW_00369	All AUTOSAR Basic Software Modules shall not return specific development error codes via the API	SWS_Det_00051, SWS_Det_00999
SRS_BSW_00370	-	SWS_Det_00999
SRS_BSW_00371	The passing of function pointers as API parameter is forbidden for all AUTOSAR Basic Software Modules	SWS_Det_00999
SRS_BSW_00373	The main processing function of each AUTOSAR Basic Software Module shall be named according the defined convention	SWS_Det_00999
SRS_BSW_00375	Basic Software Modules shall report wake-up reasons	SWS_Det_00999
SRS_BSW_00376	-	SWS_Det_00999
SRS_BSW_00377	A Basic Software Module can return a module specific types	SWS_Det_00999
SRS_BSW_00378	AUTOSAR shall provide a boolean type	SWS_Det_00999
SRS_BSW_00379	All software modules shall provide a module identifier in the header file and in the module XML description file.	SWS_Det_00999
SRS_BSW_00380	Configuration parameters being stored in memory shall be placed into separate c-files	SWS_Det_00999

SRS_BSW_00381	The pre-compile time parameters shall be placed into a separate configuration header file	SWS_Det_00999
SRS_BSW_00383	The Basic Software Module specifications shall specify which other configuration files from other modules they use at least in the description	SWS_Det_00999
SRS_BSW_00385	List possible error notifications	SWS_Det_00999
SRS_BSW_00386	The BSW shall specify the configuration for detecting an error	SWS_Det_00999
SRS_BSW_00387	The Basic Software Module specifications shall specify how the callback function is to be implemented	SWS_Det_00999
SRS_BSW_00388	Containers shall be used to group configuration parameters that are defined for the same object	SWS_Det_00999
SRS_BSW_00389	Containers shall have names	SWS_Det_00999
SRS_BSW_00390	Parameter content shall be unique within the module	SWS_Det_00999
SRS_BSW_00391	-	SWS_Det_00999
SRS_BSW_00392	Parameters shall have a type	SWS_Det_00999
SRS_BSW_00393	Parameters shall have a range	SWS_Det_00999
SRS_BSW_00394	The Basic Software Module specifications shall specify the scope of the configuration parameters	SWS_Det_00999
SRS_BSW_00395	The Basic Software Module specifications shall list all configuration parameter dependencies	SWS_Det_00999
SRS_BSW_00396	The Basic Software Module specifications shall specify one classe (of the three) to be supported	SWS_Det_00999
SRS_BSW_00397	The configuration parameters in pre-compile time are fixed before compilation starts	SWS_Det_00999
SRS_BSW_00398	The link-time configuration is achieved on object code basis in the stage after compiling and before linking	SWS_Det_00999
SRS_BSW_00399	Parameter-sets shall be located in a separate segment and shall be loaded after the code	SWS_Det_00999
SRS_BSW_00400	Parameter shall be selected from multiple sets of parameters after code has been loaded and started	SWS_Det_00999
SRS_BSW_00401	Documentation of multiple instances of configuration parameters shall be available	SWS_Det_00999
SRS_BSW_00404	BSW Modules shall support post-build configuration	SWS_Det_00999
SRS_BSW_00405	BSW Modules shall support multiple configuration sets	SWS_Det_00999

SRS_BSW_00406	A static status variable denoting if a BSW module is initialized shall be initialized with value 0 before any APIs of the BSW module is called	SWS_Det_00999
SRS_BSW_00407	Each BSW module shall provide a function to read out the version information of a dedicated module implementation	SWS_Det_00999
SRS_BSW_00409	All production code error ID symbols are defined by the Dem module and shall be retrieved by the other BSW modules from Dem configuration	SWS_Det_00999
SRS_BSW_00410	Compiler switches shall have defined values	SWS_Det_00999
SRS_BSW_00412	References to c-configuration parameters shall be placed into a separate h-file	SWS_Det_00999
SRS_BSW_00413	An index-based accessing of the instances of BSW modules shall be done	SWS_Det_00999
SRS_BSW_00414	The init function may have parameters	SWS_Det_00008
SRS_BSW_00415	Interfaces which are provided exclusively for one module shall be separated into a dedicated header file	SWS_Det_00999
SRS_BSW_00416	The sequence of modules to be initialized shall be configurable	SWS_Det_00999
SRS_BSW_00417	Software which is not part of the SW-C shall report error events only after the DEM is fully operational.	SWS_Det_00999
SRS_BSW_00419	If a pre-compile time configuration parameter is implemented as "const" it should be placed into a separate c-file	SWS_Det_00999
SRS_BSW_00422	Pre-de-bouncing of error status information is done within the DEM	SWS_Det_00999
SRS_BSW_00423	BSW modules with AUTOSAR interfaces shall be describable with the means of the SW-C Template	SWS_Det_00999
SRS_BSW_00424	BSW module main processing functions shall not be allowed to enter a wait state	SWS_Det_00999
SRS_BSW_00425	The BSW module description template shall provide means to model the defined trigger conditions of schedulable objects	SWS_Det_00999
SRS_BSW_00426	BSW Modules shall ensure data consistency of data which is shared between BSW modules	SWS_Det_00999
SRS_BSW_00427	ISR functions shall be defined and documented in the BSW module description template	SWS_Det_00999
SRS_BSW_00428	A BSW module shall state if its main processing function(s) has to be executed in a specific order or sequence	SWS_Det_00999
SRS_BSW_00429	BSW modules shall be only allowed to use OS objects and/or related OS services	SWS_Det_00999

SRS_BSW_00432	Modules should have separate main processing functions for read/receive and write/transmit data path	SWS_Det_00999
SRS_BSW_00433	Main processing functions are only allowed to be called from task bodies provided by the BSW Scheduler	SWS_Det_00999
SRS_BSW_00437	Memory mapping shall provide the possibility to define RAM segments which are not to be initialized during startup	SWS_Det_00999
SRS_BSW_00438	Configuration data shall be defined in a structure	SWS_Det_00999
SRS_BSW_00439	Enable BSW modules to handle interrupts	SWS_Det_00999
SRS_BSW_00440	The callback function invocation by the BSW module shall follow the signature provided by RTE to invoke servers via Rte_Call API	SWS_Det_00999
SRS_BSW_00441	Naming convention for type, macro and function	SWS_Det_00999
SRS_Diag_04085	The Development Error Tracer shall provide an interface to receive error reports	SWS_Det_00009
SRS_Diag_04086	Report errors shall contain a dedicated set of information	SWS_Det_00009
SRS_Diag_04087	The Development Error Tracer shall provide a development error report reception service	SWS_Det_00200, SWS_Det_00202, SWS_Det_00203, SWS_Det_00204, SWS_Det_00205, SWS_Det_00206
SRS_Diag_04089	Fan-out of received error reports	SWS_Det_00050, SWS_Det_00207
SRS_Diag_04090	-	SWS_Det_00027, SWS_Det_00050
SRS_Diag_04101	The DET module shall forward its trace events to the DLT	SWS_Det_00034

The following table lists the general basic software requirements and its related SWS requirements in the document. The specific requirements for DET are part of the diagnose mechanism and therefore part of the SRS-Diagnostic (Chapter 5.1.5 in [6]).

6.1 Basic Software Requirements

Requirement	Satisfied by
[SRS_BSW_00300] Module naming convention [approved]	SWS_Det_00004
[SRS_BSW_00301] Limit imported information [approved]	Not applicable (this is a development support module, no included files)
[SRS_BSW_00302] Limit exported information [approved]	SWS_Det_00004
[SRS_BSW_00304] AUTOSAR integer data types [approved]	Not applicable (Not used in this module)
[SRS_BSW_00305] Self-defined data types naming convention [approved]	Not applicable (Not used in this module)
[SRS_BSW_00306] Avoid direct use of compiler and platform specific keywords [approved]	Not applicable (Not used in this module)
[SRS_BSW_00307] Global variables naming	Not applicable

convention [approved]	(Not used in this module)
[SRS_BSW_00308] Definition of global data [approved]	Not applicable (Not used in this module)
[SRS_BSW_00309] Global data with read-only constraint [approved]	Not applicable (Not used in this module)
[SRS_BSW_00310] API naming convention [approved]	SWS_Det_00008 SWS_Det_00009 SWS_Det_00010 SWS_Det_00011
[SRS_BSW_00312] Shared code shall be reentrant [approved]	Not applicable (Not used in this module)
[SRS_BSW_00439] Declaration of interrupt handlers and ISRs	Not applicable (Not used in this module)
[SRS_BSW_00314] Separation of interrupt frames and service routines [approved]	Not applicable (Not used in this module)
[SRS_BSW_00318] Format of module version numbers [approved]	SWS_Det_00011 SWS_Det_00012
[SRS_BSW_00321] Enumeration of module version numbers [approved]	SWS_Det_00004
[BSW00324] Do not use HIS I/O Library [approved]	Not applicable (Not used in this module)
[SRS_BSW_00325] Runtime of interrupt service routines [approved]	Not applicable (Not used in this module)
[SRS_BSW_00326] Transition from ISRs to OS tasks [approved]	Not applicable (Not used in this module)
[SRS_BSW_00327] Error values naming convention [approved]	See Chapter 7.5
[SRS_BSW_00328] Avoid duplication of code [approved]	Not applicable (Not used in this module)
[SRS_BSW_00329] Avoidance of generic interfaces [approved]	Not applicable (Not used in this module)
[SRS_BSW_00330] Usage of macros / inline functions instead of functions [approved]	Not applicable (Not used in this module)
[SRS_BSW_00331] Separation of error and status values [approved]	Not applicable (Not used in this module)
[SRS_BSW_00333] Documentation of callback function context [approved]	Not applicable (Not used in this module)

[SRS_BSW_00334] Provision of XML file [approved]	Not applicable (Not used in this module)
[SRS_BSW_00335] Status values naming convention [approved]	Not applicable (Not used in this module)
[SRS_BSW_00341] Microcontroller compatibility documentation [approved]	Not applicable (Not used in this module)
[SRS_BSW_00342] Usage of source code and object code [approved]	Not applicable (Not used in this module)
[SRS_BSW_00343] Specification and configuration of time [approved]	Not applicable (Not used in this module)
[SRS_BSW_00341] Microcontroller compatibility documentation [approved]	Not applicable (Not used in this module)
[SRS_BSW_00346] Basic set of module files [approved]	Not applicable (Not used in this module)
[SRS_BSW_00347] Naming separation of different instances of BSW drivers [approved]	Not applicable (Not used in this module)
[SRS_BSW_00441] Enumeration literals and #define naming convention	Not applicable (Not used in this module)
[SRS_BSW_00350] Development error detection keyword [approved]	Not applicable (Not used in this module)
[SRS_BSW_00353] Platform specific type header [approved]	Not applicable (Not used in this module)
[SRS_BSW_00355] Do not redefine AUTOSAR integer data types [approved]	Not applicable (Not used in this module)
[SRS_BSW_00350] Development error detection keyword [approved]	Not applicable (Not used in this module)
[SRS_BSW_00358] Return type of init() functions [approved]	SWS_Det_00008
[SRS_BSW_00359] Return type of callback functions [approved]	Not applicable (Not used in this module)
[SRS_BSW_00360] Parameters of callback functions [approved]	Not applicable (Not used in this module)
[SRS_BSW_00440] Function prototype for callback functions of AUTOSAR Services	Not applicable (Not used in this module)
[SRS_BSW_00361] Compiler specific language extension header [approved]	Not applicable (Not used in this module)
[SRS_BSW_00370] Separation of callback interface from API [approved]	Not applicable (Not used in this module)
[SRS_BSW_00371] Do not pass function pointers via API [approved]	Not applicable (Not used in this module)
[SRS_BSW_00373] Main processing function naming convention [approved]	Not applicable (Not used in this module)
[SRS_BSW_00374] Module vendor identification [approved]	SWS_Det_00012
[SRS_BSW_00376] Return type and parameters of main processing functions [approved]	Not applicable (Not used in this module)
[SRS_BSW_00377] Module specific API return types [approved]	Not applicable (Not used in this module)
[SRS_BSW_00378] AUTOSAR boolean type [approved]	Not applicable (Not used in this module)
[SRS_BSW_00379] Module identification [approved]	Not applicable (Not used in this module)
[SRS_BSW_00401] Documentation of multiple instances of configuration parameters [approved]	Not applicable (Not used in this module)
[SRS_BSW_00408] Configuration parameter naming convention [approved]	See Chapter 10.
[SRS_BSW_00410] Compiler switches shall have defined values [approved]	Not applicable (Not used in this module)
[SRS_BSW_00411] Get version info keyword	SWS_Det_00028

[approved]	
[SRS_BSW_00413] Accessing instances of BSW modules [approved]	Not applicable (Not used in this module)
[SRS_BSW_00414] Parameter of init function [approved]	SWS_Det_00008
[SRS_BSW_00415] User dependent include files [approved]	Not applicable (Not used in this module)
[SRS_BSW_00005] No hard coded horizontal interfaces within MCAL [approved]	Not applicable (Not used in this module)
[SRS_BSW_00006] Platform independency [approved]	Not applicable (Not used in this module)
[SRS_BSW_00007] HIS MISRA C [approved]	Not applicable (Not used in this module)
[SRS_BSW_00009] Module User Documentation [approved]	Not applicable (Not used in this module)
[SRS_BSW_00010] Memory resource documentation [approved]	Not applicable (Not used in this module)
[SRS_BSW_00158] Separation of configuration from implementation [approved]	Not applicable (Not used in this module)
[SRS_BSW_00160] Human-readable configuration data [approved]	Not applicable (Not used in this module)
[SRS_BSW_00161] Microcontroller abstraction [approved]	Not applicable (Not used in this module)
[SRS_BSW_00162] ECU layout abstraction [approved]	Not applicable (Not used in this module)
[SRS_BSW_00164] Implementation of interrupt service routines [approved]	Not applicable (Not used in this module)
[SRS_BSW_00172] Compatibility and documentation of scheduling strategy [approved]	Not applicable (Not used in this module)
[SRS_BSW_00344] Reference to link-time configuration	Not applicable (Not used in this module)
[SRS_BSW_00404] Reference to post build time configuration	Not applicable (Not used in this module)
[SRS_BSW_00405] Reference to multiple configuration sets	Not applicable (Not used in this module)
[SRS_BSW_00345] Pre-compile-time configuration	Not applicable (Not used in this module)
[SRS_BSW_00159] Tool-based configuration	Not applicable (this is a tool requirement)
[SRS_BSW_00167] Static configuration checking	Not applicable (Requirement on configuration tool)
[SRS_BSW_00171] Configurability of optional functionality	see Chapter 10
[SRS_BSW_00170] Data for reconfiguration of AUTOSAR SW-Components	Not applicable (Not used in this module)
[SRS_BSW_00380] Separate C-Files for configuration parameters	Not applicable (Not used in this module)
[SRS_BSW_00419] Separate C-Files for pre-compile time configuration parameters	Not applicable (Not used in this module)
[SRS_BSW_00381] Separate configuration header file for pre-compile time parameters	Not applicable (Not used in this module)
[SRS_BSW_00412] Separate H-File for configuration parameters	Not applicable (Not used in this module)
[SRS_BSW_00383] List dependencies of configuration files	Not applicable (Not used in this module)
[SRS_BSW_00384] List dependencies to other modules	see Chapter 8.2

[SRS_BSW_00387] Specify the configuration class of callback function	Not applicable (Not used in this module)
[SRS_BSW_00388] Introduce containers	Not applicable (Not used in this module)
[SRS_BSW_00389] Containers shall have names	Not applicable (Not used in this module)
[SRS_BSW_00390] Parameter content shall be unique within the module	Not applicable (Not used in this module)
[SRS_BSW_00391] Parameter shall have unique names	Not applicable (Not used in this module)
[SRS_BSW_00392] Parameters shall have a type	Not applicable (Not used in this module)
[SRS_BSW_00393] Parameters shall have a range	Not applicable (Not used in this module)
[SRS_BSW_00394] Specify the scope of the parameters	Not applicable (Not used in this module)
[SRS_BSW_00395] List the required parameters (per parameter)	Not applicable (Not used in this module)
[SRS_BSW_00396] Configuration classes	Not applicable (Not used in this module)
[SRS_BSW_00397] Pre-compile-time parameters	Not applicable (Not used in this module)
[SRS_BSW_00398] Link-time parameters	Not applicable (Not used in this module)
[SRS_BSW_00399] Loadable Post-build time parameters	Not applicable (Not used in this module)
[SRS_BSW_00400] Selectable Post-build time parameters	Not applicable (Not used in this module)
[SRS_BSW_00438] Post Build Configuration Data Structure	Not applicable (Not used in this module)
[SRS_BSW_00402] Published information	DET040
[SRS_BSW_00375] Notification of wake-up reason	Not applicable (Not used in this module)
[SRS_BSW_00101] Initialization interface	SWS_Det_00019
[SRS_BSW_00003] Version identification	SWS_Det_00012
[SRS_BSW_00004] Version check	SWS_Det_00036
[SRS_BSW_00416] Sequence of Initialization	Not applicable (Not used in this module)
[SRS_BSW_00406] Check module initialization	Not applicable (Not used in this module)
[SRS_BSW_00437] Nolnit--Area in RAM	Not applicable (Not used in this module)
[SRS_BSW_00168] Diagnostic Interface of SW components	Not applicable (Not used in this module)
[SRS_BSW_00407] Function to read out published parameters	Not applicable (Not used in this module)
[SRS_BSW_00423] Usage of SW-C template to describe BSW modules with AUTOSAR Interfaces	Not applicable (Not used in this module)
[SRS_BSW_00424] BSW main processing function task allocation	Not applicable (Not used in this module)
[SRS_BSW_00425] Trigger conditions for schedulable objects	Not applicable (Not used in this module)
[SRS_BSW_00426] Exclusive areas in BSW modules	Not applicable (Not used in this module)
[SRS_BSW_00427] ISR description for BSW modules	Not applicable (Not used in this module)
[SRS_BSW_00428] Execution order dependencies of main processing functions	Not applicable (not related to this specification)
[SRS_BSW_00429] Restricted BSW OS functionality	Not applicable

access	(Not used in this module)
[BSW00431] The BSW Scheduler module implements task bodies	Not applicable (Not used in this module)
[SRS_BSW_00432] Modules should have separate main processing functions for read/receive and write/transmit data path	Not applicable (Not used in this module)
[SRS_BSW_00433] Calling of main processing functions	Not applicable (Not used in this module)
[BSW00434] The Schedule Module shall provide an API for exclusive areas	Not applicable (Not used in this module)
[SRS_BSW_00336] Shutdown interface	Not applicable (Not used in this module)
[SRS_BSW_00337] Classification of errors	Not applicable (this module does not produce own errors)
[SRS_BSW_00338] Detection and Reporting of development errors	Not applicable (this module does not produce own errors)
[SRS_BSW_00369] Do not return development error codes via API	Not applicable (Not used in this module)
[SRS_BSW_00339] Reporting of production relevant error status	Not applicable (Not used in this module)
[SRS_BSW_00348] Standard type header	Not applicable (Not used in this module)
[SRS_BSW_00357] Standard API return type	Not applicable (Not used in this module)
[BSW00421] Reporting of production relevant error events	Not applicable (Not used in this module)
[SRS_BSW_00422] Debouncing of production relevant error status	Not applicable (not related to this specification)
[BSW00420] Production relevant error event rate detection	Not applicable (not related to this specification)
[SRS_BSW_00417] Reporting of Error Events by Non-Basic Software	Not applicable (Not used in this module)
[SRS_BSW_00323] API parameter checking	Not applicable (Not used in this module)
[SRS_BSW_00004] Version check	Not applicable (Not used in this module)
[SRS_BSW_00409] Header files for production code error IDs	Not applicable (Not used in this module)
[SRS_BSW_00385] List possible error notifications	Not applicable (Not used in this module)
[SRS_BSW_00386] Configuration for detecting an error	Not applicable (Not used in this module)
[SRS_BSW_00435] Module Header File Structure for the Basic Software Scheduler	SWS_Det_00033
[SRS_BSW_00436] Module Header File Structure for the Basic Software Memory Mapping	SWS_Det_00006
[SRS_BSW_00390] Parameter content shall be unique within the module	Not applicable (Not used in this module)
[SRS_BSW_00391] Parameter shall have unique names	Not applicable (Not used in this module)
[SRS_BSW_00392] Parameters shall have a type	Not applicable (Not used in this module)
[SRS_BSW_00393] Parameters shall have a range	Not applicable (Not used in this module)
[SRS_BSW_00394] Specify the scope of the parameters	Not applicable (Not used in this module)
[SRS_BSW_00395] List the required parameters (per	Not applicable

parameter)	(Not used in this module)
[SRS_BSW_00396] Configuration classes	Not applicable (Not used in this module)
[SRS_BSW_00397] Pre-compile-time parameters	Not applicable (Not used in this module)
[SRS_BSW_00398] Link-time parameters	Not applicable (Not used in this module)
[SRS_BSW_00399] Loadable Post-build time parameters	Not applicable (Not used in this module)
[SRS_BSW_00400] Selectable Post-build time parameters	Not applicable (Not used in this module)
[SRS_BSW_00438] Post Build Configuration Data Structure	Not applicable (Not used in this module)
[SRS_BSW_00402] Published information	DET040 .
[SRS_BSW_00375] Notification of wake-up reason	Not applicable (Not used in this module)
[SRS_BSW_00101] Initialization interface	SWS Det 00019
[SRS_BSW_00003] Version identification	SWS Det 00012
[SRS_BSW_00004] Version check	SWS Det 00036
[SRS_BSW_00416] Sequence of Initialization	Not applicable (Not used in this module)
[SRS_BSW_00406] Check module initialization	Not applicable (Not used in this module)
[SRS_BSW_00437] Nolnit--Area in RAM	Not applicable (Not used in this module)
[SRS_BSW_00168] Diagnostic Interface of SW components	Not applicable (Not used in this module)
[SRS_BSW_00407] Function to read out published parameters	Not applicable (Not used in this module)
[SRS_BSW_00423] Usage of SW-C template to describe BSW modules with AUTOSAR Interfaces	Not applicable (Not used in this module)
[SRS_BSW_00424] BSW main processing function task allocation	Not applicable (Not used in this module)
[SRS_BSW_00425] Trigger conditions for schedulable objects	Not applicable (Not used in this module)
[SRS_BSW_00426] Exclusive areas in BSW modules	Not applicable (Not used in this module)
[SRS_BSW_00427] ISR description for BSW modules	Not applicable (Not used in this module)
[SRS_BSW_00428] Execution order dependencies of main processing functions	Not applicable (not related to this specification)
[SRS_BSW_00429] Restricted BSW OS functionality access	Not applicable (Not used in this module)
[BSW00431] The BSW Scheduler module implements task bodies	Not applicable (Not used in this module)
[SRS_BSW_00432] Modules should have separate main processing functions for read/receive and write/transmit data path	Not applicable (Not used in this module)
[SRS_BSW_00433] Calling of main processing functions	Not applicable (Not used in this module)
[BSW00434] The Schedule Module shall provide an API for exclusive areas	Not applicable (Not used in this module)
[SRS_BSW_00336] Shutdown interface	Not applicable (Not used in this module)
[SRS_BSW_00337] Classification of errors	Not applicable (this module does not produce own errors)
[SRS_BSW_00338] Detection and Reporting of	Not applicable

development errors	(this module does not produce own errors)
[SRS_BSW_00369] Do not return development error codes via API	Not applicable (Not used in this module)
[SRS_BSW_00339] Reporting of production relevant error status	Not applicable (Not used in this module)
[SRS_BSW_00348] Standard type header	Not applicable (Not used in this module)
[SRS_BSW_00357] Standard API return type	Not applicable (Not used in this module)
[BSW00421] Reporting of production relevant error events	Not applicable (Not used in this module)
[SRS_BSW_00422] Debouncing of production relevant error status	Not applicable (not related to this specification)
[BSW00420] Production relevant error event rate detection	Not applicable (not related to this specification)
[SRS_BSW_00417] Reporting of Error Events by Non-Basic Software	Not applicable (Not used in this module)
[SRS_BSW_00323] API parameter checking	Not applicable (Not used in this module)
[SRS_BSW_00004] Version check	Not applicable (Not used in this module)
[SRS_BSW_00409] Header files for production code error IDs	Not applicable (Not used in this module)
[SRS_BSW_00385] List possible error notifications	Not applicable (Not used in this module)
[SRS_BSW_00386] Configuration for detecting an error	Not applicable (Not used in this module)
[SRS_BSW_00435] Module Header File Structure for the Basic Software Scheduler	SWS_Det_00033
[SRS_BSW_00436] Module Header File Structure for the Basic Software Memory Mapping	SWS_Det_00006

6.2 Diagnostic Requirements

Since there is no need to have an extra document for the DET requirements, the requirements for the DET are contained in the SRS_Diagnostic ([6], Chapter 4.1.5). The following table shows the tracing to them.

Requirement	Satisfied by
SRS_Diag_04090 Provide a configurable list of error report receivers	[SWS_Det_00027]
SRS_Diag_04086 Provide a dedicated set of information	[SWS_Det_00009]
SRS_Diag_04087 Provide a development error report reception service	Chapter 8.2, [SWS_Det_00205] and [SWS_Det_00200] , [SWS_Det_00202] , [SWS_Det_00203] , [SWS_Det_00204] , [SWS_Det_00206]
SRS_Diag_04089 Fan-out of received error reports	[SWS_Det_00207]
SRS_Diag_04085 Provide an interface to receive error reports	Chapter 8, [SWS_Det_00009]

SRS_Diag_04101 Notification interface for log & trace (DLT)	[SWS_Det_00034
---	----------------

7 Functional specification

The Development Error Tracer provides functionality to support error detection and tracing of errors during the development of Software Components and other Basic Software Modules. For this purpose the Development Error Tracer receives and evaluates error messages from these components and modules.

Due to the always specific (non generic!) requirements regarding functionality in error cases there is no explicit specification of the DET implementation, except:

- A configurable list of error hooks will be executed in case of an error report.
- Interfaces will be provided to report errors, allow optional error recovery after reset, to handle optional error recovery information and to retrieve version information.

7.1 Initialization

[SWS_Det_00019] «The DET shall provide the initialization function Det_Init (see [SWS_Det_00008](#)).»(BSW00101)

[SWS_Det_00020] «Each call of the Det_Init function shall be used to set the Development Error Tracer to a defined initial status (e.g. by removing optional error recovery information).»()

Note: SWS_Det_00020 is not testable without knowledge about the non specified functionality and the probably used optional error recovery information.

Note: The usage and meaning of error recovery information is optional and not specified.

[SWS_Det_00025] «The Development Error Tracer shall provide the function Det_Start (see [SWS_Det_00010](#)).»()

Note: The Development Error Tracer's environment can use the function Det_Start to trigger the Development Error Tracer module for instance (if needed) in case of completed NVRAM initialization for persistent error storage.

Note: In case the Development Error Tracer does not require a startup call the Det_Start function can be empty.

Note: The integrator can decide by configuration of the EcuM, when Det_Init will be called.

Note: The integrator can decide by configuration of the EcuM or ModeM, when and whether Det_Start will be called.

7.2 Error Hooks

[SWS_Det_00207] 「To support debugging and error tracing during development, the Development Error Tracer provides functionality for notification of received error reports. Therefore so called error hooks are configurable. The error hooks will be used to forward error notifications. If at least one error hook has been configured, the Development Error Tracer will notify each received error report by calling the configured error hook(s). Configuration of error hooks is done by the AUTOSAR configuration methods described in chapter 10.」(SRS_Diag_04089)

[SWS_Det_00027] 「The Development Error Tracer shall be configurable by a list of Error_Hooks.」(SRS_Diag_04090)

[SWS_Det_00035] 「Each Error_Hook shall be called with the same set of parameters as the function Det_ReportError.」()

7.3 Error Reporting

[SWS_Det_00024] 「If the Development Error Tracer has not been initialized before Det_ReportError is called, Det_ReportError shall return immediately without any other action (no Error_Hook shall be used, no implementer specific function shall be performed and no development error shall be reported). 」()

Note: The Development Error Tracer shall never return an error indication (even in case of calling the un-initialized module).

[SWS_Det_00014] 「The error report function Det_ReportError shall call immediately all configured Error_Hooks (see [SWS_Det_00027](#)).」()

[SWS_Det_00018] 「The Development Error Tracer shall execute the list of configured Error_Hooks in the order given by the configuration.」()

[SWS_Det_00017] 「Each called Error_Hook shall get the parameters completely and unchanged that were received by Det_ReportError (see [SWS_Det_00009](#)).」()

[SWS_Det_00015] 「Optional implementation specific functionality shall only be performed after all configured Error_Hooks (see SWS_Det_00027) have been called.」()

[SWS_Det_00034] 「Each call of the Det_ReportError function shall be forwarded to the DLT module, if this is available/configured.」(SRS_Diag_04101)

[SWS_Det_00039] 「The Det_ReportError function shall be reentrant.」()

[SWS_Det_00026] 「Recursive calls of Det_ReportError are not allowed.」()

Note: Such recursive call could happen in case of calling an un-initialized module via an Error_Hook and would lead to a stack overflow.

7.4 Version Information

[SWS_Det_00023] 「The Development Error Tracer shall not deliver the version information if the received version info pointer is NULL and shall raise the Error DET_E_PARAM_POINTER and return without any further action.」()

7.5 Error classification

Since DET uses configurable functions that cannot be null, no errors can occur during Det_ReportError. However the function Det_GetVersionInfo might be called with a NULL-Pointer (see **[SWS_Det_00023]**). Therefore there is only one development error that can be thrown by the DET.

Type or error	Relevance	Related error code	Value [hex]
Det_GetVersionInfo called with null parameter pointer	Development	DET_E_PARAM_POINTER	0x01

7.6 Error detection

The call of Det_ReportError will cause calls to all configured callback functions see parameter DetErrorHook.

[SWS_Det_00050] 「The call of Det_ReportError will cause calls to all configured callback functions see parameter DetErrorHook in ECUC_Det_00005.」(SRS_Diag_04090, SRS_Diag_04089)

Note: In case no Error_Hooks are configured no additional functions are called. However the forwarding to DLT (see DET0340 and SWS_Det_00006_Conf) is still active if configured.

[SWS_Det_00051] «The DET shall detect the error DET_E_PARAM_POINTER in the function getVersionInfo by comparing the provided structure pointer to NULL.» (SRS_BSW_00369)

7.7 Error notification

[SWS_Det_00052] «The DET shall notify the error DET_E_PARAM_POINTER to all functions configured in DetErrorHook.»()

8 API specification

8.1 API

8.1.1 Imported types

This section lists all imported types used by the API. Even if the DET does not require new types, some RTE or Component types can be used within the configuration of the hook functions. Therefore the DET also has the standardized include structure (see SRS_BSW_00447) for modules with service interfaces.

Module	Imported Type
Std_Types	Std_ReturnType
	Std_VersionInfoType

8.1.2 Type definitions

No module specific types are required.

8.1.3 Function definitions

8.1.3.1 Det_Init

[SWS_Det_00008]

「

Service name:	Det_Init
Syntax:	void Det_Init (void)
Service ID[hex]:	0x00
Sync/Async:	Synchronous
Reentrancy:	Non Reentrant
Parameters (in):	None
Parameters (inout):	None
Parameters (out):	None
Return value:	None
Description:	Service to initialize the Development Error Tracer.

」(SRS_BSW_00310, SRS_BSW_00358, SRS_BSW_00414)

8.1.3.2 Det_ReportError

[SWS_Det_00009]

「

Service name:	Det_ReportError		
Syntax:	Std_ReturnType		

⌋(SRS_BSW_00310, SRS_Diag_04086, SRS_Diag_04085)

8.1.3.3 Det_Start

[SWS_Det_00010]

⌈

Service name:	Det_Start		
Syntax:	<pre> void Det_Start(void) </pre>		
Service ID[hex]:	0x02		
Sync/Async:	Synchronous		
Reentrancy:	Non Reentrant		
Parameters (in):	None		
Parameters (inout):	None		
Parameters (out):	None		
Return value:	None		
Description:	Service to start the Development Error Tracer.		

⌋(SRS_BSW_00310)

8.1.3.4 Det_GetVersionInfo

[SWS_Det_00011] ⌈

Service name:	Det_GetVersionInfo
---------------	--------------------

Syntax:	void Std_VersionInfoType* Det_GetVersionInfo(versioninfo)
Service ID[hex]:	0x03
Sync/Async:	Synchronous
Reentrancy:	Reentrant
Parameters (in):	None
Parameters (inout):	None
Parameters (out):	versioninfo Pointer to where to store the version information of this module.
Return value:	None
Description:	Returns the version information of this module.

_(SRS_BSW_00310, SRS_BSW_00318)

8.1.4 Expected Interfaces

This chapter specifies all required interfaces of other modules.

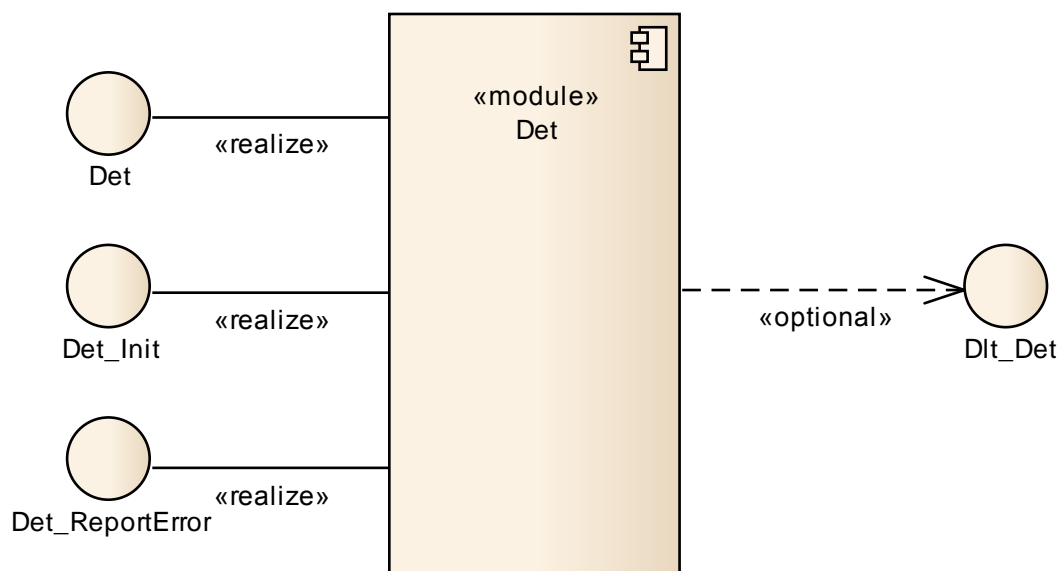


Figure 2: Expected Interfaces of DET

Figure 2 shows the interfaces of the DET. The only expected interface is optional; it is the Dlt_Det (see Section 8.1.4.2).

8.1.4.1 Mandatory Interfaces

There is no mandatory expected interface, but all <User_ErrorHooks> APIs that are used and are configured as callbacks have to be included.

API function	Description
--------------	-------------

Note: The name of the user API will not be specified, <User_ErrorHook> is a synonym only.

Note: A list of User_ErrorHook can be defined.

8.1.4.2 Optional Interfaces

This chapter defines the interfaces that are required to fulfill an optional functionality of the Development Error Tracer.

API function	Description
Dlt_DetForwardErrorTrace	Service to forward error reports from Det to Dlt.

8.2 Service Interfaces

8.2.1 Scope of this Chapter

This chapter defines the AUTOSAR Interfaces of the Development Error Tracer Service (DET).

The definitions in this section are interpreted to be in `ARPackage AUTOSAR/Services/DET`.

8.2.2 Overview

The Development Error Tracer BSW module was originally developed for supporting the other BSW modules during development phase. It is however possible to also use the Development Error Tracer to perform error tracing during development of SW-C's.

8.2.2.1 Use Case

On each ECU, there is one instance of the Development Error Tracer Service and several Atomic Software Component instances named “clients” which interact with the Development Error Tracer Service.

Each component instance may report a development error to the Development Error Tracer Service, and these errors can then be analyzed with debugging tools. The behavior of the Development Error Tracer is not standardized (except the optional forwarding of error reports to the DLT as described in chapter 7.3). Thus, what happens when using DET Service might differ on different ECUs or different Development Error Tracer implementations? The Development Error Tracer might for example do one of the following:

- Set debugger breakpoint within error reporting API
- Count reported errors
- Log calls and passed parameters in RAM buffer
- Send reported errors via communication interface to external logger

Note: For debugging and tracing purpose e.g. in an Error Hook, the use of additional functionalities offered by “Debugging Module” and “Log and Trace Module” should be considered.

8.2.3 Specification of the Ports and Port Interfaces

This chapter specifies the ports and port interfaces which are needed in order to operate the Development Error Tracer functionality over the VFB.

Each AUTOSAR SW-C which uses the service must contain "service ports" in its own SW-C description which will be typed by the same interfaces and which has to be connected to the ports of the Development Error Tracer, so that the RTE, the appropriate IDs and the required symbols can be generated.

8.2.3.1 General Approach

The client-server paradigm is used since more than one parameter has to be transferred.

In order to reuse the C API already defined in the Development Error Tracer BSW module, the Development Error Tracer service uses the same argument names as in the C API, even though the names can not directly be mapped into the SW-C world. "Module ID" can preferably be interpreted as either a component or runnable entity but this is the decision of the implementer of the SW-C.

The Development Error Tracer service needs a "Module ID" as first argument for the C-function.

In order to keep the client code independent from the configuration of number of clients, the "Module IDs" are not passed from the clients to Development Error Tracer but are modeled as "port defined argument values" of the Provide ports on the Development Error Tracer side. As a consequence, the "Module IDs" will not show up as arguments in the operation of the client-server interface. As a further consequence for this approach, there will be separate ports for each "Module ID" both on the client side as well as on the server side.

The Module ID type is of range 0...65535. Values in the range of 0...255 are reserved for Basic Software Modules, all others can be used for application software components.

8.2.3.2 Data Types

[SWS_Det_00200] 「For the port interface of the Development Error Tracer service uint8 and uint16 are required and refer to the AUTOSAR data types.」(SRS_Diag_04087)

8.2.3.3 Port Interface

[SWS_Det_00202] 「

Name	DETSERVICE	
Comment	Service of Development Error Tracer	
IsService	true	
Variation	--	
Possible Errors	0	E_OK

Operations

ReportError		
Comments	calls Det_ReportError with the Module ID of the port	
Variation	--	
Parameters	InstanceId	
	Comment	The identifier of the index based instance of a module, starting from 0, If the module is a single instance module it shall pass 0 as the InstanceId.
	Type	uint8
	Variation	--
	Direction	IN
	ApId	
	Comment	ID of API service in which error is detected (defined in SWS of calling module).
	Type	uint8
	Variation	--
	Direction	IN
	ErrorId	
	Comment	ID of detected development error (defined in SWS of calling module).
	Type	uint8
	Variation	--
	Direction	IN
Possible Errors	E_OK	Successfully Reported Error

_(SRS_Diag_04087)

[SWS_Det_00203] 「Note that the returned values is always true (E_OK), since a Std_ReturnType is required for all services」_(SRS_Diag_04087)

Compared to the API, the “Det_” prefix in the name is not required, because the name given here will show up in the XML not globally but as part of an interface description.

Note that the argument InstanceId can not be used for component instance since only the first argument (in this case ModuleId) can be used in "port defined argument value". Instead, multiple instantiations of a module are converted into multiple "Module IDs".

It is up to the implementer of a SW-C to decide about the semantics of the arguments `Instanceld`, `Apild` and `Errorld` since these arguments are not standardized by AUTOSAR (at least not above the RTE). However, the `Apild` typically corresponds to the operations that can report an error, and `Errorld` corresponds to the type of error that is reported. Both `Apild` and `Errorld` are numbered 0x00..0xFF without specific order.

Figure 3 shows how AUTOSAR Software components (single or multiple instances) are connected via service ports to the DET.

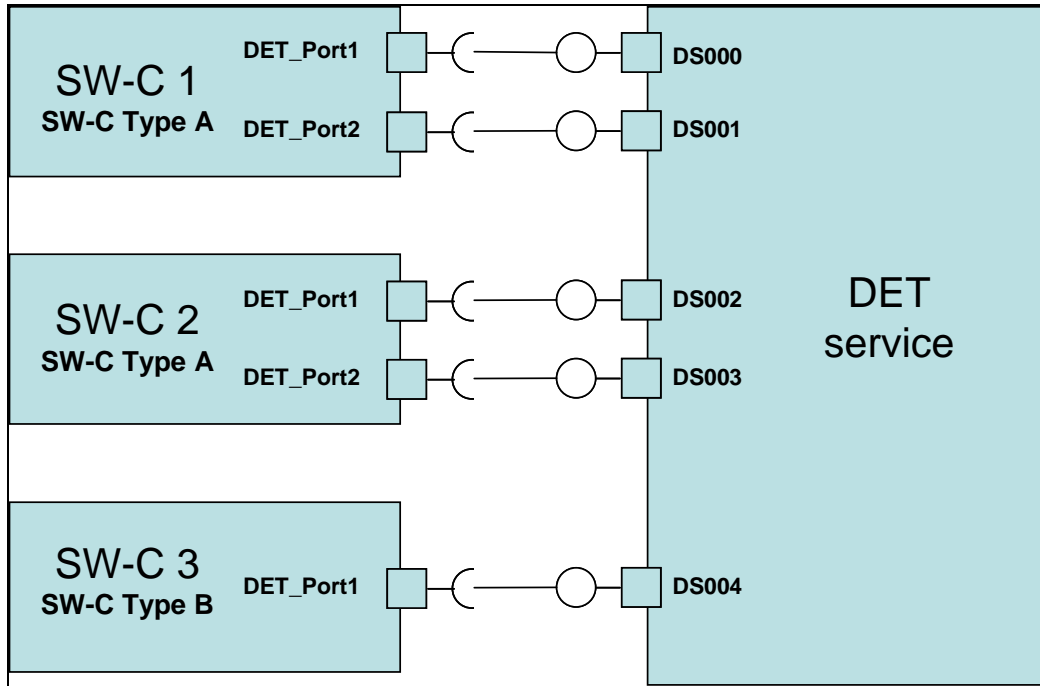


Figure 3: Example of SW-Cs connected to the DET via service ports. On the left side, there are two instances of component SW-C Type A and one instance of component SW-C Type B.

On the DET side, there is one port per "Module ID" providing the service of the interface `DETService` described above. Each client has one port for requiring the service for each "Module ID" associated with that Software Component (SWC or BSW-module).

Typically one port is created for each SW-C. It is also possible to create a port for each runnable entity inside a SW-C.

There is no naming convention for the ports providing the services. In this example they are named: `DS000`, `DS001`, ... , `DSnnn`

[SWS_Det_00041] «The port values shall be converted into an `uint16`, with values between 0x1000 and 0xFFFF, in order to not interfere with BSW Module IDs.»()

8.2.4 Definition of the Service

[SWS_Det_00204] «The Provide Ports have a certain relation to the internal behavior of the DET: With each call, the "Module ID" is passed as an additional argument by

the RTE to the C-function which implements the associated runnable entity (feature “port defined argument value”). (SRS_Diag_04087)

[SWS_Det_00205] ⌈

The DET shall provide the following Port for each configured SWC module with the given name.

Name	Det_{Name}		
Kind	ProvidedPort	Interface	DETSERVICE
Description	--		
Variation	Name = {ecuc(Det/DetConfigSet/DetModule.SHORT-NAME)}		

⌋(SRS_Diag_04087)

8.2.5 Configuration of the DET

[SWS_Det_00206] ⌈The "Module IDs" of the DET service are modeled as “port defined argument values”. Thus the configuration of those values is part of the RTE configuration. Pre-compile configuration can be done by changing the XML specification for the ports on the client (SW-C) or service (i.e. DET) side.⌋(SRS_Diag_04087)

9 Sequence diagrams

9.1 Initialization

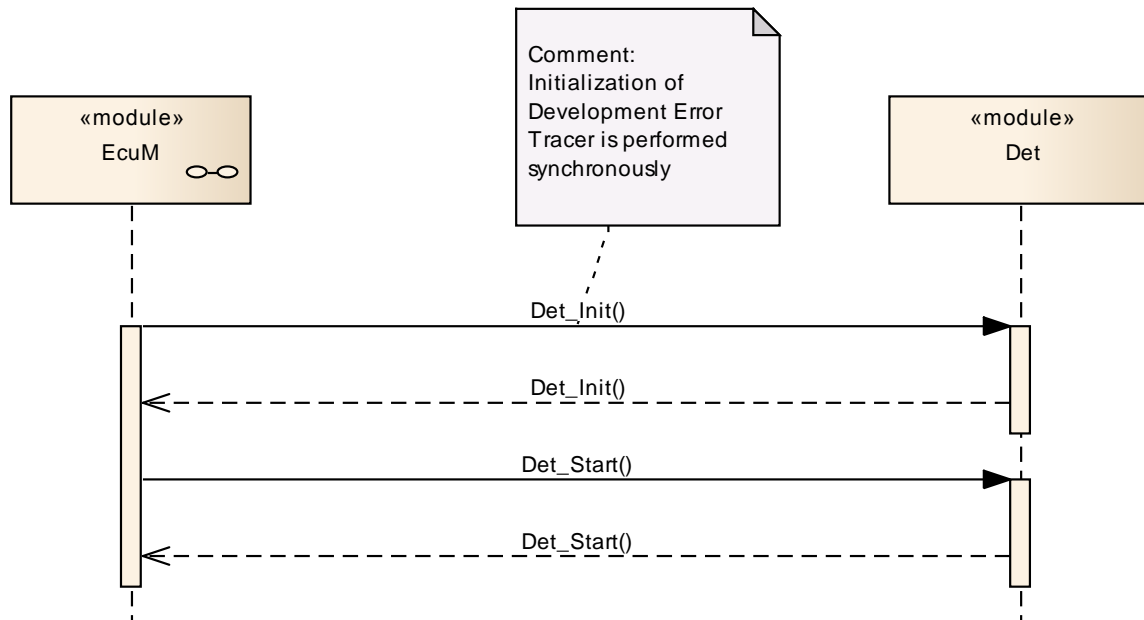


Figure 4: Initialization and start of DET

9.2 Error reporting

Precondition: Initialization as described in chapter 9.1.

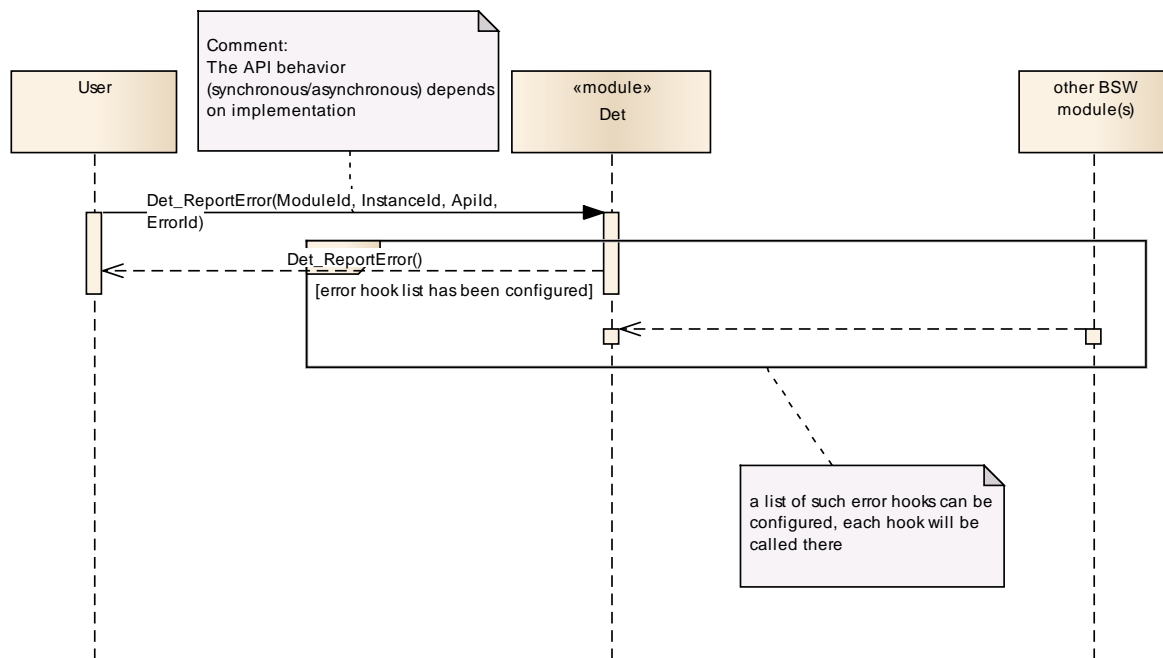


Figure 5: Call of Det_ReportError and user defined hooks

10 Configuration specification

10.1 Variants

[SWS_Det_00101] 「For DET only the VARIANT-PRE-COMPILE is relevant.」()

10.2 Containers and configuration parameters

The Parameters of DET are described in the following sub-sections.

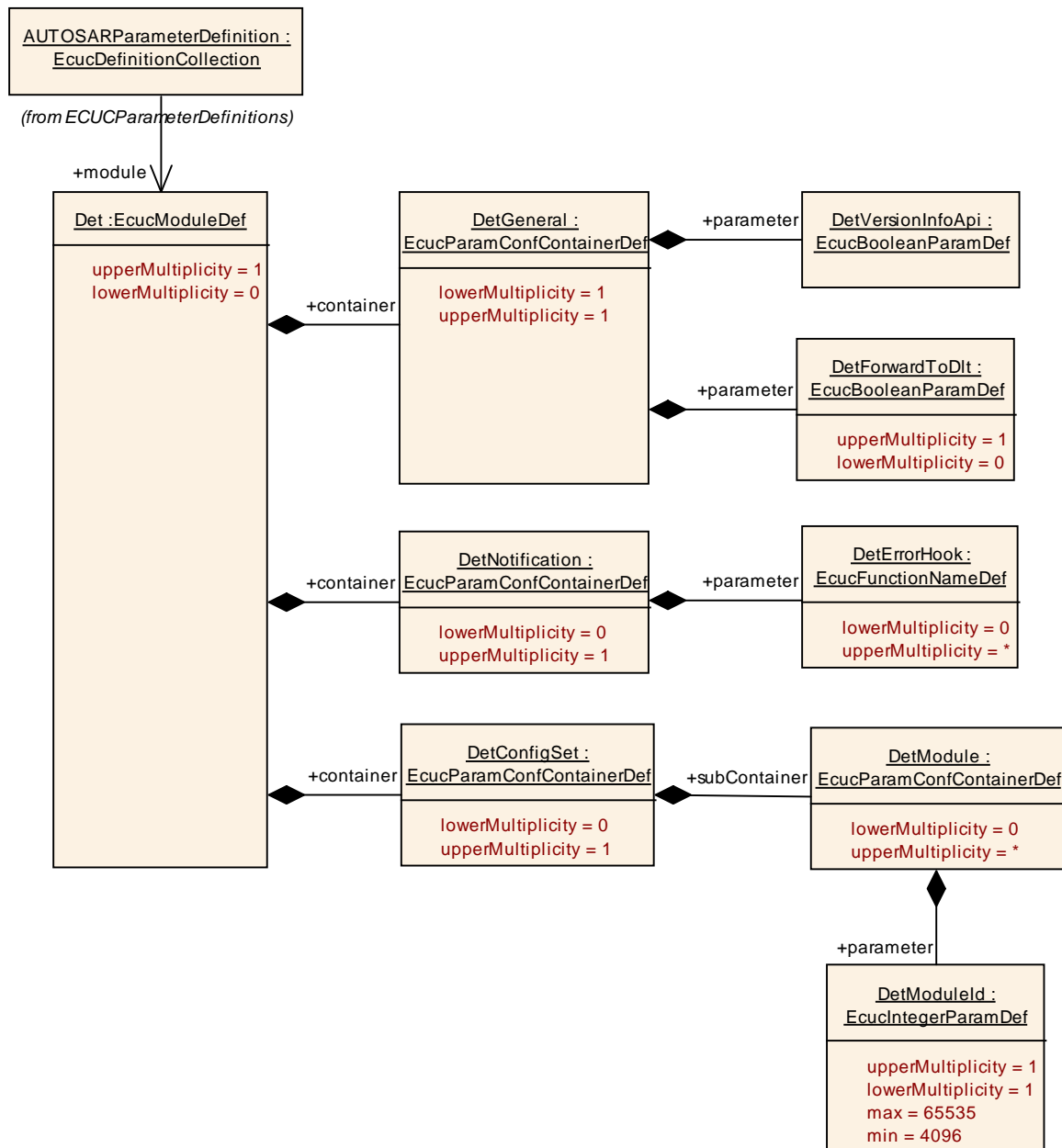


Figure 6 gives an overview over them.

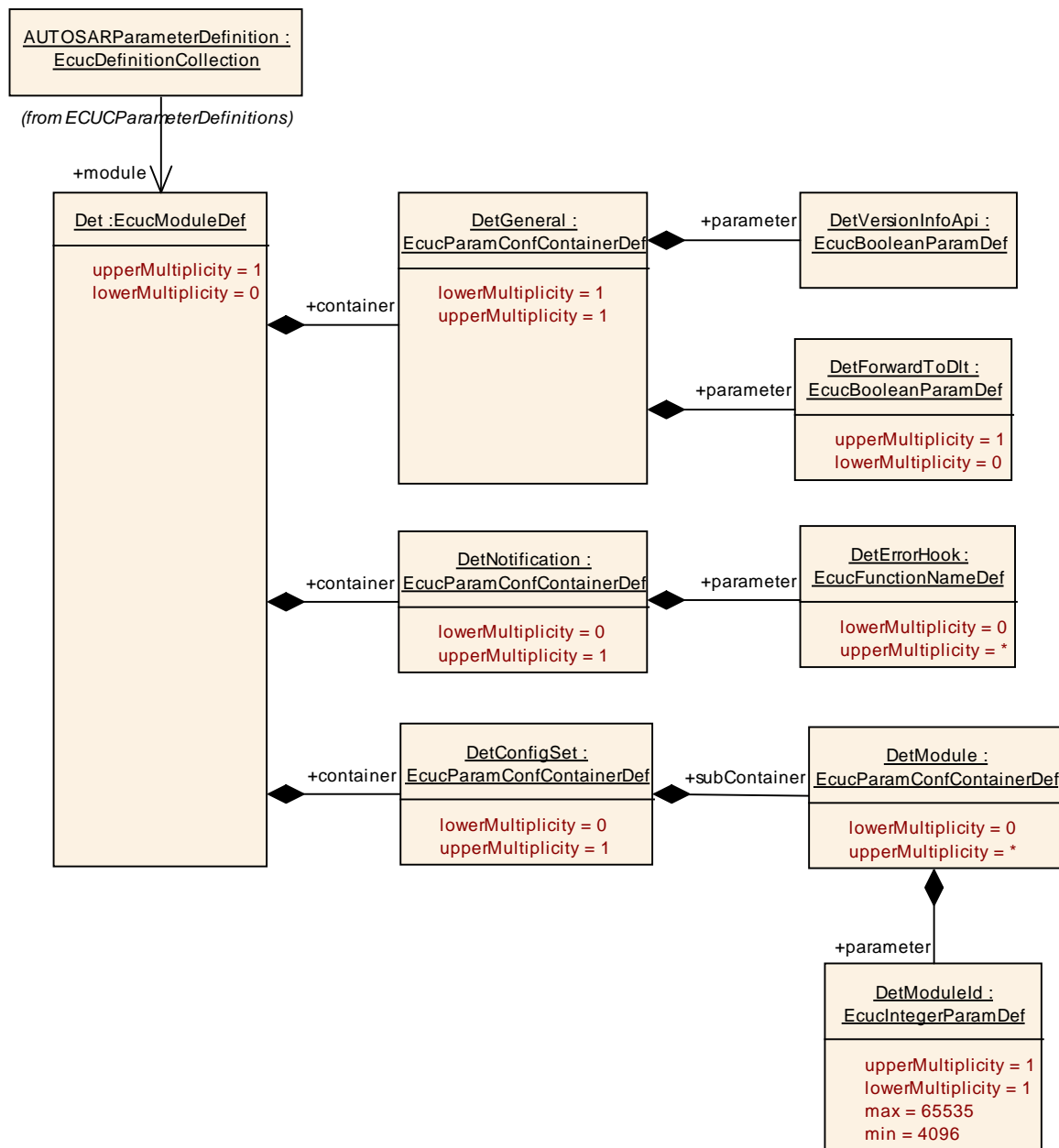


Figure 6: Parameters of DET

10.2.1 Det

SWS Item	ECUC_Det_00001 :
Module Name	Det
Module Description	Det configuration includes the functions to be called at notification. On one side the application functions are specified and in general it can be decided whether Dlt shall be called at each call of Det.

Included Containers		
Container Name	Multiplicity	Scope / Dependency
DetConfigSet	0..1	Configuration set container for Det.
DetGeneral	1	Generic configuration parameters of the Det module.

DetNotification	0..1	Configuration of the notification functions.
-----------------	------	--

10.2.2 DetGeneral

SWS Item	ECUC_Det_00002 :	
Container Name	DetGeneral	
Description	Generic configuration parameters of the Det module.	
Configuration Parameters		

SWS Item	ECUC_Det_00006 :		
Name	DetForwardToDlt {DET_FORWARD_TO_DLT}		
Description	Only if the parameter is present and set to true, the Det requires the Dlt interface and forwards it's call to the function Dlt_DetForwardErrorTrace. In this case the optional interface to Dlt_Det is required.		
Multiplicity	0..1		
Type	EcucBooleanParamDef		
Default value	--		
ConfigurationClass	Pre-compile time	X	All Variants
	Link time	--	
	Post-build time	--	
Scope / Dependency	scope: local		

SWS Item	ECUC_Det_00003 :		
Name	DetVersionInfoApi {DET_VERSION_INFO_API}		
Description	Pre-processor switch to enable / disable the API to read out the modules version information. true: Version info API enabled. false: Version info API disabled.		
Multiplicity	1		
Type	EcucBooleanParamDef		
Default value	--		
ConfigurationClass	Pre-compile time	X	All Variants
	Link time	--	
	Post-build time	--	
Scope / Dependency	scope: local		

No Included Containers

10.2.3 DetNotification

SWS Item	ECUC_Det_00004 :	
Container Name	DetNotification	
Description	Configuration of the notification functions.	
Configuration Parameters		

SWS Item	ECUC_Det_00005 :	
Name	DetErrorHook {DET_ERROR_HOOK}	
Description	Optional list of functions to be called by the Development Error Tracer in	

	context of each call of Det_ReportError.		
	The type of these functions shall be identical the type of Det_ReportError itself: Std_ReturnType (*)(uint16, uint8, uint8, uint8).		
Multiplicity	0..*		
Type	EcucFunctionNameDef		
Default value	--		
maxLength	--		
minLength	--		
regularExpression	--		
ConfigurationClass	Pre-compile time	X	All Variants
	Link time	--	
	Post-build time	--	
Scope / Dependency	scope: local		

No Included Containers

10.2.4 DetConfigSet

SWS Item	ECUC_Det_00007 :	
Container Name	DetConfigSet	
Description	Configuration set container for Det.	
Configuration Parameters		
Included Containers		
Container Name	Multiplicity	Scope / Dependency
DetModule	0..*	This container describes a non BSW module that is using the Det via Service Interface.

10.3 Published Information

Additional module-specific published parameters are listed below if applicable.

11 Not applicable requirements

[SWS_Det_00999] 「These requirements are not applicable to this specification.」(

SRS_BSW_00301, SRS_BSW_00304, SRS_BSW_00305, SRS_BSW_00306,
SRS_BSW_00307, SRS_BSW_00308, SRS_BSW_00309, SRS_BSW_00312,
SRS_BSW_00439, SRS_BSW_00314, BSW00324, SRS_BSW_00325,
SRS_BSW_00326, SRS_BSW_00328, SRS_BSW_00329, SRS_BSW_00330,
SRS_BSW_00331, SRS_BSW_00333, SRS_BSW_00334, SRS_BSW_00335,
SRS_BSW_00341, SRS_BSW_00342, SRS_BSW_00343, SRS_BSW_00341,
SRS_BSW_00346, SRS_BSW_00347, SRS_BSW_00441, SRS_BSW_00350,
SRS_BSW_00353, SRS_BSW_00355, SRS_BSW_00350, SRS_BSW_00359,
SRS_BSW_00360, SRS_BSW_00440, SRS_BSW_00361, SRS_BSW_00370,
SRS_BSW_00371, SRS_BSW_00373, SRS_BSW_00376, SRS_BSW_00377,
SRS_BSW_00378, SRS_BSW_00379, SRS_BSW_00401, SRS_BSW_00410,
SRS_BSW_00413, SRS_BSW_00415, SRS_BSW_00005, SRS_BSW_00006,
SRS_BSW_00007, SRS_BSW_00009, SRS_BSW_00010, SRS_BSW_00158,
SRS_BSW_00160, SRS_BSW_00161, SRS_BSW_00162, SRS_BSW_00164,
SRS_BSW_00172, SRS_BSW_00344, SRS_BSW_00404, SRS_BSW_00405,
SRS_BSW_00345, SRS_BSW_00159, SRS_BSW_00167, SRS_BSW_00170,
SRS_BSW_00380, SRS_BSW_00419, SRS_BSW_00381, SRS_BSW_00412,
SRS_BSW_00383, SRS_BSW_00387, SRS_BSW_00388, SRS_BSW_00389,
SRS_BSW_00390, SRS_BSW_00391, SRS_BSW_00392, SRS_BSW_00393,
SRS_BSW_00394, SRS_BSW_00395, SRS_BSW_00396, SRS_BSW_00397,
SRS_BSW_00398, SRS_BSW_00399, SRS_BSW_00400, SRS_BSW_00438,
SRS_BSW_00375, SRS_BSW_00416, SRS_BSW_00406, SRS_BSW_00437,
SRS_BSW_00168, SRS_BSW_00407, SRS_BSW_00423, SRS_BSW_00424,
SRS_BSW_00425, SRS_BSW_00426, SRS_BSW_00427, SRS_BSW_00428,
SRS_BSW_00429, BSW00431, SRS_BSW_00432, SRS_BSW_00433, BSW00434,
SRS_BSW_00336, SRS_BSW_00337, SRS_BSW_00338, SRS_BSW_00369,
SRS_BSW_00339, SRS_BSW_00348, SRS_BSW_00357, BSW00421,
SRS_BSW_00422, BSW00420, SRS_BSW_00417, SRS_BSW_00323,
SRS_BSW_00004, SRS_BSW_00409, SRS_BSW_00385, SRS_BSW_00386)