

<b>Document Title</b>	Specification of Module XCP
<b>Document Owner</b>	AUTOSAR
<b>Document Responsibility</b>	AUTOSAR
<b>Document Identification No</b>	412

<b>Document Status</b>	published
<b>Part of AUTOSAR Standard</b>	Classic Platform
<b>Part of Standard Release</b>	R23-11

<b>Document Change History</b>			
<b>Date</b>	<b>Release</b>	<b>Changed by</b>	<b>Description</b>
2023-11-23	R23-11	AUTOSAR Release Management	<ul style="list-style-type: none"> <li>Removed all Handleld configuration parameters</li> </ul>
2022-11-24	R22-11	AUTOSAR Release Management	<ul style="list-style-type: none"> <li>Editorial changes</li> </ul>
2021-11-25	R21-11	AUTOSAR Release Management	<ul style="list-style-type: none"> <li>No content changes</li> </ul>
2020-11-30	R20-11	AUTOSAR Release Management	<ul style="list-style-type: none"> <li>Improve the structure of the 'error sections'</li> </ul>
2019-11-28	R19-11	AUTOSAR Release Management	<ul style="list-style-type: none"> <li>No content changes</li> <li>Changed Document Status from Final to published</li> </ul>
2018-10-31	4.4.0	AUTOSAR Release Management	<ul style="list-style-type: none"> <li>Update XCP on CAN version to support CAN FD</li> </ul>
2017-12-08	4.3.1	AUTOSAR Release Management	<ul style="list-style-type: none"> <li>Editorial changes</li> <li>Update development errors</li> <li>Adapt XCP with CAN return types</li> <li>Add new configuration container XcpChannel</li> </ul>





2016-11-30	4.3.0	AUTOSAR Release Management	<ul style="list-style-type: none"> <li>• Editorial changes</li> <li>• Harmonize descriptions of identical API functions</li> <li>• Removal of unused artifacts and obsolete elements</li> </ul>
2015-07-31	4.2.2	AUTOSAR Release Management	<ul style="list-style-type: none"> <li>• Debugging support marked as obsolete</li> <li>• Editorial changes</li> <li>• Modifications in some parameters multiplicity of XcpDaqlist container</li> </ul>
2014-10-31	4.2.1	AUTOSAR Release Management	<ul style="list-style-type: none"> <li>• Editorial changes</li> <li>• Minor corrections</li> <li>• Changed the multiplicity of XcpEventChannelTriggeredDaqListRef</li> <li>• Remove limitation “Flash Programming for ECU development purposes”</li> </ul>
2014-03-31	4.1.3	AUTOSAR Release Management	<ul style="list-style-type: none"> <li>• Editorial correction for faulty references links</li> <li>• Minor editorial correction for SWS_Xcp_00841, SWS_Xcp_00844</li> <li>• Changed Xcp_RxIndication argument from PduInfoType * to const PduInfoType *</li> </ul>
2013-10-31	4.1.2	AUTOSAR Release Management	<ul style="list-style-type: none"> <li>• Minor corrections</li> <li>• Editorial changes</li> <li>• Removed chapter(s) on change documentation</li> </ul>
2013-03-15	4.1.1	AUTOSAR Administration	<ul style="list-style-type: none"> <li>• Reclassify XCP_E_INIT_FAILED from class production error to development</li> </ul>



△

2013-03-15	4.1.1	AUTOSAR Administration	<ul style="list-style-type: none"> <li>• Added parameters for Event Channel and Timestamp configuration</li> <li>• Added possibility to calculate memory consumption for ODT (DAQ &amp; STIM)</li> <li>• Restructuring configuration parameters for static &amp; dynamic ODT</li> <li>• Added support for deactivation of transmission capabilities</li> </ul>
2011-12-22	4.0.3	AUTOSAR Administration	<ul style="list-style-type: none"> <li>• Add chapter 7.8 (Version check), RTE limitation, OS Counter Ref</li> <li>• Remove InstanceID and known limitation (OS)</li> </ul>
2010-09-30	3.1.5	AUTOSAR Administration	<ul style="list-style-type: none"> <li>• Initial Release</li> </ul>

## Disclaimer

This work (specification and/or software implementation) and the material contained in it, as released by AUTOSAR, is for the purpose of information only. AUTOSAR and the companies that have contributed to it shall not be liable for any use of the work.

The material contained in this work is protected by copyright and other types of intellectual property rights. The commercial exploitation of the material contained in this work requires a license to such intellectual property rights.

This work may be utilized or reproduced without any modification, in any form or by any means, for informational purposes only. For any other purpose, no part of the work may be utilized or reproduced, in any form or by any means, without permission in writing from the publisher.

The work has been developed for automotive applications only. It has neither been developed, nor tested for non-automotive applications.

The word AUTOSAR and the AUTOSAR logo are registered trademarks.

## Contents

1	Introduction and functional overview	8
2	Acronyms and Abbreviations	9
3	Related documentation	10
3.1	Input documents & related standards and norms	10
3.2	Related specification	10
4	Constraints and assumptions	11
4.1	Limitations	11
4.2	Applicability to car domains	11
5	Dependencies to other modules	12
5.1	AUTOSAR RTE (BSW Scheduler)	12
5.2	AUTOSAR FlexRay Interface	12
5.3	AUTOSAR CAN Interface	12
5.4	AUTOSAR SocketAdaptor	12
5.5	AUTOSAR RTE	12
5.6	AUTOSAR OS	12
5.7	AUTOSAR Diagnostic Event Manager	13
5.8	AUTOSAR Default Error Tracer	13
5.9	File structure	13
5.9.1	Code file structure	13
6	Requirements Tracing	14
7	Functional specification	17
7.1	XCP on CAN	18
7.2	XCP on FlexRay	19
7.3	XCP on Ethernet	20
7.4	General Requirements	20
7.5	Error Classification	21
7.5.1	Development Errors	21
7.5.2	Runtime Errors	21
7.5.3	Transient Faults	21
7.5.4	Production Errors	21
7.5.5	Extended Production Errors	21
7.6	Version checking	22
7.7	Security Events	22
8	API specification	23
8.1	Imported types	23
8.2	Type definitions	23
8.2.1	Xcp_ConfigType	23
8.2.2	Xcp_Transmission Mode Type	24

8.3	Function definitions	24
8.3.1	Xcp_Init	24
8.3.2	Xcp_GetVersionInfo	25
8.3.3	Xcp_SetTransmissionMode	25
8.4	Callback notifications	26
8.4.1	Xcp_<Lo>RxIndication	26
8.4.2	Xcp_<Lo>TxConfirmation	27
8.4.3	Xcp_<Lo>TriggerTransmit	28
8.5	Scheduled functions	28
8.5.1	Xcp_MainFunction	29
8.6	Expected interfaces	29
8.6.1	Mandatory interfaces	29
8.6.2	Optional interfaces	29
8.6.3	Configurable interfaces	30
9	Sequence diagrams	31
9.1	XCP on FlexRay	31
9.1.1	Xcp on FlexRay Transmit	31
9.1.2	Xcp on FlexRay Receive Indication	31
9.2	XCP on CAN	32
9.2.1	Xcp on CAN Transmit	32
9.2.2	Xcp on CAN Transmit Confirmation	32
9.2.3	Xcp on CAN Receive Indication	33
9.3	XCP on Ethernet	33
9.3.1	Xcp on Ethernet Receive Indication	33
10	Configuration specification	34
10.1	How to read this chapter	34
10.2	Containers and configuration parameters	34
10.2.1	Xcp	34
10.2.2	XcpGeneral	35
10.2.3	XcpConfig	44
10.2.4	XcpDaqList	45
10.2.5	XcpDto	46
10.2.6	XcpOdt	47
10.2.7	XcpOdtEntry	48
10.2.8	XcpEventChannel	51
10.2.9	XcpPdu	56
10.2.10	XcpRxPdu	56
10.2.11	XcpTxPdu	57
10.2.12	XcpCommunicationChannel	58
10.2.13	XcpPageSwitching	60
10.2.14	XcpSegment	61
10.2.15	XcpPage	62
10.3	Published Information	63
A	Not applicable requirements	64

B	Change history of AUTOSAR traceable items	65
B.1	Traceable item history of this document according to AUTOSAR Release R22-11	65
B.1.1	Added Specification Items in R22-11	65
B.1.2	Changed Specification Items in R22-11	67
B.1.3	Deleted Specification Items in R22-11	67
B.2	Traceable item history of this document according to AUTOSAR Release R23-11	68
B.2.1	Added Specification Items in R23-11	68
B.2.2	Changed Specification Items in R23-11	70
B.2.3	Deleted Specification Items in R23-11	70

# 1 Introduction and functional overview

This specification specifies the functionality, API and the configuration of the AUTOSAR Basic Software module XCP

XCP is a protocol description (ASAM standard) between a master (tool) and a slave (device), which provides the following basic features:

- Synchronous data acquisition (measurement)
- Synchronous data stimulation (for rapid prototyping)
- Online memory calibration (read / write access)
- Calibration data page initialization and switching
- Flash Programming for ECU development purposes
- Every feature is optional and the access can be restricted
- Various communications busses are supported

XCP was designed according to the following principles:

- Minimal Slave resource consumption (RAM, ROM, runtime)
- Efficient communication
- Simple Slave implementation



## 2 Acronyms and Abbreviations

The glossary below includes acronyms and abbreviations relevant to the XCP that are not included in the [1, AUTOSAR glossary].

Acronym:	Description:
AUTOSAR	AUTomotive Open System ARchitecture
A2L	File Extension for an ASAM 2MC Language File
ASAM	Association for Standardization of Automation and Measuring Systems
BSW	Basic Software
CAN	Controller Area Network
CanIf	CAN Interface
CTO	Command Transfer Object
DAQ	Data AcQuisition, Data AcQuisition Packet
DTO	Data Transfer Object
ECU	Electronic Control Unit
FrIf	FlexRay Interface
LPDU	Data Link Layer PDU
MCD	Measurement Calibration and Diagnostics
MISRA	Motor Industry Software Reliability Association
ODT	Object Descriptor Table
PDU	Protocol Data Unit
RAM	Random Access Memory
ROM	Read Only Memory
SchM	Schedule Manager
SVN	Subversion
SRS	Software Requirements Specification
STIM	Data Stimulation packet
SW	Software
SWS	Software Specification
TCP/IP	Transfer Control Protocol / Internet Protocol
TS	Time Stamp
UDP/IP	User Datagram Protocol / Internet Protocol
URL	Uniform Resource Locator
XCP	Universal Calibration Protocol
XML	Extensible Markup Language
ISR	Interrupt Service Routine
DET	Default Error Tracer (AUTOSAR BSW module)

**Table 2.1: Acronyms used in the scope of this Document**

## 3 Related documentation

### 3.1 Input documents & related standards and norms

- [1] Glossary  
AUTOSAR\_FO\_TR\_Glossary
- [2] General Specification of Basic Software Modules  
AUTOSAR\_CP\_SWS\_BSWGeneral
- [3] ASAM XCP - The Universal Measurement and Calibration Protocol:ASAM\_XCP\_  
Part1-Overview - Version 1.1  
<http://www.asam.net>
- [4] General Requirements on Basic Software Modules  
AUTOSAR\_CP\_SRS\_BSWGeneral
- [5] Requirements on Module XCP  
AUTOSAR\_CP\_SRS\_XCP
- [6] ASAM XCP - Transport Layer Specification XCP on CAN:ASAM\_XCP\_Part3  
Transport-Layer-Specification\_XCPonCAN - Version 1.2  
<http://www.asam.net>
- [7] Specification of CAN Interface  
AUTOSAR\_CP\_SWS\_CANInterface
- [8] ASAM XCP - Transport Layer Specification XCP on FlexRay:ASAM\_XCP\_Part3-  
Transport-Layer-Specification\_XCPonFlexRay-Version 1.1  
<http://www.asam.net>
- [9] Specification of FlexRay Interface  
AUTOSAR\_CP\_SWS\_FlexRayInterface
- [10] ASAM XCP - Transport Layer Specification XCP on Ethernet:ASAM\_XCP\_Part3-  
Transport-Layer-Specification\_XCPonEthernet (TCP\_IP&UDP\_IP) - Version 1.1  
<http://www.asam.net>
- [11] Specification of Socket Adaptor  
AUTOSAR\_CP\_SWS\_SocketAdaptor

### 3.2 Related specification

AUTOSAR provides a General Specification on Basic Software modules [2, SWS BSW General], which is also valid for XCP.

Thus, the specification SWS BSW General shall be considered as additional and required specification for XCP.

## 4 Constraints and assumptions

### 4.1 Limitations

The following XCP features are currently out of scope:

- The SET\_DAQ\_ID command according to the XCP CAN Transport Layer Specification is not part of the AUTOSAR XCP module
- Currently, the AUTOSAR RTE does not offer APIs for direct communication with XCP
- For further details concerning the supported feature set, please refer to [3]
- NAX is only configurable through the ASAM configuration file A2L.

Please note:

For the communications bus LIN, no ASAM XCP is specified.

### 4.2 Applicability to car domains

n/a

## **5 Dependencies to other modules**

This section describes the relations to other modules and files within the AUTOSAR basic software architecture. It contains brief descriptions of configuration information and services, which are required by the XCP module from other modules.

### **5.1 AUTOSAR RTE (BSW Scheduler)**

The BSW Scheduler calls the main functions of the Xcp, which are necessary for the cyclic processes of the Xcp.

### **5.2 AUTOSAR FlexRay Interface**

The FlexRay Interface is used to transmit and receive XCP PDUs via FlexRay.

### **5.3 AUTOSAR CAN Interface**

The CAN Interface is used to transmit and receive XCP PDUs via CAN.

### **5.4 AUTOSAR SocketAdaptor**

The SocketAdaptor is used to transmit and receive XCP PDUs via Ethernet.

### **5.5 AUTOSAR RTE**

The RTE is used for copying calibration parameters from ROM/FLASH to RAM and to use the double pointered method

### **5.6 AUTOSAR OS**

In order to be able to use the time stamped feature of XCP, an AUTOSAR OS Counter is used.

## 5.7 AUTOSAR Diagnostic Event Manager

In order to be able to report production errors, the XCP has to have access to the Diagnostic Event Manager.

## 5.8 AUTOSAR Default Error Tracer

In order to be able to report default errors, the XCP has to have access to the error hook of the Default Error Tracer.

## 5.9 File structure

### 5.9.1 Code file structure

**[SWS\_Xcp\_00501]** [The code file structure shall not be defined within this specification completely. At this point it shall be pointed out that the code-file structure shall include the following files named:

- Xcp.c - general source code file of the module XCP
- Xcp\_Cfg.c - for pre-compile time configurable parameters
- Xcp\_Lcfg.c - for link time configurable parameters and
- Xcp\_PBcfg.c - for post build time configurable parameters.

]([SRS\\_BSW\\_00419](#), [SRS\\_BSW\\_00383](#), [SRS\\_BSW\\_00346](#), [SRS\\_BSW\\_00380](#))

These files shall contain all link time and post-build time configurable parameters.

## 6 Requirements Tracing

The following tables reference the requirements specified in [4] and [5] and links to the fulfillment of these. Please note that if column “Satisfied by” is empty for a specific requirement this means that this requirement is not fulfilled by this document.

Requirement	Description	Satisfied by
[SRS_BSW_00003]	All software modules shall provide version and identification information	[SWS_Xcp_00807]
[SRS_BSW_00101]	The Basic Software Module shall be able to initialize variables and hardware in a separate initialization function	[SWS_Xcp_00803]
[SRS_BSW_00159]	All modules of the AUTOSAR Basic Software shall support a tool based configuration	[SWS_Xcp_00102]
[SRS_BSW_00167]	All AUTOSAR Basic Software Modules shall provide configuration rules and constraints to enable plausibility checks	[SWS_Xcp_00103] [SWS_Xcp_00104] [SWS_Xcp_00105]
[SRS_BSW_00318]	Each AUTOSAR Basic Software Module file shall provide version numbers in the header file	[SWS_Xcp_00807]
[SRS_BSW_00327]	Error values naming convention	[SWS_Xcp_00763]
[SRS_BSW_00344]	BSW Modules shall support link-time configuration	[SWS_Xcp_00741]
[SRS_BSW_00345]	BSW Modules shall support pre-compile configuration	[SWS_Xcp_00742]
[SRS_BSW_00346]	All AUTOSAR Basic Software Modules shall provide at least a basic set of module files	[SWS_Xcp_00501]
[SRS_BSW_00358]	The return type of init() functions implemented by AUTOSAR Basic Software Modules shall be void	[SWS_Xcp_00803]
[SRS_BSW_00373]	The main processing function of each AUTOSAR Basic Software Module shall be named according the defined convention	[SWS_Xcp_00823]
[SRS_BSW_00374]	All Basic Software Modules shall provide a readable module vendor identification	[SWS_Xcp_00807]
[SRS_BSW_00379]	All software modules shall provide a module identifier in the header file and in the module XML description file.	[SWS_Xcp_00807]
[SRS_BSW_00380]	Configuration parameters being stored in memory shall be placed into separate c-files	[SWS_Xcp_00501]
[SRS_BSW_00383]	The Basic Software Module specifications shall specify which other configuration files from other modules they use at least in the description	[SWS_Xcp_00501]
[SRS_BSW_00402]	Each module shall provide version information	[SWS_Xcp_00807]
[SRS_BSW_00404]	BSW Modules shall support post-build configuration	[SWS_Xcp_00742]





Requirement	Description	Satisfied by
[SRS_BSW_00405]	BSW Modules shall support multiple configuration sets	[SWS_Xcp_00803]
[SRS_BSW_00407]	Each BSW module shall provide a function to read out the version information of a dedicated module implementation	[SWS_Xcp_00807]
[SRS_BSW_00411]	All AUTOSAR Basic Software Modules shall apply a naming rule for enabling/disabling the existence of the API	[SWS_Xcp_00807]
[SRS_BSW_00414]	Init functions shall have a pointer to a configuration structure as single parameter	[SWS_Xcp_00803]
[SRS_BSW_00419]	If a pre-compile time configuration parameter is implemented as <code>const</code> it should be placed into a separate c-file	[SWS_Xcp_00501]
[SRS_BSW_00424]	BSW module main processing functions shall not be allowed to enter a wait state	[SWS_Xcp_00823]
[SRS_BSW_00433]	Main processing functions are only allowed to be called from task bodies provided by the BSW Scheduler	[SWS_Xcp_00823]
[SRS_Xcp_29001]	The AUTOSAR XCP module shall be located above the bus interfaces / Socket Adaptor	[SWS_Xcp_00701]
[SRS_Xcp_29002]	The AUTOSAR XCP shall make use of the data transmit- and receive APIs of the Bus Interfaces	[SWS_Xcp_00712] [SWS_Xcp_00714] [SWS_Xcp_00720] [SWS_Xcp_00734]
[SRS_Xcp_29003]	The AUTOSAR XCP messages shall be identified by unique PDU-IDs	[SWS_Xcp_00702]
[SRS_Xcp_29004]	The XCP Specification Version 1.1 shall be used	[SWS_Xcp_00703]
[SRS_Xcp_29005]	XCP on CAN shall be supported	[SWS_Xcp_00713]
[SRS_Xcp_29006]	XCP on FlexRay shall be supported	[SWS_Xcp_00719]
[SRS_Xcp_29007]	XCP on Ethernet shall be supported	[SWS_Xcp_00733]
[SRS_Xcp_29008]	The code generator of the XCP Module shall generate the A2L IF_DATA section	[SWS_Xcp_00853]
[SRS_Xcp_29009]	The slave shall transfer the contents of the elements defined in each ODT of the DAQ-list to the master	[SWS_Xcp_00705]
[SRS_Xcp_29010]	Synchronous Data Stimulation shall be the inverse mode of Synchronous Data Acquisition	[SWS_Xcp_00707]
[SRS_Xcp_29012]	The XCP master shall already send the next request before having received the response on the previous request	[SWS_Xcp_00710]
[SRS_Xcp_29013]	It shall be possible to configure the DAQ Lists dynamically	[SWS_Xcp_00706]
[SRS_Xcp_29014]	It shall be possible to transmit a timestamp within the XCP packet	[SWS_Xcp_00709]





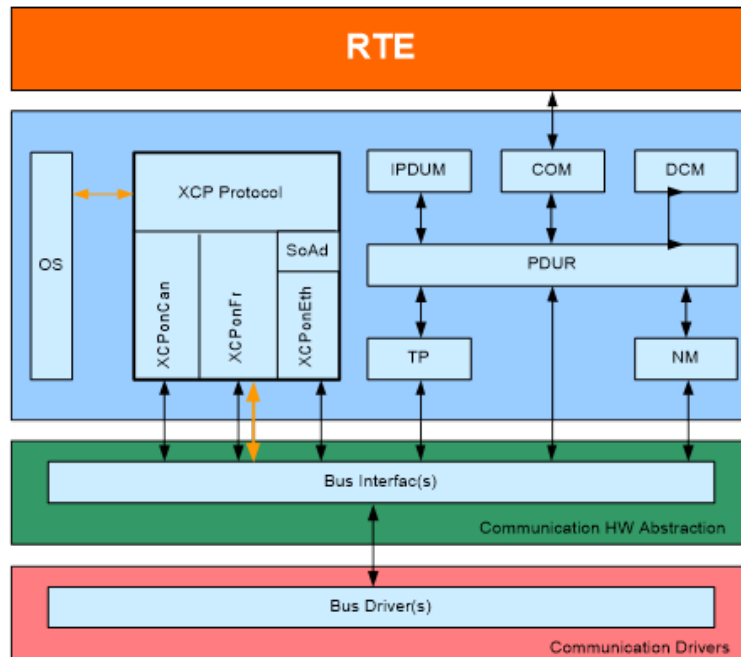
Requirement	Description	Satisfied by
[SRS_Xcp_29015]	It shall be possible to bypass data by making use of Synchronous Data Acquisition and Synchronous Data Stimulation simultaneously	[SWS_Xcp_00761]
[SRS_Xcp_29016]	The feature "Seed&Key" shall be used for protection handling purpose	[SWS_Xcp_00766]
[SRS_Xcp_29017]	The AUTOSAR XCP module shall implement an interface for initialization.	[SWS_Xcp_00803]
[SRS_Xcp_29018]	Page switching shall be supported	[SWS_Xcp_00852]
[SRS_Xcp_29019]	DAQ configuration storing with power-up data transfer (RESUME mode) shall be supported	[SWS_Xcp_00854]
[SRS_Xcp_29020]	Flash Programming for ECU development purposes	[SWS_Xcp_00855] [SWS_Xcp_00856]

**Table 6.1: RequirementsTracing**



## 7 Functional specification

The specification of the module XCP shall define all parameters and interfaces, which are required to use the ASAM XCP protocol specification within an AUTOSAR environment.



**Figure 7.1: Description**

Black arrows: Data Path (Signals/Pdus)

Orange arrows: Control Path (FlexRay Interface)

**[SWS\_Xcp\_00701]** [The AUTOSAR XCP Module be located above the bus specific Interfaces in case of FlexRay and Can. In case of Ethernet, the AUTOSAR XCP module shall be located above the Socket Adaptor.] ([SRS\\_Xcp\\_29001](#))

**[SWS\_Xcp\_00702]** [For transmitting and receiving of XCP messages, unique PDU-IDs shall be used.] ([SRS\\_Xcp\\_29003](#))

**[SWS\_Xcp\_00703]** [The AUTOSAR XCP Module shall support the ASAM XCP Specification Version 1.1, except for XCP on CAN where ASAM XCP Specification Version 1.2 shall be supported.] ([SRS\\_Xcp\\_29004](#))

**[SWS\_Xcp\_00705]** [The AUTOSAR XCP Module shall support the basic feature "Synchronous data acquisition (measurement)". Please refer to [3]] ([SRS\\_Xcp\\_29009](#))

**[SWS\_Xcp\_00706]** [The AUTOSAR XCP Module shall support the feature "Dynamic DAQ Configuration". according to [3]] ([SRS\\_Xcp\\_29013](#))

**[SWS\_Xcp\_00707]** [The AUTOSAR XCP Module shall support the basic feature "Synchronous data stimulation" according to [3]] ([SRS\\_Xcp\\_29010](#))

**[SWS\_Xcp\_00708]** [The AUTOSAR XCP Module shall support the basic feature "On-line memory calibration (read / write access) ", according to [3]] ()

**[SWS\_Xcp\_00709]** [The AUTOSAR XCP Module shall support the feature "Times-tamped Data Transfer", according to [3]] ([SRS\\_Xcp\\_29014](#))

**[SWS\_Xcp\_00768]** [The ECU local time shall be derived from the AUTOSAR OS.] ()

**[SWS\_Xcp\_00711]** [The AUTOSAR XCP Module shall support the feature "Block communication mode", according to [3]] ()

**[SWS\_Xcp\_00761]** [The AUTOSAR XCP Module shall support the feature "Bypassing", according to [3]] ([SRS\\_Xcp\\_29015](#))

**[SWS\_Xcp\_00766]** [The AUTOSAR XCP Module shall support the feature "Seed & Key" according to [3]] ([SRS\\_Xcp\\_29016](#))

**[SWS\_Xcp\_00712]** [For sending and receiving of calibration data, the sending and receiving APIs specified within the AUTOSAR BSW Bus Interfaces (FlexRay Interface, CAN Interface, TCP/IP Socket Adaptor) shall be used. Please refer to chapter 7.1, 7.2 and 7.3.] ([SRS\\_Xcp\\_29002](#))

**[SWS\_Xcp\_00852]** [The AUTOSAR XCP Module shall support the feature "Page switching", according to [3]] ([SRS\\_Xcp\\_29018](#))

**[SWS\_Xcp\_00853]** [The code generator of the XCP Module shall generate the A2L IF\_DATA section, based on the configuration of XCP] ([SRS\\_Xcp\\_29008](#))

**[SWS\_Xcp\_00854]** [The AUTOSAR XCP Module shall support the feature "Power-Up data transfer (RESUME MODE)", according to [3]] ([SRS\\_Xcp\\_29019](#))

**[SWS\_Xcp\_00855]** [The AUTOSAR XCP Module shall support the flash programming (PGM) according to [3]] ([SRS\\_Xcp\\_29020](#))

**[SWS\_Xcp\_00856]** [Indication the end of a programming sequence is supported using the optional command "PROGRAM\_RESET", where the slave will go to disconnected state but without forcing a device reset] ([SRS\\_Xcp\\_29020](#))

**[SWS\_Xcp\_00859]** [The XCP module shall wait for the Xcp\_<Lo>TxConfirmation (positive or negative) after each call to <Lo>\_Transmit to avoid overwriting previously transmitted data.] ()

## 7.1 XCP on CAN

**[SWS\_Xcp\_00713]** [The AUTOSAR XCP Module shall support the CAN communications bus according to [6]] ([SRS\\_Xcp\\_29005](#))

**[SWS\_Xcp\_00714]** [XCP data sent and received via CAN, the PDUs have to be transmitted and received using the transmitting and receive APIs provided by the AUTOSAR CAN Interface, according to [7]] ([SRS\\_Xcp\\_29002](#))

**[SWS\_Xcp\_00715]** [For sending and receiving XCP data via CAN, at least two different CAN identifiers have to be configured to be used by XCP.] ()

**[SWS\_Xcp\_00716]** [Performance information shall be exchanged between the XCP master and XCP slave using the parameters according to [6].] ()

**[SWS\_Xcp\_00718]** [The XCP Module shall support the GET\_SLAVE\_ID command according to [6].] ()

## 7.2 XCP on FlexRay

**[SWS\_Xcp\_00719]** [The AUTOSAR XCP Module shall support the FlexRay communications bus according to [8].] ([SRS\\_Xcp\\_29006](#))

**[SWS\_Xcp\_00720]** [XCP data sent and received via FlexRay, the PDUs have to be transmitted and received using the transmit and receive APIs provided by the AUTOSAR FlexRay Interface according to [9].] ([SRS\\_Xcp\\_29002](#))

**[SWS\_Xcp\_00721]** [All XCP on FlexRay LPDUs always are event driven. Please refer to Chapter 1.1.2 "FlexRay Frame Type" of [8].] ()

**[SWS\_Xcp\_00722]** [The hardware buffers (of the FlexRay Communication Controller) XCP uses for data transmission and reception are assigned exclusively to the XCP module.] ()

Note:

This restriction prevents disturbances of ongoing FlexRay communication.

**[SWS\_Xcp\_00723]** [The usage of FlexRay Communication Controller's hardware buffers shall be configured by the corresponding parameters according to [8].] ()

**[SWS\_Xcp\_00724]** [The FlexRay PDU length used by the AUTOSAR XCP module shall be set using the corresponding parameters according to [8].] ()

**[SWS\_Xcp\_00725]** [LPDU\_IDs which shall be routed to the AUTOSAR XCP module (using the AUTOSAR Bus Interface) have to be defined by the system designer.] ()

**[SWS\_Xcp\_00726]** [The ASAM MCD 2MC description file (i.e. A2L file) describes to which extent the XCP-dedicated buffers of a specific slave can be configured for XCP communication.] ()

**[SWS\_Xcp\_00728]** [The XCP master gets the information about the XCP dedicated FlexRay Communication Controller buffers from the ASAM MCD 2MC description file.] ()

**[SWS\_Xcp\_00729]** [Limitations due to the usage of multiple XCP slaves on the FlexRay communications bus shall be taken into consideration by the system designer. Please refer to [8].] ()

**[SWS\_Xcp\_00730]** [Depending upon the requirements on sequencing correctness, alignment and net data throughput, different header types are possible. Please refer to Chapter 1.4.1 "Header" of [8]]. ()

**[SWS\_Xcp\_00731]** [For XCP on FlexRay, the Tail consists of a Control Field containing optional FILL bytes according to [8]]. ()

**[SWS\_Xcp\_00732]** [The AUTOSAR XCP module shall be able to pack multiple XCP messages into one FlexRay Frame according to [8]]. ()

### 7.3 XCP on Ethernet

**[SWS\_Xcp\_00733]** [The AUTOSAR XCP Module shall support the Ethernet communications bus according to [10]] (*SRS\_Xcp\_29007*)

**[SWS\_Xcp\_00734]** [XCP data sent and received via Ethernet, the PDUs have to be transmitted and received using the transmitting and receive APIs provided by the AUTOSAR Socket Adaptor according to [11]]. (*SRS\_Xcp\_29002*)

**[SWS\_Xcp\_00735]** [The AUTOSAR XCP slave connected by Ethernet and TCP/IP or UDP/IP is addressed by its IP Address and Port number.]. ()

**[SWS\_Xcp\_00736]** [The AUTOSAR XCP slave only accepts one connection at the time.]. ()

**[SWS\_Xcp\_00737]** [If the socket is closed while in XCP connected state, the slave device will perform an XCP disconnect, which means that all data acquisition will be stopped.]. ()

**[SWS\_Xcp\_00738]** [The addressing scheme is defined according to [10]]. ()

**[SWS\_Xcp\_00739]** [The header and tail of an XCP on Ethernet message have to be set according to [10]]. ()

**[SWS\_Xcp\_00740]** [The upper performance limit depends on the protocol stack of the host system. The corresponding parameters defined according to [10] have to be set.]. ()

**[SWS\_Xcp\_00710]** [The AUTOSAR XCP Module shall support the feature "Interleaved communication mode", according to [3]]. (*SRS\_Xcp\_29012*)

### 7.4 General Requirements

**[SWS\_Xcp\_00741]** [Link-time and post-build-time configuration data shall be implemented as read-only data structures. Link-time configuration data shall be immediately

referenced by the implementation, the start-address of post-build-time configuration data shall be passed during module initialization] ([SRS\\_BSW\\_00344](#))

[SWS\_Xcp\_00742] [The XCP module shall support pre-compile time, link-time and post-build-time configuration.] ([SRS\\_BSW\\_00404](#), [SRS\\_BSW\\_00345](#))

## 7.5 Error Classification

[SWS\_Xcp\_00763] [The error values and EventIds are named in capital letters according to the scheme XCP\_E\_<NAME>, where NAME describes the error/EventId and may consist of several words separated by underscores.] ([SRS\\_BSW\\_00327](#))

### 7.5.1 Development Errors

[SWS\_Xcp\_00857] Definiton of development errors in module Xcp [

<i>Type of error</i>	<i>Related error code</i>	<i>Error value</i>
Module not initialized	XCP_E_UNINIT	0x02
API call with wrong PDU ID	CP_E_INVALID_PDUID	0x03
Initialization of XCP failed	XCP_E_INIT_FAILED	0x04
Null pointer has been passed as an argument	XCP_E_PARAM_POINTER	0x12

]()

### 7.5.2 Runtime Errors

There are no runtime errors.

### 7.5.3 Transient Faults

There are no transient faults.

### 7.5.4 Production Errors

There are no production errors.

### 7.5.5 Extended Production Errors

There are no extended production errors.

## 7.6 Version checking

For details refer to the chapter 5.1.8 "Version Check" in SWS\_BSWGeneral.

## 7.7 Security Events

The module does not report security events.

## 8 API specification

### 8.1 Imported types

In this chapter all types included from the following modules are listed:

#### [SWS\_Xcp\_00801] Definition of imported datatypes of module Xcp [

<i>Module</i>	<i>Header File</i>	<i>Imported Type</i>
ComStack_Types	ComStack_Types.h	NetworkHandleType
	ComStack_Types.h	PduIdType
	ComStack_Types.h	PduInfoType
	ComStack_Types.h	PduLengthType
Fr	Fr_GeneralTypes.h	Fr_ChannelType
Os	Os.h	StatusType
	Os.h	TickRefType
	Os.h	TickType
	Rte_Os_Type.h	CounterType
Std	Std_Types.h	Std_ReturnType
	Std_Types.h	Std_VersionInfoType

]()

### 8.2 Type definitions

#### 8.2.1 Xcp\_ConfigType

#### [SWS\_Xcp\_00845] Definition of datatype Xcp\_ConfigType [

<b>Name</b>	Xcp_ConfigType	
<b>Kind</b>	Structure	
<b>Elements</b>	implementation specific	
	<b>Type</b>	–
	<b>Comment</b>	The content of the initialization data structure is implementation specific
<b>Description</b>	This is the type of the data structure containing the initialization data for XCP.	
<b>Available via</b>	Xcp.h	

]()

## 8.2.2 Xcp\_Transmission Mode Type

### [SWS\_Xcp\_00846] Definition of datatype Xcp\_TransmissionModeType [

<b>Name</b>	Xcp_TransmissionModeType		
<b>Kind</b>	Enumeration		
<b>Range</b>	XCP_TX_OFF	0x00	Transmission Disabled
	XCP_TX_ON	0x01	Transmission Enabled
<b>Description</b>	Handles the enabling and disabling of the transmission mode		
<b>Available via</b>	Xcp.h		

]()

## 8.3 Function definitions

This is a list of functions provided for upper layer modules.

### 8.3.1 Xcp\_Init

#### [SWS\_Xcp\_00803] Definition of API function Xcp\_Init [

<b>Service Name</b>	Xcp_Init		
<b>Syntax</b>	<pre>void Xcp_Init (     const Xcp_ConfigType* Xcp_ConfigPtr )</pre>		
<b>Service ID [hex]</b>	0x00		
<b>Sync/Async</b>	Synchronous		
<b>Reentrancy</b>	Non Reentrant		
<b>Parameters (in)</b>	Xcp_ConfigPtr	Pointer to a selected configuration structure	
<b>Parameters (inout)</b>	None		
<b>Parameters (out)</b>	None		
<b>Return value</b>	void	-	
<b>Description</b>	This service initializes interfaces and variables of the AUTOSAR XCP layer.		
<b>Available via</b>	Xcp.h		

] ([SRS\\_BSW\\_00405](#), [SRS\\_BSW\\_00101](#), [SRS\\_BSW\\_00358](#), [SRS\\_BSW\\_00414](#), [SRS\\_Xcp\\_29017](#))

[SWS\_Xcp\_00802] [The function `Xcp_Init` shall internally store the configuration address to enable subsequent API calls to access the configuration]()



### 8.3.2 Xcp\_GetVersionInfo

#### [SWS\_Xcp\_00807] Definition of API function Xcp\_GetVersionInfo [

<b>Service Name</b>	Xcp_GetVersionInfo	
<b>Syntax</b>	void Xcp_GetVersionInfo ( Std_VersionInfoType* versioninfo )	
<b>Service ID [hex]</b>	0x01	
<b>Sync/Async</b>	Synchronous	
<b>Reentrancy</b>	Reentrant	
<b>Parameters (in)</b>	None	
<b>Parameters (inout)</b>	None	
<b>Parameters (out)</b>	versioninfo	Pointer to where to store the version information of this module.
<b>Return value</b>	void	–
<b>Description</b>	Returns the version information of this module.	
<b>Available via</b>	Xcp.h	

]([SRS\\_BSW\\_00402](#), [SRS\\_BSW\\_00407](#), [SRS\\_BSW\\_00411](#), [SRS\\_BSW\\_00374](#), [SRS\\_BSW\\_00379](#), [SRS\\_BSW\\_00003](#), [SRS\\_BSW\\_00318](#))

[SWS\_Xcp\_00825] [If development error detection for the Xcp module is enabled, then the function [Xcp\\_GetVersionInfo](#) shall check whether the parameter VersioninfoPtr is a NULL pointer (NULL\_PTR). If VersioninfoPtr is a NULL pointer, then the function [Xcp\\_GetVersionInfo](#) shall raise the development error XCP\_E\_PARAM\_POINTER and return.]()

### 8.3.3 Xcp\_SetTransmissionMode

#### [SWS\_Xcp\_00844] Definition of callback function Xcp\_SetTransmissionMode [

<b>Service Name</b>	Xcp_SetTransmissionMode	
<b>Syntax</b>	void Xcp_SetTransmissionMode ( NetworkHandleType Channel, Xcp_TransmissionModeType Mode )	
<b>Service ID [hex]</b>	0x05	
<b>Sync/Async</b>	Synchronous	
<b>Reentrancy</b>	Non Reentrant	
<b>Parameters (in)</b>	Channel	The Network channel for the used bus communication
	Mode	Enabled or disabled Transmission mode Parameters
<b>Parameters (inout)</b>	None	
<b>Parameters (out)</b>	None	
<b>Return value</b>	None	
<b>Description</b>	This API is used to turn on and off of the TX capabilities of used communication bus channel in XCP module.	
<b>Available via</b>	Xcp.h	

]()

[SWS\_Xcp\_00848] [The XCP module shall provide this service only if XCP\_SUPPRESS\_TX\_SUPPORT (see [ECUC\_Xcp\_00169]) equals TRUE.]()

[SWS\_Xcp\_00849] [If Xcp\_SetTransmissionMode(Channel, Mode) is called and parameter Mode equals XCP\_TX\_OFF, all TxPDUs which are assigned to Channel shall not be transmitted.]()

Note: It could be derived from <Bus>If configuration and the global PDU parameter, to which specific communication channel the PDU is assigned to.

[SWS\_Xcp\_00850] [If Xcp\_SetTransmissionMode(Channel, Mode) is called and parameter Mode equals XCP\_TX\_ON, all TxPDUs which are assigned to Channel shall be able to be transmitted.]()

## 8.4 Callback notifications

[SWS\_Xcp\_00836] [This is a list of functions provided for other modules.]()

### 8.4.1 Xcp\_<Lo>RxIndication

[SWS\_Xcp\_00813] Definition of callback function Xcp\_<Lo>RxIndication [

<b>Service Name</b>	Xcp_<Lo>RxIndication	
<b>Syntax</b>	<pre>void Xcp_&lt;Lo&gt;RxIndication (     PduIdType RxPduId,     const PduInfoType* PduInfoPtr )</pre>	
<b>Service ID [hex]</b>	0x42	
<b>Sync/Async</b>	Synchronous	
<b>Reentrancy</b>	Reentrant for different Pdulds. Non reentrant for the same Pduldd.	
<b>Parameters (in)</b>	RxPduldd	ID of the received PDU.
	PduInfoPtr	Contains the length (SduLength) of the received PDU, a pointer to a buffer (SduDataPtr) containing the PDU, and the MetaData related to this PDU.
<b>Parameters (inout)</b>	None	
<b>Parameters (out)</b>	None	
<b>Return value</b>	None	
<b>Description</b>	Indication of a received PDU from a lower layer communication interface module.	
<b>Available via</b>	Xcp.h	

]() The callback function Xcp\_<Lo>RxIndication is called by the Bus Interfaces, Ethernet Socket Adaptor or CDD and is implemented by the Xcp module.

[SWS\_Xcp\_00847] [The callback function Xcp\_<Lo>RxIndication shall inform the DET, if development error detection is enabled (XCP\_DEV\_ERROR\_DETECT is set to TRUE) and if function call has failed because of the following reasons:

- Xcp was not initialized (XCP\_E\_UNINIT)

- PduInfoPtr equals NULL\_PTR (XCP\_E\_PARAM\_POINTER)
- Invalid PDUID (XCP\_E\_INVALID\_PDUID)

]()

The function `Xcp_<Lo>RxIndication` shall be called by the Xcp module's environment in an interrupt context.

## 8.4.2 Xcp\_<Lo>TxConfirmation

### [SWS\_Xcp\_00814] Definition of callback function Xcp\_<Lo>TxConfirmation [

<b>Service Name</b>	Xcp_<Lo>TxConfirmation	
<b>Syntax</b>	<pre>void Xcp_&lt;Lo&gt;TxConfirmation (     PduIdType TxPduId,     Std_ReturnType result )</pre>	
<b>Service ID [hex]</b>	0x40	
<b>Sync/Async</b>	Synchronous	
<b>Reentrancy</b>	Reentrant for different PduIds. Non reentrant for the same PduId.	
<b>Parameters (in)</b>	TxPduId	ID of the PDU that has been transmitted.
	result	E_OK: The PDU was transmitted. E_NOT_OK: Transmission of the PDU failed.
<b>Parameters (inout)</b>	None	
<b>Parameters (out)</b>	None	
<b>Return value</b>	None	
<b>Description</b>	The lower layer communication interface module confirms the transmission of a PDU, or the failure to transmit a PDU.	
<b>Available via</b>	Xcp.h	

]() Note:

The callback function `Xcp_<Lo>TxConfirmation` is called by the Bus Interfaces, Ethernet Socket Adaptor or CDD and is implemented by the Xcp module.

**[SWS\_Xcp\_00840]** [If development error detection for the XCP module is enabled: if the function `Xcp_<Lo>TxConfirmation` is called before the XCP was initialized successfully, the function `Xcp_<Lo>TxConfirmation` shall raise the development error XCP\_E\_UNINIT and return.]()

**[SWS\_Xcp\_00841]** [Caveats of `Xcp_<Lo>TxConfirmation`:

- The call context is either on interrupt level (interrupt mode) or on task level
- The Xcp module is initialized correctly.

]()

### 8.4.3 Xcp\_<Lo>TriggerTransmit

#### [SWS\_Xcp\_00835] Definition of callback function Xcp\_<Lo>TriggerTransmit [

<b>Service Name</b>	Xcp_<Lo>TriggerTransmit	
<b>Syntax</b>	Std_ReturnType Xcp_<Lo>TriggerTransmit ( PduIdType TxPduId, PduInfoType* PduInfoPtr )	
<b>Service ID [hex]</b>	0x41	
<b>Sync/Async</b>	Synchronous	
<b>Reentrancy</b>	Reentrant for different PduIds. Non reentrant for the same PduId.	
<b>Parameters (in)</b>	TxPduId	ID of the SDU that is requested to be transmitted.
<b>Parameters (inout)</b>	PduInfoPtr	Contains a pointer to a buffer (SduDataPtr) to where the SDU data shall be copied, and the available buffer size in SduLength. On return, the service will indicate the length of the copied SDU data in SduLength.
<b>Parameters (out)</b>	None	
<b>Return value</b>	Std_ReturnType	E_OK: SDU has been copied and SduLength indicates the number of copied bytes. E_NOT_OK: No SDU data has been copied. PduInfoPtr must not be used since it may contain a NULL pointer or point to invalid data.
<b>Description</b>	Within this API, the upper layer module (called module) shall check whether the available data fits into the buffer size reported by PduInfoPtr->SduLength. If it fits, it shall copy its data into the buffer provided by PduInfoPtr->SduDataPtr and update the length of the actual copied data in PduInfoPtr->SduLength. If not, it returns E_NOT_OK without changing PduInfoPtr.	
<b>Available via</b>	Xcp.h	

]() Note:

The callback function [Xcp\\_<Lo>TriggerTransmit](#) is called by the Bus Interfaces, Ethernet Socket Adaptor or CDD and is implemented by the Xcp module.

[SWS\_Xcp\_00842] [If development error detection for the XCP module is enabled: if the function

[Xcp\\_<Lo>TriggerTransmit](#) is called before the XCP was initialized successfully, the function [Xcp\\_<Lo>TriggerTransmit](#) shall raise the development error XCP\_E\_UNINIT and return E\_NOT\_OK.]()

[SWS\_Xcp\_00843] [Caveats of [Xcp\\_<Lo>TriggerTransmit](#):

- The call context is either on interrupt level (interrupt mode) or on task level
- The Xcp module is initialized correctly.

]()

## 8.5 Scheduled functions

The functions are called directly by Basic Software Scheduler. The following functions shall have no return value and no parameter. All functions shall be non reentrant.

## 8.5.1 Xcp\_MainFunction

### [SWS\_Xcp\_00823] Definition of scheduled function Xcp\_MainFunction [

<b>Service Name</b>	Xcp_MainFunction
<b>Syntax</b>	void Xcp_MainFunction ( void )
<b>Service ID [hex]</b>	0x04
<b>Description</b>	Scheduled function of the XCP module
<b>Available via</b>	SchM_Xcp.h

] ([SRS\\_BSW\\_00424](#), [SRS\\_BSW\\_00433](#), [SRS\\_BSW\\_00373](#))

[SWS\_Xcp\_00824] [The XCP Main Function shall be called cyclically.] ()

## 8.6 Expected interfaces

In this chapter all interfaces required from other modules are listed.

### 8.6.1 Mandatory interfaces

#### [SWS\_Xcp\_91001] Definition of mandatory interfaces in module Xcp [

API Function	Header File	Description
There are no mandatory interfaces.		

] ()

### 8.6.2 Optional interfaces

#### [SWS\_Xcp\_00832] Definition of optional interfaces in module Xcp [

API Function	Header File	Description
CanLf_Transmit	CanLf.h	Requests transmission of a PDU.
Det_ReportError	Det.h	Service to report development errors.
Frlf_DisableLPdu	Frlf.h	Wraps the FlexRay Driver Function Fr_DisableLPdu. It disables the hardware resource of an LPdu for transmission/reception.
Frlf_ReconfigLPdu	Frlf.h	Calls the FlexRay Driver's API Fr_ReconfigLPdu. The enum value "FR_CHANNEL_AB" shall not be used.
Frlf_Transmit	Frlf.h	Requests transmission of a PDU.





<b>API Function</b>	<b>Header File</b>	<b>Description</b>
GetCounterValue	Os.h	This service reads the current count value of a counter (returning either the hardware timer ticks if counter is driven by hardware or the software ticks when user drives counter).
GetElapsedValue	Os.h	This service gets the number of ticks between the current tick value and a previously read tick value.
SoAd_IfTransmit	SoAd.h	Requests transmission of a PDU.

]()

### 8.6.3 Configurable interfaces

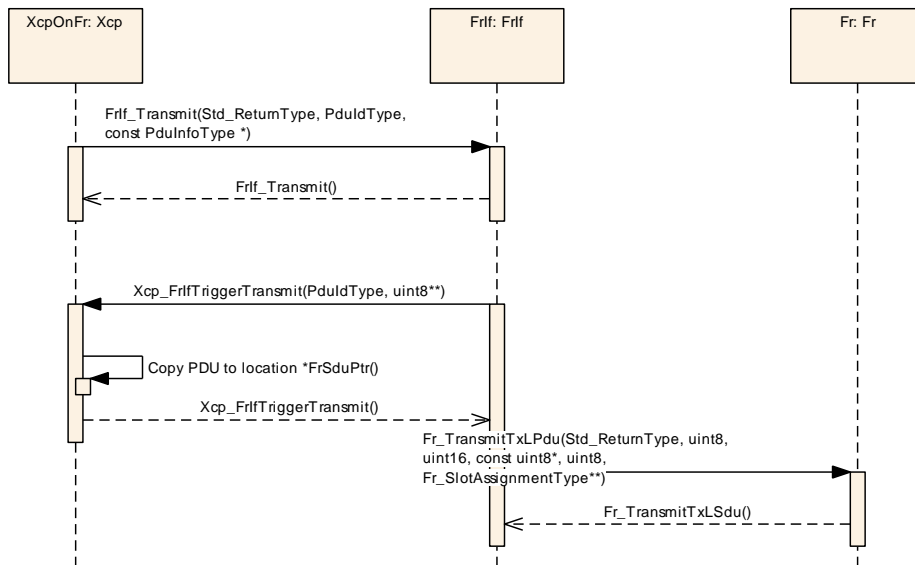
In this chapter, all interfaces are listed where the target function could be configured. The target function is usually a call-back function. The names of these kind of interfaces is not fixed because they are configurable.

The XCP module offers configurable interfaces to be used by Complex Driver(s).

## 9 Sequence diagrams

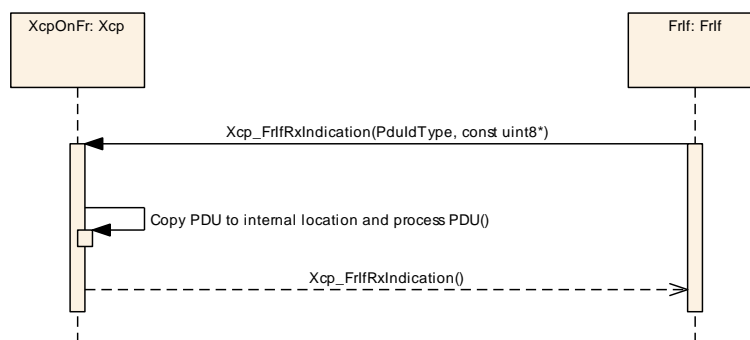
### 9.1 XCP on FlexRay

#### 9.1.1 Xcp on FlexRay Transmit



**Figure 9.1: Xcp On FlexRay Transmit**

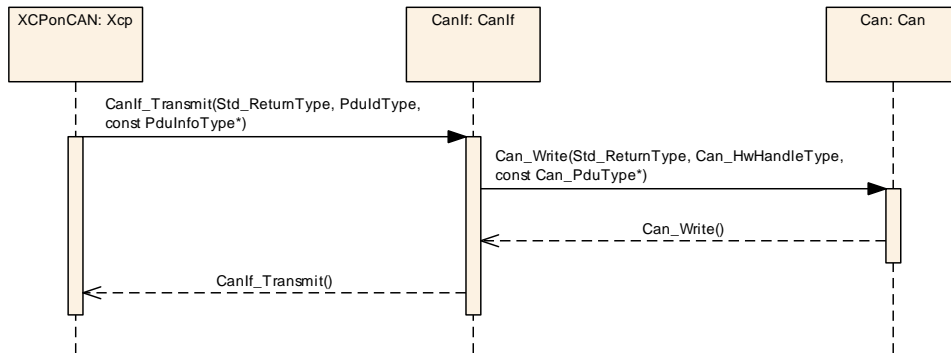
#### 9.1.2 Xcp on FlexRay Receive Indication



**Figure 9.2: Xcp on FlexRay Receive Indication**

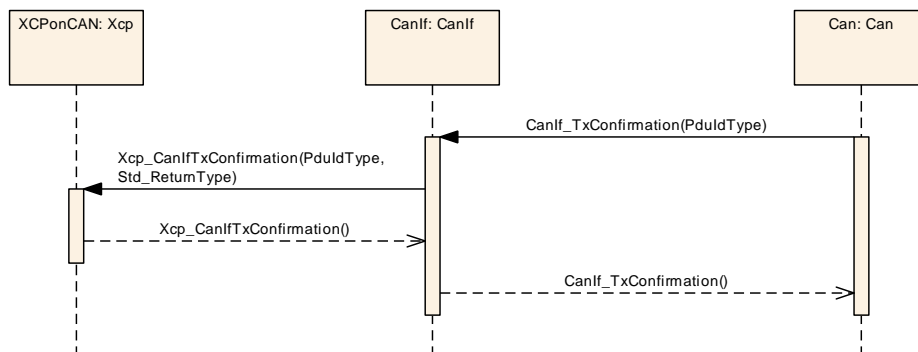
## 9.2 XCP on CAN

### 9.2.1 Xcp on CAN Transmit



**Figure 9.3: Xcp on Can Transmit**

### 9.2.2 Xcp on CAN Transmit Confirmation



**Figure 9.4: Xcp on CAN Transmit Confirmation**



### 9.2.3 Xcp on CAN Receive Indication

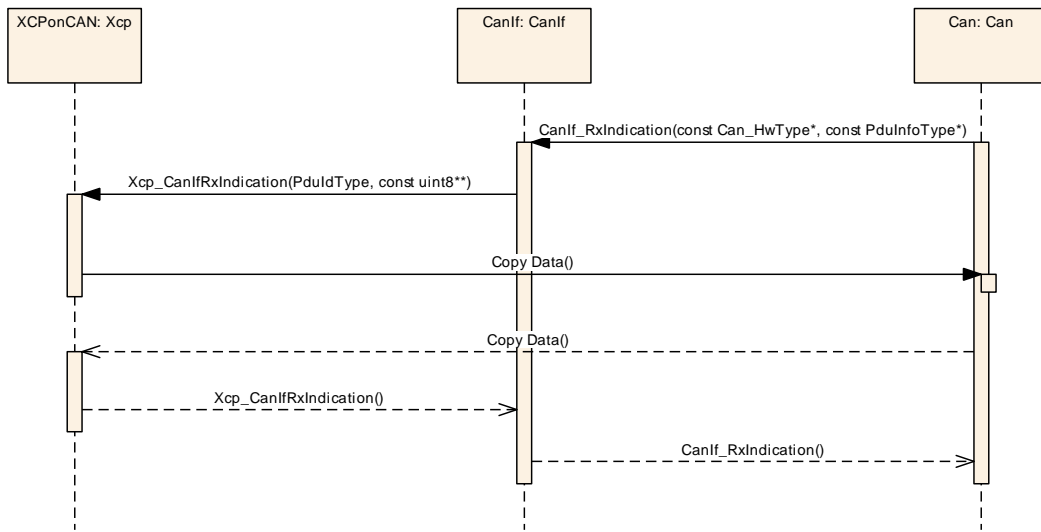


Figure 9.5: Xcp on CAN Receive Indication

## 9.3 XCP on Ethernet

### 9.3.1 Xcp on Ethernet Receive Indication

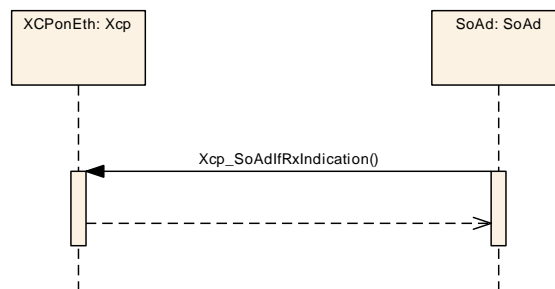


Figure 9.6: Xcp on Ethernet Receive Indication

## 10 Configuration specification

In general, this chapter defines configuration parameters and their clustering into containers. In order to support the specification Chapter 10.1 describes fundamentals. It also specifies a template (table) you shall use for the parameter specification. We intend to leave Chapter 10.1 in the specification to guarantee comprehension.

Chapter 10.2 specifies the structure (containers) and the parameters of the module XCP.

Chapter 10.3 specifies published information of the module XCP.

### 10.1 How to read this chapter

For details refer to the chapter 10.1 “Introduction to configuration specification” in [2].

### 10.2 Containers and configuration parameters

The following chapters summarize all configuration parameters. The detailed meanings of the parameters describe Chapter 7 and Chapter 8.

**[SWS\_Xcp\_00102]** [The listed configuration items can be derived from a network description database, which is based on the EcuConfigurationTemplate. The configuration tool shall extract all information to configure the XCP.] ([SRS\\_BSW\\_00159](#))

**[SWS\_Xcp\_00103]** [The configuration tool must check the consistency of the configuration at configuration time.] ([SRS\\_BSW\\_00167](#))

**[SWS\_Xcp\_00104]** [Configuration rules and constraints for plausibility checks shall be performed during configuration time, wherever possible.] ([SRS\\_BSW\\_00167](#))

**[SWS\_Xcp\_00105]** [These dependencies between FlexRay Interface and FlexRay Driver configuration must be provided at configuration time by the configuration tools.] ([SRS\\_BSW\\_00167](#))

#### 10.2.1 Xcp

<b>SWS Item</b>	[ECUC_Xcp_00182]
<b>Module Name</b>	Xcp
<b>Description</b>	Configuration of the XCP module
<b>Post-Build Variant Support</b>	true
<b>Supported Config Variants</b>	VARIANT-POST-BUILD, VARIANT-PRE-COMPILE

Included Containers		
Container Name	Multiplicity	Scope / Dependency
<a href="#">XcpConfig</a>	1	This container contains the configuration parameters and sub containers of the AUTOSAR Xcp module.
<a href="#">XcpGeneral</a>	1	This container contains the general configuration parameters of the XCP.

## 10.2.2 XcpGeneral

<b>SWS Item</b>	[ECUC_Xcp_00001]
<b>Container Name</b>	XcpGeneral
<b>Parent Container</b>	<a href="#">Xcp</a>
<b>Description</b>	This container contains the general configuration parameters of the XCP.
<b>Configuration Parameters</b>	

<b>SWS Item</b>	[ECUC_Xcp_00164]		
<b>Parameter Name</b>	XcpDaqConfigType		
<b>Parent Container</b>	<a href="#">XcpGeneral</a>		
<b>Description</b>	Sets the DAQ_CONFIG_TYPE bit within the DAQ_PROPERTIES parameter to "static" or to "dynamic". If DAQ_STATIC is selected, the DAQ_CONFIG_TYPE bit is set to "0". If DAQ_DYNAMIC is selected, the DAQ_CONFIG_TYPE bit is set to "1".		
<b>Multiplicity</b>	1		
<b>Type</b>	EcucEnumerationParamDef		
<b>Range</b>	DAQ_DYNAMIC	If DAQ_DYNAMIC is selected, the DAQ_CONFIG_TYPE bit is set to '1'	
	DAQ_STATIC	If DAQ_STATIC is selected, the DAQ_CONFIG_TYPE bit is set to '0'	
<b>Post-Build Variant Value</b>	false		
<b>Value Configuration Class</b>	<b>Pre-compile time</b>	X	All Variants
	<b>Link time</b>	–	
	<b>Post-build time</b>	–	
<b>Scope / Dependency</b>	scope: ECU dependency: If DAQ_CONFIG_TYPE = dynamic, MAX_DAQ equals MIN_DAQ+DAQ_COUNT.		

<b>SWS Item</b>	[ECUC_Xcp_00012]		
<b>Parameter Name</b>	XcpDaqCount		
<b>Parent Container</b>	<a href="#">XcpGeneral</a>		
<b>Description</b>	Indicates the number of DAQ lists for dynamic configuration.		
<b>Multiplicity</b>	1		
<b>Type</b>	EcucIntegerParamDef		
<b>Range</b>	0 .. 65535		
<b>Default value</b>	–		
<b>Post-Build Variant Value</b>	false		
<b>Value Configuration Class</b>	<b>Pre-compile time</b>	X	VARIANT-PRE-COMPILE
	<b>Link time</b>	–	
	<b>Post-build time</b>	–	





<b>Scope / Dependency</b>	scope: ECU dependency: This parameter is available only if XcpDaqConfigType is set to "1" i.e DAQ_DYNAMIC
---------------------------	--

<b>SWS Item</b>	<b>[ECUC_Xcp_00003]</b>		
<b>Parameter Name</b>	XcpDevErrorDetect		
<b>Parent Container</b>	<a href="#">XcpGeneral</a>		
<b>Description</b>	Switches the development error detection and notification on or off. <ul style="list-style-type: none"> <li>• true: detection and notification is enabled.</li> <li>• false: detection and notification is disabled.</li> </ul>		
<b>Multiplicity</b>	1		
<b>Type</b>	EcucBooleanParamDef		
<b>Default value</b>	false		
<b>Post-Build Variant Value</b>	false		
<b>Value Configuration Class</b>	<b>Pre-compile time</b>	X	All Variants
	<b>Link time</b>	–	
	<b>Post-build time</b>	–	
<b>Scope / Dependency</b>	scope: local		

<b>SWS Item</b>	<b>[ECUC_Xcp_00181]</b>		
<b>Parameter Name</b>	XcpFlashProgrammingEnabled		
<b>Parent Container</b>	<a href="#">XcpGeneral</a>		
<b>Description</b>	Enabling of XCP Flash programming functionality		
<b>Multiplicity</b>	1		
<b>Type</b>	EcucBooleanParamDef		
<b>Default value</b>	–		
<b>Post-Build Variant Value</b>	false		
<b>Value Configuration Class</b>	<b>Pre-compile time</b>	X	All Variants
	<b>Link time</b>	–	
	<b>Post-build time</b>	–	
<b>Scope / Dependency</b>	scope: local		

<b>SWS Item</b>	<b>[ECUC_Xcp_00170]</b>		
<b>Parameter Name</b>	XcpIdentificationFieldType		
<b>Parent Container</b>	<a href="#">XcpGeneral</a>		
<b>Description</b>	Type of Identification Field the slave will use when transferring DAQ Packets to the master. The master has to use the same Type of Identification Field when transferring STIM Packets to the slave.		
<b>Multiplicity</b>	1		
<b>Type</b>	EcucEnumerationParamDef		
<b>Range</b>	ABSOLUTE	Absolute ODT number	
	RELATIVE_BYTE	Relative ODT number, absolute DAQ list number (BYTE)	
	RELATIVE_WORD	Relative ODT number, absolute DAQ list number (WORD)	
	RELATIVE_WORD_ALIGNED	Relative ODT number, absolute DAQ list number (WORD, aligned).	
<b>Post-Build Variant Value</b>	false		





<b>Value Configuration Class</b>	<b>Pre-compile time</b>	X	All Variants
	<b>Link time</b>	–	
	<b>Post-build time</b>	–	
<b>Scope / Dependency</b>	scope: local		

<b>SWS Item</b>	[ECUC_Xcp_00014]		
<b>Parameter Name</b>	XcpMainFunctionPeriod		
<b>Parent Container</b>	<a href="#">XcpGeneral</a>		
<b>Description</b>	The XCP does not require this information but the BSW scheduler, which invokes the main function, needs it in order to plan its tasks.		
<b>Multiplicity</b>	1		
<b>Type</b>	EcucFloatParamDef		
<b>Range</b>	]0 .. INF[		
<b>Default value</b>	–		
<b>Post-Build Variant Value</b>	false		
<b>Value Configuration Class</b>	<b>Pre-compile time</b>	X	All Variants
	<b>Link time</b>	–	
	<b>Post-build time</b>	–	
<b>Scope / Dependency</b>	scope: local		

<b>SWS Item</b>	[ECUC_Xcp_00004]		
<b>Parameter Name</b>	XcpMaxCto		
<b>Parent Container</b>	<a href="#">XcpGeneral</a>		
<b>Description</b>	MAX_CTO shows the maximum length of a CTO packet in bytes.		
<b>Multiplicity</b>	1		
<b>Type</b>	EcucIntegerParamDef		
<b>Range</b>	8 .. 255		
<b>Default value</b>	–		
<b>Post-Build Variant Value</b>	false		
<b>Value Configuration Class</b>	<b>Pre-compile time</b>	X	All Variants
	<b>Link time</b>	–	
	<b>Post-build time</b>	–	
<b>Scope / Dependency</b>	scope: local		

<b>SWS Item</b>	[ECUC_Xcp_00005]		
<b>Parameter Name</b>	XcpMaxDto		
<b>Parent Container</b>	<a href="#">XcpGeneral</a>		
<b>Description</b>	MAX_DTO shows the maximum length of a DTO packet in bytes.		
<b>Multiplicity</b>	1		
<b>Type</b>	EcucIntegerParamDef		
<b>Range</b>	8 .. 65535		
<b>Default value</b>	–		
<b>Post-Build Variant Value</b>	false		
<b>Value Configuration Class</b>	<b>Pre-compile time</b>	X	All Variants
	<b>Link time</b>	–	
	<b>Post-build time</b>	–	
<b>Scope / Dependency</b>	scope: local		

<b>SWS Item</b>	<b>[ECUC_Xcp_00011]</b>		
<b>Parameter Name</b>	XcpMaxEventChannel		
<b>Parent Container</b>	<a href="#">XcpGeneral</a>		
<b>Description</b>	–		
<b>Multiplicity</b>	1		
<b>Type</b>	EcucIntegerParamDef		
<b>Range</b>	0 .. 65535		
<b>Default value</b>	–		
<b>Post-Build Variant Value</b>	false		
<b>Value Configuration Class</b>	<b>Pre-compile time</b>	X	All Variants
	<b>Link time</b>	–	
	<b>Post-build time</b>	–	
<b>Scope / Dependency</b>	scope: ECU		

<b>SWS Item</b>	<b>[ECUC_Xcp_00013]</b>		
<b>Parameter Name</b>	XcpMinDaq		
<b>Parent Container</b>	<a href="#">XcpGeneral</a>		
<b>Description</b>	Indicates the number of predefined, read only DAQ lists on the XCP slave.		
<b>Multiplicity</b>	1		
<b>Type</b>	EcucIntegerParamDef		
<b>Range</b>	0 .. 255		
<b>Default value</b>	–		
<b>Post-Build Variant Value</b>	false		
<b>Value Configuration Class</b>	<b>Pre-compile time</b>	X	All Variants
	<b>Link time</b>	–	
	<b>Post-build time</b>	–	
<b>Scope / Dependency</b>	scope: ECU		

<b>SWS Item</b>	<b>[ECUC_Xcp_00054]</b>		
<b>Parameter Name</b>	XcpOdtCount		
<b>Parent Container</b>	<a href="#">XcpGeneral</a>		
<b>Description</b>	This parameter indicates the amount of ODTs of a DAQ list using dynamic DAQ list configuration.		
<b>Multiplicity</b>	1		
<b>Type</b>	EcucIntegerParamDef		
<b>Range</b>	0 .. 252		
<b>Default value</b>	–		
<b>Post-Build Variant Value</b>	false		
<b>Value Configuration Class</b>	<b>Pre-compile time</b>	X	All Variants
	<b>Link time</b>	–	
	<b>Post-build time</b>	–	
<b>Scope / Dependency</b>	scope: ECU		
	dependency: This parameter is available only if XcpDaqConfigType is set to "1" i.e DAQ_DYNAMIC		

<b>SWS Item</b>	<b>[ECUC_Xcp_00059]</b>		
<b>Parameter Name</b>	XcpOdtEntriesCount		
<b>Parent Container</b>	<a href="#">XcpGeneral</a>		
<b>Description</b>	Indicates the amount of entries into an ODT using dynamic DAQ list configuration.		
<b>Multiplicity</b>	1		
<b>Type</b>	EcucIntegerParamDef		
<b>Range</b>	0 .. 255		
<b>Default value</b>	-		
<b>Post-Build Variant Value</b>	false		
<b>Value Configuration Class</b>	<b>Pre-compile time</b>	X	All Variants
	<b>Link time</b>	-	
	<b>Post-build time</b>	-	
<b>Scope / Dependency</b>	scope: ECU dependency: This parameter is available only if XcpDaqConfigType is set to "1" i.e DAQ_DYNAMIC		

<b>SWS Item</b>	<b>[ECUC_Xcp_00177]</b>		
<b>Parameter Name</b>	XcpOdtEntrySizeDaq		
<b>Parent Container</b>	<a href="#">XcpGeneral</a>		
<b>Description</b>	Indicates the size of an element described by an ODT entry to the DaqListType for a DAQ.		
<b>Multiplicity</b>	1		
<b>Type</b>	EcucIntegerParamDef		
<b>Range</b>	0 .. 255		
<b>Default value</b>	-		
<b>Post-Build Variant Value</b>	false		
<b>Value Configuration Class</b>	<b>Pre-compile time</b>	X	All Variants
	<b>Link time</b>	-	
	<b>Post-build time</b>	-	
<b>Scope / Dependency</b>	scope: ECU		

<b>SWS Item</b>	<b>[ECUC_Xcp_00178]</b>		
<b>Parameter Name</b>	XcpOdtEntrySizeStim		
<b>Parent Container</b>	<a href="#">XcpGeneral</a>		
<b>Description</b>	Indicates the size of an element described by an ODT entry to the DaqListType for a stim.		
<b>Multiplicity</b>	1		
<b>Type</b>	EcucIntegerParamDef		
<b>Range</b>	0 .. 255		
<b>Default value</b>	-		
<b>Post-Build Variant Value</b>	false		
<b>Value Configuration Class</b>	<b>Pre-compile time</b>	X	All Variants
	<b>Link time</b>	-	
	<b>Post-build time</b>	-	
<b>Scope / Dependency</b>	scope: ECU		

<b>SWS Item</b>	<b>[ECUC_Xcp_00006]</b>		
<b>Parameter Name</b>	XcpOnCanEnabled		
<b>Parent Container</b>	<a href="#">XcpGeneral</a>		
<b>Description</b>	Enabling of XCPonCAN functionality		
<b>Multiplicity</b>	1		
<b>Type</b>	EcucBooleanParamDef		
<b>Default value</b>	–		
<b>Post-Build Variant Value</b>	false		
<b>Value Configuration Class</b>	<b>Pre-compile time</b>	X	All Variants
	<b>Link time</b>	–	
	<b>Post-build time</b>	–	
<b>Scope / Dependency</b>	scope: local		

<b>SWS Item</b>	<b>[ECUC_Xcp_00009]</b>		
<b>Parameter Name</b>	XcpOnCddEnabled		
<b>Parent Container</b>	<a href="#">XcpGeneral</a>		
<b>Description</b>	Enabling of XCPonCdd functionality		
<b>Multiplicity</b>	1		
<b>Type</b>	EcucBooleanParamDef		
<b>Default value</b>	–		
<b>Post-Build Variant Value</b>	false		
<b>Value Configuration Class</b>	<b>Pre-compile time</b>	X	All Variants
	<b>Link time</b>	–	
	<b>Post-build time</b>	–	
<b>Scope / Dependency</b>	scope: local		

<b>SWS Item</b>	<b>[ECUC_Xcp_00008]</b>		
<b>Parameter Name</b>	XcpOnEthernetEnabled		
<b>Parent Container</b>	<a href="#">XcpGeneral</a>		
<b>Description</b>	Enabling of XCPonEthernet functionality		
<b>Multiplicity</b>	1		
<b>Type</b>	EcucBooleanParamDef		
<b>Default value</b>	–		
<b>Post-Build Variant Value</b>	false		
<b>Value Configuration Class</b>	<b>Pre-compile time</b>	X	All Variants
	<b>Link time</b>	–	
	<b>Post-build time</b>	–	
<b>Scope / Dependency</b>	scope: local		

<b>SWS Item</b>	<b>[ECUC_Xcp_00007]</b>		
<b>Parameter Name</b>	XcpOnFlexRayEnabled		
<b>Parent Container</b>	<a href="#">XcpGeneral</a>		
<b>Description</b>	Enabling of XCPonFlexRay functionality		
<b>Multiplicity</b>	1		
<b>Type</b>	EcucBooleanParamDef		
<b>Default value</b>	–		







<b>Post-Build Variant Value</b>	false		
<b>Value Configuration Class</b>	<b>Pre-compile time</b>	X	All Variants
	<b>Link time</b>	–	
	<b>Post-build time</b>	–	
<b>Scope / Dependency</b>	scope: local		

<b>SWS Item</b>	[ECUC_Xcp_00169]		
<b>Parameter Name</b>	XcpPrescalerSupported		
<b>Parent Container</b>	<a href="#">XcpGeneral</a>		
<b>Description</b>	This parameter enables and disables the support for Prescaler support. True is Enabled, False is disabled		
<b>Multiplicity</b>	1		
<b>Type</b>	EcucBooleanParamDef		
<b>Default value</b>	–		
<b>Post-Build Variant Value</b>	false		
<b>Value Configuration Class</b>	<b>Pre-compile time</b>	X	All Variants
	<b>Link time</b>	–	
	<b>Post-build time</b>	–	
<b>Scope / Dependency</b>	scope: local		

<b>SWS Item</b>	[ECUC_Xcp_00176]		
<b>Parameter Name</b>	XcpSuppressTxSupport		
<b>Parent Container</b>	<a href="#">XcpGeneral</a>		
<b>Description</b>	Switches the support of suppressing transmission of PDUs per communication channel on or off. TRUE: Suppressing of TxPDUs supported FALSE: Suppressing of TxPDUs not supported		
<b>Multiplicity</b>	1		
<b>Type</b>	EcucBooleanParamDef		
<b>Default value</b>	–		
<b>Post-Build Variant Value</b>	false		
<b>Value Configuration Class</b>	<b>Pre-compile time</b>	X	All Variants
	<b>Link time</b>	–	
	<b>Post-build time</b>	–	
<b>Scope / Dependency</b>	scope: local		

<b>SWS Item</b>	[ECUC_Xcp_00167]		
<b>Parameter Name</b>	XcpTimestampTicks		
<b>Parent Container</b>	<a href="#">XcpGeneral</a>		
<b>Description</b>	This parameter defines the timestamp that will increment based TIMESTAMP_TICKS per unit and wrap around if an overflow occurs.		
<b>Multiplicity</b>	1		
<b>Type</b>	EcucIntegerParamDef		
<b>Range</b>	0 .. 65535		
<b>Default value</b>	–		
<b>Post-Build Variant Value</b>	false		
<b>Value Configuration Class</b>	<b>Pre-compile time</b>	X	All Variants
	<b>Link time</b>	–	
	<b>Post-build time</b>	–	





<b>Scope / Dependency</b>	scope: local		
<b>SWS Item</b>	<b>[ECUC_Xcp_00166]</b>		
<b>Parameter Name</b>	XcpTimestampType		
<b>Parent Container</b>	<a href="#">XcpGeneral</a>		
<b>Description</b>	This parameter indicates the number of bytes used for the timestamp field. In case No_TIME_STAMP is selected the timestamp field is not available.		
<b>Multiplicity</b>	1		
<b>Type</b>	EcucEnumerationParamDef		
<b>Range</b>	FOUR_BYTE	timestamp field has the size of four byte.	
	NO_TIME_STAMP	timestamp field is not available.	
	ONE_BYTE	timestamp field has the size of one byte.	
	TWO_BYTE	timestamp field has the size of two byte.	
<b>Post-Build Variant Value</b>	false		
<b>Value Configuration Class</b>	<b>Pre-compile time</b>	X	All Variants
	<b>Link time</b>	–	
	<b>Post-build time</b>	–	
<b>Scope / Dependency</b>	scope: local		

<b>SWS Item</b>	<b>[ECUC_Xcp_00168]</b>		
<b>Parameter Name</b>	XcpTimestampUnit		
<b>Parent Container</b>	<a href="#">XcpGeneral</a>		
<b>Description</b>	This parameter indicates the resolution of the data acquisition clock of the slave when transferring data to master.		
<b>Multiplicity</b>	1		
<b>Type</b>	EcucEnumerationParamDef		
<b>Range</b>	TIMESTAMP_UNIT_100MS	Unit is 100 millisecond.	
	TIMESTAMP_UNIT_100NS	Unit is 100 nanosecond.	
	TIMESTAMP_UNIT_100PS	Unit is 100 picosecond.	
	TIMESTAMP_UNIT_100US	Unit is 100 microsecond.	
	TIMESTAMP_UNIT_10MS	Unit is 10 millisecond.	
	TIMESTAMP_UNIT_10NS	Unit is 10 nanosecond.	
	TIMESTAMP_UNIT_10PS	Unit is 10 picosecond.	
	TIMESTAMP_UNIT_10US	Unit is 10 microsecond.	
	TIMESTAMP_UNIT_1MS	Unit is 1 millisecond.	
	TIMESTAMP_UNIT_1NS	Unit is 1 nonasecond.	
	TIMESTAMP_UNIT_1PS	Unit is 1 picosecond.	
	TIMESTAMP_UNIT_1S	Unit is 1 second.	
	TIMESTAMP_UNIT_1US	Unit is 1 microsecond.	
	<b>Post-Build Variant Value</b>	false	
<b>Value Configuration Class</b>	<b>Pre-compile time</b>	X	All Variants
	<b>Link time</b>	–	
	<b>Post-build time</b>	–	
<b>Scope / Dependency</b>	scope: local		

<b>SWS Item</b>	<b>[ECUC_Xcp_00002]</b>		
<b>Parameter Name</b>	XcpVersionInfoApi		
<b>Parent Container</b>	<a href="#">XcpGeneral</a>		
<b>Description</b>	Enables/disables the existence of the XCP_GetVersionInfo() API service. TRUE: XCP_GetVersionInfo() API service exists FALSE: XCP_GetVersionInfo() API service does not exist		
<b>Multiplicity</b>	1		
<b>Type</b>	EcucBooleanParamDef		
<b>Default value</b>	false		
<b>Post-Build Variant Value</b>	false		
<b>Value Configuration Class</b>	<b>Pre-compile time</b>	X	All Variants
	<b>Link time</b>	–	
	<b>Post-build time</b>	–	
<b>Scope / Dependency</b>	scope: local		

<b>SWS Item</b>	<b>[ECUC_Xcp_00162]</b>		
<b>Parameter Name</b>	XcpCounterRef		
<b>Parent Container</b>	<a href="#">XcpGeneral</a>		
<b>Description</b>	This parameter contains a reference to the counter, which is used by XCP.		
<b>Multiplicity</b>	1		
<b>Type</b>	Reference to OsCounter		
<b>Post-Build Variant Value</b>	false		
<b>Value Configuration Class</b>	<b>Pre-compile time</b>	X	All Variants
	<b>Link time</b>	–	
	<b>Post-build time</b>	–	
<b>Scope / Dependency</b>	scope: local		

<b>SWS Item</b>	<b>[ECUC_Xcp_00180]</b>		
<b>Parameter Name</b>	XcpNvRamBlockIdRef		
<b>Parent Container</b>	<a href="#">XcpGeneral</a>		
<b>Description</b>	This reference contains the link to a non-volatile memory block to be used in the feature "RESUME MODE" so this information has to be stored non volatile to be available directly after start-up of the ECU.		
<b>Multiplicity</b>	0..1		
<b>Type</b>	Symbolic name reference to NvMBlockDescriptor		
<b>Post-Build Variant Multiplicity</b>	true		
<b>Post-Build Variant Value</b>	true		
<b>Multiplicity Configuration Class</b>	<b>Pre-compile time</b>	X	VARIANT-PRE-COMPILE
	<b>Link time</b>	–	
	<b>Post-build time</b>	X	VARIANT-POST-BUILD
<b>Value Configuration Class</b>	<b>Pre-compile time</b>	X	VARIANT-PRE-COMPILE
	<b>Link time</b>	–	
	<b>Post-build time</b>	X	VARIANT-POST-BUILD
<b>Scope / Dependency</b>	scope: local		

**No Included Containers**

### 10.2.3 XcpConfig

<b>SWS Item</b>	[ECUC_Xcp_00020]
<b>Container Name</b>	XcpConfig
<b>Parent Container</b>	Xcp
<b>Description</b>	This container contains the configuration parameters and sub containers of the AUTOSAR Xcp module.
<b>Configuration Parameters</b>	

Included Containers		
Container Name	Multiplicity	Scope / Dependency
XcpCommunicationChannel	0..*	This container represents the configuration of the communication channel of XCP.
XcpDaqList	1..*	This container contains the configuration of the DAQs.
XcpEventChannel	1..*	This container contains the configuration of event channels on the XCP slave.
XcpPageSwitching	0..1	This container represents configuration of the page switching feature.
XcpPdu	1..*	Contains PDU information. A PDU may be either a transmission PDU or a reception PDU.

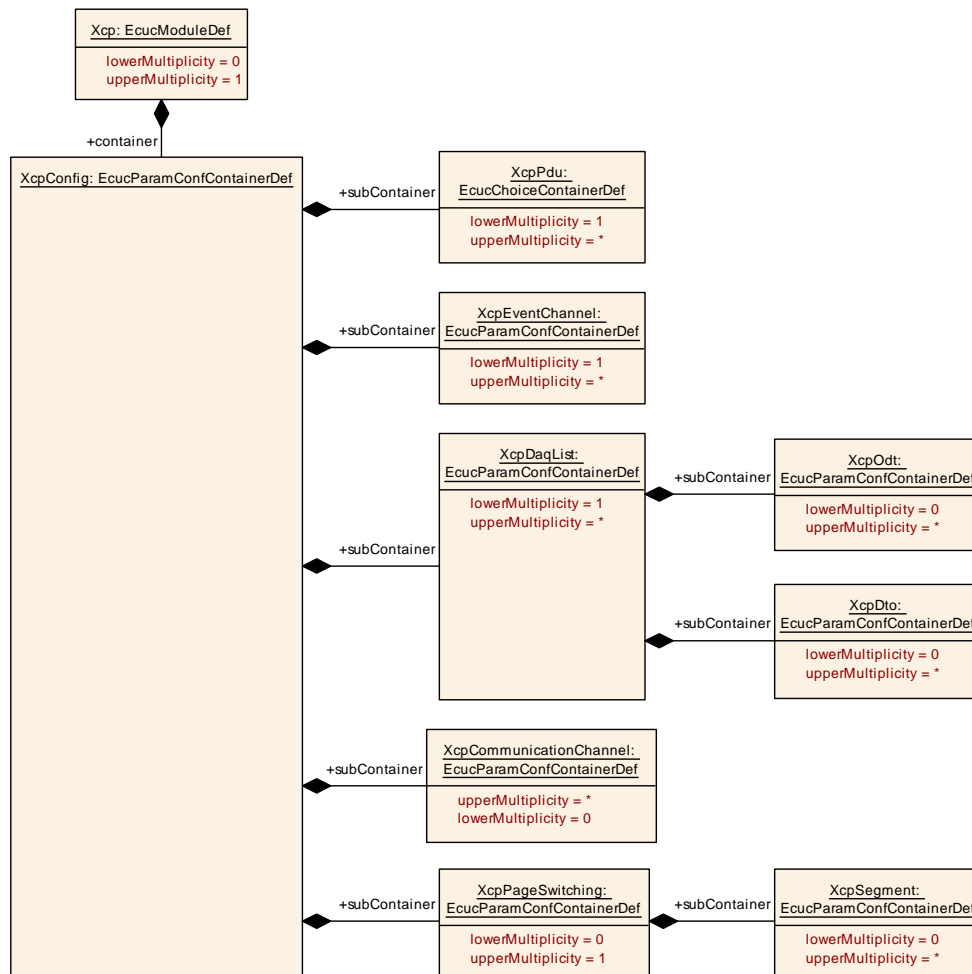


Figure 10.1: Diagram XcpConfig

## 10.2.4 XcpDaqList

<b>SWS Item</b>	[ECUC_Xcp_00050]
<b>Container Name</b>	XcpDaqList
<b>Parent Container</b>	<a href="#">XcpConfig</a>
<b>Description</b>	This container contains the configuration of the DAQs.
<b>Configuration Parameters</b>	

<b>SWS Item</b>	[ECUC_Xcp_00051]		
<b>Parameter Name</b>	XcpDaqListNumber		
<b>Parent Container</b>	<a href="#">XcpDaqList</a>		
<b>Description</b>	Index number of the DAQ list		
<b>Multiplicity</b>	1		
<b>Type</b>	EcucIntegerParamDef (Symbolic Name generated for this parameter)		
<b>Range</b>	0 .. 65534		
<b>Default value</b>	–		
<b>Post-Build Variant Value</b>	false		
<b>Value Configuration Class</b>	<b>Pre-compile time</b>	X	All Variants
	<b>Link time</b>	–	
	<b>Post-build time</b>	–	
<b>Scope / Dependency</b>	scope: ECU		

<b>SWS Item</b>	[ECUC_Xcp_00052]		
<b>Parameter Name</b>	XcpDaqListType		
<b>Parent Container</b>	<a href="#">XcpDaqList</a>		
<b>Description</b>	This indicates whether this DAQ list represents a DAQ or a STIM.		
<b>Multiplicity</b>	1		
<b>Type</b>	EcucEnumerationParamDef		
<b>Range</b>	DAQ	This DAQ list is a DAQ.	
	DAQ_STIM	This DAQ list can be DAQ or STIM.	
	STIM	This DAQ list is a STIM.	
<b>Post-Build Variant Value</b>	false		
<b>Value Configuration Class</b>	<b>Pre-compile time</b>	X	All Variants
	<b>Link time</b>	–	
	<b>Post-build time</b>	–	
<b>Scope / Dependency</b>	scope: ECU		

<b>SWS Item</b>	[ECUC_Xcp_00053]
<b>Parameter Name</b>	XcpMaxOdt
<b>Parent Container</b>	<a href="#">XcpDaqList</a>
<b>Description</b>	MAX_ODT indicates the maximum amount of ODTs in this DAQ list (STATIC configuration)
<b>Multiplicity</b>	1
<b>Type</b>	EcucIntegerParamDef
<b>Range</b>	0 .. 252
<b>Default value</b>	–
<b>Post-Build Variant Value</b>	false





<b>Value Configuration Class</b>	<b>Pre-compile time</b>	X	All Variants
	<b>Link time</b>	–	
	<b>Post-build time</b>	–	
<b>Scope / Dependency</b>	scope: ECU dependency: only available if XcpDaqConfigType is "DAQ_STATIC" (bit set to '0')		

<b>SWS Item</b>	<b>[ECUC_Xcp_00058]</b>		
<b>Parameter Name</b>	XcpMaxOdtEntries		
<b>Parent Container</b>	<a href="#">XcpDaqList</a>		
<b>Description</b>	This parameter indicates the maximum amount of entries in an ODT of this DAQ list (STATIC configuration).		
<b>Multiplicity</b>	1		
<b>Type</b>	EcucIntegerParamDef		
<b>Range</b>	0 .. 255		
<b>Default value</b>	–		
<b>Post-Build Variant Value</b>	false		
<b>Value Configuration Class</b>	<b>Pre-compile time</b>	X	All Variants
	<b>Link time</b>	–	
	<b>Post-build time</b>	–	
<b>Scope / Dependency</b>	scope: ECU dependency: only available if XcpDaqConfigType is "DAQ_STATIC" (bit set to '0')		

Included Containers		
Container Name	Multiplicity	Scope / Dependency
<a href="#">XcpDto</a>	0..*	This container collects data transfer object specific parameters for the DAQ list.
<a href="#">XcpOdt</a>	0..*	This container contains ODT-specific parameter for the DAQ list.

## 10.2.5 XcpDto

<b>SWS Item</b>	<b>[ECUC_Xcp_00065]</b>		
<b>Container Name</b>	XcpDto		
<b>Parent Container</b>	<a href="#">XcpDaqList</a>		
<b>Description</b>	This container collects data transfer object specific parameters for the DAQ list.		
<b>Configuration Parameters</b>			

<b>SWS Item</b>	<b>[ECUC_Xcp_00066]</b>		
<b>Parameter Name</b>	XcpDtoPid		
<b>Parent Container</b>	<a href="#">XcpDto</a>		
<b>Description</b>	Packet identifier (PID) of the DTO that identifies the ODT the content of the DTO.		
<b>Multiplicity</b>	1		
<b>Type</b>	EcucIntegerParamDef (Symbolic Name generated for this parameter)		
<b>Range</b>	0 .. 251		
<b>Default value</b>	–		





<b>Post-Build Variant Value</b>	false		
<b>Value Configuration Class</b>	<b>Pre-compile time</b>	X	All Variants
	<b>Link time</b>	–	
	<b>Post-build time</b>	–	
<b>Scope / Dependency</b>	scope: ECU		

<b>SWS Item</b>	<b>[ECUC_Xcp_00067]</b>		
<b>Parameter Name</b>	XcpDto2PduMapping		
<b>Parent Container</b>	<a href="#">XcpDto</a>		
<b>Description</b>	This reference specifies the mapping of the DTO to the PDUs from the lower-layer interfaces (CanIf, FrIf, SoAd and Cdd).  A reference to a XcpRxPdu is only feasible if the the DaqListType is DAQ_STIM. A reference to a XcpTxPdu is only feasible if the DaqListType is DAQ.		
<b>Multiplicity</b>	1		
<b>Type</b>	Choice reference to [ <a href="#">XcpRxPdu</a> , <a href="#">XcpTxPdu</a> ]		
<b>Post-Build Variant Value</b>	false		
<b>Value Configuration Class</b>	<b>Pre-compile time</b>	X	All Variants
	<b>Link time</b>	–	
	<b>Post-build time</b>	–	
<b>Scope / Dependency</b>	scope: ECU		

<b>No Included Containers</b>
-------------------------------

## 10.2.6 XcpOdt

<b>SWS Item</b>	<b>[ECUC_Xcp_00055]</b>		
<b>Container Name</b>	XcpOdt		
<b>Parent Container</b>	<a href="#">XcpDaqList</a>		
<b>Description</b>	This container contains ODT-specific parameter for the DAQ list.		
<b>Configuration Parameters</b>			

<b>SWS Item</b>	<b>[ECUC_Xcp_00060]</b>		
<b>Parameter Name</b>	XcpOdtEntryMaxSize		
<b>Parent Container</b>	<a href="#">XcpOdt</a>		
<b>Description</b>	This parameter indicates the upper limit for the size of the element described by an ODT entry. Depending on the DaqListType this ODT belongs to it describes the limit for a DAQ (MAX_ODT_ENTRY_SIZE_DAQ) or a STIM (MAX_ODT_ENTRY_SIZE_STIM).		
<b>Multiplicity</b>	1		
<b>Type</b>	EcucIntegerParamDef		
<b>Range</b>	0 .. 254		
<b>Default value</b>	–		
<b>Post-Build Variant Value</b>	false		
<b>Value Configuration Class</b>	<b>Pre-compile time</b>	X	All Variants
	<b>Link time</b>	–	
	<b>Post-build time</b>	–	





<b>Scope / Dependency</b>	scope: ECU		
<b>SWS Item</b>	<b>[ECUC_Xcp_00057]</b>		
<b>Parameter Name</b>	XcpOdtNumber		
<b>Parent Container</b>	<a href="#">XcpOdt</a>		
<b>Description</b>	Index number of this ODT within the DAQ list.		
<b>Multiplicity</b>	0..1		
<b>Type</b>	EcucIntegerParamDef (Symbolic Name generated for this parameter)		
<b>Range</b>	0 .. 251		
<b>Default value</b>	-		
<b>Post-Build Variant Multiplicity</b>	false		
<b>Post-Build Variant Value</b>	false		
<b>Multiplicity Configuration Class</b>	<b>Pre-compile time</b>	X	All Variants
	<b>Link time</b>	-	
	<b>Post-build time</b>	-	
<b>Value Configuration Class</b>	<b>Pre-compile time</b>	X	All Variants
	<b>Link time</b>	-	
	<b>Post-build time</b>	-	
<b>Scope / Dependency</b>	scope: ECU		

<b>SWS Item</b>	<b>[ECUC_Xcp_00056]</b>		
<b>Parameter Name</b>	XcpOdt2DtoMapping		
<b>Parent Container</b>	<a href="#">XcpOdt</a>		
<b>Description</b>	This reference maps the ODT to the according DTO in which it will be transmitted.		
<b>Multiplicity</b>	0..1		
<b>Type</b>	Reference to <a href="#">XcpDto</a>		
<b>Post-Build Variant Value</b>	false		
<b>Value Configuration Class</b>	<b>Pre-compile time</b>	X	All Variants
	<b>Link time</b>	-	
	<b>Post-build time</b>	-	
<b>Scope / Dependency</b>	scope: ECU		

Included Containers		
Container Name	Multiplicity	Scope / Dependency
<a href="#">XcpOdtEntry</a>	1..*	This container collects all configuration parameters that comprise an ODT entry.

## 10.2.7 XcpOdtEntry

<b>SWS Item</b>	<b>[ECUC_Xcp_00061]</b>		
<b>Container Name</b>	XcpOdtEntry		
<b>Parent Container</b>	<a href="#">XcpOdt</a>		
<b>Description</b>	This container collects all configuration parameters that comprise an ODT entry.		
<b>Configuration Parameters</b>			



<b>SWS Item</b>	<b>[ECUC_Xcp_00063]</b>		
<b>Parameter Name</b>	XcpOdtEntryAddress		
<b>Parent Container</b>	<a href="#">XcpOdtEntry</a>		
<b>Description</b>	Memory address that the ODT entry is referencing to.		
<b>Multiplicity</b>	0..1		
<b>Type</b>	EcucLinkerSymbolDef		
<b>Default value</b>	-		
<b>maxLength</b>	-		
<b>minLength</b>	-		
<b>Regular Expression</b>	-		
<b>Post-Build Variant Multiplicity</b>	false		
<b>Post-Build Variant Value</b>	false		
<b>Multiplicity Configuration Class</b>	<b>Pre-compile time</b>	X	All Variants
	<b>Link time</b>	-	
	<b>Post-build time</b>	-	
<b>Value Configuration Class</b>	<b>Pre-compile time</b>	X	All Variants
	<b>Link time</b>	-	
	<b>Post-build time</b>	-	
<b>Scope / Dependency</b>	scope: ECU		

<b>SWS Item</b>	<b>[ECUC_Xcp_00179]</b>		
<b>Parameter Name</b>	XcpOdtEntryBitOffset		
<b>Parent Container</b>	<a href="#">XcpOdtEntry</a>		
<b>Description</b>	Represent the bit offset in case of the element represents status bit.		
<b>Multiplicity</b>	0..1		
<b>Type</b>	EcucIntegerParamDef		
<b>Range</b>	0 .. 31		
<b>Default value</b>	-		
<b>Post-Build Variant Multiplicity</b>	false		
<b>Post-Build Variant Value</b>	false		
<b>Multiplicity Configuration Class</b>	<b>Pre-compile time</b>	X	All Variants
	<b>Link time</b>	-	
	<b>Post-build time</b>	-	
<b>Value Configuration Class</b>	<b>Pre-compile time</b>	X	All Variants
	<b>Link time</b>	-	
	<b>Post-build time</b>	-	
<b>Scope / Dependency</b>	scope: ECU		

<b>SWS Item</b>	<b>[ECUC_Xcp_00064]</b>		
<b>Parameter Name</b>	XcpOdtEntryLength		
<b>Parent Container</b>	<a href="#">XcpOdtEntry</a>		
<b>Description</b>	Length of the referenced memory area that is referenced by the ODT entry.		
<b>Multiplicity</b>	0..1		
<b>Type</b>	EcucIntegerParamDef		
<b>Range</b>	0 .. 255		
<b>Default value</b>	-		





<b>Post-Build Variant Multiplicity</b>	false		
<b>Post-Build Variant Value</b>	false		
<b>Multiplicity Configuration Class</b>	<b>Pre-compile time</b>	X	All Variants
	<b>Link time</b>	–	
	<b>Post-build time</b>	–	
<b>Value Configuration Class</b>	<b>Pre-compile time</b>	X	All Variants
	<b>Link time</b>	–	
	<b>Post-build time</b>	–	
<b>Scope / Dependency</b>	scope: ECU		

<b>SWS Item</b>	[ECUC_Xcp_00062]		
<b>Parameter Name</b>	XcpOdtEntryNumber		
<b>Parent Container</b>	<a href="#">XcpOdtEntry</a>		
<b>Description</b>	Index number of the ODT entry		
<b>Multiplicity</b>	0..1		
<b>Type</b>	EcucIntegerParamDef		
<b>Range</b>	0 .. 254		
<b>Default value</b>	–		
<b>Post-Build Variant Multiplicity</b>	false		
<b>Post-Build Variant Value</b>	false		
<b>Multiplicity Configuration Class</b>	<b>Pre-compile time</b>	X	All Variants
	<b>Link time</b>	–	
	<b>Post-build time</b>	–	
<b>Value Configuration Class</b>	<b>Pre-compile time</b>	X	All Variants
	<b>Link time</b>	–	
	<b>Post-build time</b>	–	
<b>Scope / Dependency</b>	scope: ECU		

<b>No Included Containers</b>
-------------------------------

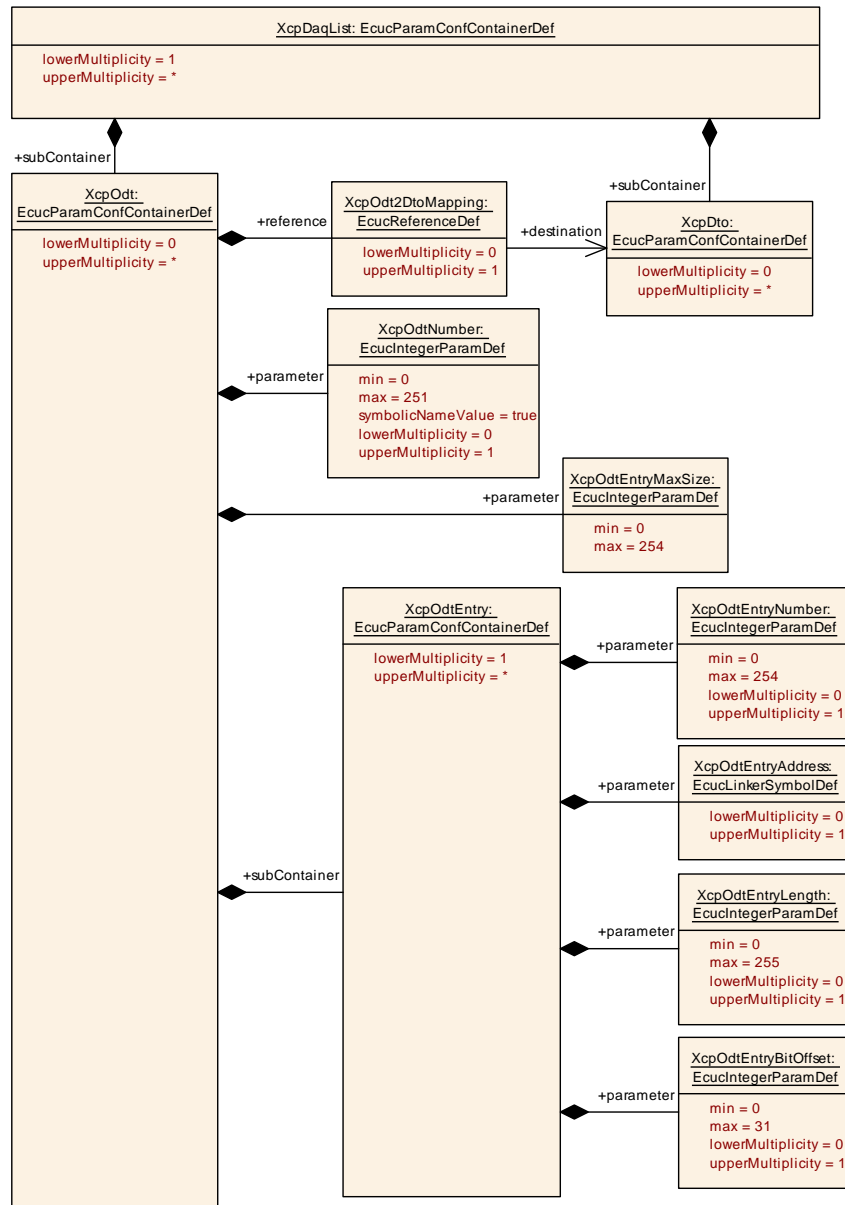


Figure 10.2: Diagram XcpOdtEntry

### 10.2.8 XcpEventChannel

SWS Item	[ECUC_Xcp_00150]
Container Name	XcpEventChannel
Parent Container	<a href="#">XcpConfig</a>
Description	This container contains the configuration of event channels on the XCP slave.
Configuration Parameters	

<b>SWS Item</b>	<b>[ECUC_Xcp_00171]</b>		
<b>Parameter Name</b>	XcpEventChannelConsistency		
<b>Parent Container</b>	<a href="#">XcpEventChannel</a>		
<b>Description</b>	Type of consistency used by event channel		
<b>Multiplicity</b>	1		
<b>Type</b>	EcucEnumerationParamDef		
<b>Range</b>	DAQ	Consistency on DAQ list level	
	EVENT	Consistency on Event Channel Level	
	ODT	Consistency on ODT level (default value).	
<b>Default value</b>	<a href="#">ODT</a>		
<b>Post-Build Variant Value</b>	false		
<b>Value Configuration Class</b>	<b>Pre-compile time</b>	X	All Variants
	<b>Link time</b>	–	
	<b>Post-build time</b>	–	
<b>Scope / Dependency</b>	scope: local		

<b>SWS Item</b>	<b>[ECUC_Xcp_00153]</b>		
<b>Parameter Name</b>	XcpEventChannelMaxDaqList		
<b>Parent Container</b>	<a href="#">XcpEventChannel</a>		
<b>Description</b>	Maximum amount of DAQ lists that are handled by this event channel.		
<b>Multiplicity</b>	1		
<b>Type</b>	EcucIntegerParamDef		
<b>Range</b>	0 .. 255		
<b>Default value</b>	–		
<b>Post-Build Variant Value</b>	false		
<b>Value Configuration Class</b>	<b>Pre-compile time</b>	X	All Variants
	<b>Link time</b>	–	
	<b>Post-build time</b>	–	
<b>Scope / Dependency</b>	scope: ECU		

<b>SWS Item</b>	<b>[ECUC_Xcp_00152]</b>		
<b>Parameter Name</b>	XcpEventChannelNumber		
<b>Parent Container</b>	<a href="#">XcpEventChannel</a>		
<b>Description</b>	Index number of the event channel.		
<b>Multiplicity</b>	1		
<b>Type</b>	EcucIntegerParamDef (Symbolic Name generated for this parameter)		
<b>Range</b>	0 .. 65534		
<b>Default value</b>	–		
<b>Post-Build Variant Value</b>	false		
<b>Value Configuration Class</b>	<b>Pre-compile time</b>	X	All Variants
	<b>Link time</b>	–	
	<b>Post-build time</b>	–	
<b>Scope / Dependency</b>	scope: ECU		

<b>SWS Item</b>	<b>[ECUC_Xcp_00154]</b>		
<b>Parameter Name</b>	XcpEventChannelPriority		
<b>Parent Container</b>	<a href="#">XcpEventChannel</a>		
<b>Description</b>	Priority of the event channel		
<b>Multiplicity</b>	1		
<b>Type</b>	EcucIntegerParamDef		
<b>Range</b>	0 .. 255		
<b>Default value</b>	-		
<b>Post-Build Variant Value</b>	false		
<b>Value Configuration Class</b>	<b>Pre-compile time</b>	X	All Variants
	<b>Link time</b>	-	
	<b>Post-build time</b>	-	
<b>Scope / Dependency</b>	scope: ECU		

<b>SWS Item</b>	<b>[ECUC_Xcp_00173]</b>		
<b>Parameter Name</b>	XcpEventChannelTimeCycle		
<b>Parent Container</b>	<a href="#">XcpEventChannel</a>		
<b>Description</b>	The event channel time cycle indicates which sampling period is used to process this event channel. A value of 0 means 'Not cyclic'.		
<b>Multiplicity</b>	1		
<b>Type</b>	EcucIntegerParamDef		
<b>Range</b>	0 .. 255		
<b>Default value</b>	-		
<b>Post-Build Variant Value</b>	false		
<b>Value Configuration Class</b>	<b>Pre-compile time</b>	X	All Variants
	<b>Link time</b>	-	
	<b>Post-build time</b>	-	
<b>Scope / Dependency</b>	scope: local		

<b>SWS Item</b>	<b>[ECUC_Xcp_00174]</b>		
<b>Parameter Name</b>	XcpEventChannelTimeUnit		
<b>Parent Container</b>	<a href="#">XcpEventChannel</a>		
<b>Description</b>	This configuration parameter indicates the unit of the event channel time cycle.		
<b>Multiplicity</b>	0..1		
<b>Type</b>	EcucEnumerationParamDef		
<b>Range</b>	TIMESTAMP_UNIT_100MS	Unit is 100 millisecond.	
	TIMESTAMP_UNIT_100NS	Unit is 100 nanosecond.	
	TIMESTAMP_UNIT_100PS	Unit is 100 picosecond.	
	TIMESTAMP_UNIT_100US	Unit is 100 microsecond.	
	TIMESTAMP_UNIT_10MS	Unit is 10 millisecond.	
	TIMESTAMP_UNIT_10NS	Unit is 10 nanosecond.	
	TIMESTAMP_UNIT_10PS	Unit is 10 picosecond.	
	TIMESTAMP_UNIT_10US	Unit is 10 microsecond.	
	TIMESTAMP_UNIT_1MS	Unit is 1 millisecond.	
	TIMESTAMP_UNIT_1NS	Unit is 1 nanosecond.	
	TIMESTAMP_UNIT_1PS	Unit is 1 picosecond.	





	TIMESTAMP_UNIT_1S	Unit is 1 second.	
	TIMESTAMP_UNIT_1US	Unit is 1 microsecond.	
<b>Post-Build Variant Multiplicity</b>	false		
<b>Post-Build Variant Value</b>	false		
<b>Multiplicity Configuration Class</b>	<b>Pre-compile time</b>	X	All Variants
	<b>Link time</b>	–	
	<b>Post-build time</b>	–	
<b>Value Configuration Class</b>	<b>Pre-compile time</b>	X	All Variants
	<b>Link time</b>	–	
	<b>Post-build time</b>	–	
<b>Scope / Dependency</b>	scope: local  dependency: Dependent on the Parameter EventChannelTimeCycle. When this parameter is set to 0, the entire event channel time unit parameter shall be ignored.		

<b>SWS Item</b>	<b>[ECUC_Xcp_00172]</b>		
<b>Parameter Name</b>	XcpEventChannelType		
<b>Parent Container</b>	<a href="#">XcpEventChannel</a>		
<b>Description</b>	This configuration parameter indicates what kind of DAQ list can be allocated to this event channel.		
<b>Multiplicity</b>	1		
<b>Type</b>	EcucEnumerationParamDef		
<b>Range</b>	DAQ	only DAQ supported (default value).	
	DAQ_STIM	Both DAQ and STIM supported (Simultaneously).	
	STIM	only STIM supported	
<b>Default value</b>	<a href="#">DAQ</a>		
<b>Post-Build Variant Value</b>	false		
<b>Value Configuration Class</b>	<b>Pre-compile time</b>	X	All Variants
	<b>Link time</b>	–	
	<b>Post-build time</b>	–	
<b>Scope / Dependency</b>	scope: local		

<b>SWS Item</b>	<b>[ECUC_Xcp_00151]</b>		
<b>Parameter Name</b>	XcpEventChannelTriggeredDaqListRef		
<b>Parent Container</b>	<a href="#">XcpEventChannel</a>		
<b>Description</b>	References all DAQ lists that are triggered by this event channel.		
<b>Multiplicity</b>	0..*		
<b>Type</b>	Reference to <a href="#">XcpDaqList</a>		
<b>Post-Build Variant Multiplicity</b>	false		
<b>Post-Build Variant Value</b>	false		
<b>Multiplicity Configuration Class</b>	<b>Pre-compile time</b>	X	All Variants
	<b>Link time</b>	–	
	<b>Post-build time</b>	–	
<b>Value Configuration Class</b>	<b>Pre-compile time</b>	X	All Variants
	<b>Link time</b>	–	
	<b>Post-build time</b>	–	
<b>Scope / Dependency</b>	scope: ECU		

<b>No Included Containers</b>
-------------------------------

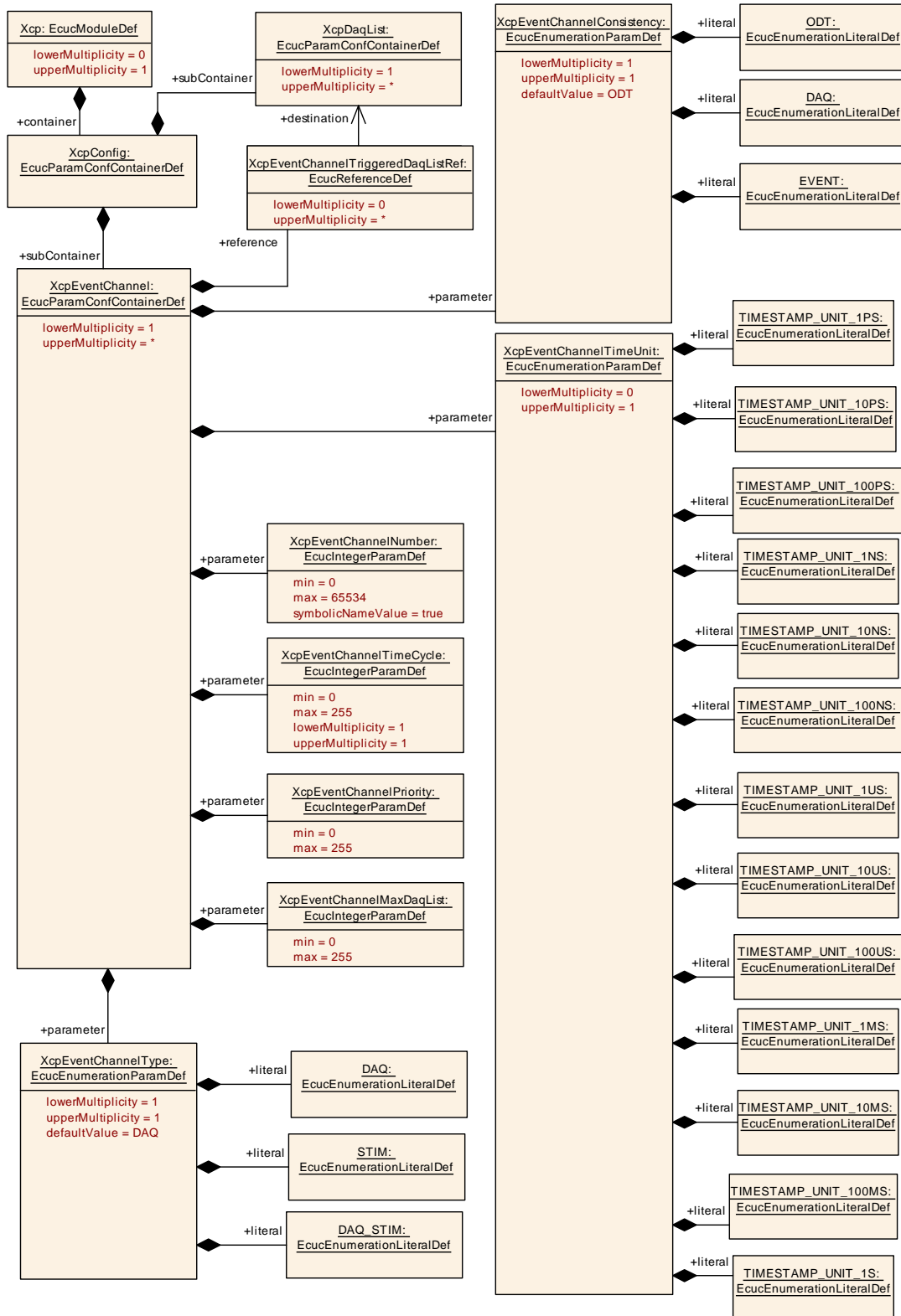


Figure 10.3: Diagram XcpChannel

### 10.2.9 XcpPdu

<b>SWS Item</b>	[ECUC_Xcp_00100]
<b>Choice Container Name</b>	XcpPdu
<b>Parent Container</b>	<a href="#">XcpConfig</a>
<b>Description</b>	Contains PDU information. A PDU may be either a transmission PDU or a reception PDU.

Container Choices		
Container Name	Multiplicity	Scope / Dependency
<a href="#">XcpRxPdu</a>	0..1	This container specifies received PDUs.
<a href="#">XcpTxPdu</a>	0..1	This container specifies transmission PDUs.

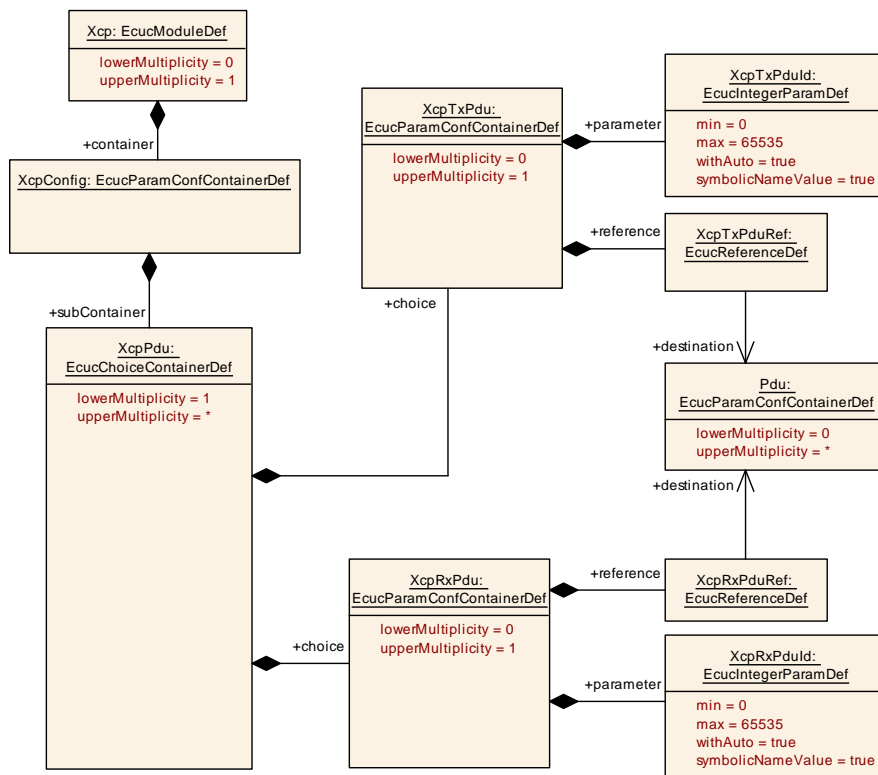


Figure 10.4: Diagram XcpPdu

### 10.2.10 XcpRxPdu

<b>SWS Item</b>	[ECUC_Xcp_00105]
<b>Container Name</b>	XcpRxPdu
<b>Parent Container</b>	<a href="#">XcpPdu</a>
<b>Description</b>	This container specifies received PDUs.
<b>Configuration Parameters</b>	



<b>SWS Item</b>	<b>[ECUC_Xcp_00106]</b>		
<b>Parameter Name</b>	XcpRxPduId		
<b>Parent Container</b>	<a href="#">XcpRxPdu</a>		
<b>Description</b>	ID of the PDU that will be received via a Xcp_<module>RxIndication.		
<b>Multiplicity</b>	1		
<b>Type</b>	EcucIntegerParamDef (Symbolic Name generated for this parameter)		
<b>Range</b>	0 .. 65535		
<b>Default value</b>	-		
<b>Post-Build Variant Value</b>	false		
<b>Value Configuration Class</b>	<b>Pre-compile time</b>	X	All Variants
	<b>Link time</b>	-	
	<b>Post-build time</b>	-	
<b>Scope / Dependency</b>	scope: ECU withAuto = true		

<b>SWS Item</b>	<b>[ECUC_Xcp_00107]</b>		
<b>Parameter Name</b>	XcpRxPduRef		
<b>Parent Container</b>	<a href="#">XcpRxPdu</a>		
<b>Description</b>	-		
<b>Multiplicity</b>	1		
<b>Type</b>	Reference to Pdu		
<b>Post-Build Variant Value</b>	true		
<b>Value Configuration Class</b>	<b>Pre-compile time</b>	X	VARIANT-PRE-COMPILE
	<b>Link time</b>	-	
	<b>Post-build time</b>	X	VARIANT-POST-BUILD
<b>Scope / Dependency</b>	scope: ECU		

No Included Containers

### 10.2.11 XcpTxPdu

<b>SWS Item</b>	<b>[ECUC_Xcp_00101]</b>
<b>Container Name</b>	XcpTxPdu
<b>Parent Container</b>	<a href="#">XcpPdu</a>
<b>Description</b>	This container specifies transmission PDUs.
<b>Configuration Parameters</b>	

<b>SWS Item</b>	<b>[ECUC_Xcp_00103]</b>
<b>Parameter Name</b>	XcpTxPduId
<b>Parent Container</b>	<a href="#">XcpTxPdu</a>
<b>Description</b>	The PDU identifier, which has to be used by the lower layer BSW module for Tx Confirmations or TriggerTransmits.
<b>Multiplicity</b>	1
<b>Type</b>	EcucIntegerParamDef (Symbolic Name generated for this parameter)





<b>Range</b>	0 .. 65535		
<b>Default value</b>	–		
<b>Post-Build Variant Value</b>	false		
<b>Value Configuration Class</b>	<b>Pre-compile time</b>	X	All Variants
	<b>Link time</b>	–	
	<b>Post-build time</b>	–	
<b>Scope / Dependency</b>	scope: ECU withAuto = true		

<b>SWS Item</b>	<b>[ECUC_Xcp_00104]</b>		
<b>Parameter Name</b>	XcpTxPduRef		
<b>Parent Container</b>	<a href="#">XcpTxPdu</a>		
<b>Description</b>	Reference to the external PDU definition.		
<b>Multiplicity</b>	1		
<b>Type</b>	Reference to Pdu		
<b>Post-Build Variant Value</b>	true		
<b>Value Configuration Class</b>	<b>Pre-compile time</b>	X	VARIANT-PRE-COMPILE
	<b>Link time</b>	–	
	<b>Post-build time</b>	X	VARIANT-POST-BUILD
<b>Scope / Dependency</b>	scope: ECU		

<b>No Included Containers</b>
-------------------------------

## 10.2.12 XcpCommunicationChannel

<b>SWS Item</b>	<b>[ECUC_Xcp_00183]</b>		
<b>Container Name</b>	XcpCommunicationChannel		
<b>Parent Container</b>	<a href="#">XcpConfig</a>		
<b>Description</b>	This container represents the configuration of the communication channel of XCP.		
<b>Configuration Parameters</b>			

<b>SWS Item</b>	<b>[ECUC_Xcp_00185]</b>		
<b>Parameter Name</b>	XcpChannelRxPduRef		
<b>Parent Container</b>	<a href="#">XcpCommunicationChannel</a>		
<b>Description</b>	Optional reference to the XCP Rx PDU.		
<b>Multiplicity</b>	0..1		
<b>Type</b>	Reference to <a href="#">XcpRxPdu</a>		
<b>Post-Build Variant Value</b>	true		
<b>Value Configuration Class</b>	<b>Pre-compile time</b>	X	VARIANT-PRE-COMPILE
	<b>Link time</b>	–	
	<b>Post-build time</b>	X	VARIANT-POST-BUILD
<b>Scope / Dependency</b>	scope: ECU		

<b>SWS Item</b>	<b>[ECUC_Xcp_00184]</b>		
<b>Parameter Name</b>	XcpChannelTxPduRef		
<b>Parent Container</b>	<a href="#">XcpCommunicationChannel</a>		
<b>Description</b>	Reference to the XCP Tx PDU.		
<b>Multiplicity</b>	1		
<b>Type</b>	Reference to <a href="#">XcpTxPdu</a>		
<b>Post-Build Variant Value</b>	true		
<b>Value Configuration Class</b>	<b>Pre-compile time</b>	X	VARIANT-PRE-COMPILE
	<b>Link time</b>	–	
	<b>Post-build time</b>	X	VARIANT-POST-BUILD
<b>Scope / Dependency</b>	scope: ECU		

<b>SWS Item</b>	<b>[ECUC_Xcp_00186]</b>		
<b>Parameter Name</b>	XcpComMChannelRef		
<b>Parent Container</b>	<a href="#">XcpCommunicationChannel</a>		
<b>Description</b>	Reference to the ComM channel the PDUs belong to.		
<b>Multiplicity</b>	1		
<b>Type</b>	Reference to ComMChannel		
<b>Post-Build Variant Value</b>	true		
<b>Value Configuration Class</b>	<b>Pre-compile time</b>	X	VARIANT-PRE-COMPILE
	<b>Link time</b>	–	
	<b>Post-build time</b>	X	VARIANT-POST-BUILD
<b>Scope / Dependency</b>	scope: ECU		

<b>No Included Containers</b>
-------------------------------

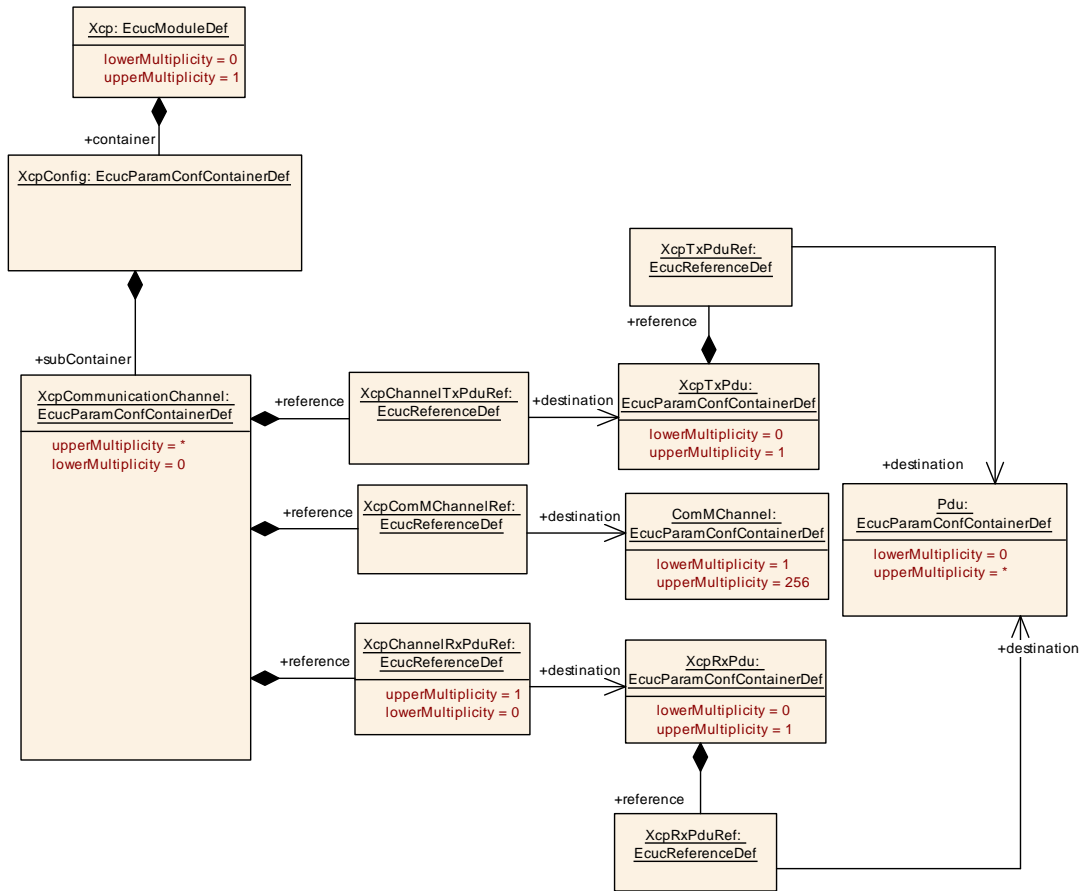


Figure 10.5: Diagram XcpCommunicationChannel

### 10.2.13 XcpPageSwitching

<b>SWS Item</b>	[ECUC_Xcp_00187]
<b>Container Name</b>	XcpPageSwitching
<b>Parent Container</b>	<a href="#">XcpConfig</a>
<b>Description</b>	This container represents configuration of the page switching feature.
<b>Configuration Parameters</b>	

Included Containers		
Container Name	Multiplicity	Scope / Dependency
<a href="#">XcpSegment</a>	0..*	This container represents configuration of the page switching segment element.

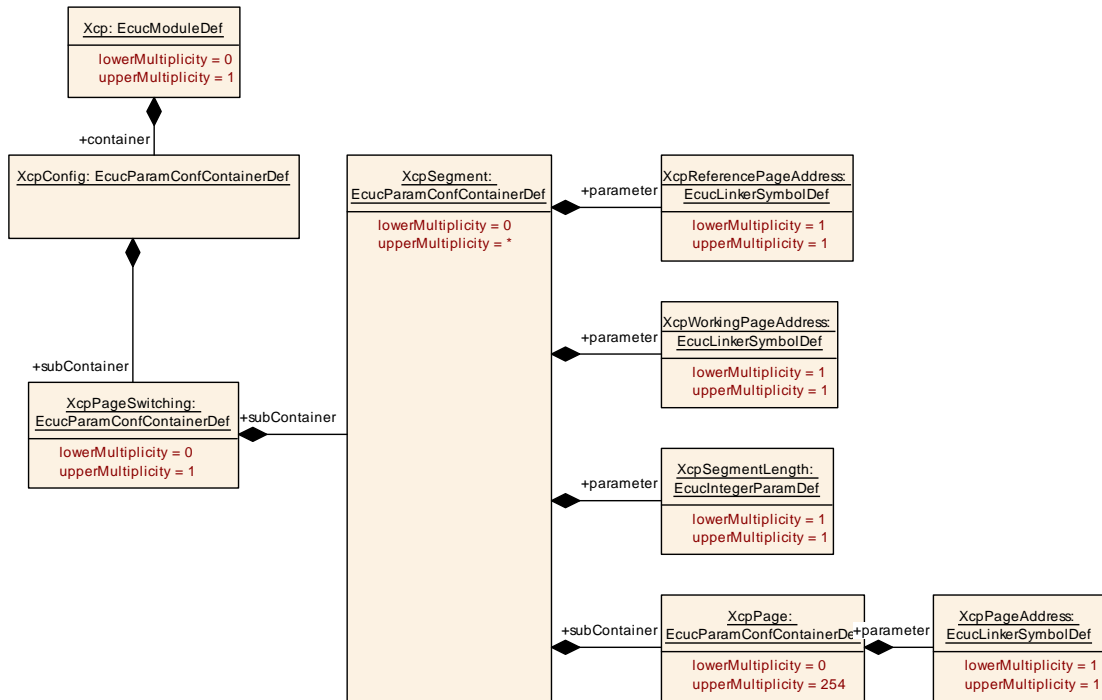


Figure 10.6: Diagram XcpPageSwitching

### 10.2.14 XcpSegment

<b>SWS Item</b>	[ECUC_Xcp_00188]
<b>Container Name</b>	XcpSegment
<b>Parent Container</b>	<a href="#">XcpPageSwitching</a>
<b>Description</b>	This container represents configuration of the page switching segment element.
<b>Configuration Parameters</b>	

<b>SWS Item</b>	[ECUC_Xcp_00189]									
<b>Parameter Name</b>	XcpReferencePageAddress									
<b>Parent Container</b>	<a href="#">XcpSegment</a>									
<b>Description</b>	Memory address of the reference page (Page ID = 0).									
<b>Multiplicity</b>	1									
<b>Type</b>	EcucLinkerSymbolDef									
<b>Default value</b>	-									
<b>maxLength</b>	-									
<b>minLength</b>	-									
<b>Regular Expression</b>	-									
<b>Value Configuration Class</b>	<table border="1"> <tr> <td><b>Pre-compile time</b></td> <td>X</td> <td>All Variants</td> </tr> <tr> <td><b>Link time</b></td> <td>-</td> <td></td> </tr> <tr> <td><b>Post-build time</b></td> <td>-</td> <td></td> </tr> </table>	<b>Pre-compile time</b>	X	All Variants	<b>Link time</b>	-		<b>Post-build time</b>	-	
<b>Pre-compile time</b>	X	All Variants								
<b>Link time</b>	-									
<b>Post-build time</b>	-									
<b>Scope / Dependency</b>	scope: local									

<b>SWS Item</b>	<b>[ECUC_Xcp_00191]</b>		
<b>Parameter Name</b>	XcpSegmentLength		
<b>Parent Container</b>	<a href="#">XcpSegment</a>		
<b>Description</b>	Length of the segment in bytes.		
<b>Multiplicity</b>	1		
<b>Type</b>	EcucIntegerParamDef		
<b>Range</b>	0 .. 18446744073709551615		
<b>Default value</b>	-		
<b>Value Configuration Class</b>	<b>Pre-compile time</b>	X	All Variants
	<b>Link time</b>	-	
	<b>Post-build time</b>	-	
<b>Scope / Dependency</b>	scope: local		

<b>SWS Item</b>	<b>[ECUC_Xcp_00190]</b>		
<b>Parameter Name</b>	XcpWorkingPageAddress		
<b>Parent Container</b>	<a href="#">XcpSegment</a>		
<b>Description</b>	Memory address address of the working page (Page ID = 1).		
<b>Multiplicity</b>	1		
<b>Type</b>	EcucLinkerSymbolDef		
<b>Default value</b>	-		
<b>maxLength</b>	-		
<b>minLength</b>	-		
<b>Regular Expression</b>	-		
<b>Value Configuration Class</b>	<b>Pre-compile time</b>	X	All Variants
	<b>Link time</b>	-	
	<b>Post-build time</b>	-	
<b>Scope / Dependency</b>	scope: local		

Included Containers		
Container Name	Multiplicity	Scope / Dependency
<a href="#">XcpPage</a>	0..254	This container represents configuration of the optional page element.

### 10.2.15 XcpPage

<b>SWS Item</b>	<b>[ECUC_Xcp_00192]</b>		
<b>Container Name</b>	XcpPage		
<b>Parent Container</b>	<a href="#">XcpSegment</a>		
<b>Description</b>	This container represents configuration of the optional page element.		
<b>Configuration Parameters</b>			

<b>SWS Item</b>	<b>[ECUC_Xcp_00193]</b>		
<b>Parameter Name</b>	XcpPageAddress		
<b>Parent Container</b>	<a href="#">XcpPage</a>		





<b>Description</b>	Memory address of the optional page (Page ID = 2 ... 255).		
<b>Multiplicity</b>	1		
<b>Type</b>	EcucLinkerSymbolDef		
<b>Default value</b>	–		
<b>maxLength</b>	–		
<b>minLength</b>	–		
<b>Regular Expression</b>	–		
<b>Value Configuration Class</b>	<b>Pre-compile time</b>	X	All Variants
	<b>Link time</b>	–	
	<b>Post-build time</b>	–	
<b>Scope / Dependency</b>	scope: local		

<b>No Included Containers</b>
-------------------------------

### 10.3 Published Information

For details refer to the chapter 10.3 “Published Information” in [2].

## A Not applicable requirements

**[SWS\_Xcp\_NA\_00999]** [These requirements are not applicable to this specification.] (*SRS\_BSW\_00171, SRS\_BSW\_00170, SRS\_BSW\_00375, SRS\_BSW\_00416, SRS\_BSW\_00168, SRS\_BSW\_00423, SRS\_BSW\_00425, SRS\_BSW\_00426, SRS\_BSW\_00427, SRS\_BSW\_00428, SRS\_BSW\_00432, SRS\_BSW\_00336, SRS\_BSW\_00417, SRS\_BSW\_00161, SRS\_BSW\_00162, SRS\_BSW\_00005, SRS\_BSW\_00415, SRS\_BSW\_00164, SRS\_BSW\_00325, SRS\_BSW\_00413, SRS\_BSW\_00347, SRS\_BSW\_00335, SRS\_BSW\_00410, SRS\_BSW\_00314, SRS\_BSW\_00328, SRS\_BSW\_00312, SRS\_BSW\_00006, SRS\_BSW\_00377, SRS\_BSW\_00306, SRS\_BSW\_00309, SRS\_BSW\_00360, SRS\_BSW\_00330, SRS\_BSW\_00331, SRS\_BSW\_00009, SRS\_BSW\_00401, SRS\_BSW\_00172, SRS\_BSW\_00010, SRS\_BSW\_00333, SRS\_BSW\_00321, SRS\_BSW\_00341, [SRS\\_Xcp\\_29008](#)*)



## B Change history of AUTOSAR traceable items

Please note that the lists in this chapter also include traceable items that have been removed from the specification in a later version. These items do not appear as hyperlinks in the document.

### B.1 Traceable item history of this document according to AUTOSAR Release R22-11

#### B.1.1 Added Specification Items in R22-11

Number	Heading
[SWS_Xcp_00102]	
[SWS_Xcp_00103]	
[SWS_Xcp_00104]	
[SWS_Xcp_00105]	
[SWS_Xcp_00501]	
[SWS_Xcp_00701]	
[SWS_Xcp_00702]	
[SWS_Xcp_00703]	
[SWS_Xcp_00705]	
[SWS_Xcp_00706]	
[SWS_Xcp_00707]	
[SWS_Xcp_00708]	
[SWS_Xcp_00709]	
[SWS_Xcp_00710]	
[SWS_Xcp_00711]	
[SWS_Xcp_00712]	
[SWS_Xcp_00713]	
[SWS_Xcp_00714]	
[SWS_Xcp_00715]	
[SWS_Xcp_00716]	
[SWS_Xcp_00718]	
[SWS_Xcp_00719]	
[SWS_Xcp_00720]	
[SWS_Xcp_00721]	
[SWS_Xcp_00722]	
[SWS_Xcp_00723]	
[SWS_Xcp_00724]	





Number	Heading
[SWS_Xcp_00725]	
[SWS_Xcp_00726]	
[SWS_Xcp_00728]	
[SWS_Xcp_00729]	
[SWS_Xcp_00730]	
[SWS_Xcp_00731]	
[SWS_Xcp_00732]	
[SWS_Xcp_00733]	
[SWS_Xcp_00734]	
[SWS_Xcp_00735]	
[SWS_Xcp_00736]	
[SWS_Xcp_00737]	
[SWS_Xcp_00738]	
[SWS_Xcp_00739]	
[SWS_Xcp_00740]	
[SWS_Xcp_00741]	
[SWS_Xcp_00742]	
[SWS_Xcp_00761]	
[SWS_Xcp_00763]	
[SWS_Xcp_00766]	
[SWS_Xcp_00768]	
[SWS_Xcp_00801]	Definition of imported datatypes of module Xcp
[SWS_Xcp_00802]	
[SWS_Xcp_00803]	Definition of API function Xcp_Init
[SWS_Xcp_00807]	Definition of API function Xcp_GetVersionInfo
[SWS_Xcp_00813]	Definition of callback function Xcp_<Lo>RxIndication
[SWS_Xcp_00814]	Definition of callback function Xcp_<Lo>TxConfirmation
[SWS_Xcp_00823]	Definition of scheduled function Xcp_MainFunction
[SWS_Xcp_00824]	
[SWS_Xcp_00825]	
[SWS_Xcp_00832]	Definition of optional interfaces in module Xcp
[SWS_Xcp_00835]	Definition of callback function Xcp_<Lo>TriggerTransmit
[SWS_Xcp_00836]	
[SWS_Xcp_00840]	
[SWS_Xcp_00841]	
[SWS_Xcp_00842]	
[SWS_Xcp_00843]	
[SWS_Xcp_00844]	Definition of callback function Xcp_SetTransmissionMode





Number	Heading
[SWS_Xcp_00845]	Definition of datatype Xcp_ConfigType
[SWS_Xcp_00846]	Definition of datatype Xcp_TransmissionModeType
[SWS_Xcp_00847]	
[SWS_Xcp_00848]	
[SWS_Xcp_00849]	
[SWS_Xcp_00850]	
[SWS_Xcp_00852]	
[SWS_Xcp_00853]	
[SWS_Xcp_00854]	
[SWS_Xcp_00855]	
[SWS_Xcp_00856]	
[SWS_Xcp_00857]	Definiton of development errors in module Xcp
[SWS_Xcp_00859]	
[SWS_Xcp_91001]	Definition of mandatory interfaces in module Xcp
[SWS_Xcp_NA_-00999]	

**Table B.1: Added Specification Items in R22-11**

### B.1.2 Changed Specification Items in R22-11

none

### B.1.3 Deleted Specification Items in R22-11

none

## B.2 Traceable item history of this document according to AUTOSAR Release R23-11

### B.2.1 Added Specification Items in R23-11

Number	Heading
[SWS_Xcp_00102]	
[SWS_Xcp_00103]	
[SWS_Xcp_00104]	
[SWS_Xcp_00105]	
[SWS_Xcp_00501]	
[SWS_Xcp_00701]	
[SWS_Xcp_00702]	
[SWS_Xcp_00703]	
[SWS_Xcp_00705]	
[SWS_Xcp_00706]	
[SWS_Xcp_00707]	
[SWS_Xcp_00708]	
[SWS_Xcp_00709]	
[SWS_Xcp_00710]	
[SWS_Xcp_00711]	
[SWS_Xcp_00712]	
[SWS_Xcp_00713]	
[SWS_Xcp_00714]	
[SWS_Xcp_00715]	
[SWS_Xcp_00716]	
[SWS_Xcp_00718]	
[SWS_Xcp_00719]	
[SWS_Xcp_00720]	
[SWS_Xcp_00721]	
[SWS_Xcp_00722]	
[SWS_Xcp_00723]	
[SWS_Xcp_00724]	
[SWS_Xcp_00725]	
[SWS_Xcp_00726]	
[SWS_Xcp_00728]	
[SWS_Xcp_00729]	
[SWS_Xcp_00730]	
[SWS_Xcp_00731]	





Number	Heading
[SWS_Xcp_00732]	
[SWS_Xcp_00733]	
[SWS_Xcp_00734]	
[SWS_Xcp_00735]	
[SWS_Xcp_00736]	
[SWS_Xcp_00737]	
[SWS_Xcp_00738]	
[SWS_Xcp_00739]	
[SWS_Xcp_00740]	
[SWS_Xcp_00741]	
[SWS_Xcp_00742]	
[SWS_Xcp_00761]	
[SWS_Xcp_00763]	
[SWS_Xcp_00766]	
[SWS_Xcp_00768]	
[SWS_Xcp_00801]	Definition of imported datatypes of module Xcp
[SWS_Xcp_00802]	
[SWS_Xcp_00803]	Definition of API function Xcp_Init
[SWS_Xcp_00807]	Definition of API function Xcp_GetVersionInfo
[SWS_Xcp_00813]	Definition of callback function Xcp_<Lo>RxIndication
[SWS_Xcp_00814]	Definition of callback function Xcp_<Lo>TxConfirmation
[SWS_Xcp_00823]	Definition of scheduled function Xcp_MainFunction
[SWS_Xcp_00824]	
[SWS_Xcp_00825]	
[SWS_Xcp_00832]	Definition of optional interfaces in module Xcp
[SWS_Xcp_00835]	Definition of callback function Xcp_<Lo>TriggerTransmit
[SWS_Xcp_00836]	
[SWS_Xcp_00840]	
[SWS_Xcp_00841]	
[SWS_Xcp_00842]	
[SWS_Xcp_00843]	
[SWS_Xcp_00844]	Definition of callback function Xcp_SetTransmissionMode
[SWS_Xcp_00845]	Definition of datatype Xcp_ConfigType
[SWS_Xcp_00846]	Definition of datatype Xcp_TransmissionModeType
[SWS_Xcp_00847]	
[SWS_Xcp_00848]	
[SWS_Xcp_00849]	
[SWS_Xcp_00850]	



△

Number	Heading
[SWS_Xcp_00852]	
[SWS_Xcp_00853]	
[SWS_Xcp_00854]	
[SWS_Xcp_00855]	
[SWS_Xcp_00856]	
[SWS_Xcp_00857]	Definiton of development errors in module Xcp
[SWS_Xcp_00859]	
[SWS_Xcp_91001]	Definition of mandatory interfaces in module Xcp
[SWS_Xcp_NA_-00999]	

**Table B.2: Added Specification Items in R23-11**

### B.2.2 Changed Specification Items in R23-11

none

### B.2.3 Deleted Specification Items in R23-11

none