

Document Title	Specification of Network Management for SAE J1939
Document Owner	AUTOSAR
Document Responsibility	AUTOSAR
Document Identification No	612

Document Status	published
Part of AUTOSAR Standard	Classic Platform
Part of Standard Release	R21-11

Document Change History			
Date	Release	Changed by	Change Description
2021-11-25	R21-11	AUTOSAR Release Management	<ul style="list-style-type: none"> No content changes
2020-11-30	R20-11	AUTOSAR Release Management	<ul style="list-style-type: none"> Improved structure of error sections Replaced error descriptions with generated tables
2019-11-28	R19-11	AUTOSAR Release Management	<ul style="list-style-type: none"> Clarification of AC transmission Constraint regarding detection of address conflicts Changed Document Status from Final to published
2018-10-31	4.4.0	AUTOSAR Release Management	<ul style="list-style-type: none"> Changed header file structure Harmonized J1939NM_E_UNINIT
2017-12-08	4.3.1	AUTOSAR Release Management	<ul style="list-style-type: none"> Fixed include hierarchy Removed multiple configuration container
2016-11-30	4.3.0	AUTOSAR Release Management	<ul style="list-style-type: none"> Address coordination for gateways Improved handling of meta data Reliable TxConfirmation replaces timeout SetEventStatus replaces ReportErrorStatus
2015-07-31	4.2.2	AUTOSAR Release Management	<ul style="list-style-type: none"> Support for networks without address claiming Fixed state notifications to BswM Introduction of further error classes

Document Change History			
Date	Release	Changed by	Change Description
2014-10-31	4.2.1	AUTOSAR Release Management	<ul style="list-style-type: none"> Enhanced description of extended production error J1939NM_E_ADDRESS_LOST Fixed usage of 'const' in NM APIs Harmonized with SWS BSW General
2014-03-31	4.1.3	AUTOSAR Release Management	<ul style="list-style-type: none"> Introduction of random delays Fixed state diagram Removed configurable dummy APIs
2013-10-31	4.1.2	AUTOSAR Release Management	<ul style="list-style-type: none"> Additional development errors for function parameter checks Removed change documentation
2013-03-15	4.1.1	AUTOSAR Administration	<ul style="list-style-type: none"> Initial Release

Disclaimer

This work (specification and/or software implementation) and the material contained in it, as released by AUTOSAR, is for the purpose of information only. AUTOSAR and the companies that have contributed to it shall not be liable for any use of the work.

The material contained in this work is protected by copyright and other types of intellectual property rights. The commercial exploitation of the material contained in this work requires a license to such intellectual property rights.

This work may be utilized or reproduced without any modification, in any form or by any means, for informational purposes only. For any other purpose, no part of the work may be utilized or reproduced, in any form or by any means, without permission in writing from the publisher.

The work has been developed for automotive applications only. It has neither been developed, nor tested for non-automotive applications.

The word AUTOSAR and the AUTOSAR logo are registered trademarks.

Table of Contents

1	Introduction and functional overview	6
1.1	Network Management according to SAE J1939.....	6
1.2	J1939 Network Management BSW Module.....	6
2	Acronyms and abbreviations.....	7
3	Related documentation	8
3.1	Input documents.....	8
3.2	Related standards and norms.....	9
3.3	Related specification.....	9
4	Constraints and assumptions.....	10
4.1	Limitations	10
4.2	Applicability to car domains	10
5	Dependencies to other modules	11
5.1	File structure	11
5.1.1	Code file structure	11
5.1.2	Header file structure	11
6	Requirements traceability	12
7	Functional specification.....	13
7.1	Overview	13
7.2	Module Handling	13
7.2.1	Initialization.....	13
7.2.2	Timing Related Functionality.....	13
7.3	Network Management States of the J1939Nm.....	14
7.3.1	ECU Startup	15
7.3.2	Address Loss.....	16
7.3.3	ECU Shutdown.....	17
7.4	Transmission of AddressClaimed.....	17
7.5	Reception of AddressClaimed	18
7.6	Request for AddressClaimed.....	19
7.7	Address Coordination	19
7.8	Error Classification.....	20
7.8.1	Development Errors	20
7.8.2	Runtime Errors	21
7.8.3	Transient Faults.....	21
7.8.4	Production Errors	21
7.8.5	Extended Production Errors.....	21
8	API specification.....	23
8.1	API Parameter Checking	23
8.2	Imported types	23
8.3	Type definitions	24
8.3.1	J1939Nm_ConfigType	24
8.4	Function definitions	24
8.4.1	J1939Nm_Init	24
8.4.2	J1939Nm_DeInit.....	25

8.4.3	J1939Nm_GetVersionInfo.....	26
8.4.4	J1939Nm_NetworkRequest.....	26
8.4.5	J1939Nm_NetworkRelease.....	27
8.4.6	J1939Nm_GetState.....	27
8.4.7	J1939Nm_GetBusOffDelay.....	28
8.4.8	J1939Nm_PassiveStartUp.....	29
8.5	Call-back notifications.....	29
8.5.1	J1939Nm_RxIndication.....	30
8.5.2	J1939Nm_TxConfirmation.....	30
8.5.3	J1939Nm_RequestIndication.....	31
8.6	Scheduled functions.....	32
8.6.1	J1939Nm_MainFunction.....	32
8.7	Expected Interfaces.....	33
8.7.1	Mandatory Interfaces.....	33
8.7.2	Optional Interfaces.....	33
8.7.3	Configurable interfaces.....	34
9	Sequence diagrams.....	35
9.1	Transmission of AddressClaimed.....	35
9.2	Reception of AddressClaimed.....	35
9.3	Request for AddressClaimed.....	36
10	Configuration specification.....	37
10.1	Containers and configuration parameters.....	37
10.1.1	J1939Nm.....	41
10.1.2	J1939NmGeneral.....	42
10.1.3	J1939NmConfigSet.....	44
10.1.4	J1939NmSharedAddressSpace.....	44
10.1.5	J1939NmChannel.....	45
10.1.6	J1939NmTxPdu.....	46
10.1.7	J1939NmRxPdu.....	47
10.1.8	J1939NmNodeSpecificDemEventParameterRefs.....	48
10.1.9	J1939NmNode.....	49
10.1.10	J1939NmExternalNode.....	52
10.2	Configuration of NM Interface.....	56
10.3	Published Information.....	57

1 Introduction and functional overview

This specification specifies the functionality, API and the configuration of the AUTOSAR Basic Software module J1939 Network Management.

1.1 Network Management according to SAE J1939

In contrast to other AUTOSAR network management approaches, the task of J1939 network management is not to handle sleep and wake-up of ECUs, but to assign a unique address to each ECU.

This is achieved by sending the AddressClaimed (AC, 0x0EE00) parameter group (PG) at start-up, which announces the desired address. If another ECU claims the same address, and has higher priority, the ECU has to go silent after sending the CannotClaimAddress parameter group (AC with null address 0xFE as source address). The AddressClaimed PG must also be sent upon request.

1.2 J1939 Network Management BSW Module

The J1939 Network Management module (J1939Nm) handles received and transmitted AddressClaimed (AC) PGs. It supports transmission of AC on start-up, after a contending AC received from another node, and on request (triggered by the J1939 Request Manager).

Besides this, the J1939 Network Management module also ensures that the ECU does not send any messages during startup or after address loss.

2 Acronyms and abbreviations

Abbreviation / Acronym:	Description:
AC	J1939 AddressClaimed PG (PGN = 0x0EE00)
BSW	Basic Software (module)
DET	Default Error Tracer, supports development and runtime error reporting
Node	J1939 node – can be attached to more than one channel
NodeChannel	The connection of a node to one channel
PG	Parameter Group
PGN	Parameter Group Number
RQST	J1939 Request PG (PGN = 0x0EA00)

3 Related documentation

3.1 Input documents

- [1] List of Basic Software Modules
AUTOSAR_TR_BSWModuleList.pdf

- [2] Layered Software Architecture
AUTOSAR_EXP_LayeredSoftwareArchitecture.pdf

- [3] General Requirements on Basic Software Modules
AUTOSAR_SRS_BSWGeneral.pdf

- [4] General Specification of Basic Software Modules
AUTOSAR_SWS_BSWGeneral.pdf

- [5] Requirements on BSW Modules for SAE J1939
AUTOSAR_SRS_J1939.pdf

- [6] Requirements on Network Management
AUTOSAR_SRS_J1939.pdf

- [7] Specification of Communication Stack Types
AUTOSAR_SWS_CommunicationStackTypes.pdf

- [8] System Template
AUTOSAR_TPS_SystemTemplate.pdf

- [9] Specification of CAN Interface
AUTOSAR_SWS_CANInterface.pdf

- [10] Specification of Network Management Interface
AUTOSAR_SWS_NetworkManagementInterface.pdf

- [11] Specification of Basic Software Mode Manager
AUTOSAR_SWS_BSWModeManager.pdf

- [12] Specification of a Request Manager for SAE J1939
AUTOSAR_SWS_SAEJ1939RequestManager.pdf

- [13] Specification of Default Error Tracer
AUTOSAR_SWS_DefaultErrorTracer.pdf

- [14] Specification of Diagnostic Event Manager
AUTOSAR_SWS_DiagnosticEventManager.pdf

- [15] Specification of BSW Scheduler
AUTOSAR_SWS_BWScheduler.pdf

[16] Specification of ECU Configuration
AUTOSAR_TPS_ECUConfiguration.pdf

[17] Specification of Memory Mapping
AUTOSAR_SWS_MemoryMapping.pdf

3.2 Related standards and norms

[18] J1939-81 JUN2011, Network Management

3.3 Related specification

AUTOSAR provides a General Specification on Basic Software modules [4] (SWS BSW General), which is also valid for the SAE J1939 Network Management module.

Thus, the specification SWS BSW General shall be considered as additional and required specification for SAE J1939 Transport Layer.

4 Constraints and assumptions

4.1 Limitations

The J1939 Network Management module does not support all features defined in [18], especially:

- Changing the address of a node after reception of CommandedAddress or after an address loss.
- Changing the NAME of a node using the Name Management protocol.
- Detection of address violations by messages other than AddressClaimed.

4.2 Applicability to car domains

J1939 is developed by the SAE as a standard for heavy-duty on-highway, farming, and construction vehicles. It is not applicable to passenger cars or light trucks.

5 Dependencies to other modules

The J1939 Network Management module (J1939Nm) has interfaces towards the CAN Interface (CanIf), the J1939 Request Manager (J1939Rm), the Network Management Interface (Nm), the Diagnostic Event Manager (DEM), and the Default Error Tracer (DET).

The J1939 Network Management module includes header files of the CAN Interface, the Network Management Interface, the J1939 Request Manager, the Diagnostic Event Manager, and the Default Error Tracer.

5.1 File structure

5.1.1 Code file structure

For details, refer to the section 5.1.6 "Code file structure" of the SWS BSW General [4].

5.1.2 Header file structure

For details, refer to the section 5.1.7 "Header file structure" of the SWS BSW General [4].

6 Requirements traceability

Requirement	Description	Satisfied by
SRS_BSW_00407	Each BSW module shall provide a function to read out the version information of a dedicated module implementation	SWS_J1939Nm_00033
SRS_J1939_00030	The J1939 Network Management module shall provide an interface for module initialization	SWS_J1939Nm_00002, SWS_J1939Nm_00007, SWS_J1939Nm_00031
SRS_J1939_00031	The J1939 Network Management module shall provide an interface for module shutdown	SWS_J1939Nm_00003, SWS_J1939Nm_00032
SRS_J1939_00032	The J1939 Network Management module shall report a failed address claim to the Diagnostic Event Manager	SWS_J1939Nm_00012
SRS_J1939_00033	The J1939 Network Management module shall perform an initial address claim at startup	SWS_J1939Nm_00009, SWS_J1939Nm_00016, SWS_J1939Nm_00017, SWS_J1939Nm_00019, SWS_J1939Nm_00062
SRS_J1939_00034	The J1939 Network Management module shall react correctly to contending address claims	SWS_J1939Nm_00014, SWS_J1939Nm_00016, SWS_J1939Nm_00017, SWS_J1939Nm_00018, SWS_J1939Nm_00019, SWS_J1939Nm_00020, SWS_J1939Nm_00021, SWS_J1939Nm_00062
SRS_J1939_00035	The J1939 Network Management module shall react to requests for the AddressClaimed PG	SWS_J1939Nm_00016, SWS_J1939Nm_00017, SWS_J1939Nm_00018, SWS_J1939Nm_00019, SWS_J1939Nm_00022, SWS_J1939Nm_00023, SWS_J1939Nm_00043, SWS_J1939Nm_00062
SRS_J1939_00036	The J1939 Network Management module shall only allow communication after a successful address claim	SWS_J1939Nm_00010, SWS_J1939Nm_00011, SWS_J1939Nm_00015, SWS_J1939Nm_00021, SWS_J1939Nm_00044, SWS_J1939Nm_00045, SWS_J1939Nm_00063, SWS_J1939Nm_00064, SWS_J1939Nm_00065, SWS_J1939Nm_00066
SRS_J1939_00037	The J1939 Network Management module shall delay communication after initial address claim	SWS_J1939Nm_00010, SWS_J1939Nm_00013, SWS_J1939Nm_00061, SWS_J1939Nm_00063

7 Functional specification

This chapter defines the behavior of the J1939 Network Management module. The API of the module is defined in chapter 8, while the configuration is defined in chapter 10.

7.1 Overview

The J1939 Network Management module supports transmission and reception of AddressClaimed PGs, and handling of requests for the AddressClaimed PG. It also ensures that the ECU does not send messages during the initial address claiming phase or after the ECU sent a CannotClaimAddress PG because it lost its address to a contending address claim.

7.2 Module Handling

This section contains description of auxiliary functionality of the J1939 Network Management module.

7.2.1 Initialization

The J1939 Network Management module is initialized via J1939Nm_Init, and de-initialized via J1939Nm_DelInit. Except for J1939Nm_GetVersionInfo and J1939Nm_Init, the API functions of the J1939 Network Management module may only be called after the module has been properly initialized.

[SWS_J1939Nm_00002] [A call to J1939Nm_Init initializes all internal variables and sets the J1939 Network Management module to the initialized state.] (SRS_J1939_00030)

[SWS_J1939Nm_00003] [A call to J1939Nm_DelInit sets the J1939 Network Management module back to the uninitialized state.] (SRS_J1939_00031)

[SWS_J1939Nm_00005] [When J1939Nm_Init is called in initialized state, the J1939 Network Management module shall not re-initialize its internal variables. It shall instead call Det_ReportError with the error code J1939NM_E_REINIT if DET reporting is enabled via J1939NmDevErrorDetect.] ()

7.2.2 Timing Related Functionality

To be able to measure times, the J1939 Network Management module is triggered cyclically via the J1939Nm_MainFunction.

[SWS_J1939Nm_00006] [The J1939 Network Management module shall use the J1939Nm_MainFunction for timing related purposes.] ()

The recovery after a bus off must be delayed by a random time to avoid repeating bus offs when two nodes try to claim the same address. This random delay is also

required when sending a CannotClaimAddress PG after a contending address claim or after a request for the AddressClaimed PG.

[SWS_J1939Nm_00068] [The J1939Nm shall calculate a random number for delaying bus off recovery and transmission of a CannotClaimAddress PG. The calculation shall use the NAME of a node as seed.] ()

[SWS_J1939Nm_00069] [When J1939Nm_GetBusOffDelay is called, J1939Nm shall return a random number based on the NAMEs of all nodes attached to the reported channel. This random number gives the delay time, based on the ticktime configured via J1939NmBusOffDelayTickPeriod.] ()

7.3 Network Management States of the J1939Nm

While the NM Interface handles network management states on channel level, the J1939 Network Management module needs a finer granularity, because several nodes can be attached to each channel. The connection of a node to one channel is called NodeChannel hereafter.

The following picture shows the internal NM related states of the J1939 Network Management module for one of its NodeChannels (i.e. one channel of a single node), and the transitions between these states:

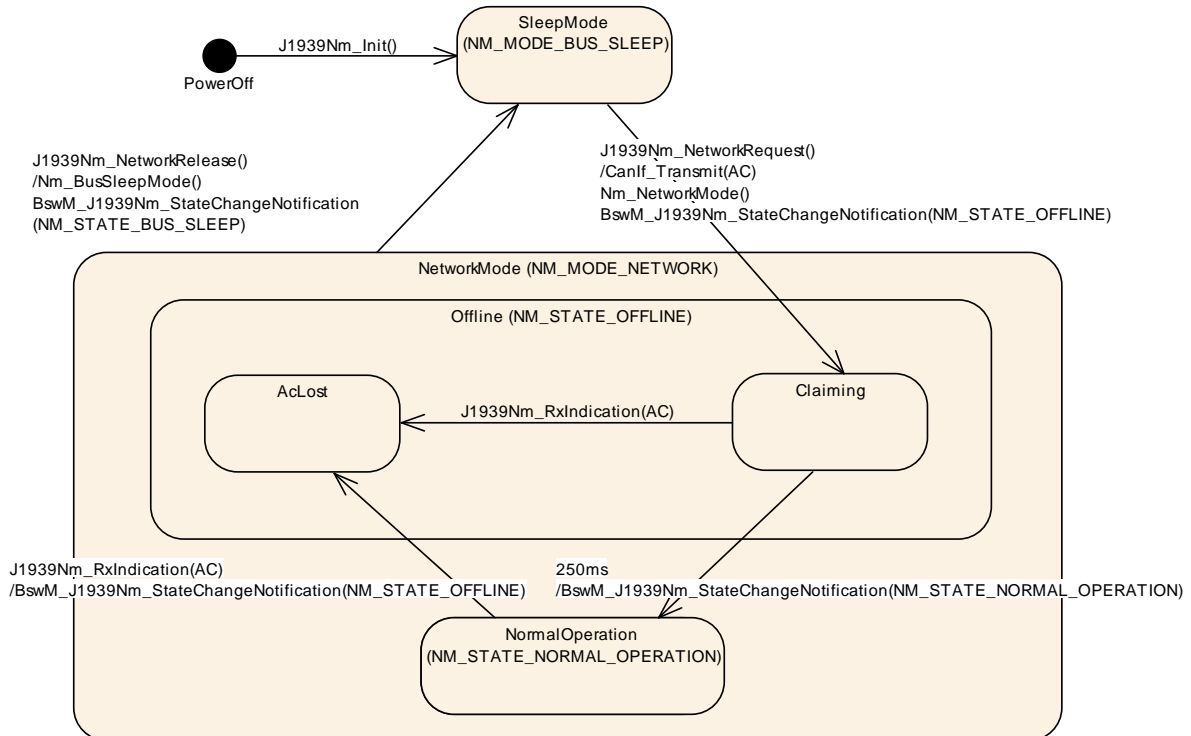


Figure 1: Internal states of J1939Nm with startup delay

The J1939 Network Management module reports state changes to the NM Interface and to the Basic Software Mode Manager (BswM).

While the states reported to the NM Interface are accumulated states of all NodeChannels of a CAN channel, the J1939 Network Management module reports states to the BswM separately for each NodeChannel.

7.3.1 ECU Startup

The J1939 Network Management module starts all NodeChannels in 'SleepMode' (corresponding to NM_MODE_BUS_SLEEP). The CAN channels will be switched to 'NetworkMode' (corresponding to NM_MODE_NETWORK) immediately afterwards by a network request issued from the ComM via NM Interface.

[SWS_J1939Nm_00007] [During initialization via J1939Nm_Init, the J1939 Network Management module shall silently assume the 'SleepMode' for all NodeChannels.] (SRS_J1939_00030)

[SWS_J1939Nm_00009] [A call to J1939Nm_NetworkRequest shall set all NodeChannels of the reported channel to 'NetworkMode'. The J1939 Network Management module shall notify this mode change to the NM Interface via Nm_NetworkMode, and shall trigger transmission of an AddressClaimed PG for each NodeChannel where J1939NmChannelUsesAddressArbitration is enabled.] (SRS_J1939_00033)

The transmission of the AddressClaimed PG is described in detail in section 7.4.

When entering the network mode, the behavior of the J1939 Network Management module depends on the configuration parameter J1939NmNodeStartupDelay. Controlled by this parameter, the J1939 Network Management module switches the state of the affected NodeChannels either to the sub state 'Claiming' of the state 'Offline' (corresponding to NM_STATE_OFFLINE), or to the state 'NormalOperation' (corresponding to NM_STATE_NORMAL_OPERATION).

[SWS_J1939Nm_00010] [If a node of the J1939 Network Management module is configured for deferred online state (J1939NmNodeStartUpDelay enabled), its NodeChannels shall enter the sub state 'Claiming' of the state 'Offline' immediately after the switch from 'SleepMode' to 'NetworkMode'. The J1939 Network Management module shall report this state change to the Basic Software Mode Manager via BswM_J1939Nm_StateChangeNotification(NM_STATE_OFFLINE).] (SRS_J1939_00036, SRS_J1939_00037)

[SWS_J1939Nm_00011] [If a node of the J1939 Network Management module is configured for immediate online state (J1939NmNodeStartUpDelay disabled), its NodeChannels shall enter the state 'NormalOperation' immediately after the switch from 'SleepMode' to 'NetworkMode'. The J1939 Network Management module shall report this state change to the Basic Software Mode Manager via BswM_J1939Nm_StateChangeNotification(NM_STATE_NORMAL_OPERATION).] (SRS_J1939_00036)

The NM Interface expects an accumulated channel state.

[SWS_J1939Nm_00063] [When all NodeChannels of a channel are configured for deferred online state (J1939NmNodeStartUpDelay enabled), the J1939 Network Management module shall report the state change of these NodeChannels to the 'Offline' state immediately to the NM Interface via Nm_StateChangeNotification(NM_STATE_OFFLINE).] (SRS_J1939_00036, SRS_J1939_00037)

[SWS_J1939Nm_00064] [When the first NodeChannel of a channel changes its state to 'NormalOperation', the J1939 Network Management module shall report this state change immediately to the NM Interface via Nm_StateChangeNotification(NM_STATE_NORMAL_OPERATION).] (SRS_J1939_00036)

When a NodeChannel has stayed for 250ms in state 'Claiming' after transmission of the initial AddressClaimed PG, it will switch to state 'NormalOperation'.

[SWS_J1939Nm_00061] [When J1939Nm_TxConfirmation is called with result E_OK for the initial AddressClaimed PG of a NodeChannel (transmitted during the transition to the 'Claiming' sub state), the J1939 Network Management module shall start the delay timer for this NodeChannel.] (SRS_J1939_00037)

[SWS_J1939Nm_00013] [When the delay timer of a NodeChannel expires in sub state 'Claiming', the J1939 Network Management module shall switch that NodeChannel to state 'NormalOperation' and shall report this state change to the Basic Software Mode Manager via BswM_J1939Nm_StateChangeNotification(NM_STATE_NORMAL_OPERATION).] (SRS_J1939_00037)

7.3.2 Address Loss

When a node of the J1939 Network Management module loses its claimed address on one of its channels (see section 7.5), it will switch that NodeChannel to the sub state 'AcLost' of state 'Offline', notifying the NM Interface and the BswM of this state change and sending a CannotClaimAddress PG for the losing node on that channel (see section 7.4).

[SWS_J1939Nm_00014] [When a NodeChannel loses its address in 'NetworkMode', it shall switch to the sub state 'AcLost' of state 'Offline' and, after a delay calculated according to [SWS_J1939Nm_00068], trigger transmission of a CannotClaimAddress PG.] (SRS_J1939_00034)

[SWS_J1939Nm_00065] [When a NodeChannel switches from state 'NormalOperation' to the sub state 'AcLost' of state 'Offline', the J1939 Network Management module shall notify the Basic Software Mode Manager via BswM_J1939Nm_StateChangeNotification(NM_STATE_OFFLINE).] (SRS_J1939_00036)

[SWS_J1939Nm_00066] [When the last NodeChannel of a channel changes its state to 'Offline', the J1939 Network Management module shall report this state change immediately to the NM Interface via Nm_StateChangeNotification(NM_STATE_OFFLINE).] (SRS_J1939_00036)

7.3.3 ECU Shutdown

To shut down the network, ComM calls the Nm_NetworkRelease API of the NM Interface, which in turn calls J1939Nm_NetworkRelease. The J1939 Network Management module will then switch to 'SleepMode', and notify this to the NM Interface.

[SWS_J1939Nm_00015] [A call to J1939Nm_NetworkRelease shall set all NodeChannels of the reported channel to 'SleepMode'. The J1939 Network Management module shall notify this mode change to the NM Interface via Nm_BusSleepMode, and shall report a state change to 'SleepMode' to the NM Interface via Nm_StateChangeNotification(NM_STATE_BUS_SLEEP) and to BswM via BswM_J1939Nm_StateChangeNotification(NM_STATE_BUS_SLEEP).] (SRS_J1939_00036)

7.4 Transmission of AddressClaimed

For each NodeChannel, the J1939 Network Management module needs to ensure that a contending AddressClaimed PG or a request for AddressClaimed is answered by at least one AddressClaimed PG. If an AddressClaimed PG is still pending for that NodeChannel, but now a CannotClaimAddress PG must be sent, it suffices to send the CannotClaimAddress. Therefore, a single buffer per NodeChannel that stores only the last transmission request is sufficient.

For the transmission of both the AddressClaimed and the CannotClaimAddress PG, the J1939 Network Management module uses just one PDU per channel with variable source address contained in the meta data of the PDU.

[SWS_J1939Nm_00016] [When the J1939 Network Management module needs to send an AddressClaimed (or CannotClaimAddress) PG, and no previous transmission is pending, it shall directly forward the corresponding PDU to the CAN Interface via CanIf_Transmit.] (SRS_J1939_00033, SRS_J1939_00034, SRS_J1939_00035)

[SWS_J1939Nm_00073] [The J1939 Network Management module shall use a meta data item of type CAN_ID_32 to provide the source address of transmitted AddressClaimed and CannotClaimAddress PGs. The source address resides in the last (least significant) byte of the meta data item.] ()

[SWS_J1939Nm_00017] [When the J1939 Network Management module needs to send an AddressClaimed (or CannotClaimAddress) PG, and the CAN Interface has not yet called J1939Nm_TxConfirmation for the previous transmission, the J1939 Network Management module shall buffer this PG for later transmission.] (SRS_J1939_00033, SRS_J1939_00034, SRS_J1939_00035)

[SWS_J1939Nm_00018] [Apart from the initial AddressClaimed PG, the J1939 Network Management module shall buffer only the latest AddressClaimed or CannotClaimAddress PG.] (SRS_J1939_00034, SRS_J1939_00035)

Rationale: The initial AddressClaimed PG must be transmitted before any CannotClaimAddress PG according to [18]. Otherwise, the J1939 Network Management module should report current state even if the original request preceded a state change.

[SWS_J1939Nm_00019] [A call to J1939Nm_TxConfirmation with result E_OK shall trigger transmission of a buffered AddressClaimed or CannotClaimAddress PG via CanIf_Transmit.] (SRS_J1939_00033, SRS_J1939_00034, SRS_J1939_00035)

[SWS_J1939Nm_00062] [When CanIf_Transmit returns with E_NOT_OK or when J1939Nm_TxConfirmation is called with result E_NOT_OK, the transmission of that PG shall be triggered again.] (SRS_J1939_00033, SRS_J1939_00034, SRS_J1939_00035)

7.5 Reception of AddressClaimed

The source address of received AddressClaimed PGs must be immediately compared to the source addresses of all NodeChannels attached to the same channel (see J1939NmNodePreferredAddress). If any of these matches, the payload of the received PG must be compared to the configured NAME for the matching source address (see J1939NmNodeNameXxx), and depending on the relative priority, the J1939 Network Management module must send an AddressClaimed or a CannotClaimAddress PG. The priority is determined by the numerical value of the NAME.

To be able to identify the source address, the PDU associated with the AddressClaimed PG shall have a variable source address contained in the meta data of the PDU. In addition, the priority needs to be ignored for this PDU.

[SWS_J1939Nm_00074] [The J1939 Network Management module shall use a meta data item of type CAN_ID_32 to determine the source address of received AddressClaimed and CannotClaimAddress PGs. The source address resides in the last (least significant) byte of the meta data item.] ()

[SWS_J1939Nm_00020] [If J1939NmChannelUsesAddressArbitration is enabled, a call to J1939Nm_RxIndication indicating reception of an AddressClaimed PG with one of the source addresses configured via J1939NmNodePreferredAddress and a payload that has a higher numerical value than the NAME for this source address configured via J1939NmNodeNameXxx shall trigger transmission of an AddressClaimed PG for the according NodeChannel (see section 7.4).] (SRS_J1939_00034)

[SWS_J1939Nm_00021] [If J1939NmChannelUsesAddressArbitration is enabled, a call to J1939Nm_RxIndication indicating reception of an AddressClaimed PG with

one of the source addresses configured via J1939NmNodePreferredAddress and a payload that has a lower numerical value than the NAME for this source address configured via J1939NmNodeNameXxx shall induce a state change of the according NodeChannel to the sub state 'AcLost' of state 'Offline'.] (SRS_J1939_00034, SRS_J1939_00036)

The state change to 'Offline' will be notified to the NM Interface and the Basic Software Mode Manager and will trigger transmission of a CannotClaimAddress PG (see section 7.3.2).

Sometimes, the application needs to know the content of all address claimed messages on the bus, e.g. to build up a table that maps functions to addresses. The J1939 Network Management module shall support this use case via a generic call-out function (see section 8.7.3.1).

[SWS_J1939Nm_00060] [If enabled via J1939NmUserCallout, the J1939Nm shall forward the source address and the content of each AddressClaimed PG to the call-out function <User_AddressClaimedIndication> (see [SWS J1939Nm_00028](#)).] ()

7.6 Request for AddressClaimed

When the J1939 Network Management module receives a request for the AddressClaimed PGN from the J1939 Request Manager, it will answer either with an AddressClaimed or with a CannotClaimAddress PG, depending on the current state (see below).

Independent of the request being global or specific, the transmitted PG is always global.

[SWS_J1939Nm_00022] [A call to J1939Nm_RequestIndication shall trigger transmission of an AddressClaimed PG when the addressed NodeChannel is in state 'NormalOperation' or sub state 'Claiming' of state 'Offline'.] (SRS_J1939_00035)

[SWS_J1939Nm_00023] [A call to J1939Nm_RequestIndication shall trigger transmission of a CannotClaimAddress PG after a delay calculated according to [SWS_J1939Nm_00068] when the addressed NodeChannel is in sub state 'AcLost' of state 'Offline'.] (SRS_J1939_00035)

The J1939Nm_RequestIndication will never be triggered in state 'SleepMode', because then no CAN messages can be received.

7.7 Address Coordination

The J1939 Network Management module is able to coordinate the addresses of different J1939 channels connected to a gateway, so that routed messages have valid addresses on every bus on which they appear.

There are two basic strategies:

1. Several J1939 channels form one common address space. In this scenario, the J1939 Network Management module replicates all AddressClaimed messages appearing on one of the networks on all other networks of the same address space. Nodes connected via the gateway perform a direct arbitration of addresses.
2. Selected nodes of one channel appear also on one or more other channels. In this scenario, the J1939 Network Management Module claims the addresses of configured external nodes. Address arbitration is performed between the gateway and the nodes on one channel.

A single gateway can combine both strategies for different sets of channels. The main difference of the strategies is that addresses are not shared in the second strategy, and therefore more than 254 nodes can be present within one system.

[SWS_J1939Nm_00071] [If gateway support is enabled via J1939NmGatewaySupport, and the configuration contains a J1939NmSharedAddressSpace, the J1939Nm shall transmit all AddressClaimed messages received on one of the channels referenced by J1939NmSharedAddressSpace on all other channels referenced by the same J1939NmSharedAddressSpace.] ()

[SWS_J1939Nm_00072] [If gateway support is enabled via J1939NmGatewaySupport, and the configuration contains a J1939NmExternalNode, the channels referenced by J1939NmExternalNodeGatewayedChannelRef shall be treated like internal node channels, with the difference that the state transition from SleepMode to NetworkMode is triggered by the reception of an AddressClaimed message from the external node and enters NormalOperation immediately, and the transition to SleepMode is triggered by the reception of a CannotClaimAddress message from the same node.] ()

7.8 Error Classification

Section 7.2 "Error Handling" of the document "General Specification of Basic Software Modules" [4] describes the error handling of the Basic Software in detail. Above all, it constitutes a classification scheme consisting of five error types which may occur in BSW modules.

Based on this foundation, this section specifies particular errors arranged in the respective subsections below.

7.8.1 Development Errors

[SWS_J1939Nm_00024]

<i>Type of error</i>	<i>Related error code</i>	<i>Error value</i>
An API was called while the module was uninitialized	J1939NM_E_UNINIT	0x01
The Init API was called twice	J1939NM_E_REINIT	0x02

J1939Nm_Init was called with an invalid configuration pointer	J1939NM_E_INIT_FAILED	0x03
An API service was called with a NULL pointer	J1939NM_E_PARAM_POINTER	0x10
An API service was called with a wrong ID	J1939NM_E_INVALID_PDU_SDU_ID	0x11
An API service was called with wrong network handle	J1939NM_E_INVALID_NETWORK_ID	0x12
An API was called with an unsupported PGN	J1939NM_E_INVALID_PGN	0x13
An API was called with an illegal priority	J1939NM_E_INVALID_PRIO	0x14
An API was called with an illegal node address	J1939NM_E_INVALID_ADDRESS	0x15
An API was called with an illegal node ID	J1939NM_E_INVALID_NODE	0x16

]()

7.8.2 Runtime Errors

Runtime errors have not yet been classified.

7.8.3 Transient Faults

There are no transient faults.

7.8.4 Production Errors

There are no production errors.

7.8.5 Extended Production Errors

Extended production errors are handled as events of the Diagnostic Event Manager. The event IDs are defined in the following tables, while the actual values are assigned externally by the configuration of the Diagnostic Event Manager, and are included in the J1939 Network Management module via Dem.h.

[SWS_J1939Nm_00012] [

Error Name:	J1939NM_E_ADDRESS_LOST	
Short Description:	The desired address could not be claimed.	
Long Description:	During start-up of the ECU, all J1939Nm nodes need to send an address claim to the bus and wait for acceptance of the claimed address. If another ECU claims the same address and has a higher priority, the ECU loses its address and stops communication. This is a critical problem, because J1939Nm was not specified for networks where this can happen.	
Detection Criteria:	Fail	When address claiming failed, because an AddressClaimed message with higher priority was

		received (see [SWS_J1939Nm_00021]), the J1939 Network Management module shall report the extended production error J1939NM_E_ADDRESS_LOST with event status DEM_EVENT_STATUS_PREFAILED to DEM.
	Pass	When address claiming succeeded, because the J1939 Network Management entered the state 'NormalOperation' (see [SWS_J1939Nm_00011] and [SWS_J1939Nm_00013]), the J1939 Network Management module shall report the extended production error J1939NM_E_ADDRESS_LOST with event status DEM_EVENT_STATUS_PREPASED to DEM.
Secondary Parameters:	Address claiming is started when a node enters NetworkMode for a channel.	
Time Required:	Typically 250ms after changing to NetworkMode, but possible during entire run time when addresses can change at run time or ECUs are attached later (or wake up later).	
Monitor Frequency	The bus is continuously monitored for AddressClaimed messages.	

] (SRS_J1939_00032)

8 API specification

8.1 API Parameter Checking

The J1939 Network Management module performs parameter checks for all called APIs. It reports the development error J1939NM_E_INVALID_PDU_SDU_ID when a check of a PDU/SDU ID fails, J1939NM_E_INVALID_NETWORK_ID when a check of a network handle fails, and J1939NM_E_PARAM_POINTER when a call provides a NULL pointer.

[SWS_J1939Nm_00025] [If DET reporting is enabled via J1939NmDevErrorDetect, the J1939 Network Management module shall check PduIdType parameters (SDU/PDU IDs) of its API functions against the configured IDs, and shall report the development error J1939NM_E_INVALID_PDU_SDU_ID when an unknown ID is provided by the call.] ()

[SWS_J1939Nm_00026] [If DET reporting is enabled via J1939NmDevErrorDetect, the J1939 Network Management module shall check NetworkHandleType parameters (network handles) of its API functions against the referenced network handles of ComM, and shall report the development error J1939NM_E_INVALID_NETWORK_ID when an unknown handle is provided by the call.] ()

J1939NM_E_PARAM_POINTER shall be reported as specified in [4] by SWS_BSW_00212.

8.2 Imported types

In this section, all types used by the J1939 Network Management module are listed together with the defining module:

[SWS_J1939Nm_00029]

<i>Module</i>	<i>Header File</i>	<i>Imported Type</i>
ComStack_Types	ComStack_Types.h	NetworkHandleType
	ComStack_Types.h	PduIdType
	ComStack_Types.h	PduInfoType
	ComStack_Types.h	PduLengthType
Dem	Rte_Dem_Type.h	Dem_EventIdType
	Rte_Dem_Type.h	Dem_EventStatusType
J1939Rm	Rte_J1939Rm_Type.h	J1939Rm_ExtIdInfoType
	Rte_J1939Rm_Type.h	J1939Rm_ExtIdType
Nm	NmStack_types.h	Nm_ModeType

	NmStack_types.h	Nm_StateType
Std	Std_Types.h	Std_ReturnType
	Std_Types.h	Std_VersionInfoType

]()

8.3 Type definitions

8.3.1 J1939Nm_ConfigType

[SWS_J1939Nm_00030]

Name	J1939Nm_ConfigType	
Kind	Structure	
Elements	implementation specific	
	Type	--
	Comment	--
Description	This is the base type for the configuration of the J1939 Network Management module. A pointer to an instance of this structure will be used in the initialization of the J1939 Network Management module. The content of this structure is defined in chapter 10 Configuration specification.	
Available via	J1939Nm.h	

]()

8.4 Function definitions

This is a list of functions provided for upper layer modules.

8.4.1 J1939Nm_Init

[SWS_J1939Nm_00031]

Service Name	J1939Nm_Init
Syntax	<pre>void J1939Nm_Init (const J1939Nm_ConfigType* configPtr)</pre>
Service ID [hex]	0x01
Sync/Async	Synchronous
Reentrancy	Non Reentrant

Parameters (in)	configPtr	Pointer to selected configuration structure
Parameters (inout)	None	
Parameters (out)	None	
Return value	None	
Description	This function initializes the J1939 Network Management module.	
Available via	J1939Nm.h	

](SRS_J1939_00030)

See section 7.2.1 for details.

See section 8.1 for parameter checks.

J1939NM_E_INIT_FAILED shall be reported as specified in [4] by SWS_BSW_00050.

8.4.2 J1939Nm_DeInit

[SWS_J1939Nm_00032]

Service Name	J1939Nm_DeInit
Syntax	void J1939Nm_DeInit (void)
Service ID [hex]	0x02
Sync/Async	Synchronous
Reentrancy	Non Reentrant
Parameters (in)	None
Parameters (inout)	None
Parameters (out)	None
Return value	None
Description	This function resets the J1939 Network Management module to the uninitialized state.
Available via	J1939Nm.h

](SRS_J1939_00031)

See section 7.2.1 for details.

8.4.3 J1939Nm_GetVersionInfo

[SWS_J1939Nm_00033]

Service Name	J1939Nm_GetVersionInfo	
Syntax	<pre>void J1939Nm_GetVersionInfo (Std_VersionInfoType* versionInfo)</pre>	
Service ID [hex]	0x03	
Sync/Async	Synchronous	
Reentrancy	Non Reentrant	
Parameters (in)	None	
Parameters (inout)	None	
Parameters (out)	versionInfo	Pointer to where to store the version information of this module.
Return value	None	
Description	Returns the version information of this module.	
Available via	J1939Nm.h	

](SRS_BSW_00407)

See section 8.3.4 “Get Version Information” of [4] for details.

See section 8.1 for parameter checks.

8.4.4 J1939Nm_NetworkRequest

[SWS_J1939Nm_00044]

Service Name	J1939Nm_NetworkRequest	
Syntax	<pre>Std_ReturnType J1939Nm_NetworkRequest (NetworkHandleType nmChannelHandle)</pre>	
Service ID [hex]	0x05	
Sync/Async	Synchronous	
Reentrancy	Reentrant (but not for the same NM-Channel)	
Parameters (in)	nmChannelHandle	Identification of the NM-channel
Parameters (inout)	None	
Parameters (out)	None	
Return value	Std_ReturnType	E_OK: No error E_NOT_OK: Requesting of network has failed

Description	Request the network, since ECU needs to communicate on the bus.
Available via	J1939Nm.h

](SRS_J1939_00036)

See section 7.3.1 for details.

See section 7.2.1 for error handling and section 8.1 for parameter checks.

8.4.5 J1939Nm_NetworkRelease

[SWS_J1939Nm_00045]

Service Name	J1939Nm_NetworkRelease	
Syntax	Std_ReturnType J1939Nm_NetworkRelease (NetworkHandleType nmChannelHandle)	
Service ID [hex]	0x06	
Sync/Async	Asynchronous	
Reentrancy	Reentrant (but not for the same NM-Channel)	
Parameters (in)	nmChannelHandle	Identification of the NM-channel
Parameters (inout)	None	
Parameters (out)	None	
Return value	Std_ReturnType	E_OK: No error E_NOT_OK: Releasing of network has failed
Description	Release the network, since ECU doesn't have to communicate on the bus.	
Available via	J1939Nm.h	

](SRS_J1939_00036)

See section 7.3.3 for details.

See section 7.2.1 for error handling and section 8.1 for parameter checks.

8.4.6 J1939Nm_GetState

[SWS_J1939Nm_00052]

Service Name	J1939Nm_GetState	
Syntax	Std_ReturnType J1939Nm_GetState (NetworkHandleType NetworkHandle, Nm_StateType* nmStatePtr, Nm_ModeType* nmModePtr	

)	
Service ID [hex]	0x0d	
Sync/Async	Synchronous	
Reentrancy	Reentrant	
Parameters (in)	Network Handle	Identification of the NM-channel
Parameters (inout)	None	
Parameters (out)	nmStatePtr	Pointer where state of the network management shall be copied to.
	nmModePtr	Pointer where the mode of the network management shall be copied to.
Return value	Std_Return-Type	E_OK: No error E_NOT_OK: Getting of NM state has failed
Description	Returns the state and the mode of the network management.	
Available via	J1939Nm.h	

|()

See section 7.2.1 for error handling and section 8.1 for parameter checks.

8.4.7 J1939Nm_GetBusOffDelay

[SWS_J1939Nm_00070]

Service Name	J1939Nm_GetBusOffDelay	
Syntax	<pre>void J1939Nm_GetBusOffDelay (NetworkHandleType network, uint8* delayCyclesPtr)</pre>	
Service ID [hex]	0x10	
Sync/Async	Synchronous	
Reentrancy	Reentrant for different networks	
Parameters (in)	network	CAN network where a BusOff occurred.
Parameters (inout)	None	
Parameters (out)	delayCyclesPtr	Number of CanSM base cycles to wait additionally to L1/L2 after a BusOff occurred.
Return value	None	

Description	This callout function returns the number of CanSM base cycles to wait additionally to L1/L2 after a BusOff occurred.
Available via	J1939Nm.h

]()

See section 7.2.1 for error handling and section 8.1 for parameter checks.

8.4.8 J1939Nm_PassiveStartUp

[SWS_J1939Nm_00054]

Service Name	J1939Nm_PassiveStartUp	
Syntax	Std_ReturnType J1939Nm_PassiveStartUp (NetworkHandleType nmChannelHandle)	
Service ID [hex]	0x0f	
Sync/Async	Synchronous	
Reentrancy	Reentrant (but not for the same NM-Channel)	
Parameters (in)	nmChannelHandle	Identification of the NM-channel
Parameters (inout)	None	
Parameters (out)	None	
Return value	Std_ReturnType	E_OK: No error E_NOT_OK: Passive startup of network management has failed
Description	Passive startup of the NM. It triggers the transition from Bus-Sleep Mode to the Network Mode without requesting the network.	
Available via	J1939Nm.h	

]()

This API is just a dummy to satisfy NM interface linkage. It shall always return E_NOT_OK.

See section 7.2.1 for error handling and section 8.1 for parameter checks.

8.5 Call-back notifications

This is a list of functions provided for other modules.

8.5.1 J1939Nm_RxIndication

[SWS_J1939Nm_00036]

Service Name	J1939Nm_RxIndication	
Syntax	<pre>void J1939Nm_RxIndication (PduIdType RxPduId, const PduInfoType* PduInfoPtr)</pre>	
Service ID [hex]	0x42	
Sync/Async	Synchronous	
Reentrancy	Reentrant for different PduIds. Non reentrant for the same PduId.	
Parameters (in)	RxPduId	ID of the received PDU.
	PduInfoPtr	Contains the length (SduLength) of the received PDU, a pointer to a buffer (SduDataPtr) containing the PDU, and the MetaData related to this PDU.
Parameters (inout)	None	
Parameters (out)	None	
Return value	None	
Description	Indication of a received PDU from a lower layer communication interface module.	
Available via	J1939Nm.h	

()

See section 7.5 for details.

See section 7.2.1 for error handling and section 8.1 for parameter checks.

8.5.2 J1939Nm_TxConfirmation

[SWS_J1939Nm_00037]

Service Name	J1939Nm_TxConfirmation	
Syntax	<pre>void J1939Nm_TxConfirmation (PduIdType TxPduId, Std_ReturnType result)</pre>	
Service ID [hex]	0x40	
Sync/Async	Synchronous	

Reentrancy	Reentrant for different PduIds. Non reentrant for the same PduId.	
Parameters (in)	TxPduId	ID of the PDU that has been transmitted.
	result	E_OK: The PDU was transmitted. E_NOT_OK: Transmission of the PDU failed.
Parameters (inout)	None	
Parameters (out)	None	
Return value	None	
Description	The lower layer communication interface module confirms the transmission of a PDU, or the failure to transmit a PDU.	
Available via	J1939Nm.h	

]()

See section 7.4 for details.

See section 7.2.1 for error handling and section 8.1 for parameter checks.

8.5.3 J1939Nm_RequestIndication

[SWS_J1939Nm_00043]

Service Name	J1939Nm_RequestIndication	
Syntax	<pre>void J1939Nm_RequestIndication (uint8 node, NetworkHandleType channel, uint32 requestedPgn, const J1939Rm_ExtIdInfoType* extIdInfo, uint8 sourceAddress, uint8 destAddress, uint8 priority)</pre>	
Service ID [hex]	0x47	
Sync/Async	Synchronous	
Reentrancy	Reentrant	
Parameters (in)	node	Node by which the request was received.
	channel	Channel on which the request was received.
	requestedPgn	PGN of the requested PG.
	extIdInfo	Extended identifier bytes.
	sourceAddress	Address of the node that sent the Request PG.

	destAddress	Address of this node or 0xFF for broadcast.
	priority	Priority of the Request PG.
Parameters (inout)	None	
Parameters (out)	None	
Return value	None	
Description	Indicates reception of a Request or Request2 PG.	
Available via	J1939Nm.h	

](SRS_J1939_00035)

See section 7.6 for details.

[SWS_J1939Nm_00067] [The J1939 Network Management module shall ignore the request indication when the 'sourceAddress' or the 'priority' are not in the valid range, or when 'node' is not one of the configured node IDs (see J1939NmNodeId), or when 'requestedPgn' is not the PGN of AC, or when 'destAddress' is not 0xFF or the address of the reported node. If DET reporting is enabled via J1939NmDevErrorDetect, the J1939 Network Management module shall report the corresponding development error: J1939NM_E_INVALID_NODE for 'node', J1939NM_E_INVALID_PGN for 'requestedPgn', J1939NM_E_INVALID_ADDRESS for 'sourceAddress' or 'destAddress', and J1939NM_E_INVALID_PRIO for 'priority'.]
()

See section 7.2.1 for further error handling and section 8.1 for further parameter checks.

8.6 Scheduled functions

This function is directly called by the Basic Software Scheduler (SchM).

8.6.1 J1939Nm_MainFunction

[SWS_J1939Nm_00038]

Service Name	J1939Nm_MainFunction
Syntax	void J1939Nm_MainFunction (void)
Service ID [hex]	0x04
Description	Main function of the J1939 Network Management module. Used for scheduling purposes and timeout supervision.
Available via	SchM_J1939Nm.h

]()

[SWS_J1939Nm_00039] [The frequency of invocations of J1939Nm_MainFunction is determined by the configuration parameter J1939NmMainFunctionPeriod.] ()

8.7 Expected Interfaces

In this section, all interfaces required from other modules are listed.

8.7.1 Mandatory Interfaces

This section defines all interfaces that are required to fulfill the core functionality of the module.

[SWS_J1939Nm_00040]

<i>API Function</i>	<i>Header File</i>	<i>Description</i>
BswM_J1939-Nm_State-Change-Notification	BswM_J1939Nm.h	Notification of current J1939Nm state after state changes.
CanIf_Transmit	CanIf.h	Requests transmission of a PDU.
Dem_SetEvent-Status	Dem.h	Called by SW-Cs or BSW modules to report monitor status information to the Dem. BSW modules calling Dem_SetEvent Status can safely ignore the return value. This API will be available only if ({Dem/DemConfigSet/DemEventParameter/DemEvent ReportingType} == STANDARD_REPORTING)
Nm_BusSleep-Mode	Nm.h	Notification that the network management has entered Bus-Sleep Mode.
Nm_Network-Mode	Nm.h	Notification that the network management has entered Network Mode.
Nm_State-Change-Notification	Nm.h	Notification that the state of the lower layer <BusNm> has changed.

]()

8.7.2 Optional Interfaces

This section defines all interfaces that are required to fulfill an optional functionality of the module.

[SWS_J1939Nm_00041]

<i>API Function</i>	<i>Header File</i>	<i>Description</i>
---------------------	--------------------	--------------------

Det_ReportError	Det.h	Service to report development errors.
-----------------	-------	---------------------------------------

]()

8.7.3 Configurable interfaces

In this section, all interfaces are listed where the target function could be configured. The target function is usually a call-back function. The name of this kind of interfaces is not fixed because they are configurable.

8.7.3.1 <User_AddressClaimedIndication>

[SWS_J1939Nm_00028]

Service Name	< User_AddressClaimedIndication >	
Syntax	<pre>void < User_AddressClaimedIndication > (NetworkHandleType channel, uint8 sourceAddress, const uint8* name)</pre>	
Service ID [hex]	0x20	
Sync/Async	Synchronous	
Reentrancy	Reentrant	
Parameters (in)	channel	Channel on which the AC was received.
	source Address	Address of the node that sent the AC or NULL address (0x FE).
	name	Pointer to the byte array containing the 64bit NAME.
Parameters (inout)	None	
Parameters (out)	None	
Return value	None	
Description	Provides the content of received AddressClaimed (AC) PGs.	
Available via	J1939Nm_Externals.h	

]()

[SWS_J1939Nm_00059] [The <User_AddressClaimedIndication> function shall only be available if J1939NmUserCallout is configured.] ()

See section 7.5 for details.

9 Sequence diagrams

The following sequence diagrams shall give an impression of the way the J1939 Network Management module shall behave and interoperate with other BSW modules. They are not complete and not binding for the implementation.

9.1 Transmission of AddressClaimed

The following diagram shows the interaction with CanIf when an AddressClaimed is transmitted.

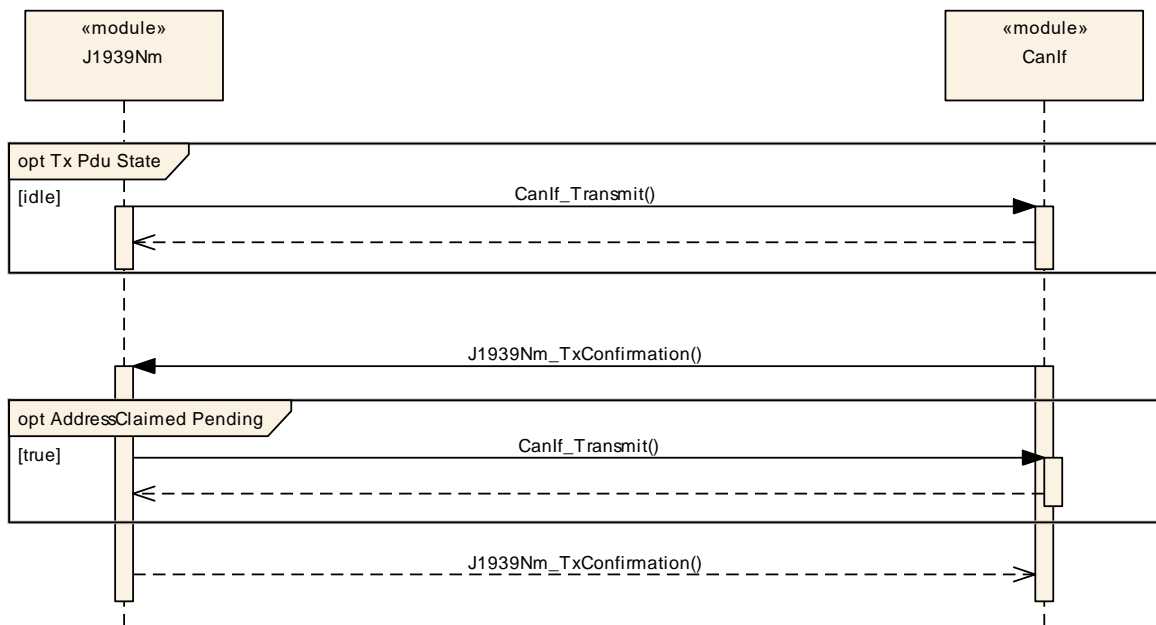


Figure 2: Transmission of AddressClaimed PG

9.2 Reception of AddressClaimed

The following diagram shows the interaction with CanIf when an AddressClaimed is received.

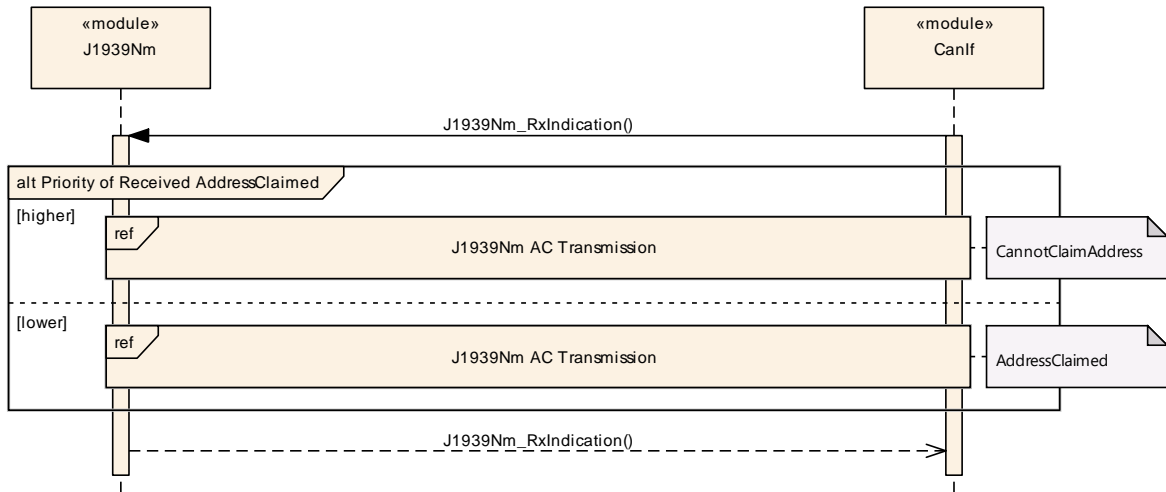


Figure 3: Reception of AddressClaimed PG

9.3 Request for AddressClaimed

The following diagram shows the interaction with J1939Rm and CanIf when a request for AddressClaimed is handled.

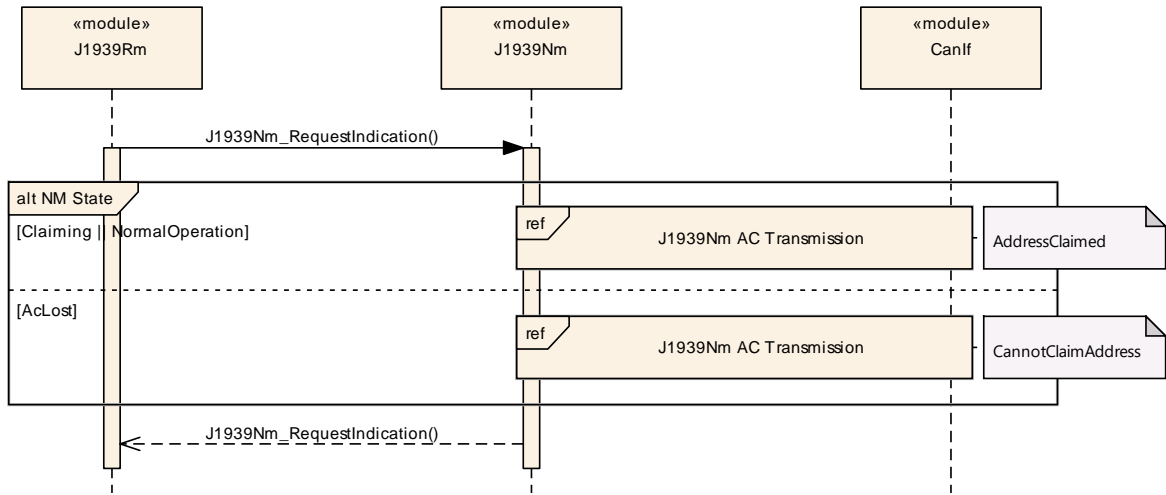


Figure 4: Request for the AddressClaimed PG

10 Configuration specification

In general, this chapter defines configuration parameters and their clustering into containers. For general information about the definition of containers and parameters, refer to the chapter 10.1 “Introduction to configuration specification” in the SWS BSW General [4].

Section 10.1 specifies the structure (containers) and the parameters of the J1939 Network Management module.

Section 10.2 gives hints on how to configure the NM interface to support J1939Nm.

Section 10.3 specifies published information of the J1939 Network Management module.

10.1 Containers and configuration parameters

The following sections summarize all configuration parameters of the J1939 Network Management module. The detailed meaning of the parameters is described in chapters 7 and 8.

The following pictures show an overview of the configuration parameters available for J1939Nm:

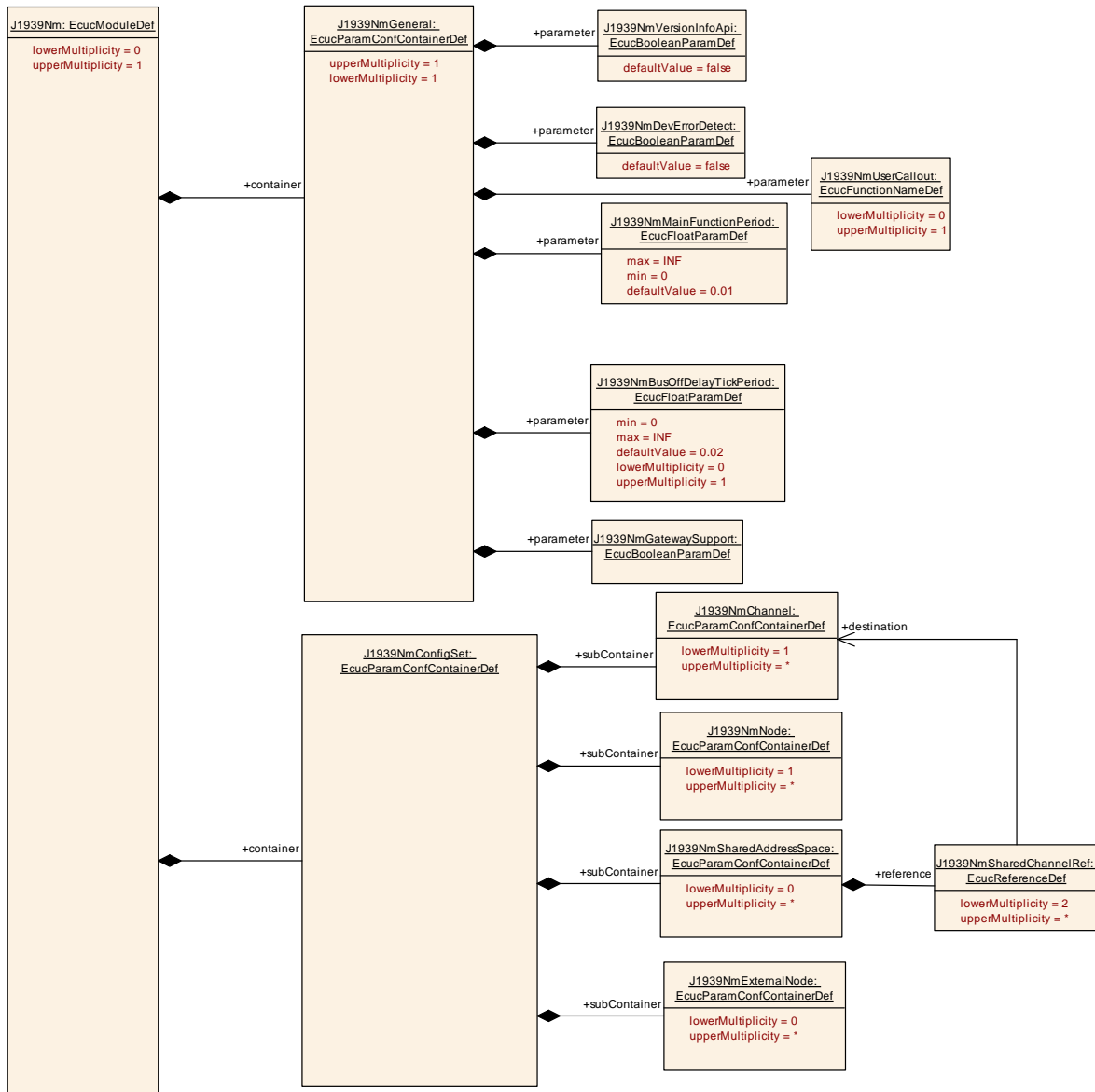


Figure 5: Configuration container J1939Nm

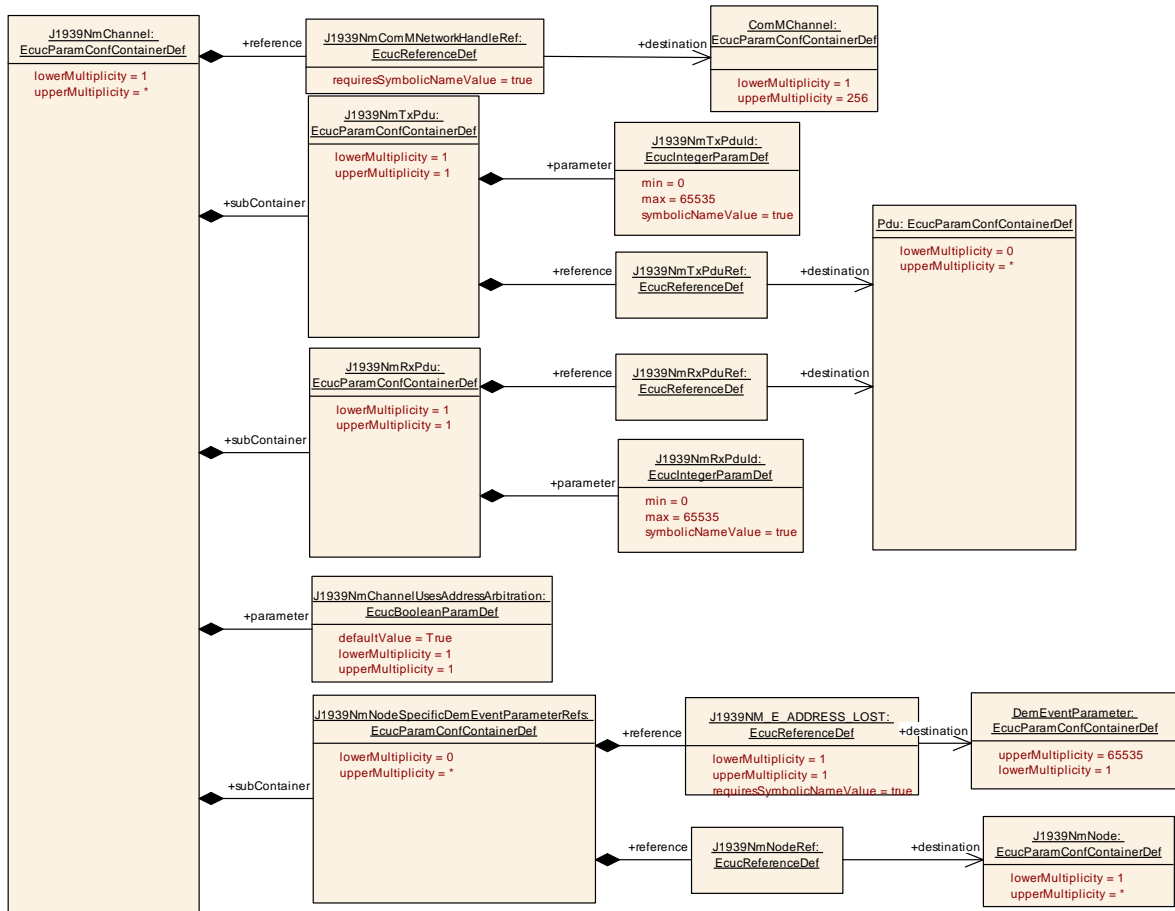


Figure 6: Configuration container J1939NmChannel

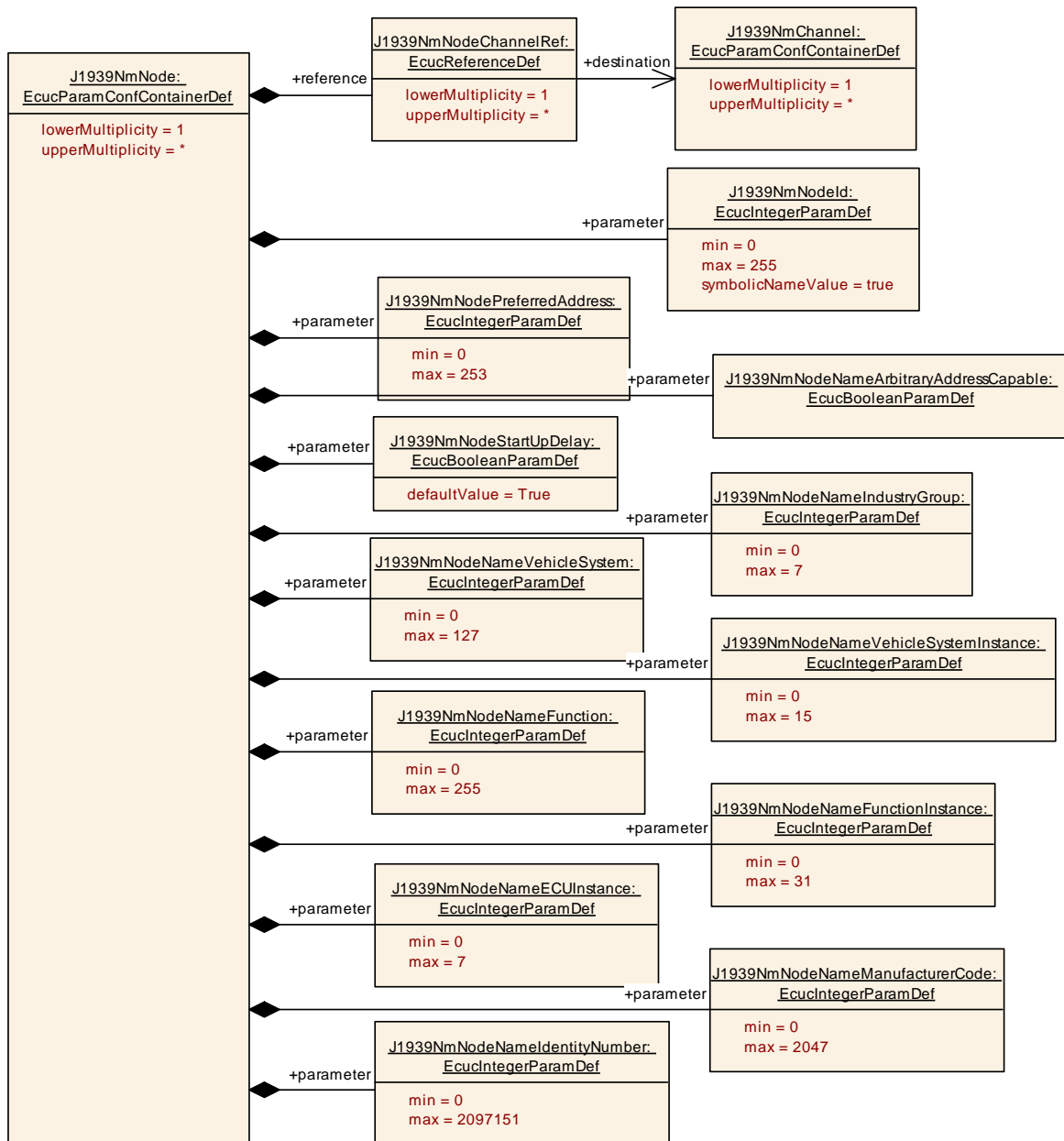


Figure 7: Configuration container J1939NmNode

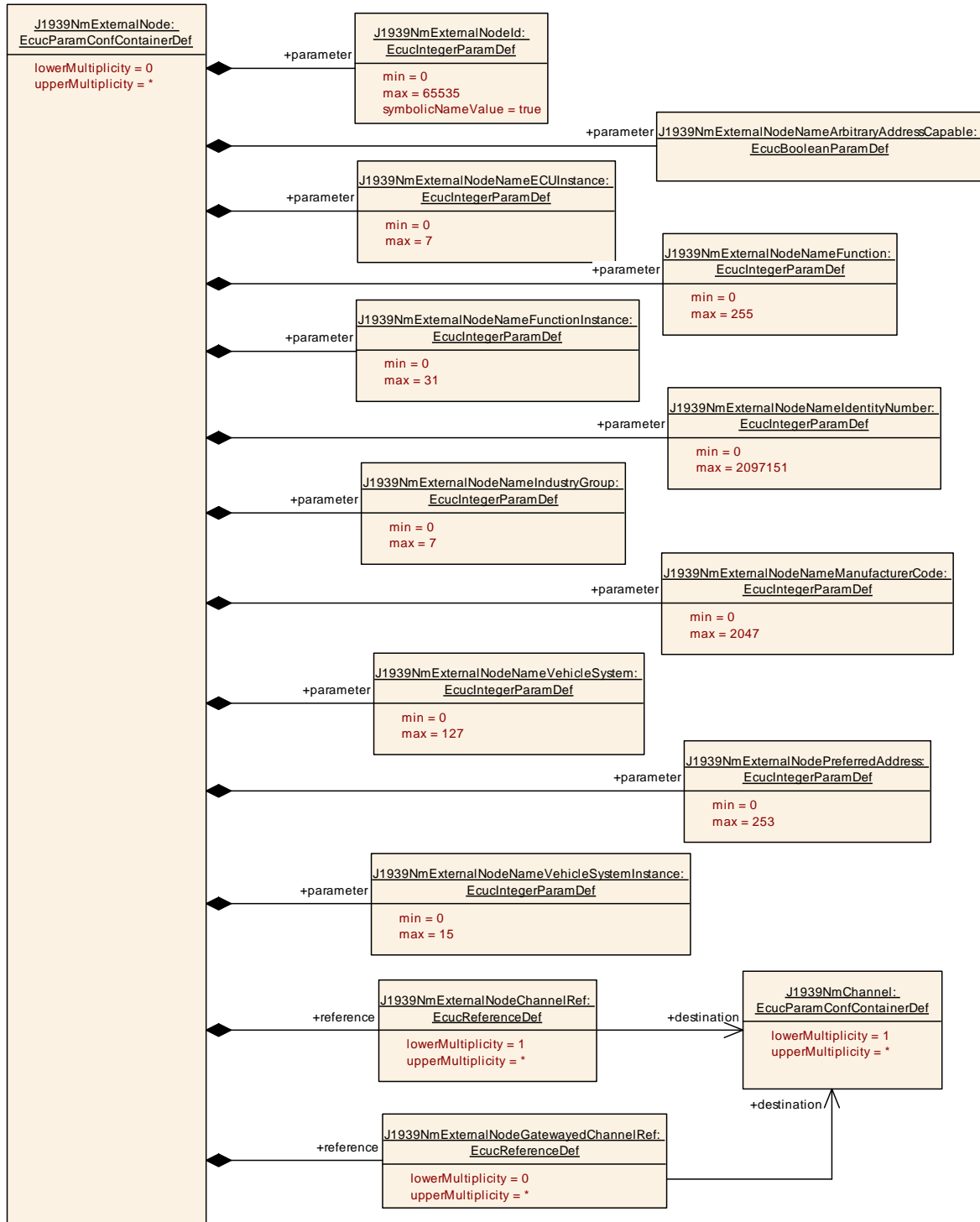


Figure 8: Configuration container J1939NmExternalNode

10.1.1 J1939Nm

SWS Item	ECUC_J1939Nm_00028 :
Module Name	J1939Nm
Module Description	Configuration of the J1939 Network Management module.

Post-Build Variant Support	true
Supported Config Variants	VARIANT-LINK-TIME, VARIANT-POST-BUILD, VARIANT-PRE-COMPILE

Included Containers		
Container Name	Multiplicity	Scope / Dependency
J1939NmConfigSet	1	This container contains the configuration parameters and sub containers of the AUTOSAR J1939Nm module.
J1939NmGeneral	1	Contains the general configuration parameters of the module.

10.1.2 J1939NmGeneral

SWS Item	ECUC_J1939Nm_00001 :
Container Name	J1939NmGeneral
Parent Container	J1939Nm
Description	Contains the general configuration parameters of the module.
Configuration Parameters	

SWS Item	ECUC_J1939Nm_00034 :		
Name	J1939NmBusOffDelayTickPeriod		
Parent Container	J1939NmGeneral		
Description	Duration of ticks that are used to time BusOff delays after conflicting address claims. This parameter must be synchronized with the main function period of the CAN State Manager.		
Multiplicity	0..1		
Type	EcucFloatParamDef		
Range]0 .. INF[
Default value	0.02		
Post-Build Variant Multiplicity	false		
Post-Build Variant Value	false		
Multiplicity Configuration Class	Pre-compile time	X	VARIANT-PRE-COMPILE
	Link time	X	VARIANT-LINK-TIME, VARIANT-POST-BUILD
	Post-build time	--	
Value Configuration Class	Pre-compile time	X	VARIANT-PRE-COMPILE
	Link time	X	VARIANT-LINK-TIME, VARIANT-POST-BUILD
	Post-build time	--	
Scope / Dependency	scope: local		

SWS Item	ECUC_J1939Nm_00003 :		
Name	J1939NmDevErrorDetect		
Parent Container	J1939NmGeneral		
Description	Switches the development error detection and notification on or off. <ul style="list-style-type: none"> • true: detection and notification is enabled. • false: detection and notification is disabled. 		
Multiplicity	1		
Type	EcucBooleanParamDef		
Default value	false		
Post-Build Variant Value	false		

Value Configuration Class	Pre-compile time	X	All Variants
	Link time	--	
	Post-build time	--	
Scope / Dependency	scope: local		

SWS Item	ECUC_J1939Nm_00036 :		
Name	J1939NmGatewaySupport		
Parent Container	J1939NmGeneral		
Description	Enables/disables support for claiming the addresses of routed messages.		
Multiplicity	1		
Type	EcucBooleanParamDef		
Default value	--		
Post-Build Variant Value	false		
Value Configuration Class	Pre-compile time	X	All Variants
	Link time	--	
	Post-build time	--	
Scope / Dependency	scope: local		

SWS Item	ECUC_J1939Nm_00004 :		
Name	J1939NmMainFunctionPeriod		
Parent Container	J1939NmGeneral		
Description	Call cycle in seconds of J1939Nm_MainFunction.		
Multiplicity	1		
Type	EcucFloatParamDef		
Range]0 .. INF[
Default value	0.01		
Post-Build Variant Value	false		
Value Configuration Class	Pre-compile time	X	VARIANT-PRE-COMPILE
	Link time	X	VARIANT-LINK-TIME, VARIANT-POST-BUILD
	Post-build time	--	
Scope / Dependency	scope: ECU		

SWS Item	ECUC_J1939Nm_00032 :		
Name	J1939NmUserCallout		
Parent Container	J1939NmGeneral		
Description	Pre-processor switch for enabling the <User_AddressClaimedIndication> and defining the name of the callout function.		
Multiplicity	0..1		
Type	EcucFunctionNameDef		
Default value	--		
maxLength	--		
minLength	--		
regularExpression	--		
Post-Build Variant Multiplicity	false		
Post-Build Variant Value	false		
Multiplicity Configuration Class	Pre-compile time	X	All Variants
	Link time	--	
	Post-build time	--	
Value Configuration Class	Pre-compile time	X	All Variants
	Link time	--	
	Post-build time	--	
Scope / Dependency	scope: local		

SWS Item	ECUC_J1939Nm_00002 :		
-----------------	-----------------------------	--	--

Name	J1939NmVersionInfoApi		
Parent Container	J1939NmGeneral		
Description	Pre-processor switch for enabling version info API support.		
Multiplicity	1		
Type	EcucBooleanParamDef		
Default value	false		
Post-Build Variant Value	false		
Value Configuration Class	Pre-compile time	X	All Variants
	Link time	--	
	Post-build time	--	
Scope / Dependency	scope: local		

No Included Containers

10.1.3 J1939NmConfigSet

SWS Item	ECUC_J1939Nm_00027 :
Container Name	J1939NmConfigSet
Parent Container	J1939Nm
Description	This container contains the configuration parameters and sub containers of the AUTOSAR J1939Nm module.
Configuration Parameters	

Included Containers		
Container Name	Multiplicity	Scope / Dependency
J1939NmChannel	1..*	Physical CAN channel handled by J1939Nm.
J1939NmExternalNode	0..*	Logical node implemented in another ECU. Configures potential communication partners. If this container is connected to more than one channel, the external ECU is linked to the local ECU by each of these channels.
J1939NmNode	1..*	Logical node representing one function handled by J1939Nm.
J1939NmSharedAddressSpace	0..*	Set of J1939NmChannels that share a common address space. Address claims will be routed between these channels.

10.1.4 J1939NmSharedAddressSpace

SWS Item	ECUC_J1939Nm_00037 :		
Container Name	J1939NmSharedAddressSpace		
Parent Container	J1939NmConfigSet		
Description	Set of J1939NmChannels that share a common address space. Address claims will be routed between these channels.		
Post-Build Variant Multiplicity	true		
Multiplicity Configuration Class	Pre-compile time	X	VARIANT-PRE-COMPILE
	Link time	X	VARIANT-LINK-TIME
	Post-build time	X	VARIANT-POST-BUILD
Configuration Parameters			

SWS Item	ECUC_J1939Nm_00038 :		
Name	J1939NmSharedChannelRef		
Parent Container	J1939NmSharedAddressSpace		
Description	Reference to a channel that belongs to the shared address space.		
Multiplicity	2..*		
Type	Reference to [J1939NmChannel]		
Post-Build Variant Multiplicity	true		
Post-Build Variant Value	true		
Multiplicity Configuration Class	Pre-compile time	X	VARIANT-PRE-COMPILE
	Link time	X	VARIANT-LINK-TIME
	Post-build time	X	VARIANT-POST-BUILD
Value Configuration Class	Pre-compile time	X	VARIANT-PRE-COMPILE
	Link time	X	VARIANT-LINK-TIME
	Post-build time	X	VARIANT-POST-BUILD
Scope / Dependency	scope: local		

No Included Containers

10.1.5 J1939NmChannel

SWS Item	ECUC_J1939Nm_00005 :		
Container Name	J1939NmChannel		
Parent Container	J1939NmConfigSet		
Description	Physical CAN channel handled by J1939Nm.		
Post-Build Variant Multiplicity	true		
Multiplicity Configuration Class	Pre-compile time	X	VARIANT-PRE-COMPILE
	Link time	X	VARIANT-LINK-TIME
	Post-build time	X	VARIANT-POST-BUILD
Configuration Parameters			

SWS Item	ECUC_J1939Nm_00035 :		
Name	J1939NmChannelUsesAddressArbitration		
Parent Container	J1939NmChannel		
Description	<p>Defines whether the nodes attached to this channel use an initial address claim, and whether they react to contending address claims of other nodes.</p> <p>True: The initial address claim is sent, and the node reacts to address claims of other nodes.</p> <p>False: The node only sends an address claim upon request, and does not react to other address claims.</p>		
Multiplicity	1		
Type	EcucBooleanParamDef		
Default value	true		
Post-Build Variant Value	true		
Value Configuration Class	Pre-compile time	X	VARIANT-PRE-COMPILE
	Link time	X	VARIANT-LINK-TIME
	Post-build time	X	VARIANT-POST-BUILD
Scope / Dependency	scope: local		

SWS Item	ECUC_J1939Nm_00008 :		
Name	J1939NmComMNetworkHandleRef		

Parent Container	J1939NmChannel		
Description	Reference to the channel defined by the ComMChannel providing access to the unique channel index ComMChannelId.		
Multiplicity	1		
Type	Symbolic name reference to [ComMChannel]		
Post-Build Variant Value	false		
Value Configuration Class	Pre-compile time	X	VARIANT-PRE-COMPILE
	Link time	X	VARIANT-LINK-TIME, VARIANT-POST-BUILD
	Post-build time	--	
Scope / Dependency	scope: local		

Included Containers		
Container Name	Multiplicity	Scope / Dependency
J1939NmNodeSpecificDemEventParameterRefs	0..*	Container for the references to DemEventParameter elements related to one J1939NmNode which shall be invoked using the API Dem_SetEventStatus in case the corresponding error occurs. The EventId is taken from the referenced DemEventParameter's DemEventId symbolic value. The standardized errors are provided in this container and can be extended by vendor-specific error references.
J1939NmRxPdu	1	Contains the configuration of the PDU used to receive the AddressClaimed PG. This PDU consumes a meta data item of type CAN_ID_32.
J1939NmTxPdu	1	Contains the configuration of the PDU used to transmit the AddressClaimed PG. This PDU produces a meta data item of type CAN_ID_32.

10.1.6 J1939NmTxPdu

SWS Item	ECUC_J1939Nm_00009 :
Container Name	J1939NmTxPdu
Parent Container	J1939NmChannel
Description	Contains the configuration of the PDU used to transmit the AddressClaimed PG. This PDU produces a meta data item of type CAN_ID_32.
Configuration Parameters	

SWS Item	ECUC_J1939Nm_00011 :
Name	J1939NmTxPduld
Parent Container	J1939NmTxPdu
Description	The PDU identifier used for TxConfirmation from CanIf.
Multiplicity	1
Type	EcucIntegerParamDef (Symbolic Name generated for this parameter)
Range	0 .. 65535
Default value	--
Post-Build Variant Value	false
Value Configuration Class	Pre-compile time X All Variants

	Link time	--	
	Post-build time	--	
Scope / Dependency	scope: ECU		

SWS Item	ECUC_J1939Nm_00012 :		
Name	J1939NmTxPduRef		
Parent Container	J1939NmTxPdu		
Description	Reference to the Pdu object representing the PDU.		
Multiplicity	1		
Type	Reference to [Pdu]		
Post-Build Variant Value	false		
Value Configuration Class	Pre-compile time	X	VARIANT-PRE-COMPILE
	Link time	X	VARIANT-LINK-TIME, VARIANT-POST-BUILD
	Post-build time	--	
Scope / Dependency	scope: local		

No Included Containers

10.1.7 J1939NmRxPdu

SWS Item	ECUC_J1939Nm_00010 :		
Container Name	J1939NmRxPdu		
Parent Container	J1939NmChannel		
Description	Contains the configuration of the PDU used to receive the AddressClaimed PG. This PDU consumes a meta data item of type CAN_ID_32.		
Configuration Parameters			

SWS Item	ECUC_J1939Nm_00014 :		
Name	J1939NmRxPduId		
Parent Container	J1939NmRxPdu		
Description	The PDU identifier used for RxIndication from CanIf.		
Multiplicity	1		
Type	EcucIntegerParamDef (Symbolic Name generated for this parameter)		
Range	0 .. 65535		
Default value	--		
Post-Build Variant Value	false		
Value Configuration Class	Pre-compile time	X	All Variants
	Link time	--	
	Post-build time	--	
Scope / Dependency	scope: ECU		

SWS Item	ECUC_J1939Nm_00013 :		
Name	J1939NmRxPduRef		
Parent Container	J1939NmRxPdu		
Description	Reference to the Pdu object representing the PDU.		
Multiplicity	1		
Type	Reference to [Pdu]		
Post-Build Variant Value	false		
Value Configuration Class	Pre-compile time	X	VARIANT-PRE-COMPILE
	Link time	X	VARIANT-LINK-TIME, VARIANT-POST-BUILD

	Post-build time	--	
Scope / Dependency	scope: local		

No Included Containers

10.1.8 J1939NmNodeSpecificDemEventParameterRefs

SWS Item	ECUC_J1939Nm_00006 :		
Container Name	J1939NmNodeSpecificDemEventParameterRefs		
Parent Container	J1939NmChannel		
Description	Container for the references to DemEventParameter elements related to one J1939NmNode which shall be invoked using the API Dem_SetEventStatus in case the corresponding error occurs. The EventId is taken from the referenced DemEventParameter's DemEventId symbolic value. The standardized errors are provided in this container and can be extended by vendor-specific error references.		
Post-Build Variant Multiplicity	true		
Multiplicity Configuration Class	Pre-compile time	X	VARIANT-PRE-COMPILE
	Link time	X	VARIANT-LINK-TIME
	Post-build time	X	VARIANT-POST-BUILD
Configuration Parameters			

SWS Item	ECUC_J1939Nm_00007 :		
Name	J1939NM_E_ADDRESS_LOST		
Parent Container	J1939NmNodeSpecificDemEventParameterRefs		
Description	Reference to the DemEventParameter which shall be issued when the ECU failed to claim one of its addresses.		
Multiplicity	1		
Type	Symbolic name reference to [DemEventParameter]		
Post-Build Variant Value	false		
Value Configuration Class	Pre-compile time	X	All Variants
	Link time	--	
	Post-build time	--	
Scope / Dependency	scope: local		

SWS Item	ECUC_J1939Nm_00053 :		
Name	J1939NmNodeRef		
Parent Container	J1939NmNodeSpecificDemEventParameterRefs		
Description	Reference to J1939NmNode.		
Multiplicity	1		
Type	Reference to [J1939NmNode]		
Post-Build Variant Value	true		
Value Configuration Class	Pre-compile time	X	VARIANT-PRE-COMPILE
	Link time	X	VARIANT-LINK-TIME
	Post-build time	X	VARIANT-POST-BUILD
Scope / Dependency	scope: local		

No Included Containers

10.1.9 J1939NmNode

SWS Item	ECUC_J1939Nm_00015 :		
Container Name	J1939NmNode		
Parent Container	J1939NmConfigSet		
Description	Logical node representing one function handled by J1939Nm.		
Post-Build Variant Multiplicity	true		
Multiplicity Configuration Class	Pre-compile time	X	VARIANT-PRE-COMPILE
	Link time	X	VARIANT-LINK-TIME
	Post-build time	X	VARIANT-POST-BUILD
Configuration Parameters			

SWS Item	ECUC_J1939Nm_00030 :		
Name	J1939NmNodeId		
Parent Container	J1939NmNode		
Description	Unique identifier of this node.		
Multiplicity	1		
Type	EcucIntegerParamDef (Symbolic Name generated for this parameter)		
Range	0 .. 255		
Default value	--		
Post-Build Variant Value	false		
Value Configuration Class	Pre-compile time	X	All Variants
	Link time	--	
	Post-build time	--	
Scope / Dependency	scope: ECU		

SWS Item	ECUC_J1939Nm_00018 :		
Name	J1939NmNodeNameArbitraryAddressCapable		
Parent Container	J1939NmNode		
Description	Arbitrary Address Capable field of the NAME of this node.		
Multiplicity	1		
Type	EcucBooleanParamDef		
Default value	--		
Post-Build Variant Value	false		
Value Configuration Class	Pre-compile time	X	All Variants
	Link time	--	
	Post-build time	--	
Scope / Dependency	scope: local		

SWS Item	ECUC_J1939Nm_00024 :		
Name	J1939NmNodeNameECUInstance		
Parent Container	J1939NmNode		
Description	ECU Instance field of the NAME of this node.		
Multiplicity	1		
Type	EcucIntegerParamDef		
Range	0 .. 7		
Default value	--		
Post-Build Variant Value	true		
Value Configuration Class	Pre-compile time	X	VARIANT-PRE-COMPILE
	Link time	X	VARIANT-LINK-TIME
	Post-build time	X	VARIANT-POST-BUILD
Scope / Dependency	scope: local		

SWS Item	ECUC_J1939Nm_00022 :		
-----------------	-----------------------------	--	--

Name	J1939NmNodeNameFunction		
Parent Container	J1939NmNode		
Description	Function field of the NAME of this node.		
Multiplicity	1		
Type	EcucIntegerParamDef		
Range	0 .. 255		
Default value	--		
Post-Build Variant Value	true		
Value Configuration Class	Pre-compile time	X	VARIANT-PRE-COMPILE
	Link time	X	VARIANT-LINK-TIME
	Post-build time	X	VARIANT-POST-BUILD
Scope / Dependency	scope: local		

SWS Item	ECUC_J1939Nm_00023 :		
Name	J1939NmNodeNameFunctionInstance		
Parent Container	J1939NmNode		
Description	Function Instance field of the NAME of this node.		
Multiplicity	1		
Type	EcucIntegerParamDef		
Range	0 .. 31		
Default value	--		
Post-Build Variant Value	true		
Value Configuration Class	Pre-compile time	X	VARIANT-PRE-COMPILE
	Link time	X	VARIANT-LINK-TIME
	Post-build time	X	VARIANT-POST-BUILD
Scope / Dependency	scope: local		

SWS Item	ECUC_J1939Nm_00026 :		
Name	J1939NmNodeNameIdentityNumber		
Parent Container	J1939NmNode		
Description	Identity Number field of the NAME of this node.		
Multiplicity	1		
Type	EcucIntegerParamDef		
Range	0 .. 2097151		
Default value	--		
Post-Build Variant Value	true		
Value Configuration Class	Pre-compile time	X	VARIANT-PRE-COMPILE
	Link time	X	VARIANT-LINK-TIME
	Post-build time	X	VARIANT-POST-BUILD
Scope / Dependency	scope: local		

SWS Item	ECUC_J1939Nm_00019 :		
Name	J1939NmNodeNameIndustryGroup		
Parent Container	J1939NmNode		
Description	Industry Group field of the NAME of this node.		
Multiplicity	1		
Type	EcucIntegerParamDef		
Range	0 .. 7		
Default value	--		
Post-Build Variant Value	true		
Value Configuration Class	Pre-compile time	X	VARIANT-PRE-COMPILE
	Link time	X	VARIANT-LINK-TIME
	Post-build time	X	VARIANT-POST-BUILD
Scope / Dependency	scope: local		

SWS Item	ECUC_J1939Nm_00025 :		
Name	J1939NmNodeNameManufacturerCode		
Parent Container	J1939NmNode		
Description	Manufacturer Code field of the NAME of this node.		
Multiplicity	1		
Type	EcucIntegerParamDef		
Range	0 .. 2047		
Default value	--		
Post-Build Variant Value	true		
Value Configuration Class	Pre-compile time	X	VARIANT-PRE-COMPILE
	Link time	X	VARIANT-LINK-TIME
	Post-build time	X	VARIANT-POST-BUILD
Scope / Dependency	scope: local		

SWS Item	ECUC_J1939Nm_00021 :		
Name	J1939NmNodeNameVehicleSystem		
Parent Container	J1939NmNode		
Description	Vehicle System field of the NAME of this node.		
Multiplicity	1		
Type	EcucIntegerParamDef		
Range	0 .. 127		
Default value	--		
Post-Build Variant Value	true		
Value Configuration Class	Pre-compile time	X	VARIANT-PRE-COMPILE
	Link time	X	VARIANT-LINK-TIME
	Post-build time	X	VARIANT-POST-BUILD
Scope / Dependency	scope: local		

SWS Item	ECUC_J1939Nm_00020 :		
Name	J1939NmNodeNameVehicleSystemInstance		
Parent Container	J1939NmNode		
Description	Vehicle System Instance field of the NAME of this node.		
Multiplicity	1		
Type	EcucIntegerParamDef		
Range	0 .. 15		
Default value	--		
Post-Build Variant Value	true		
Value Configuration Class	Pre-compile time	X	VARIANT-PRE-COMPILE
	Link time	X	VARIANT-LINK-TIME
	Post-build time	X	VARIANT-POST-BUILD
Scope / Dependency	scope: local		

SWS Item	ECUC_J1939Nm_00016 :		
Name	J1939NmNodePreferredAddress		
Parent Container	J1939NmNode		
Description	Source address of this node used for address claiming.		
Multiplicity	1		
Type	EcucIntegerParamDef		
Range	0 .. 253		
Default value	--		
Post-Build Variant Value	true		
Value Configuration Class	Pre-compile time	X	VARIANT-PRE-COMPILE
	Link time	X	VARIANT-LINK-TIME
	Post-build time	X	VARIANT-POST-BUILD
Scope / Dependency	scope: ECU		

SWS Item	ECUC_J1939Nm_00017 :		
Name	J1939NmNodeStartUpDelay		
Parent Container	J1939NmNode		
Description	If enabled, the node will start communication after a delay of 250ms after transmission of the initial AddressClaimed, depending on the configured J1939NmNodePreferredAddress. If disabled, the node will start communication immediately at network start-up. Please note: According to J1939/81, the 250ms delay is not required for single address CAs with desired source addresses in the ranges 0..127 or 248..253.		
Multiplicity	1		
Type	EcucBooleanParamDef		
Default value	true		
Post-Build Variant Value	false		
Value Configuration Class	Pre-compile time	X	All Variants
	Link time	--	
	Post-build time	--	
Scope / Dependency	scope: local		

SWS Item	ECUC_J1939Nm_00029 :		
Name	J1939NmNodeChannelRef		
Parent Container	J1939NmNode		
Description	Reference to the channels this node has access to.		
Multiplicity	1..*		
Type	Reference to [J1939NmChannel]		
Post-Build Variant Multiplicity	false		
Post-Build Variant Value	false		
Multiplicity Configuration Class	Pre-compile time	X	VARIANT-PRE-COMPILE
	Link time	X	VARIANT-LINK-TIME, VARIANT-POST-BUILD
	Post-build time	--	
Value Configuration Class	Pre-compile time	X	VARIANT-PRE-COMPILE
	Link time	X	VARIANT-LINK-TIME, VARIANT-POST-BUILD
	Post-build time	--	
Scope / Dependency	scope: local		

No Included Containers

10.1.10 J1939NmExternalNode

SWS Item	ECUC_J1939Nm_00039 :		
Container Name	J1939NmExternalNode		
Parent Container	J1939NmConfigSet		
Description	Logical node implemented in another ECU. Configures potential communication partners. If this container is connected to more than one channel, the external ECU is linked to the local ECU by each of these channels.		
Post-Build Variant Multiplicity	false		
Multiplicity Configuration Class	Pre-compile time	X	All Variants
	Link time	--	

	Post-build time	--	
Configuration Parameters			

SWS Item	ECUC_J1939Nm_00040 :		
Name	J1939NmExternalNodeId		
Parent Container	J1939NmExternalNode		
Description	Unique identifier of this external node.		
Multiplicity	1		
Type	EcucIntegerParamDef (Symbolic Name generated for this parameter)		
Range	0 .. 65535		
Default value	--		
Post-Build Variant Value	false		
Value Configuration Class	Pre-compile time	X	All Variants
	Link time	--	
	Post-build time	--	
Scope / Dependency	scope: ECU		

SWS Item	ECUC_J1939Nm_00041 :		
Name	J1939NmExternalNodeNameArbitraryAddressCapable		
Parent Container	J1939NmExternalNode		
Description	Arbitrary Address Capable field of the NAME of this external node.		
Multiplicity	1		
Type	EcucBooleanParamDef		
Default value	--		
Post-Build Variant Value	true		
Value Configuration Class	Pre-compile time	X	VARIANT-PRE-COMPILE
	Link time	X	VARIANT-LINK-TIME
	Post-build time	X	VARIANT-POST-BUILD
Scope / Dependency	scope: local		

SWS Item	ECUC_J1939Nm_00042 :		
Name	J1939NmExternalNodeNameECUInstance		
Parent Container	J1939NmExternalNode		
Description	ECU Instance field of the NAME of this external node.		
Multiplicity	1		
Type	EcucIntegerParamDef		
Range	0 .. 7		
Default value	--		
Post-Build Variant Value	true		
Value Configuration Class	Pre-compile time	X	VARIANT-PRE-COMPILE
	Link time	X	VARIANT-LINK-TIME
	Post-build time	X	VARIANT-POST-BUILD
Scope / Dependency	scope: local		

SWS Item	ECUC_J1939Nm_00043 :		
Name	J1939NmExternalNodeNameFunction		
Parent Container	J1939NmExternalNode		
Description	Function field of the NAME of this external node.		
Multiplicity	1		
Type	EcucIntegerParamDef		
Range	0 .. 255		
Default value	--		
Post-Build Variant Value	true		
Value Configuration Class	Pre-compile time	X	VARIANT-PRE-COMPILE
	Link time	X	VARIANT-LINK-TIME

	Post-build time	X	VARIANT-POST-BUILD
Scope / Dependency	scope: local		

SWS Item	ECUC_J1939Nm_00044 :		
Name	J1939NmExternalNodeNameFunctionInstance		
Parent Container	J1939NmExternalNode		
Description	Function Instance field of the NAME of this external node.		
Multiplicity	1		
Type	EcucIntegerParamDef		
Range	0 .. 31		
Default value	--		
Post-Build Variant Value	true		
Value Configuration Class	Pre-compile time	X	VARIANT-PRE-COMPILE
	Link time	X	VARIANT-LINK-TIME
	Post-build time	X	VARIANT-POST-BUILD
Scope / Dependency	scope: local		

SWS Item	ECUC_J1939Nm_00045 :		
Name	J1939NmExternalNodeNameIdentityNumber		
Parent Container	J1939NmExternalNode		
Description	Identity Number field of the NAME of this external node.		
Multiplicity	1		
Type	EcucIntegerParamDef		
Range	0 .. 2097151		
Default value	--		
Post-Build Variant Value	true		
Value Configuration Class	Pre-compile time	X	VARIANT-PRE-COMPILE
	Link time	X	VARIANT-LINK-TIME
	Post-build time	X	VARIANT-POST-BUILD
Scope / Dependency	scope: local		

SWS Item	ECUC_J1939Nm_00046 :		
Name	J1939NmExternalNodeNameIndustryGroup		
Parent Container	J1939NmExternalNode		
Description	Industry Group field of the NAME of this external node.		
Multiplicity	1		
Type	EcucIntegerParamDef		
Range	0 .. 7		
Default value	--		
Post-Build Variant Value	true		
Value Configuration Class	Pre-compile time	X	VARIANT-PRE-COMPILE
	Link time	X	VARIANT-LINK-TIME
	Post-build time	X	VARIANT-POST-BUILD
Scope / Dependency	scope: local		

SWS Item	ECUC_J1939Nm_00047 :		
Name	J1939NmExternalNodeNameManufacturerCode		
Parent Container	J1939NmExternalNode		
Description	Manufacturer Code field of the NAME of this external node.		
Multiplicity	1		
Type	EcucIntegerParamDef		
Range	0 .. 2047		
Default value	--		
Post-Build Variant Value	true		
Value Configuration Class	Pre-compile time	X	VARIANT-PRE-COMPILE

	Link time	X	VARIANT-LINK-TIME
	Post-build time	X	VARIANT-POST-BUILD
Scope / Dependency	scope: local		

SWS Item	ECUC_J1939Nm_00048 :		
Name	J1939NmExternalNodeNameVehicleSystem		
Parent Container	J1939NmExternalNode		
Description	Vehicle System field of the NAME of this external node.		
Multiplicity	1		
Type	EcucIntegerParamDef		
Range	0 .. 127		
Default value	--		
Post-Build Variant Value	true		
Value Configuration Class	Pre-compile time	X	VARIANT-PRE-COMPILE
	Link time	X	VARIANT-LINK-TIME
	Post-build time	X	VARIANT-POST-BUILD
Scope / Dependency	scope: local		

SWS Item	ECUC_J1939Nm_00050 :		
Name	J1939NmExternalNodeNameVehicleSystemInstance		
Parent Container	J1939NmExternalNode		
Description	Vehicle System Instance field of the NAME of this external node.		
Multiplicity	1		
Type	EcucIntegerParamDef		
Range	0 .. 15		
Default value	--		
Post-Build Variant Value	true		
Value Configuration Class	Pre-compile time	X	VARIANT-PRE-COMPILE
	Link time	X	VARIANT-LINK-TIME
	Post-build time	X	VARIANT-POST-BUILD
Scope / Dependency	scope: local		

SWS Item	ECUC_J1939Nm_00049 :		
Name	J1939NmExternalNodePreferredAddress		
Parent Container	J1939NmExternalNode		
Description	Source address of this external node.		
Multiplicity	1		
Type	EcucIntegerParamDef		
Range	0 .. 253		
Default value	--		
Post-Build Variant Value	true		
Value Configuration Class	Pre-compile time	X	VARIANT-PRE-COMPILE
	Link time	X	VARIANT-LINK-TIME
	Post-build time	X	VARIANT-POST-BUILD
Scope / Dependency	scope: ECU		

SWS Item	ECUC_J1939Nm_00051 :		
Name	J1939NmExternalNodeChannelRef		
Parent Container	J1939NmExternalNode		
Description	Reference to the channels of the local ECU this external node has access to.		
Multiplicity	1..*		
Type	Reference to [J1939NmChannel]		
Post-Build Variant Multiplicity	true		
Post-Build Variant Value	true		

Multiplicity Configuration Class	Pre-compile time	X	VARIANT-PRE-COMPILE
	Link time	X	VARIANT-LINK-TIME
	Post-build time	X	VARIANT-POST-BUILD
Value Configuration Class	Pre-compile time	X	VARIANT-PRE-COMPILE
	Link time	X	VARIANT-LINK-TIME
	Post-build time	X	VARIANT-POST-BUILD
Scope / Dependency	scope: local		

SWS Item	ECUC_J1939Nm_00052 :		
Name	J1939NmExternalNodeGatewayedChannelRef		
Parent Container	J1939NmExternalNode		
Description	Reference to the channels on which messages to/from this external node shall be gatewayed. The address claim from the external node will be replicated on these channels.		
Multiplicity	0..*		
Type	Reference to [J1939NmChannel]		
Post-Build Variant Multiplicity	true		
Post-Build Variant Value	true		
Multiplicity Configuration Class	Pre-compile time	X	VARIANT-PRE-COMPILE
	Link time	X	VARIANT-LINK-TIME
	Post-build time	X	VARIANT-POST-BUILD
Value Configuration Class	Pre-compile time	X	VARIANT-PRE-COMPILE
	Link time	X	VARIANT-LINK-TIME
	Post-build time	X	VARIANT-POST-BUILD
Scope / Dependency	scope: local		

No Included Containers

10.2 Configuration of NM Interface

The J1939 Network Management module relies on the following channel configuration in the NM Interface to be operational:

- NmActiveCoordinator: False
- NmBusSynchronizationEnabled: False
- NmChannelSleepMaster: True
- NmComControlEnabled: False
- NmCoordClusterIndex: <undefined>
- NmCoordinatorSyncSupport: False
- NmNodeDetectionEnabled: False
- NmNodeIdEnabled: False
- NmPassiveModeEnabled: False
- NmRemoteSleepIndEnabled: False
- NmShutdownDelayTimer: 0.0
- NmStateReportEnabled: False
- NmStateReportSignalRef: <undefined>
- NmSynchronizingNetwork: False
- NmUserDataEnabled: False

10.3 Published Information

For details, refer to the chapter 10.3 “Published Information” in the SWS BSW General [4].