

Document Title	Specification of Default Error Tracer
Document Owner	AUTOSAR
Document Responsibility	AUTOSAR
Document Identification No	17
Document Status	published
Part of AUTOSAR Standard	Classic Platform
Part of Standard Release	R19-11

Document Change History			
Date	Release	Changed by	Change Description
2019-11-28	R19-11	AUTOSAR Release Management	<ul style="list-style-type: none"> • Editorial changes in Upracing (from “SRS_” to “RS_”) • Changed Document Status from Final to published
2018-10-31	4.4.0	AUTOSAR Release Management	<ul style="list-style-type: none"> • Harmonized Parameter Structures • Adapted Specification • Small bug fixes
2017-12-08	4.3.1	AUTOSAR Release Management	<ul style="list-style-type: none"> • Clarified signature of callbacks • Clarification in Error handling • Removed some DET errors from DET itself.

Document Change History			
Date	Release	Changed by	Change Description
2016-11-30	4.3.0	AUTOSAR Release Management	<ul style="list-style-type: none">• Improved Sequence Diagrams• Added Description of Callouts (8.1.5)• Changed Port Defined Arguments in Service• Improved traceability• Added DetModuleInstance parameter• Made TransientFaults an BSW-Service
2015-07-31	4.2.2	AUTOSAR Release Management	<ul style="list-style-type: none">• Harmonized Traceability• Ensured consistent usage of development errors in all modules

Document Change History			
Date	Release	Changed by	Change Description
2014-10-31	4.2.1	AUTOSAR Release Management	<ul style="list-style-type: none"> Extended & renamed DevelopmentErrorTracer to DefaultErrorTracer by adding routines New Routines Det_ReportRountineError and Det_ReportTransientFault New configuration paramaters Det_ReportRountineErrorCallout and Det_ReportTransientFaultCallout
2014-03-31	4.1.3	AUTOSAR Release Management	<ul style="list-style-type: none"> Improved requirement format of SWS_DET_00050
2013-10-31	4.1.2	AUTOSAR Release Management	<ul style="list-style-type: none"> Structural but non-functional improvements in document structure and creation Editorial changes Removed chapter(s) on change documentation
2013-03-15	4.1.1	AUTOSAR Administration	<ul style="list-style-type: none"> Harmonized requirements according to SWS_General Formalized service descriptions
2011-12-22	4.0.3	AUTOSAR Administration	<ul style="list-style-type: none"> Clarifications related to include structure etc.
2010-09-30	3.1.5	AUTOSAR Administration	<ul style="list-style-type: none"> DLT is now an optional interface of DET Harmonized parameter error handling Removed known limitation of Revision 4.0.1
2010-02-02	3.1.4	AUTOSAR Administration	<ul style="list-style-type: none"> Changed Tracing to requirements now located in SRS_Debugging Added a Std_ReturnType value to Det_ReportError Harmonized configuration classes Adopted to the changed general requirements Legal disclaimer revised Chapter 10.3 revised

Document Change History			
Date	Release	Changed by	Change Description
2008-08-13	3.1.1	AUTOSAR Administration	<ul style="list-style-type: none">• Legal disclaimer revised
2008-02-01	3.0.2	AUTOSAR Administration	<ul style="list-style-type: none">• Added API GetVersionInfo to harmonize SWS with AUTOSAR conventions• Document meta information extended• Small layout adaptations made
2007-12-21	3.0.1	AUTOSAR Administration	<ul style="list-style-type: none">• Added SRS_BSW_00436 to traceability matrix• Added Memmap.h• Added Chapter 11• Legal disclaimer revised• “Advice for users” revised• “Revision Information” added
2006-05-16	2.0	AUTOSAR Administration	<ul style="list-style-type: none">• Changed to new SWS template
2005-05-31	1.0	AUTOSAR Administration	<ul style="list-style-type: none">• Initial Release

Disclaimer

This work (specification and/or software implementation) and the material contained in it, as released by AUTOSAR, is for the purpose of information only. AUTOSAR and the companies that have contributed to it shall not be liable for any use of the work.

The material contained in this work is protected by copyright and other types of intellectual property rights. The commercial exploitation of the material contained in this work requires a license to such intellectual property rights.

This work may be utilized or reproduced without any modification, in any form or by any means, for informational purposes only. For any other purpose, no part of the work may be utilized or reproduced, in any form or by any means, without permission in writing from the publisher.

The work has been developed for automotive applications only. It has neither been developed, nor tested for non-automotive applications.

The word AUTOSAR and the AUTOSAR logo are registered trademarks.

Table of Contents

1	Introduction and functional overview	8
2	Acronyms and abbreviations	9
3	Related documentation.....	10
3.1	Input documents.....	10
3.2	Related standards and norms	10
3.3	Related specification	10
4	Constraints and assumptions	11
4.1	Limitations	11
4.2	Applicability to car domains.....	11
5	Dependencies to other modules.....	12
5.1	File structure.....	12
6	Requirements traceability	13
7	Functional specification	20
7.1	Initialization.....	20
7.2	Error Hooks	20
7.3	Error Reporting.....	21
7.4	Version Information	22
7.5	Error Classification	22
7.5.1	Development Errors	23
7.5.2	Runtime Errors.....	23
7.5.3	Transient Faults	23
7.5.4	Production Errors.....	23
7.5.5	Extended Production Errors.....	23
7.6	Error detection.....	23
7.7	Error notification	24
8	API specification.....	25
8.1	API.....	25
8.1.1	Imported types	25
8.1.2	Type definitions.....	25
8.1.3	Function definitions.....	25
8.1.4	Expected Interfaces	30
8.1.5	Callout Functions / Configurable Interfaces	30
8.2	Service Interfaces.....	33
8.2.1	Specification of the Ports and Port Interfaces	33
8.2.2	Definition of the Service	35
8.2.3	Configuration of the DET	36
9	Sequence diagrams	37
9.1	Initialization.....	37
9.2	Error Reporting.....	37
10	Configuration specification.....	40
10.1	Containers and configuration parameters	40

10.1.1	Det.....	41
10.1.2	DetGeneral	42
10.1.3	DetNotification	43
10.1.4	DetConfigSet	44
10.1.5	DetModule	44
10.1.6	DetModuleInstance.....	45
10.2	Published Information.....	46
11	Not applicable requirements	47

1 Introduction and functional overview

This specification describes the API of the Default Error Tracer. All detected development and runtime errors in the Basic Software are reported to this module. The API parameters allow for tracing source and kind of error:

- Module in which error has been detected
- Function in which error has been detected
- Type of error

The functionality behind the API of this module is not in scope of this specification. It is up to the software developer and software integrator to choose the optimal strategy for his specific application and testing environment. Possible functionalities could be:

- Set debugger breakpoint within error reporting API
- Count reported errors
- Handle the runtime errors by using default values
- Log calls and passed parameters in RAM buffer
- Send reported errors via communication interface to external logger

Note: The software requirements of the Default Error Tracer are specified in the SRS Diagnostics document.

2 Acronyms and abbreviations

DET: Default Error Tracer.

3 Related documentation

3.1 Input documents

- [1] List of Basic Software Modules,
AUTOSAR_TR_BSWModuleList.pdf
- [2] Layered Software Architecture,
AUTOSAR_EXP_LayeredSoftwareArchitecture.pdf
- [3] General Requirements on Basic Software Modules,
AUTOSAR_SRS_BSWGeneral.pdf
- [4] Basic Software Module Description Template,
AUTOSAR_TPS_BSWModuleDescriptionTemplate.pdf
- [5] Specification of ECU Configuration,
AUTOSAR_TPS_ECUConfiguration.pdf
- [6] General Requirements on Basic Software Modules
AUTOSAR_SRS_BSWGeneral.pdf
- [7] General Specification of Basic Software Modules
AUTOSAR_SWS_BSWGeneral.pdf

3.2 Related standards and norms

Not applicable.

3.3 Related specification

The functional requirements of the DET are contained in the SRS BSW [6] in Section “Fault Oepration and Error Detection”.

AUTOSAR provides a General Specification on Basic Software modules [7] (SWS BSW General), containing Section “Error Classification” with information how to design error handling.

4 Constraints and assumptions

4.1 Limitations

This specification does not define the functionality behind the error reporting API.
Memory protection mechanisms of the operating system are not taken into account.

4.2 Applicability to car domains

No restrictions.

5 Dependencies to other modules

5.1 File structure

[SWS_Det_00037] [Det.h includes all user relevant information for the tracing of errors reported via its services.] (SRS_BSW_00346)

6 Requirements traceability

Requirement	Description	Satisfied by
RS_Diag_04085	-	SWS_Det_00009
RS_Diag_04086	-	SWS_Det_00009, SWS_Det_01001, SWS_Det_01003
RS_Diag_04087	-	SWS_Det_00202, SWS_Det_00205
RS_Diag_04143	-	SWS_Det_01001
RS_Diag_04144	-	SWS_Det_01003
SRS_ARTICP_04087	The Default Error Tracer shall provide a development error report reception service	SWS_Det_00204
SRS_BSW_00004	All Basic SW Modules shall perform a pre-processor check of the versions of all imported include files	SWS_Det_00999
SRS_BSW_00005	Modules of the μ C Abstraction Layer (MCAL) may not have hard coded horizontal interfaces	SWS_Det_00999
SRS_BSW_00006	The source code of software modules above the μ C Abstraction Layer (MCAL) shall not be processor and compiler dependent.	SWS_Det_00999
SRS_BSW_00007	All Basic SW Modules written in C language shall conform to the MISRA C 2012 Standard.	SWS_Det_00999
SRS_BSW_00009	All Basic SW Modules shall be documented according to a common standard.	SWS_Det_00999
SRS_BSW_00010	The memory consumption of all Basic SW Modules shall be documented for a defined configuration for all supported platforms.	SWS_Det_00999
SRS_BSW_00101	The Basic Software Module shall be able to initialize variables and hardware in a separate initialization function	SWS_Det_00019, SWS_Det_00020
SRS_BSW_00158	-	SWS_Det_00999
SRS_BSW_00159	All modules of the AUTOSAR Basic Software shall support a tool based configuration	SWS_Det_00018
SRS_BSW_00160	Configuration files of AUTOSAR Basic SW module shall be readable for human beings	SWS_Det_00999
SRS_BSW_00161	The AUTOSAR Basic Software shall provide a microcontroller abstraction layer which provides a standardized interface to higher software layers	SWS_Det_00999
SRS_BSW_00162	The AUTOSAR Basic Software shall provide a hardware abstraction layer	SWS_Det_00999
SRS_BSW_00164	The Implementation of interrupt service routines shall be done by the Operating	SWS_Det_00999

	System, complex drivers or modules	
SRS_BSW_00167	All AUTOSAR Basic Software Modules shall provide configuration rules and constraints to enable plausibility checks	SWS_Det_00035
SRS_BSW_00168	SW components shall be tested by a function defined in a common API in the Basis-SW	SWS_Det_00999
SRS_BSW_00170	The AUTOSAR SW Components shall provide information about their dependency from faults, signal qualities, driver demands	SWS_Det_00999
SRS_BSW_00171	Optional functionality of a Basic-SW component that is not required in the ECU shall be configurable at pre-compile-time	SWS_Det_00015
SRS_BSW_00172	The scheduling strategy that is built inside the Basic Software Modules shall be compatible with the strategy used in the system	SWS_Det_00999
SRS_BSW_00301	All AUTOSAR Basic Software Modules shall only import the necessary information	SWS_Det_00999
SRS_BSW_00304	All AUTOSAR Basic Software Modules shall use the following data types instead of native C data types	SWS_Det_00999
SRS_BSW_00305	Data types naming convention	SWS_Det_00999
SRS_BSW_00306	AUTOSAR Basic Software Modules shall be compiler and platform independent	SWS_Det_00999
SRS_BSW_00307	Global variables naming convention	SWS_Det_00999
SRS_BSW_00308	AUTOSAR Basic Software Modules shall not define global data in their header files, but in the C file	SWS_Det_00999
SRS_BSW_00309	All AUTOSAR Basic Software Modules shall indicate all global data with read-only purposes by explicitly assigning the const keyword	SWS_Det_00999
SRS_BSW_00310	API naming convention	SWS_Det_00008, SWS_Det_00009, SWS_Det_00010, SWS_Det_00011, SWS_Det_01001, SWS_Det_01003
SRS_BSW_00312	Shared code shall be reentrant	SWS_Det_00039
SRS_BSW_00314	All internal driver modules shall separate the interrupt frame definition from the service routine	SWS_Det_00999
SRS_BSW_00318	Each AUTOSAR Basic Software Module file shall provide version numbers in the header file	SWS_Det_00011
SRS_BSW_00323	All AUTOSAR Basic Software Modules shall check passed API parameters for validity	SWS_Det_00999
SRS_BSW_00325	The runtime of interrupt service routines and functions that are running in interrupt	SWS_Det_00999

	context shall be kept short	
SRS_BSW_00328	All AUTOSAR Basic Software Modules shall avoid the duplication of code	SWS_Det_00999
SRS_BSW_00330	It shall be allowed to use macros instead of functions where source code is used and runtime is critical	SWS_Det_00999
SRS_BSW_00331	All Basic Software Modules shall strictly separate error and status information	SWS_Det_00999
SRS_BSW_00334	All Basic Software Modules shall provide an XML file that contains the meta data	SWS_Det_00999
SRS_BSW_00335	Status values naming convention	SWS_Det_00999
SRS_BSW_00336	Basic SW module shall be able to shutdown	SWS_Det_00999
SRS_BSW_00337	Classification of development errors	SWS_Det_00026, SWS_Det_00301
SRS_BSW_00339	Reporting of production relevant error status	SWS_Det_00999
SRS_BSW_00341	Module documentation shall contains all needed informations	SWS_Det_00999
SRS_BSW_00342	It shall be possible to create an AUTOSAR ECU out of modules provided as source code and modules provided as object code, even mixed	SWS_Det_00999
SRS_BSW_00343	The unit of time for specification and configuration of Basic SW modules shall be preferably in physical time unit	SWS_Det_00999
SRS_BSW_00344	BSW Modules shall support link-time configuration	SWS_Det_00999
SRS_BSW_00345	BSW Modules shall support pre-compile configuration	SWS_Det_00014
SRS_BSW_00346	All AUTOSAR Basic Software Modules shall provide at least a basic set of module files	SWS_Det_00037
SRS_BSW_00347	A Naming seperation of different instances of BSW drivers shall be in place	SWS_Det_00999
SRS_BSW_00348	All AUTOSAR standard types and constants shall be placed and organized in a standard type header file	SWS_Det_00999
SRS_BSW_00350	All AUTOSAR Basic Software Modules shall allow the enabling/disabling of detection and reporting of development errors.	SWS_Det_00025, SWS_Det_00999
SRS_BSW_00353	All integer type definitions of target and compiler specific scope shall be placed and organized in a single type header	SWS_Det_00999
SRS_BSW_00357	For success/failure of an API call a standard return type shall be defined	SWS_Det_00999
SRS_BSW_00358	The return type of init() functions implemented by AUTOSAR Basic Software Modules shall be void	SWS_Det_00008
SRS_BSW_00359	All AUTOSAR Basic Software Modules callback functions shall avoid return types other than void if possible	SWS_Det_00999

SRS_BSW_00360	AUTOSAR Basic Software Modules callback functions are allowed to have parameters	SWS_Det_00999
SRS_BSW_00361	All mappings of not standardized keywords of compiler specific scope shall be placed and organized in a compiler specific type and keyword header	SWS_Det_00999
SRS_BSW_00369	All AUTOSAR Basic Software Modules shall not return specific development error codes via the API	SWS_Det_00999
SRS_BSW_00371	The passing of function pointers as API parameter is forbidden for all AUTOSAR Basic Software Modules	SWS_Det_00999
SRS_BSW_00373	The main processing function of each AUTOSAR Basic Software Module shall be named according the defined convention	SWS_Det_00999
SRS_BSW_00375	Basic Software Modules shall report wake-up reasons	SWS_Det_00999
SRS_BSW_00377	A Basic Software Module can return a module specific types	SWS_Det_00999
SRS_BSW_00378	AUTOSAR shall provide a boolean type	SWS_Det_00999
SRS_BSW_00379	All software modules shall provide a module identifier in the header file and in the module XML description file.	SWS_Det_00999
SRS_BSW_00380	Configuration parameters being stored in memory shall be placed into separate c-files	SWS_Det_00999
SRS_BSW_00381	-	SWS_Det_00999
SRS_BSW_00383	The Basic Software Module specifications shall specify which other configuration files from other modules they use at least in the description	SWS_Det_00999
SRS_BSW_00385	List possible error notifications	SWS_Det_00999
SRS_BSW_00386	The BSW shall specify the configuration for detecting an error	SWS_Det_00999
SRS_BSW_00388	Containers shall be used to group configuration parameters that are defined for the same object	SWS_Det_00999
SRS_BSW_00389	Containers shall have names	SWS_Det_00999
SRS_BSW_00390	Parameter content shall be unique within the module	SWS_Det_00999
SRS_BSW_00392	Parameters shall have a type	SWS_Det_00035
SRS_BSW_00393	Parameters shall have a range	SWS_Det_00999
SRS_BSW_00394	The Basic Software Module specifications shall specify the scope of the configuration parameters	SWS_Det_00035, SWS_Det_00180
SRS_BSW_00395	The Basic Software Module specifications shall list all configuration parameter dependencies	SWS_Det_00999
SRS_BSW_00396	The Basic Software Module specifications	SWS_Det_00999

	shall specify the supported configuration classes for changing values and multiplicities for each parameter/container	
SRS_BSW_00397	The configuration parameters in pre-compile time are fixed before compilation starts	SWS_Det_00999
SRS_BSW_00398	The link-time configuration is achieved on object code basis in the stage after compiling and before linking	SWS_Det_00999
SRS_BSW_00399	Parameter-sets shall be located in a separate segment and shall be loaded after the code	SWS_Det_00999
SRS_BSW_00400	Parameter shall be selected from multiple sets of parameters after code has been loaded and started	SWS_Det_00999
SRS_BSW_00401	Documentation of multiple instances of configuration parameters shall be available	SWS_Det_00999
SRS_BSW_00403	The Basic Software Module specifications shall specify for each parameter/container whether it supports different values or multiplicity in different configuration sets	SWS_Det_00018
SRS_BSW_00404	BSW Modules shall support post-build configuration	SWS_Det_00999
SRS_BSW_00405	BSW Modules shall support multiple configuration sets	SWS_Det_00999
SRS_BSW_00406	A static status variable denoting if a BSW module is initialized shall be initialized with value 0 before any APIs of the BSW module is called	SWS_Det_00024, SWS_Det_00999
SRS_BSW_00407	Each BSW module shall provide a function to read out the version information of a dedicated module implementation	SWS_Det_00999
SRS_BSW_00409	All production code error ID symbols are defined by the Dem module and shall be retrieved by the other BSW modules from Dem configuration	SWS_Det_00999
SRS_BSW_00410	Compiler switches shall have defined values	SWS_Det_00999
SRS_BSW_00412	-	SWS_Det_00999
SRS_BSW_00413	An index-based accessing of the instances of BSW modules shall be done	SWS_Det_00999
SRS_BSW_00414	Init functions shall have a pointer to a configuration structure as single parameter	SWS_Det_00008, SWS_Det_00210
SRS_BSW_00415	Interfaces which are provided exclusively for one module shall be separated into a dedicated header file	SWS_Det_00999
SRS_BSW_00416	The sequence of modules to be initialized shall be configurable	SWS_Det_00999
SRS_BSW_00417	Software which is not part of the SW-C shall report error events only after the DEM is	SWS_Det_00999

	fully operational.	
SRS_BSW_00419	If a pre-compile time configuration parameter is implemented as "const" it should be placed into a separate c-file	SWS_Det_00999
SRS_BSW_00422	Pre-de-bouncing of error status information is done within the DEM	SWS_Det_00999
SRS_BSW_00423	BSW modules with AUTOSAR interfaces shall be describable with the means of the SW-C Template	SWS_Det_00999
SRS_BSW_00424	BSW module main processing functions shall not be allowed to enter a wait state	SWS_Det_00999
SRS_BSW_00425	The BSW module description template shall provide means to model the defined trigger conditions of schedulable objects	SWS_Det_00999
SRS_BSW_00426	BSW Modules shall ensure data consistency of data which is shared between BSW modules	SWS_Det_00999
SRS_BSW_00427	ISR functions shall be defined and documented in the BSW module description template	SWS_Det_00999
SRS_BSW_00428	A BSW module shall state if its main processing function(s) has to be executed in a specific order or sequence	SWS_Det_00999
SRS_BSW_00429	Access to OS is restricted	SWS_Det_00999
SRS_BSW_00432	Modules should have separate main processing functions for read/receive and write/transmit data path	SWS_Det_00999
SRS_BSW_00433	Main processing functions are only allowed to be called from task bodies provided by the BSW Scheduler	SWS_Det_00999
SRS_BSW_00437	Memory mapping shall provide the possibility to define RAM segments which are not to be initialized during startup	SWS_Det_00999
SRS_BSW_00438	Configuration data shall be defined in a structure	SWS_Det_00999
SRS_BSW_00439	Enable BSW modules to handle interrupts	SWS_Det_00999
SRS_BSW_00440	The callback function invocation by the BSW module shall follow the signature provided by RTE to invoke servers via Rte_Call API	SWS_Det_00999
SRS_BSW_00441	Naming convention for type, macro and function	SWS_Det_00999
SRS_BSW_00458	Classification of production errors	SWS_Det_00999
SRS_BSW_00463	Naming convention of callout prototypes	SWS_Det_00180, SWS_Det_00181, SWS_Det_00184, SWS_Det_00187
SRS_BSW_00466	Classification of extended production errors	SWS_Det_00999
SRS_BSW_00480	NullPointer Errors shall follow a naming rule	SWS_Det_00052

7 Functional specification

The Default Error Tracer provides functionality to support error detection and tracing of errors during the development and runtime of Software Components and other Basic Software Modules. For this purpose the Default Error Tracer receives and evaluates error messages from these components and modules.

Due to the always specific (non generic!) requirements regarding functionality in error cases there is no explicit specification of the DET implementation, except:

- Configurable lists of error hooks will be executed in case of an error report.
- Interfaces will be provided to report errors, allow optional error recovery after reset, to handle optional error recovery information and to retrieve version information.

7.1 Initialization

[SWS_Det_00019] | The DET shall provide the initialization function `Det_Init` (see [SWS_Det_00008](#)).] (SRS_BSW_00101)

[SWS_Det_00020] | Each call of the `Det_Init` function shall be used to set the Default Error Tracer to a defined initial status (e.g. by removing optional error recovery information).] (SRS_BSW_00101)

Note: SWS_Det_00020 is not testable without knowledge about the non specified functionality and the probably used optional error recovery information.

Note: The usage and meaning of error recovery information is optional and not specified.

[SWS_Det_00025] | The Default Error Tracer shall provide the function `Det_Start` (see [SWS_Det_00010](#)).] (SRS_BSW_00350)

Note: The Default Error Tracer's environment can use the function `Det_Start` to trigger the Default Error Tracer module for instance (if needed) in case of completed NVRAM initialization for persistent error storage.

Note: In case the Default Error Tracer does not require a startup call the `Det_Start` function can be empty.

Note: The integrator can decide by configuration of the EcuM, when `Det_Init` will be called.

Note: The integrator can decide by configuration of the EcuM or ModeM, when and whether `Det_Start` will be called.

7.2 Error Hooks

[SWS_Det_00207] | To support debugging and error tracing during development and runtime, the Default Error Tracer provides functionality for notification of received

error reports. Therefore so called error hooks are configurable. The error hooks will be used to forward error notifications. If at least one error hook has been configured, the Default Error Tracer will notify each received error report by calling the configured error hook(s). Configuration of error hooks is done by the AUTOSAR configuration methods described in chapter 10.] ()

[SWS_Det_00035] | Each Error_Hook shall be called with the same set of parameters as the corresponding functions Det_ReportError, Det_ReportTransientFault and Det_ReportRuntimeError. The configured callout functions are ECU configurations, see ECUC_DET_00005, ECUC_DET_00010 and ECUC_DET_00011] (SRS_BSW_00167,SRS_BSW_00392, SRS_BSW_00394)

7.3 Error Reporting

[SWS_Det_00024] | If the Default Error Tracer has not been initialized before Det reporting functions are called, the reporting functions shall return immediately without any other action (no Error_Hook shall be used, no implementer specific function shall be performed and no error shall be reported).] (SRS_BSW_00406)

[SWS_Det_00014] | The error report functions Det_ReportError, Det_ReportTransientFault and Det_ReportRuntimeError shall call immediately all configured Error_Hooks (see ECUC_Det_00010, ECUC_Det_00011).] (SRS_BSW_00345)

[SWS_Det_00018] | The Default Error Tracer shall execute the corresponding list of configured DetErrorHook (refer to ECUC_Det_00005) in the order given by the configuration.] (SRS_BSW_00403,SRS_BSW_00159)

[SWS_Det_00015] | Optional implementation specific functionality shall only be performed after all configured Error_Hooks (see ECUC_Det_00010 and ECUC_Det_00011) have been called. Furthermore this functionality shall be pre-compile-time configurable] (SRS_BSW_00171)

[SWS_Det_00034] | Each call of the Det_ReportError, Det_ReportTransientFault and Det_ReportRuntimeError function shall be forwarded to the DLT module, if this is available/configured.] ()

[SWS_Det_00039] | The Det_ReportError, Det_ReportTransientFault and Det_ReportRuntimeError functions shall be reentrant.] (SRS_BSW_00312)

[SWS_Det_00026] | Det_ReportError shall stop execution. Ensure that DET runtime errors and DET transient faults are handled such that DET is not called recursively.] (SRS_BSW_00337)

Note: Such recursive call could happen in case of calling an un-initialized module via an Error_Hook and would lead to a stack overflow.

7.4 Version Information

No deviations from specified handling in BSW_General.

7.5 Error Classification

The Default Error Tracer has the following AUTOSAR errors:

- Development errors, see Section 7.5.1
- Runtime errors: not applicable
- Transient faults: not applicable
- Production errors: not applicable
- Extended production errors: not applicable

7.5.1 Development Errors

DET cannot report development errors except the DET_E_PARAM_POINTER in Det_GetVersionInfo:

[SWS_Det_00301] Development Error Types

Type of error	Related error code	Value [hex]
Det_GetVersionInfo called with null parameter pointer	DET_E_PARAM_POINTER	0x01

] (SRS_BSW_00337)

7.5.2 Runtime Errors

DET cannot report runtime errors.

7.5.3 Transient Faults

DET cannot report transient faults.

7.5.4 Production Errors

There are no production errors in DET.

7.5.5 Extended Production Errors

There are no extended production errors in DET.

7.6 Error detection

The call of default error functions will cause calls to all configured callout functions see parameter DetErrorHook, DetReportTransientFault and DetReportRuntimeError.

[SWS_Det_00501] [The calls of Det_ReportError shall invoke all callback functions configured in DetErrorHook (see parameter DetErrorHook, ECUC_Det_00005).(SRS_BSW_00345)

[SWS_Det_00502] [The calls of Det_ReportTransientFault shall invoke all callback functions configured in DetReportTransientFaultCallout (ECUC_Det_00011). (SRS_BSW_00345)

[SWS_Det_00503] [The calls of Det_ReportRuntimeError shall invoke all callback functions configured in DetReportRuntimeErrorCallout (ECUC_Det_00010). (SRS_BSW_00345)

Note: In case no Error_Hooks are configured no additional functions are called. However the forwarding to DLT (see DET0340 and SWS_Det_00006_Conf) is still active if configured.

7.7 Error notification

[SWS_Det_00052] [The DET shall notify the error DET_E_PARAM_POINTER to all functions configured in callouts in case a null pointer error occurs in Det_GetVersionInfo.] (SRS_BSW_00480)

8 API specification

The specification of the default error tracer API is provided here.

8.1 API

8.1.1 Imported types

This section lists all imported types used by the API. Even if the DET does not require new types, some RTE or Component types can be used within the configuration of the hook functions. Therefore the DET also has the standardized include structure (see SRS_BSW_00447) for modules with service interfaces.

[]

<i>Module</i>	<i>Header File</i>	<i>Imported Type</i>
Std	Std_Types.h	Std_ReturnType
	Std_Types.h	Std_VersionInfoType

]()

8.1.2 Type definitions

8.1.2.1 Det_ConfigType

[SWS_Det_00210]

Name	Det_ConfigType	
Kind	Structure	
Elements	implementation specific	
	Type	--
	Comment	--
Description	Configuration data structure of the Det module.	
Available via	Det.h	

](SRS_BSW_00414)

8.1.3 Function definitions

8.1.3.1 Det_Init

[SWS_Det_00008]

Service Name	Det_Init
---------------------	----------

Syntax	<pre>void Det_Init (const Det_ConfigType* ConfigPtr)</pre>	
Service ID [hex]	0x00	
Sync/Async	Synchronous	
Reentrancy	Non Reentrant	
Parameters (in)	ConfigPtr	Pointer to the selected configuration set.
Parameters (inout)	None	
Parameters (out)	None	
Return value	None	
Description	Service to initialize the Default Error Tracer.	
Available via	Det.h	

(SRS_BSW_00310, SRS_BSW_00358, SRS_BSW_00414)

8.1.3.2 Det_ReportError

[SWS_Det_00009]

Service Name	Det_ReportError	
Syntax	<pre>Std_ReturnType Det_ReportError (uint16 ModuleId, uint8 InstanceId, uint8 ApiId, uint8 ErrorId)</pre>	
Service ID [hex]	0x01	
Sync/Async	Not Applicable: The function never returns	
Reentrancy	Reentrant	
Parameters (in)	ModuleId	Module ID of calling module.
	InstanceId	The identifier of the index based instance of a module, starting from 0, If the module is a single instance module it shall pass 0 as the InstanceId.
	ApiId	ID of API service in which error is detected (defined in SWS of calling module)
	ErrorId	ID of detected development error (defined in SWS of calling module).
Parameters (inout)	None	
Parameters (out)	None	

Return value	Std_ReturnType	never returns a value, but has a return type for compatibility with services and hooks
Description	Service to report development errors.	
Available via	Det.h	

](SRS_BSW_00310, RS_Diag_04086, RS_Diag_04085)

Note: Det_ReportError may be callable in interrupt context. Since the DET can be called in normal mode or in interrupt context (from stack or integration) this has to be considered during implementation of the hook functions: Det_ReportError can be called in interrupt context; this should be considered when halting the system.

8.1.3.3 Det_Start

[SWS_Det_00010][

Service Name	Det_Start
Syntax	<pre>void Det_Start (void)</pre>
Service ID [hex]	0x02
Sync/Async	Synchronous
Reentrancy	Non Reentrant
Parameters (in)	None
Parameters (inout)	None
Parameters (out)	None
Return value	None
Description	Service to start the Default Error Tracer.
Available via	Det.h

](SRS_BSW_00310)

8.1.3.4 Det_ReportRuntimeError

[SWS_Det_01001][

Service Name	Det_ReportRuntimeError
Syntax	<pre>Std_ReturnType Det_ReportRuntimeError (uint16 ModuleId, uint8 InstanceId, uint8 ApiId, uint8 ErrorId)</pre>

Service ID [hex]	0x04	
Sync/Async	Synchronous	
Reentrancy	Reentrant	
Parameters (in)	ModuleId	Module ID of calling module.
	InstanceId	The identifier of the index based instance of a module, starting from 0, If the module is a single instance module it shall pass 0 as the InstanceId.
	ApiId	ID of API service in which error is detected (defined in SWS of calling module)
	ErrorId	ID of detected runtime error (defined in SWS of calling module).
Parameters (inout)	None	
Parameters (out)	None	
Return value	Std_ReturnType	returns always E_OK (is required for services)
Description	Service to report runtime errors. If a callout has been configured then this callout shall be called.	
Available via	Det.h	

J(SRS_BSW_00310, RS_Diag_04086, RS_Diag_04143)

Note: Det_ReportRuntimeError may be callable in interrupt context. Since the DET can be called in normal mode or in interrupt context (from stack or integration) this has to be considered during implementation of the hook functions: Det_ReportRuntimeError can be called in interrupt context; this hook should be reentrant and sufficiently performant.

8.1.3.5 Det_ReportTransientFault

[SWS_Det_01003]

Service Name	Det_ReportTransientFault	
Syntax	<pre>Std_ReturnType Det_ReportTransientFault (uint16 ModuleId, uint8 InstanceId, uint8 ApiId, uint8 FaultId)</pre>	
Service ID [hex]	0x05	
Sync/Async	Synchronous	
Reentrancy	Reentrant	

Parameters (in)	ModuleId	Module ID of calling module.
	Instance Id	The identifier of the index based instance of a module, starting from 0, If the module is a single instance module it shall pass 0 as the InstanceId.
	ApId	ID of API service in which transient fault is detected (defined in SWS of calling module)
	FaultId	ID of detected transient fault (defined in SWS of calling module).
Parameters (inout)	None	
Parameters (out)	None	
Return value	Std_Return-Type	If no callout exists it shall return E_OK, otherwise it shall return the value of the configured callout. In case several callouts are configured the logical or (sum) of the callout return values shall be returned. Rationale: since E_OK=0, E_OK will be only returned if all are E_OK, and for multiple error codes there is a good chance to detect several of them.
Description	Service to report transient faults. If a callout has been configured than this callout shall be called and the returned value of the callout shall be returned. Otherwise it returns immediately with E_OK.	
Available via	Det.h	

(SRS_BSW_00310, RS_Diag_04086, RS_Diag_04144)

Note: Det_ReportTransientFault may be callable in interrupt context. Since the DET can be called in normal mode or in interrupt context (from stack or integration) this has to be considered during implementation of the hook functions:

Det_ReportTransientFault can be called in interrupt context; this hook should be reentrant and sufficiently performant.

8.1.3.6 Det_GetVersionInfo

[SWS_Det_00011]

Service Name	Det_GetVersionInfo	
Syntax	<pre>void Det_GetVersionInfo (Std_VersionInfoType* versioninfo)</pre>	
Service ID [hex]	0x03	
Sync/Async	Synchronous	
Reentrancy	Reentrant	
Parameters (in)	None	
Parameters (inout)	None	
Parameters (out)	versioninfo	Pointer to where to store the version information of this module.
Return value	None	

Description	Returns the version information of this module.
Available via	Det.h

(SRS_BSW_00310, SRS_BSW_00318)

In case a null pointer is passed, DET_E_PARAM_POINTER is returned, see SWS_Det_00052.

8.1.4 Expected Interfaces

This chapter specifies all required interfaces of other modules.

8.1.4.1 Mandatory Interfaces

There is no mandatory expected interface, but all <User_ErrorHooks> APIs that are used and are configured as callouts have to be included.

Note: The name of the user API will not be specified, <User_ErrorHook> is a synonym only.

Note: A list of User_ErrorHook can be defined.

8.1.4.2 Optional Interfaces

This chapter defines the interfaces that are required to fulfill an optional functionality of the Default Error Tracer.

[SWS_Det_00211] [] []

API Function	Header File	Description
Dlt_DetForwardErrorTrace	Dlt_Det.h	Service to forward error reports from Det to Dlt.

]() ()

8.1.5 Callout Functions / Configurable Interfaces

[SWS_Det_00180] [] if callout functions are configured, they should have the same signatures as the corresponding functions. If several callouts are defined for the same service they should have the same ID.] (SRS_BSW_00463,SRS_BSW_00394)

If Det_ReportError function is called, all configured callout functions shall be called (see SWS_Det_00501). User_ErrorHooks functions should have the Service ID 0x10.

[SWS_Det_00181] []

Service Name	<User_Error_Hooks>
Syntax	Std_ReturnType <User_Error_Hooks> (uint16 ModuleId, uint8 InstanceId,

	<pre>uint8 ApiId, uint8 ErrorId)</pre>	
Service ID [hex]	0x10	
Sync/Async	Synchronous	
Reentrancy	Reentrant	
Parameters (in)	ModuleId	Module ID of calling module.
	InstanceId	The identifier of the index based instance of a module, starting from 0, If the module is a single instance module it shall pass 0 as the InstanceId.
	ApiId	ID of API service in which error is detected (defined in SWS of calling module)
	ErrorId	ID of detected development error (defined in SWS of calling module).
Parameters (inout)	None	
Parameters (out)	None	
Return value	Std_ReturnType	returns always E_OK (is required for services)
Description	--	
Available via	Det_Externals.h	

](SRS_BSW_00463)

If Det_ReportRuntimeError function is called, all configured callout functions shall be called (see SWS_Det_00503). DetReportRuntimeErrorCallout functions should have the Service ID 0x11.

[SWS_Det_00184]

Service Name	<DetReportRuntimeErrorCallout>	
Syntax	<pre>Std_ReturnType <DetReportRuntimeErrorCallout> (uint16 ModuleId, uint8 InstanceId, uint8 ApiId, uint8 ErrorId)</pre>	
Service ID [hex]	0x11	
Sync/Async	Synchronous	
Reentrancy	Reentrant	
Parameters	ModuleId	Module ID of calling module.

(in)	Instanceld	The identifier of the index based instance of a module, starting from 0, If the module is a single instance module it shall pass 0 as the Instanceld.
	Apild	ID of API service in which error is detected (defined in SWS of calling module)
	Errorld	ID of detected runtime error (defined in SWS of calling module).
Parameters (inout)	None	
Parameters (out)	None	
Return value	Std_ReturnType	returns always E_OK (is required for services)
Description	--	
Available via	Det_Externals.h	

](SRS_BSW_00463)

If Det_ReportTransientFault function is called, all configured callout functions shall be called (see SWS_Det_00502). DetReportTransientFaultCallout functions should have the Service ID 0x12.

[SWS_Det_00187]

Service Name	<DetReportTransientFaultCallout>	
Syntax	<pre>Std_ReturnType <DetReportTransientFaultCallout> (uint16 ModuleId, uint8 InstanceId, uint8 ApiId, uint8 FaultId)</pre>	
Service ID [hex]	0x12	
Sync/Async	Synchronous	
Reentrancy	Reentrant	
Parameters (in)	ModuleId	Module ID of calling module.
	Instanceld	The identifier of the index based instance of a module, starting from 0, If the module is a single instance module it shall pass 0 as the Instanceld.
	Apild	ID of API service in which transient fault is detected (defined in SWS of calling module)
	FaultId	ID of detected transient fault (defined in SWS of calling module).
Parameters (inout)	None	

Parameters (out)	None	
Return value	Std_ReturnType	Value is propagated to caller of Det_ReportTransientFault.
Description	--	
Available via	Det_Externals.h	

J(SRS_BSW_00463)

8.2 Service Interfaces

8.2.1 Specification of the Ports and Port Interfaces

This chapter specifies the ports and port interfaces which are needed in order to operate the Default Error Tracer functionality over the VFB.

Each AUTOSAR SW-C which uses the service must contain “service ports” in its own SW-C description which will be typed by the same interfaces and which has to be connected to the ports of the Default Error Tracer, so that the RTE, the appropriate IDs and the required symbols can be generated.

8.2.1.1 General Approach

The client-server paradigm is used since more than one parameter has to be transferred.

In order to reuse the C API already defined in the Default Error Tracer BSW module, the Default Error Tracer services uses the same argument names as in the C API, even though the names can not directly be mapped into the SW-C world. "Module ID" can preferably be interpreted as either a component or runnable entity but this is the decision of the implementer of the SW-C.

The Default Error Tracer services need a "Module ID" as first argument for the C-function.

In order to keep the client code independent from the configuration of number of clients, the "Module IDs" are not passed from the clients to Default Error Tracer but are modeled as "port defined argument values" of the Provide ports on the Default Error Tracer side. As a consequence, the "Module IDs" will not show up as arguments in the operation of the client-server interface. As a further consequence for this approach, there will be separate ports for each "Module ID" both on the client side as well as on the server side.

The Module ID type is of range 0...65535. Values in the range of 0...255 are reserved for Basic Software Modules, all others can be used for application software components.

8.2.1.2 Data Types

[SWS_Det_00200] [For the port interface of the Default Error Tracer service uint8 and uint16 are required and refer to the AUTOSAR data types.] ()

8.2.1.3 Port Interface

[SWS_Det_00202][

Name	DETSERVICE		
Comment	Service of Default Error Tracer		
IsService	true		
Variation	--		
Possible Errors	0	E_OK	Operation successful

Operation	ReportError		
Comment	calls Det_ReportError with the Module ID of the port		
Variation	--		
Parameters	Apild		
	Type	uint8	
	Direction	IN	
	Comment	ID of API service in which error is detected (defined in SWS of calling module).	
	Variation	--	
	ErrorId		
	Type	uint8	
	Direction	IN	
	Comment	ID of detected development error (defined in SWS of calling module).	
	Variation	--	
Possible Errors	E_OK		

Operation	ReportRuntimeError		
Comment	calls ReportRuntimeError with the Module ID of the port		
Variation	--		
Parameters	Apild		
	Type	uint8	

	Direction	IN
	Comment	ID of API service in which error is detected (defined in SWS of calling module).
	Variation	--
	ErrorId	
	Type	uint8
	Direction	IN
	Comment	ID of detected runtime error (defined in SWS of calling module).
	Variation	--
Possible Errors	E_OK	

] (RS_Diag_04087)

[SWS_Det_00203] [The arguments of the C-API ModuleId and InstanceId are used to identify the component and component instance by using "port defined argument values". The arguments Apild and ErrorId are not standardized by AUTOSAR for software components. It is up to the implementer of a SW-C to decide about the semantics of the arguments. However, the Apild typically corresponds to the operations that can report an error, and ErrorId corresponds to the type of error that is reported. Both Apild and ErrorId are numbered 0x00..0xFF without specific order. Note that the returned values is always true (E_OK), since a Std_ReturnType is required for all services] ()

8.2.2 Definition of the Service

[SWS_Det_00204] [The Provide Ports have a certain relation to the internal behavior of the DET: With each call, the "Module ID" is passed as an additional argument by the RTE to the C-function which implements the associated runnable entity (feature "port defined argument value").] (SRS_ARTICP_04087)

The DET shall provide the following Port for each configured SWC module with the given name.

[SWS_Det_00205]

Name	Det_{Name}		
Kind	ProvidedPort	Interface	DETSERVICE
Description	--		
Port Defined Argument Value(s)	Type	uint16	
	Value	{ecuc(Det/DetConfigSet/DetModule/DetModuleId.value)}	
	Type	uint8	
	Value	{ecuc(Det/DetConfigSet/DetModule/DetModuleInstance/Det	

		InstanceId.value}}
Variation	Name = {ecuc(Det/DetConfigSet/DetModule.SHORT-NAME)}_{ecuc(Det/DetConfigSet/DetModule/DetModuleInstance.SHORT-NAME)}	

](RS_Diag_04087)

8.2.3 Configuration of the DET

[SWS_Det_00206] [The "Module IDs" of the DET service are modeled as "port defined argument values". Thus the configuration of those values is part of the RTE configuration. Pre-compile configuration can be done by changing the XML specification for the ports on the client (SW-C) or service (i.e. DET) side.] ()

9 Sequence diagrams

9.1 Initialization

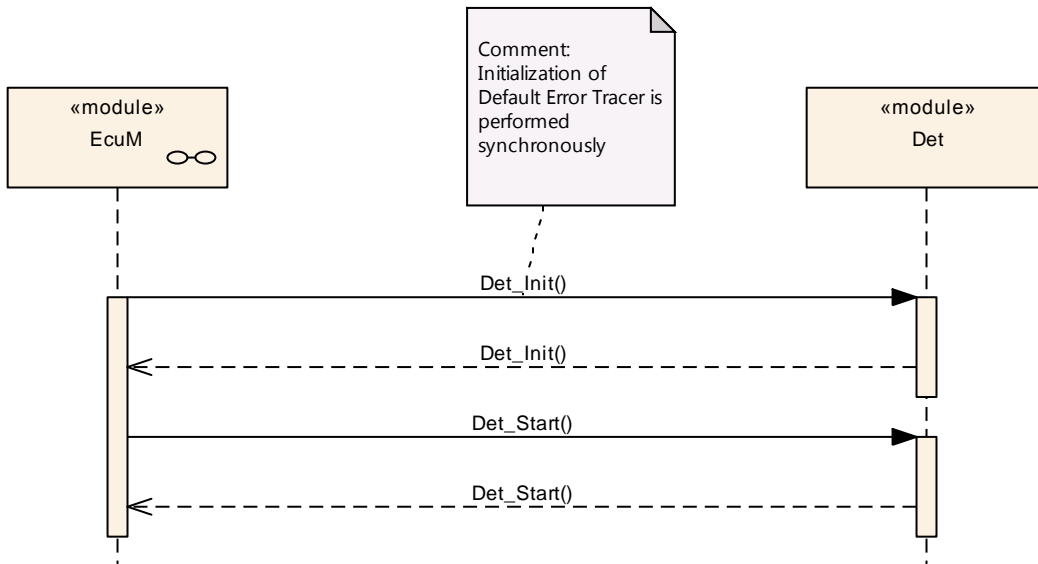


Figure 1: Initialization and start of DET

9.2 Error Reporting

There are different scenarios: one for each error class (DevelopmentError, RuntimeError and TransientFault) and one for each configuration: no hooks configured, at least one hook configured.

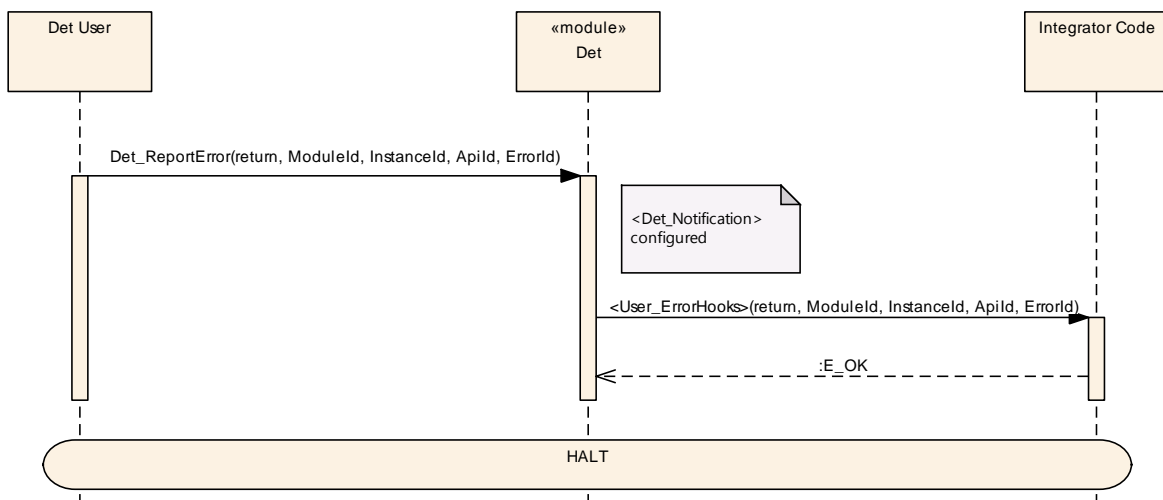


Figure 2 – Det_ReportError with configured hook

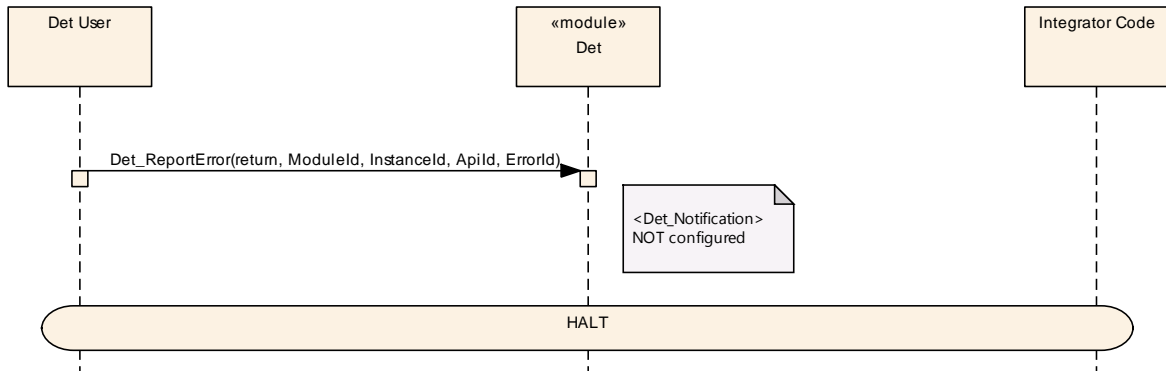


Figure 3 – Det_ReportError without configured hook

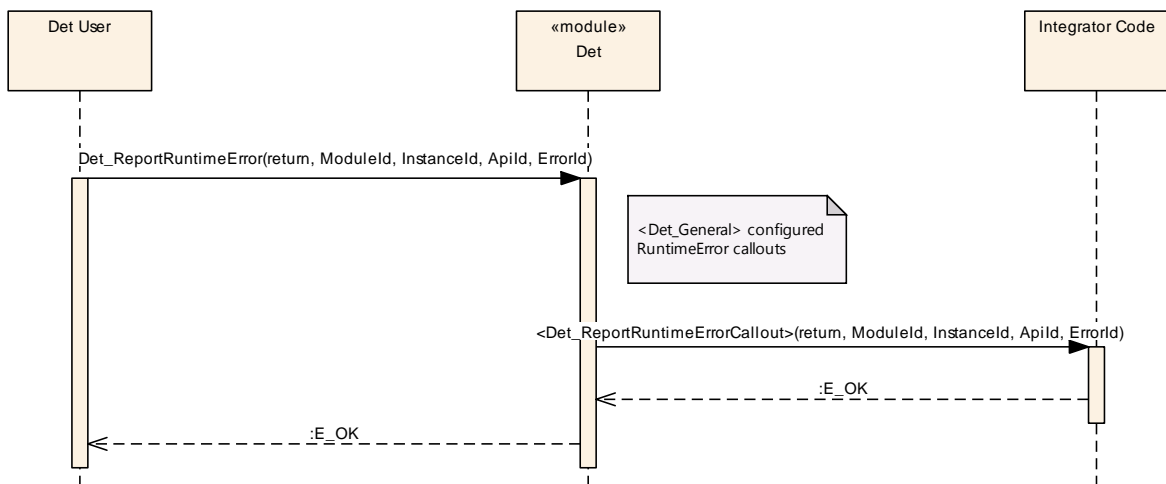


Figure 4 – Det_ReportRuntimeError with configured hook

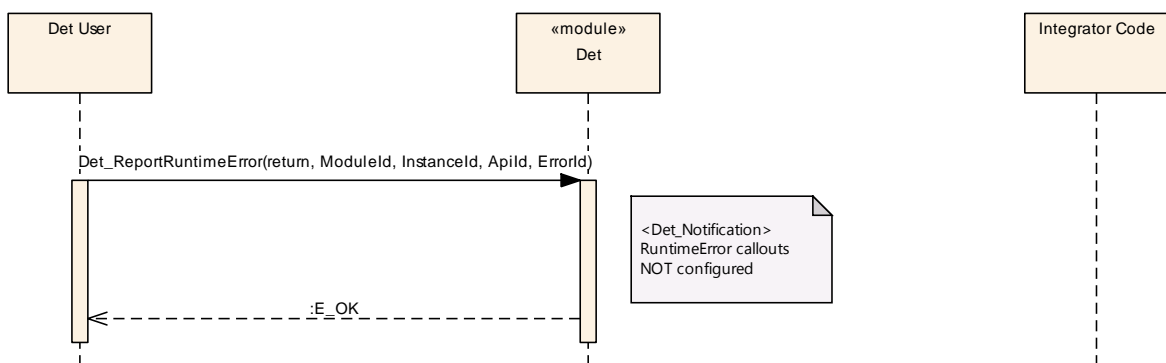


Figure 5 – Det_ReportRuntimeError without configured hook

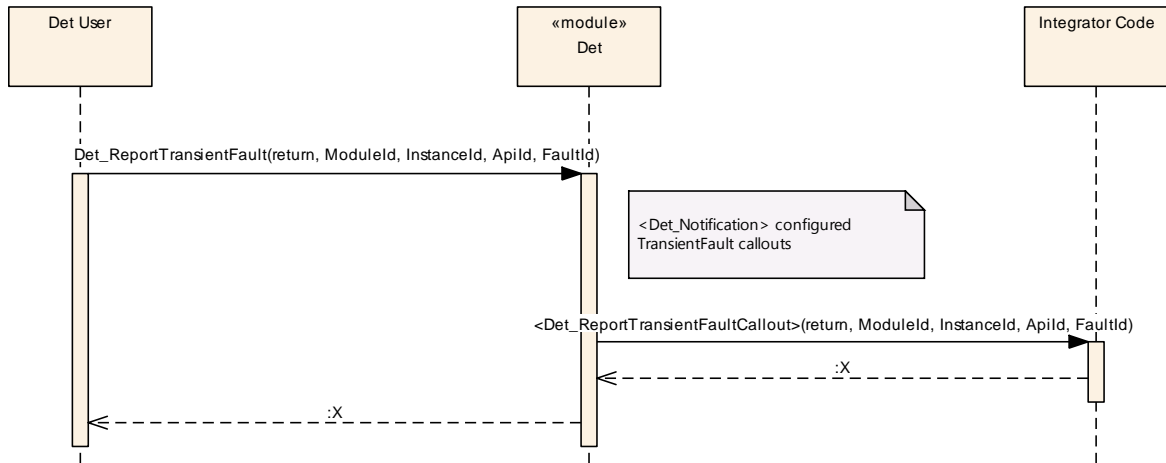


Figure 6 – Det_ReportTransientFault with configured hook

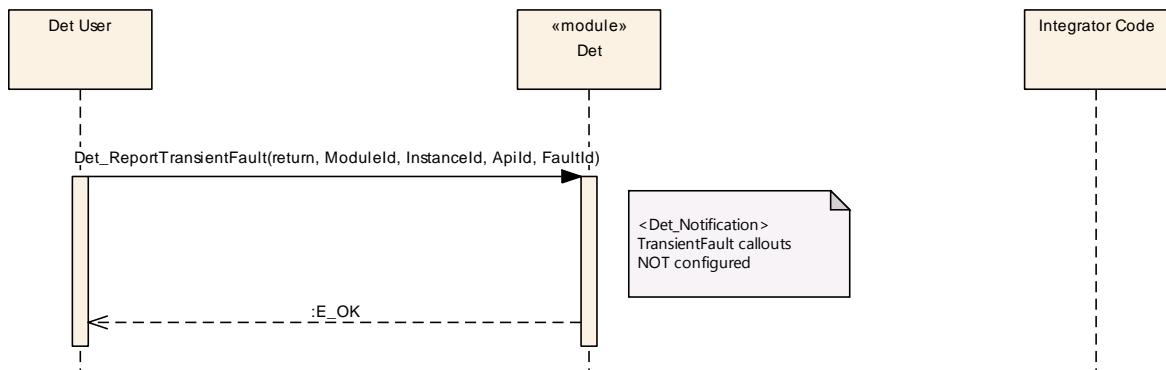


Figure 7 – Det_ReportTransientFault without configured hook

10 Configuration specification

10.1 Containers and configuration parameters

The Parameters of DET are described in the following sub-sections.

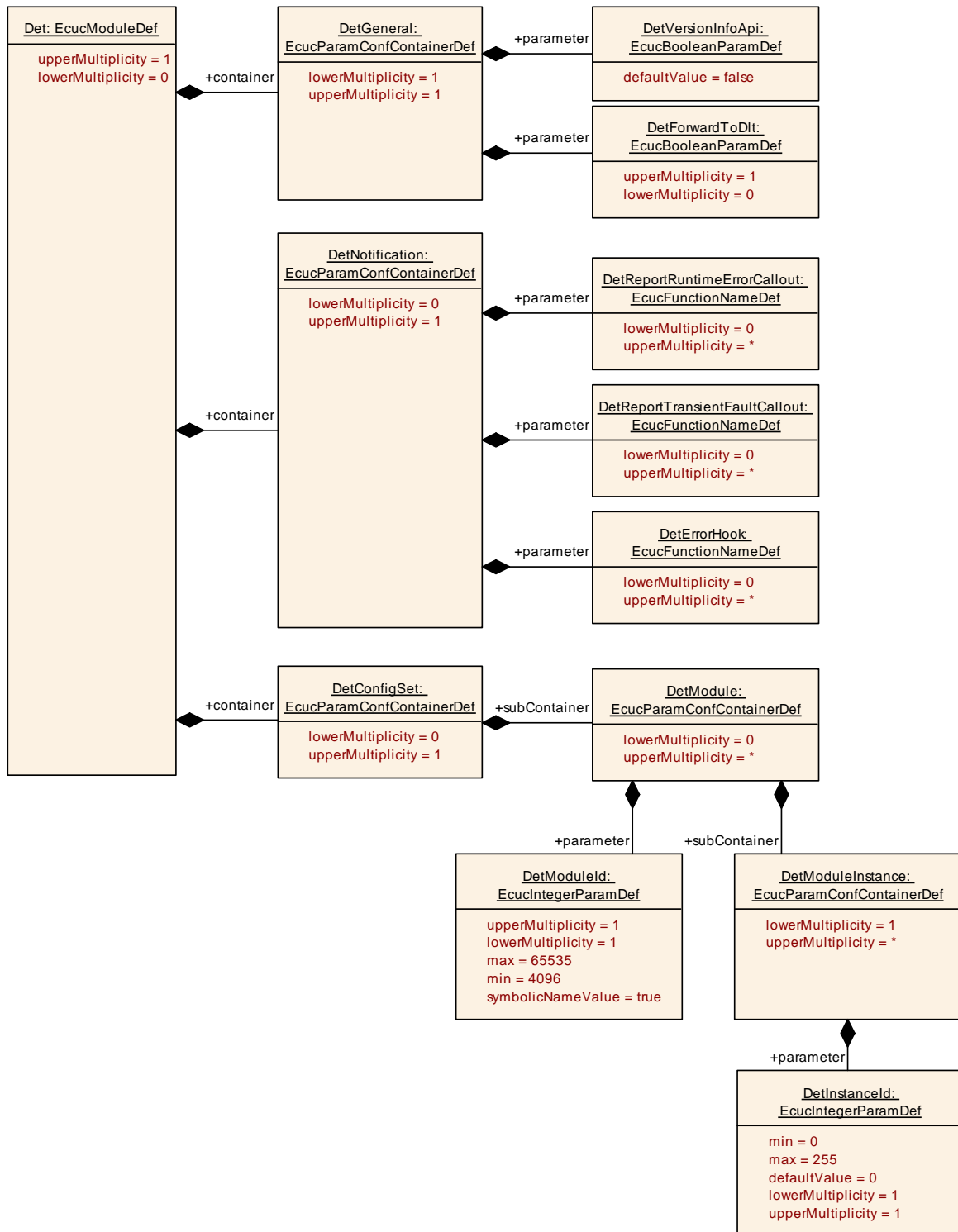


Figure 8 gives an overview over them.

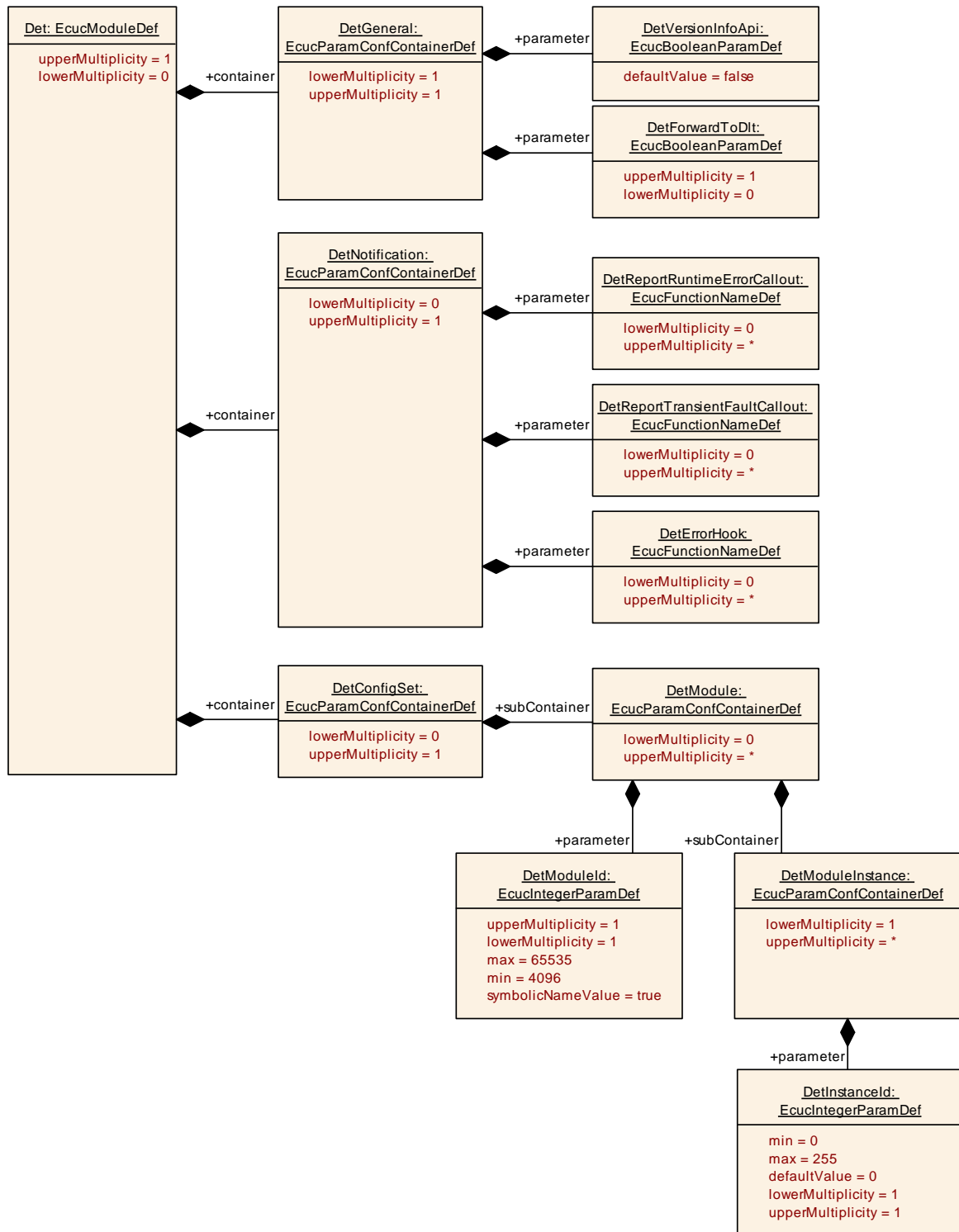


Figure 8: Parameters of DET

10.1.1 Det

SWS Item	ECUC_Det_00001 :
Module Name	Det
Module Description	Det configuration includes the functions to be called at notification. On one

	side the application functions are specified and in general it can be decided whether Dlt shall be called at each call of Det.
Post-Build Variant Support	false
Supported Config Variants	VARIANT-PRE-COMPILE

Included Containers		
Container Name	Multiplicity	Scope / Dependency
DetConfigSet	0..1	Configuration set container for Det.
DetGeneral	1	Generic configuration parameters of the Det module.
DetNotification	0..1	Configuration of the notification functions.

10.1.2 DetGeneral

SWS Item	ECUC_Det_00002 :		
Container Name	DetGeneral		
Parent Container	Det		
Description	Generic configuration parameters of the Det module.		
Configuration Parameters			

SWS Item	ECUC_Det_00006 :		
Name	DetForwardToDlt		
Parent Container	DetGeneral		
Description	Only if the parameter is present and set to true, the Det requires the Dlt interface and forwards it's call to the function Dlt_DetForwardErrorTrace. In this case the optional interface to Dlt_Det is required.		
Multiplicity	0..1		
Type	EcucBooleanParamDef		
Default value	--		
Post-Build Variant Multiplicity	false		
Post-Build Variant Value	false		
Multiplicity Configuration Class	Pre-compile time	X	All Variants
	Link time	--	
	Post-build time	--	
Value Configuration Class	Pre-compile time	X	All Variants
	Link time	--	
	Post-build time	--	
Scope / Dependency	scope: local		

SWS Item	ECUC_Det_00003 :		
Name	DetVersionInfoApi		
Parent Container	DetGeneral		
Description	Pre-processor switch to enable / disable the API to read out the modules version information. true: Version info API enabled. false: Version info API disabled.		
Multiplicity	1		
Type	EcucBooleanParamDef		
Default value	false		
Post-Build Variant Value	false		
Value Configuration Class	Pre-compile time	X	All Variants
	Link time	--	

	Post-build time	--	
Scope / Dependency	scope: local		

No Included Containers

10.1.3 DetNotification

SWS Item	ECUC_Det_00004 :		
Container Name	DetNotification		
Parent Container	Det		
Description	Configuration of the notification functions.		
Configuration Parameters			

SWS Item	ECUC_Det_00005 :		
Name	DetErrorHook		
Parent Container	DetNotification		
Description	Optional list of functions to be called by the Default Error Tracer in context of each call of Det_ReportError. The type of these functions shall be identical the type of Det_ReportError itself: Std_ReturnType (*f)(uint16, uint8, uint8, uint8).		
Multiplicity	0..*		
Type	EcucFunctionNameDef		
Default value	--		
maxLength	--		
minLength	--		
regularExpression	--		
Post-Build Variant Multiplicity	false		
Post-Build Variant Value	false		
Multiplicity Configuration Class	Pre-compile time	X	All Variants
	Link time	--	
	Post-build time	--	
Value Configuration Class	Pre-compile time	X	All Variants
	Link time	--	
	Post-build time	--	
Scope / Dependency	scope: local		

SWS Item	ECUC_Det_00010 :		
Name	DetReportRuntimeErrorCallout		
Parent Container	DetNotification		
Description	This parameter defines the existence and the names of callout functions for the corresponding runtime error handler. The type of these functions shall be identical the type of Det_ReportRuntimeError itself: Std_ReturnType (*f)(uint16, uint8, uint8, uint8)		
Multiplicity	0..*		
Type	EcucFunctionNameDef		
Default value	--		
maxLength	--		
minLength	--		
regularExpression	--		
Value Configuration Class	Pre-compile time	X	All Variants

	Link time	--	
	Post-build time	--	
Scope / Dependency	scope: local		

SWS Item	ECUC_Det_00011 :		
Name	DetReportTransientFaultCallout		
Parent Container	DetNotification		
Description	<p>This parameter defines the existence and the names of callout functions for the corresponding transient fault handler.</p> <p>The type of these functions shall be identical the type of Det_ReportTransientFault itself: Std_ReturnType (*)(uint16, uint8, uint8, uint8)</p>		
Multiplicity	0..*		
Type	EcucFunctionNameDef		
Default value	--		
maxLength	--		
minLength	--		
regularExpression	--		
Value Configuration Class	Pre-compile time	X	All Variants
	Link time	--	
	Post-build time	--	
Scope / Dependency	scope: local		

No Included Containers

10.1.4 DetConfigSet

SWS Item	ECUC_Det_00007 :		
Container Name	DetConfigSet		
Parent Container	Det		
Description	Configuration set container for Det.		
Configuration Parameters			

Included Containers			
Container Name	Multiplicity	Scope / Dependency	
DetModule	0..*	This container describes a non BSW module that is using the Det via Service Interface.	

10.1.5 DetModule

SWS Item	ECUC_Det_00008 :		
Container Name	DetModule		
Parent Container	DetConfigSet		
Description	This container describes a non BSW module that is using the Det via Service Interface.		
Configuration Parameters			

SWS Item	ECUC_Det_00009 :		
----------	-------------------------	--	--

Name	DetModuleId		
Parent Container	DetModule		
Description	Unique identifier of the error reporting component. When reporting errors to the DET, a symbolic name derived from the moduleID has to be used to identify the reporter.		
Multiplicity	1		
Type	EcucIntegerParamDef (Symbolic Name generated for this parameter)		
Range	4096 .. 65535		
Default value	--		
Post-Build Variant Value	false		
Value Configuration Class	Pre-compile time	X	All Variants
	Link time	--	
	Post-build time	--	
Scope / Dependency	scope: local		

Included Containers		
Container Name	Multiplicity	Scope / Dependency
DetModuleInstance	1..*	Describes the Instance used for the according Service Port. It shall be used to differentiate software component instances when multiple instantiation is used.

10.1.6 DetModuleInstance

SWS Item	ECUC_Det_00013 :		
Container Name	DetModuleInstance		
Parent Container	DetModule		
Description	Describes the Instance used for the according Service Port. It shall be used to differentiate software component instances when multiple instantiation is used.		
Post-Build Variant Multiplicity	true		
Multiplicity Configuration Class	Pre-compile time	X	All Variants
	Link time	--	
	Post-build time	--	
Configuration Parameters			

SWS Item	ECUC_Det_00012 :		
Name	DetInstanceId		
Parent Container	DetModuleInstance		
Description	Describes the InstanceId used for the according Service Port. It shall be used to differentiate software component instances when multiple instantiation is used. Else it shall be set to 0.		
Multiplicity	1		
Type	EcucIntegerParamDef		
Range	0 .. 255		
Default value	0		
Post-Build Variant Value	false		
Value Configuration Class	Pre-compile time	X	All Variants
	Link time	--	
	Post-build time	--	
Scope / Dependency	scope: local		

No Included Containers

10.2 Published Information

Additional module-specific published parameters are listed below if applicable.

11 Not applicable requirements

[SWS_Det_00999] [These requirements are not applicable to this specification.] (SRS_BSW_00301, SRS_BSW_00304, SRS_BSW_00305, SRS_BSW_00306, SRS_BSW_00307, SRS_BSW_00308, SRS_BSW_00309, SRS_BSW_00439, SRS_BSW_00314, SRS_BSW_00325, SRS_BSW_00328, SRS_BSW_00330, SRS_BSW_00331, SRS_BSW_00334, SRS_BSW_00335, SRS_BSW_00341, SRS_BSW_00342, SRS_BSW_00343, SRS_BSW_00347, SRS_BSW_00441, SRS_BSW_00353, SRS_BSW_00350, SRS_BSW_00359, SRS_BSW_00360, SRS_BSW_00440, SRS_BSW_00361, SRS_BSW_00371, SRS_BSW_00373, SRS_BSW_00377, SRS_BSW_00378, SRS_BSW_00379, SRS_BSW_00401, SRS_BSW_00410, SRS_BSW_00413, SRS_BSW_00415, SRS_BSW_00005, SRS_BSW_00006, SRS_BSW_00007, SRS_BSW_00009, SRS_BSW_00010, SRS_BSW_00158, SRS_BSW_00160, SRS_BSW_00161, SRS_BSW_00162, SRS_BSW_00164, SRS_BSW_00172, SRS_BSW_00344, SRS_BSW_00404, SRS_BSW_00405, SRS_BSW_00170, SRS_BSW_00380, SRS_BSW_00419, SRS_BSW_00381, SRS_BSW_00412, SRS_BSW_00383, SRS_BSW_00388, SRS_BSW_00389, SRS_BSW_00390, SRS_BSW_00393, SRS_BSW_00395, SRS_BSW_00396, SRS_BSW_00397, SRS_BSW_00398, SRS_BSW_00399, SRS_BSW_00400, SRS_BSW_00438, SRS_BSW_00375, SRS_BSW_00416, SRS_BSW_00406, SRS_BSW_00437, SRS_BSW_00168, SRS_BSW_00407, SRS_BSW_00423, SRS_BSW_00424, SRS_BSW_00425, SRS_BSW_00426, SRS_BSW_00427, SRS_BSW_00428, SRS_BSW_00429, SRS_BSW_00432, SRS_BSW_00433, SRS_BSW_00336, SRS_BSW_00369, SRS_BSW_00339, SRS_BSW_00348, SRS_BSW_00357, SRS_BSW_00422, SRS_BSW_00417, SRS_BSW_00323, SRS_BSW_00004, SRS_BSW_00409, SRS_BSW_00385, SRS_BSW_00386, SRS_BSW_00458, SRS_BSW_00466)